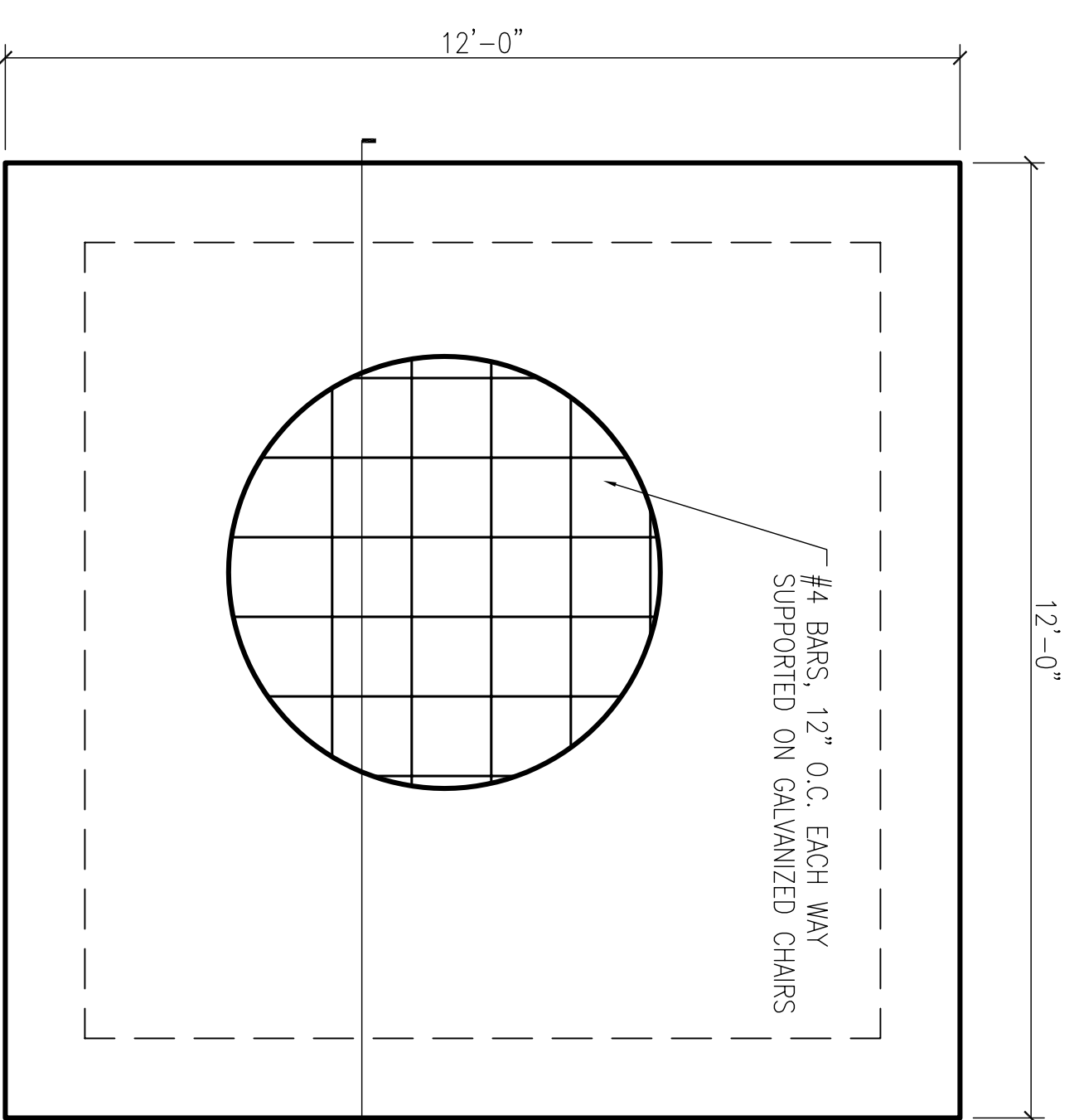


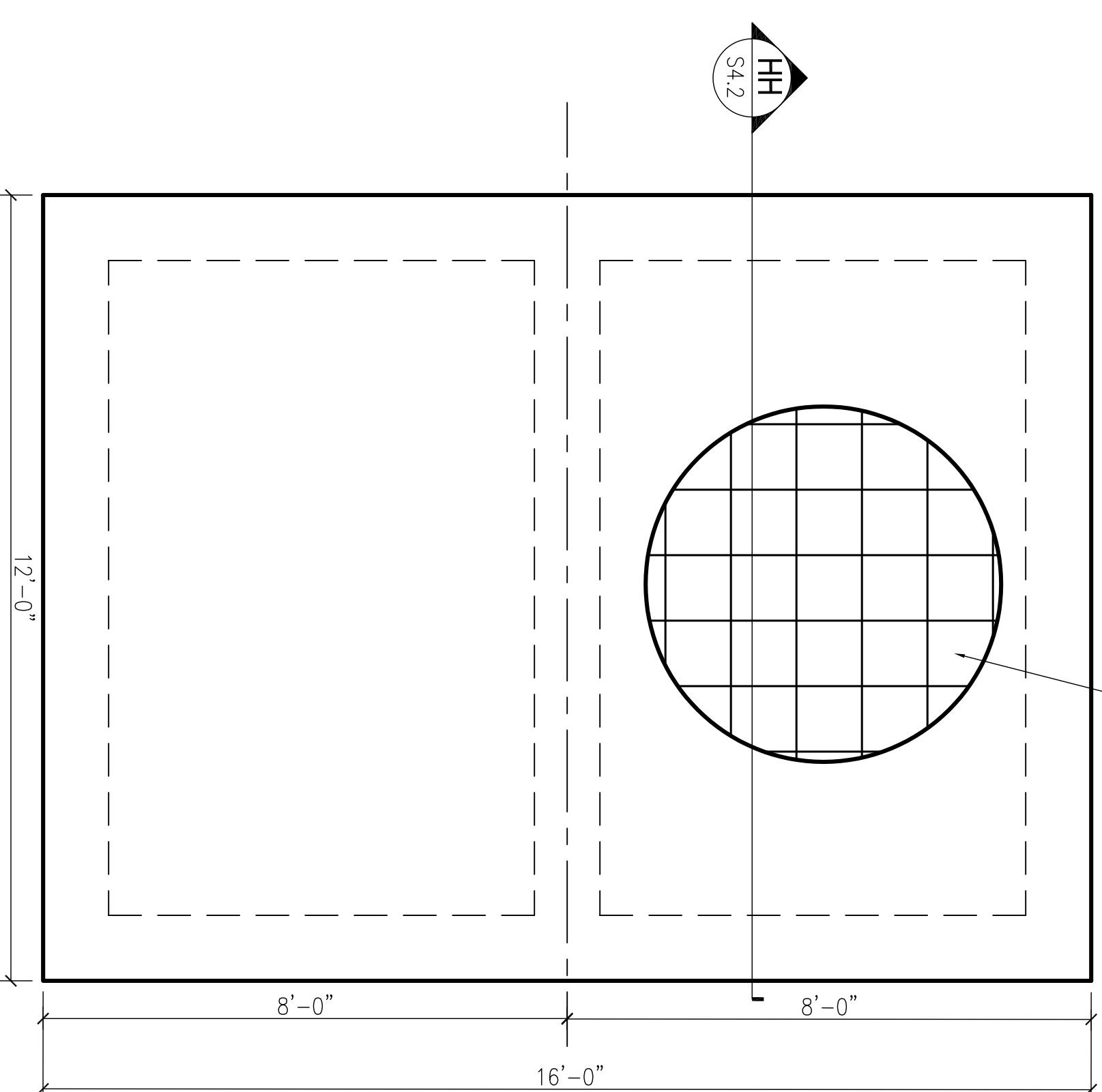
#4 BARS, 12" O.C. EACH WAY
SUPPORTED ON GALVANIZED CHAIRS

FF
SA.2



#4 BARS, 12" O.C. EACH WAY
SUPPORTED ON GALVANIZED CHAIRS

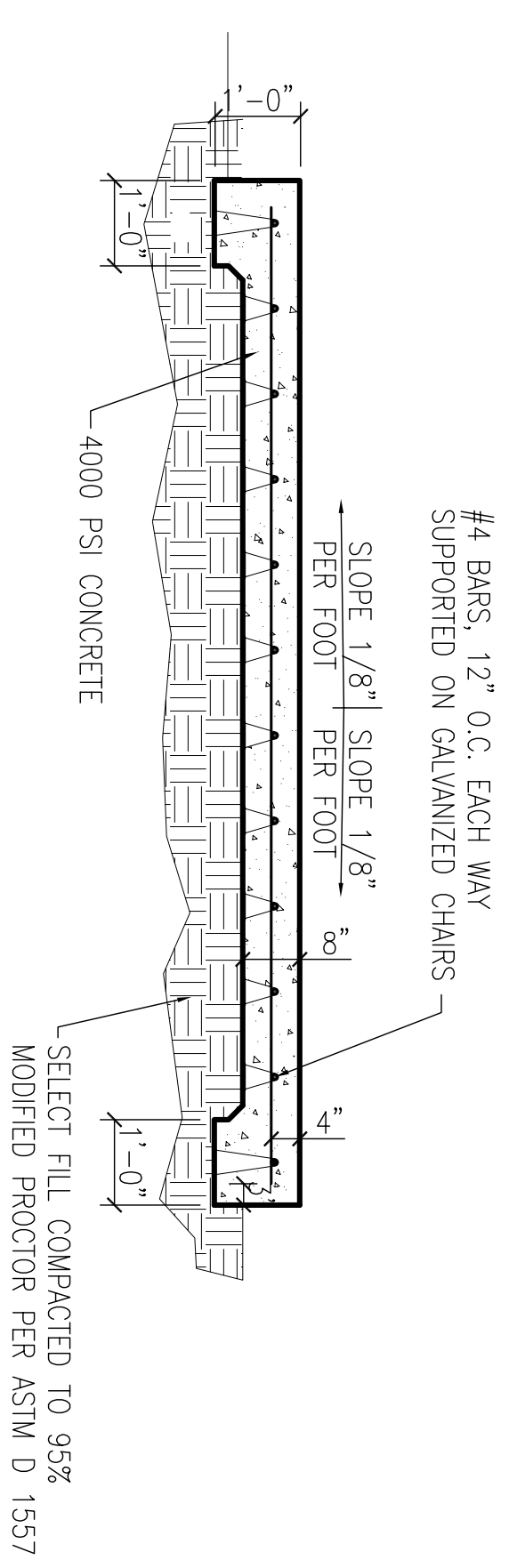
GG
SA.2



#4 BARS, 12" O.C. EACH WAY
SUPPORTED ON GALVANIZED CHAIRS

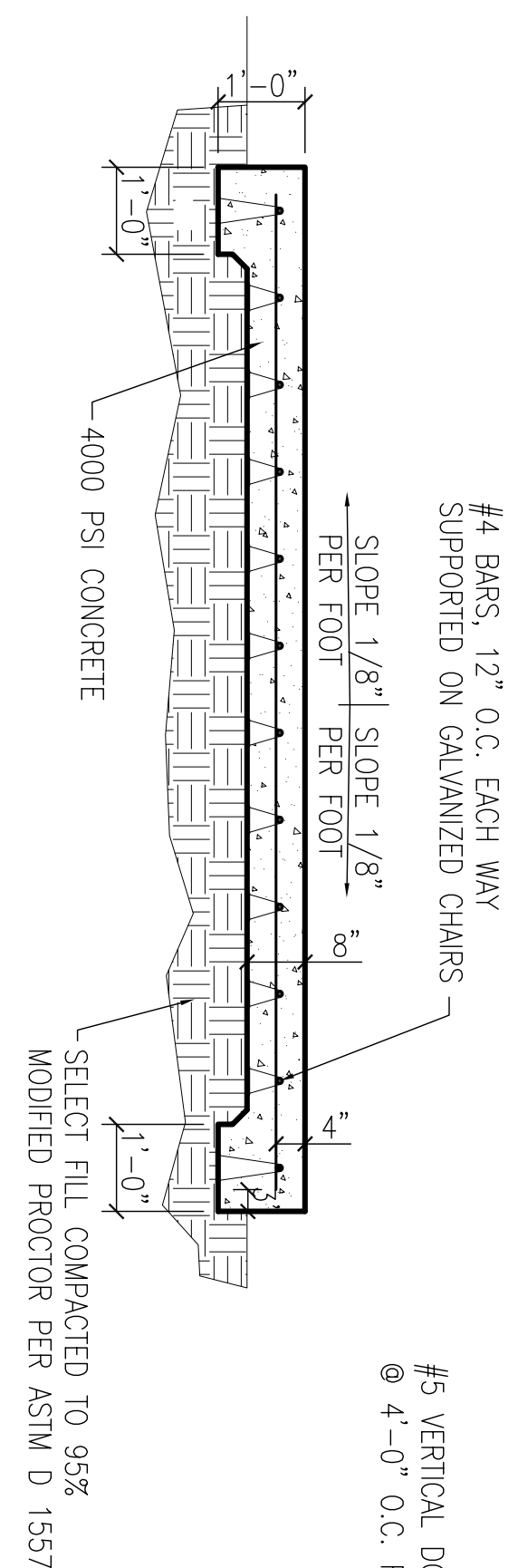
HH
SA.2

CHILLER PAD FOUNDATION 11
SCALE: 1/2" = 1'-0"



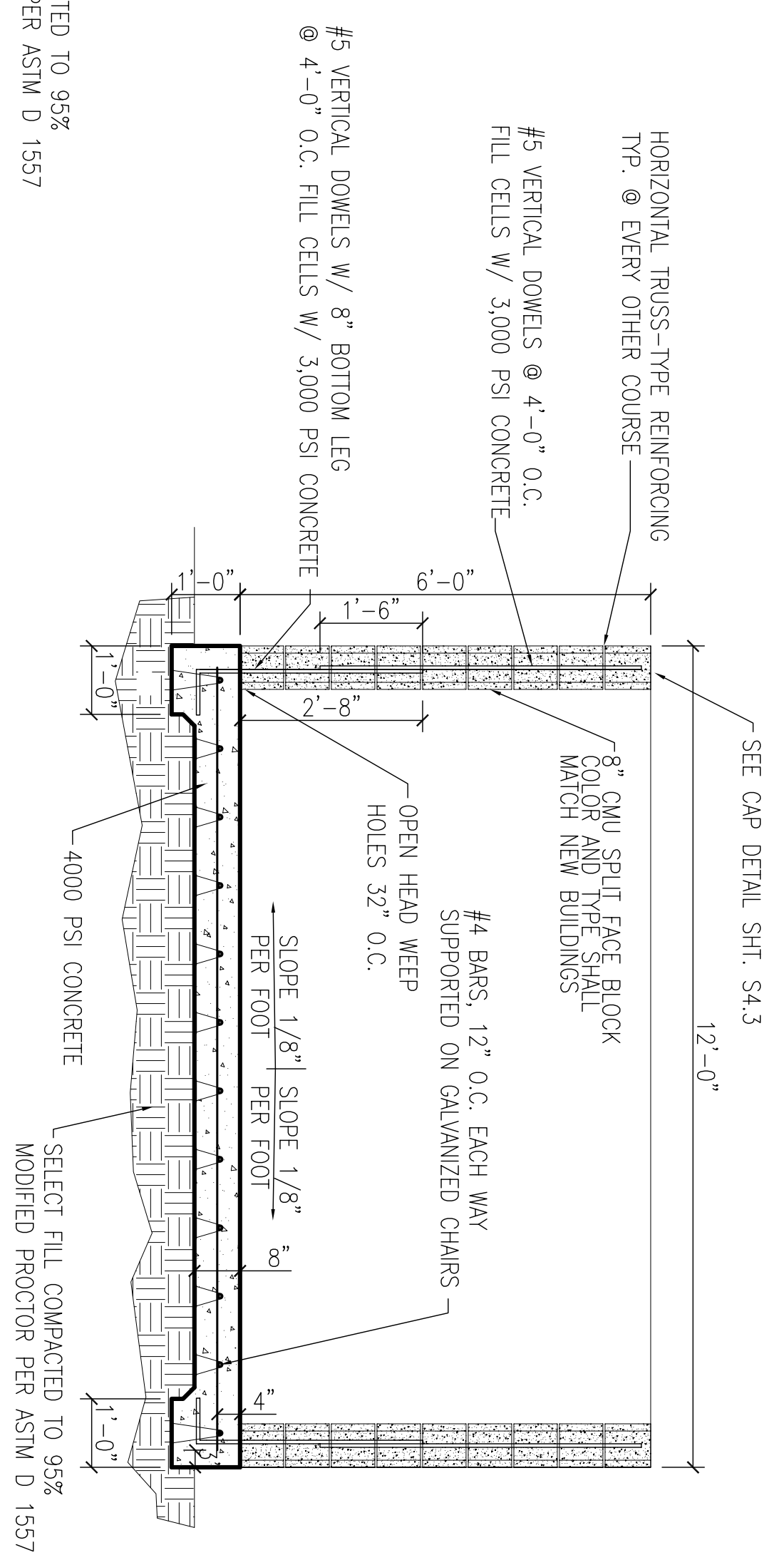
CHILLER PAD SECTION FF
SCALE: 1/2" = 1'-0"

ANTENNA PAD FOUNDATION 12
SCALE: 1/2" = 1'-0"



ANTENNA PAD SECTION GG
SCALE: 1/2" = 1'-0"

DUMPSTER PAD FOUNDATION 13
SCALE: 1/2" = 1'-0"



DUMPSTER PAD SECTION HH
SCALE: 1/2" = 1'-0"

REVDATE: _____

1 2 3 4 5

DEPARTMENT OF THE NAVY NAVAL FACILITIES ENGINEERING COMMAND SOUTHEAST IPT SOUTH ATLANTIC NAVAL AIR STATION JACKSONVILLE MISSISSIPPI		EMMETT B. DAMMON, JR. REGISTERED PROFESSIONAL ENGINEER NO. 9852 STATE OF MISSISSIPPI MEMBER NATIONAL SOCIETY OF PROFESSIONAL ENGINEERS		DAMMON ENGINEERING, INC. 1000 W. UNIVERSITY BLVD. SUITE 200 MOBILE, AL 36688 (985) 649-8832 FAX: (985) 649-8832		NAVFAC		SYM DESCRIPTION DATE APPR	
JOHN C. STENNIS SPACE CENTER SOF RIVERINE AND COMBATANT CRAFT OPERATIONS FACILITY - PRE-FINAL		DESIGNED BY: C. DAMMON CHECKED BY: R. WILBIE DRAWN BY: T. JARVIS IN CHARGE: P. DAMMON		PROJECT NO.: 62467-05-0-0096 DRAWING NO.: 1117 SHEET NO.: S4.2		TITLE: STRUCTURAL DETAILS			