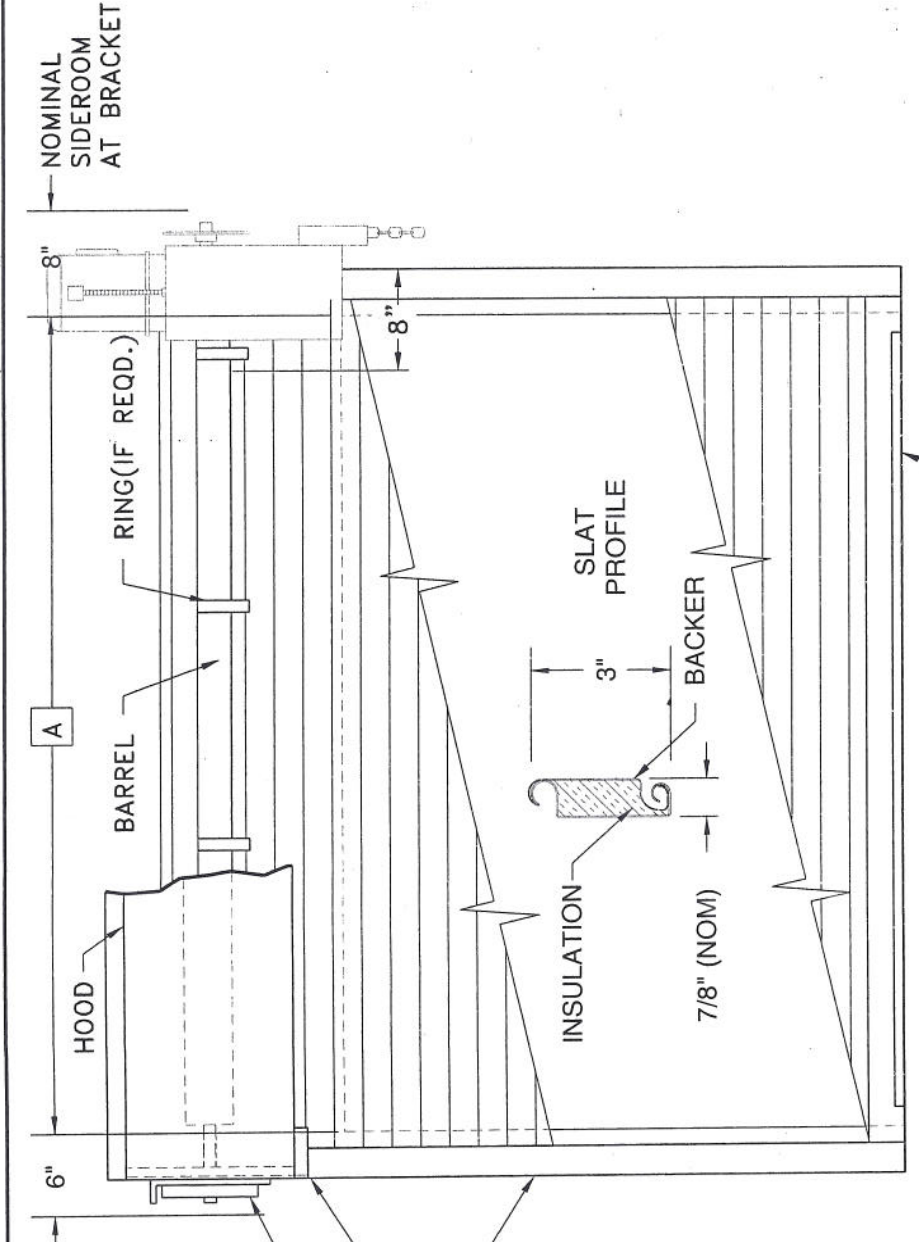
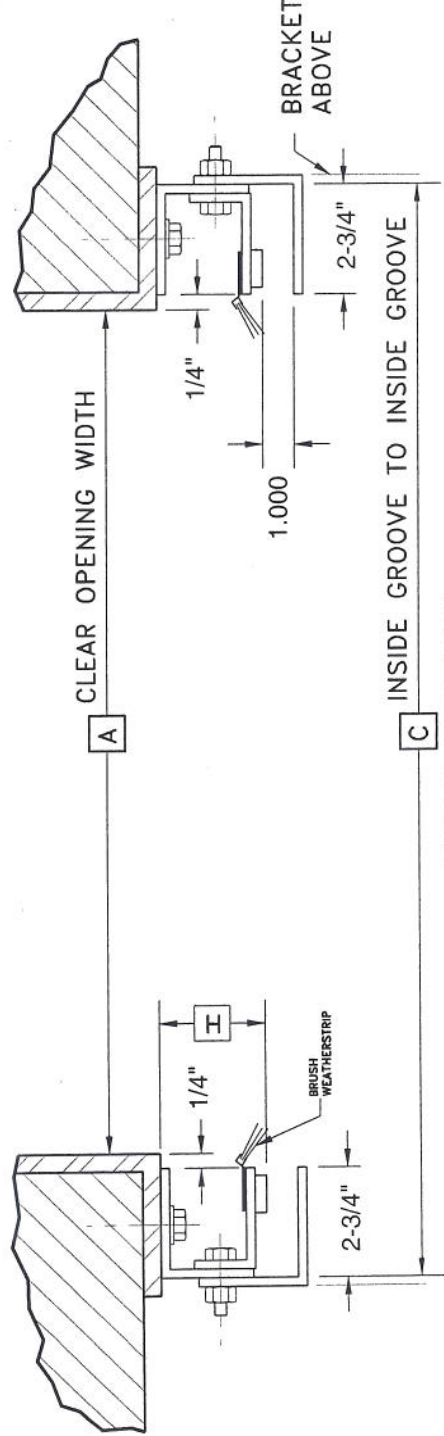


ITEM NO.	AW REV'S OPEN
01	1-1/2



COILSIDE ELEVATION
RIGHT HAND OPERATED DOOR SHOWN
LEFT HAND OPERATED DOOR OPPOSITE

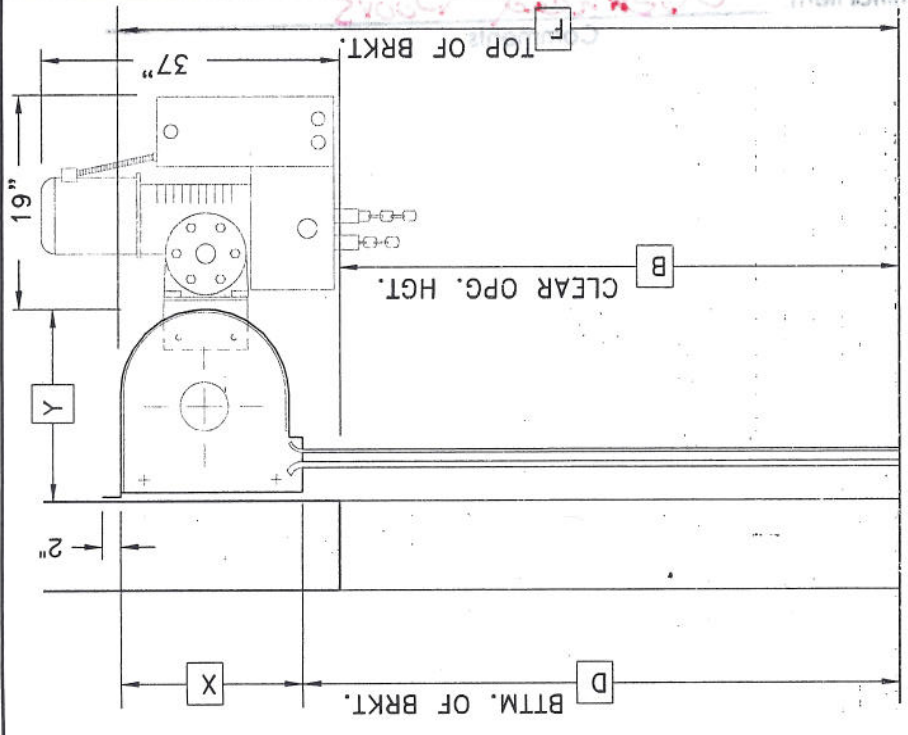


GUIDE SECTION
AS SHOWN

NOTE: WIDTH C IS IMPORTANT AND MUST BE HELD

DOOR QTY.	ITEM NO.	HAND OF OPER.	WIDTHS			HEIGHTS			GUIDE	FOR BRACKET			SLAT LENGTH
			A	C	E	B	D	F		H	X	Y	
2	01	RH	120"	12'6"		16'0"	16'2"	18'0"	3-3/8"	22"	20-3/4"		12'2-3/4"

CUSTOMER OPENING IDENTIFICATION



VERTICAL SECTION

GENERAL NOTES

DESIGNED TO WITHSTAND 37#SqFt WINDLOAD.
CURTAIN IS 22GA STEEL INSULATED. **43.3 #min.**
WINDLOCKS ON EACH END OF EVERY OTHER SLAT.
BOTTOM BAR IS GALVANIZED STEEL.
DOUBLE ANGLE WITH ASTRAGAL STANDARD.
GUIDES ARE STRUCTURAL THREE ANGLE.
HOODS ARE 24GA GALVANIZED STEEL.
SHOP COAT OF RUST INHIBITIVE PRIMER ON NONGALVANIZED STEEL SURFACES.
ALL GALVANIZING PER ASTM A 653 STANDARDS.
MOTOR OPERATOR IS GEAR REDUCTION TYPE EQUIPPED WITH EMERGENCY RELEASE CHAIN, FURNISHED WITH DOOR SPROCKET, ROLLER CHAIN, MOUNTING SUPPORT, PADLOCKABLE HAND CHAIN KEEPER, AND ONE PUSH BUTTON STATION (SAME NEMA RATING AS OPERATOR).
CIRCUIT: 1/2 HP 460 VAC 3 PH 60 HZ NEMA 1

NOTES

CURTAIN FINISH: GALV STEEL PAINTED GRAY
BACKER FINISH: GALV STEEL PAINTED GRAY
BOTTOM BAR FINISH: GALVANIZED STEEL
GUIDE FINISH: STEEL SHOP PRIMED BLACK
HOOD FINISH: GALV STEEL PAINTED GRAY

OPTIONS ON THIS/ THESE DOORS:
NEOPRENE BAFFEL INSIDE HOOD

- Door to be hot dip galv. with Painted Finish
- Switch to be 3 button

Wayne Dalton

Rolling Door Division
Kinnear **North American**

THERMOTITE DOOR MODEL : 823C

PROJECT : STENNIS MAINT. BLDG
3-16-09 REVISED

ARCH :

G.C. :

DISTR : PARTITIONS OF GULFPORT CORP.

DISTR P.O. NO. :
PREPARED BY : BGRAHAM
DATE : 03/11/2009

REVISION QUOTE NO. DWG. NO.

1 766778 OF

BROADMOOR, L.L.C.

I hereby agree that the (equipment) (material) (article) shown and marked in this submittal is that proposed to be incorporated with contract number N69450-05-D-0096, is in compliance with the contract documents, can be installed in the allocated spaces, and is submitted for Government approval.

Robert L. White 4.29.09

DQC Manager

Date

Joseph M. Calkins 4/28/09

QC Officer

Date

DAMMON ENGINEERING INC

Date: 4.28.09 Project: Sternis ROF
Reviewed: _____
Reviewed as Noted: X
Revise and Resubmit: _____
Rejected: _____
Other: _____

Corrections or comments made on the shop drawings during this review do not relieve the contractor from compliance with requirements of the drawings and specifications. This check is only for review of the general conformance with the design concept of the project and general compliance with the information given in the contract documents. This contractor is responsible for confirming and correlating all quantities and dimensions, selecting fabrication processes and techniques of construction, coordinating his or her work with that of all other trades and performing all in a safe and satisfactory manner.

Submittal Item: Overhead Doors
Comments