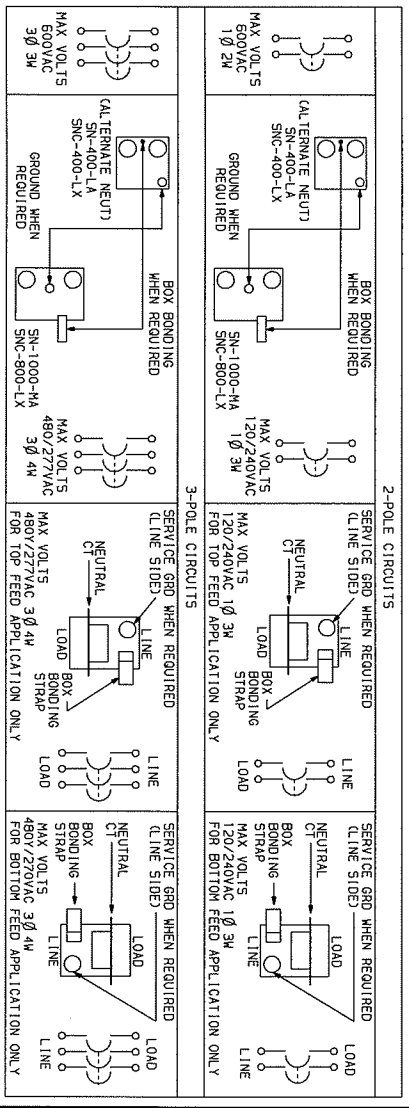


NOTES:  
 FINISH - GRAY BAKED ENAMEL ELECTRODEPOSITED OVER CLEANED PHOSPHATIZED STEEL.  
 NEUTRAL - INSULATED GROUNDABLE. UL LISTED - FILE E-138861.  
 SUITABLE FOR USE AS SERVICE EQUIPMENT WHEN NEUTRAL ASSEMBLY IS INSTALLED.  
 NEUTRAL ASSEMBLY IS SUITABLE FOR USE WITH NEUTRAL CURRENT TRANSFORMERS.  
 CATALOG NUMBER LE5C12 LEA22 AND LE5C12.  
 LCL, LXL, LXL AND LXIL CIRCUIT BREAKERS ARE 60% RATED WHEN INSTALLED IN THIS ENCLOSURE.  
 LEL, LXL, LXL AND LXIL CIRCUIT BREAKERS ARE 100% RATED WHEN INSTALLED IN THIS ENCLOSURE.  
 LEL, LXL, LXL AND LXIL CIRCUIT BREAKERS ARE 80% RATED WHEN INSTALLED IN THIS ENCLOSURE.  
 THE SHORT CIRCUIT CURRENT RATING OF THIS ENCLOSED CIRCUIT BREAKER IS EQUAL TO THE INTERRUPTING RATING INDICATED ON THE CHART ABOVE, MAY BE LESS THAN THE AIR RATING INDICATED ON THE INSTALLED CIRCUIT BREAKER.



**LX-500-AMK**

DUAL DIMENSIONS, INCHES  
 MILLIMETERS

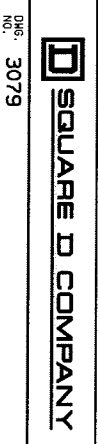
CIRCUIT BREAKER CATALOG NO. PREFIX	AMPERE RATING	CONDUCTORS PER PHASE	WIRE SIZE (AWG/KCHL)	MAX. MIN.	TYPE
LCL, LXL	300-600A	2	500	4/0	AL
LEL, LXL, LXIL	100-250A	2	350	1	OR
LEL, LXL, LXIL	300-600A	2	500	4/0	CU

FIELD INSTALLABLE SOLID NEUTRAL ASSEMBLIES AND GROUND BAR KIT *	CATALOG NUMBER	AMPERE RATING	NUMBER OF TERMINALS	CONDUCTORS PER TERMINAL	WIRE SIZE (AWG/KCHL)		TYPE
					MAX.	MIN.	
▲	SN-400-LA	100-400A	2	1 OR 2	600	1	AL OR CU
▲	SN-400-LX	100-400A	2	1	250	2	CU
▲	SN-800-LX	200-800A	4	1	500	2	CU
▲	SN-1000-HA	200-1000A	2	3	500	3/0	AL OR CU
*	PK051A4	-	4	1	250	6	AL OR CU

**FIELD INSTALLED CIRCUIT BREAKER DATA**

CIRCUIT BREAKER CATALOG NO. PREFIX	NUMBER OF POLES	AMPERE RATING	UL LISTED INTERRUPTING RATING RMS SYMMETRICAL AMPERES			FEDERAL SPEC. S-FEES/ H-CEN/ GEN
			240	480V/277	480	
LCL	3	300-600	100K	65K	65K	23A
LEL	3	300-800	100K	65K	65K	23A
LXL	3	100-600	100K	65K	65K	23A
LXL	3	100-600	100K	65K	65K	23A
LXL	3	300-600	200K	200K	200K	23A
LXL	3	300-600	200K	200K	200K	23A
LXL	3	100-600	200K	200K	200K	23A

CIRCUIT BREAKER ENCLOSURES  
 100-600 AMPERE  
 ENCLOSE - NEMA TYPE 1, 3, 3R, 5 OR 12



QUC. NO. 3079