

FIRST FLOOR PLAN

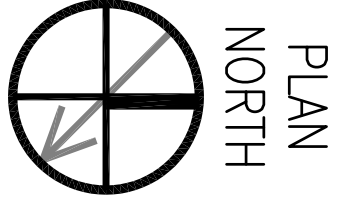
SCALE 1/8" = 1'-0"

OPERATIONS BUILDING 2440

4" ELEVATED SLAB
RE: CID-3 FOR DIMENSIONS

NOTE: RE SID-2 FOR FINISH SCHEDULE & MATERIALS LEGEND

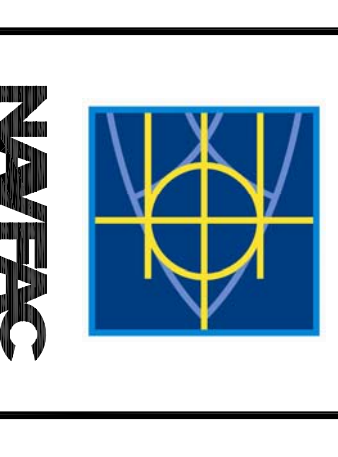
SID-1



DEPARTMENT OF THE NAVY NAVAL FACILITIES ENGINEERING COMMAND NAVAL FACILITIES ENGINEERING COMMAND SOUTHEAST IPT SOUTH ATLANTIC NAVAL AIR STATION JACKSONVILLE MISSISSIPPI	DEPARTMENT OF THE NAVY NAVAL FACILITIES ENGINEERING COMMAND NAVAL FACILITIES ENGINEERING COMMAND SOUTHEAST IPT SOUTH ATLANTIC NAVAL AIR STATION JACKSONVILLE MISSISSIPPI
PROJECT NAME: JOHN C. STENNIS SPACE CENTER SOF RIVERINE AND COMBATANT CRAFT OPERATIONS FACILITY	PROJECT NO: 15026713
DATE: AUG. 11, 2009	SCALE: 1/8" = 1'-0"
DESIGNER: BROADMOOR, L.L.C.	CHECKER: [Signature]
DRAWN BY: [Signature]	DATE: AUG. 11, 2009
PROJECT NO: 15026713	PROJECT NO: 15026713
CONTRACT NO: N02467-05-D-0096	CONTRACT NO: N02467-05-D-0096
NAVFAC DRAWING NO: 15026713	NAVFAC DRAWING NO: 15026713
SHEET 66 OF 132	SHEET 66 OF 132

BROADMOOR DESIGN

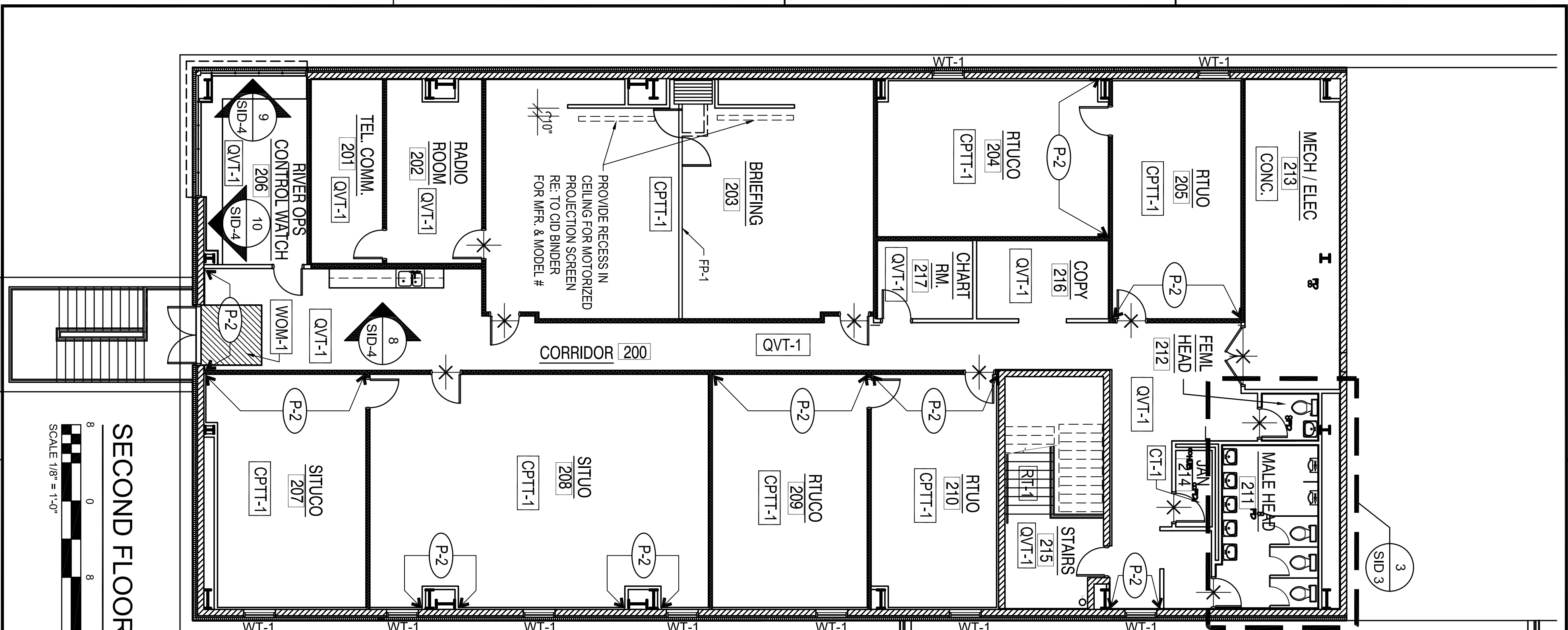
BROADMOOR, L.L.C.
2740 NORTH ARNOULT ROAD, METAIRIE, LA 70002 (504) 885-5401
www.broadmoorllc.com



SYM	DESCRIPTION	DATE	APPR

SID FINAL
SUBMITTAL ISSUE





SECOND FLOOR PLAN
SCALE 1/8" = 1'-0"

FINISH SCHEDULE

ROOM NUMBER	ROOM NAME	FLOOR	BASE	WALLS	CLG.	CLG. HT.	REMARKS
FIRST FLOOR							
102	ENTRY	QVT-1	RB-1	EP / P-1 & P-2	GWB / P-4	9'-0"	RE: SID-1.0 FOR ACCENT PAINT COLORS.
103	LOBBY	QVT-1	RB-1	EP / P-1 & P-2	GWB / P-4	10'-0"	RE: SID-1.0 FOR ACCENT PAINT COLORS.
105	CAGES	CONC	RB-1	EP / P-5	PS / P-5	12'-6"	
106	CSS	CONC	RB-1	P-1	ACT-1	9'-0"	
107	ARMORY	CONC	RB-1	EP / P-5	PS / P-5	11'-0"	
108	SHOWER	CT-1	CTGB-1	CT-2/CT-3/CT-4	GWB / P-3	9'-0"	RE: ELEVATIONS & PLAN DTL. FOR TILE PATTERN
109	HEAD	PT-1	CTGB-1	CT-2/CT-3/CT-4	GWB / P-3	9'-0"	RE: ELEVATIONS & PLAN DTL. FOR TILE PATTERN
110	JANITOR	CONC	CTGB-1	EP / P-5	PS / P-5	12'-6"	
111	MALE HEAD	PT-1	CTGB-1	CT-2/CT-3/CT-4	GWB / P-3	9'-0"	RE: ELEVATIONS & PLAN DTL. FOR TILE PATTERN
112	MALE SHOWER	CT-1	CTGB-1	CT-2/CT-3/CT-4	GWB / P-3	9'-0"	RE: ELEVATIONS & PLAN DTL. FOR TILE PATTERN
113	MAIN ELECTRICAL ROOM	CONC	RB-1	P-5	PS / P-5	12'-6"	
114	MECHANICAL ROOM	CONC	RB-1	P-5	PS / P-5	12'-6"	
115	INTERIOR STAIRS	QVT-1 / RT-1	RB-1	EP / P-1	PS / P-5	12'-6"	QVT-1 @ LANDING
116	VESTIBULE	QVT-1	RB-1	EP / P-1	PS / P-5	10'-0"	
SECOND FLOOR							
200	CORRIDOR	QVT-1	RB-1	P-1	ACT-1	9'-6"	RE: PLAN FOR ACCENT PAINT COLOR.
201	TELCOMM ROOM	QVT-1	RB-1	P-1	GWB / P-5	10'-6"	
202	RADIO ROOM	CPTT-1	RB-1	P-1	GWB / P-5	10'-6"	
203	MISSION BRIEFING ROOM(S)	CPTT-1	RB-1	P-1	ACT-1	9'-6"	RE: PLAN FOR PP-1
204	RIVERINE TASK UNIT COMMANDER OFFICE	CPTT-1	RB-1	P-1	ACT-1	9'-6"	
205	RIVERINE TASK UNIT OFFICE	CPTT-1	RB-1	P-1 / P-2	ACT-1	9'-6"	RE: PLAN FOR ACCENT PAINT COLOR. COUNTERTOPS TO BE FINISHED IN FL-1
206	RIVER OPS CONTROL WATCH STATION	CPTT-1	RB-1	P-1	ACT-1	9'-6"	RE: PLAN FOR ACCENT PAINT COLOR.
207	SQUAD. INTEROPERABILITY TASK UNIT COMMANDER OFFICE	CPTT-1	RB-1	P-1 / P-2	ACT-1	9'-6"	RE: PLAN FOR ACCENT PAINT COLOR.
208	SQUAD. INTEROPERABILITY TASK UNIT OFFICE	CPTT-1	RB-1	P-1 / P-2	ACT-1	9'-6"	RE: PLAN FOR ACCENT PAINT COLOR.
209	RIVERINE TASK UNIT COMMANDER OFFICE	CPTT-1	RB-1	P-1 / P-2	ACT-1	9'-6"	RE: PLAN FOR ACCENT PAINT COLOR.
210	RIVERINE TASK UNIT OFFICE	CPTT-1	RB-1	P-1 / P-2	ACT-1	9'-6"	RE: PLAN FOR ACCENT PAINT COLOR.
211	MALE HEAD	PT-1 / CT-1	CTCB-1	CT-2/CT-3/CT-4	GWB / P-3	9'-6"	RE: ELEVATIONS & PLAN DTL. FOR TILE PATTERN
212	FEMALE HEAD	PT-1 / CT-1	CTCB-1	CT-2/CT-3/CT-4	GWB / P-3	9'-6"	RE: ELEVATIONS & PLAN DTL. FOR TILE PATTERN
213	MECHANICAL/ELECTRICAL ROOM	CONC	RB-1	P-5	PS / P-5	VARIES	
214	JANITOR	CT-1	CTCB-1	EP / P-5	GWB / P-5	9'-6"	
215	STAIRS	QVT-1 / RT-1	RB-1	P-1	PS / P-5	9'-6"	
216	COPY AREA	QVT-1	RB-1	P-1	ACT-1	9'-6"	
217	CHART ROOM	QVT-1	RB-1	P-1	ACT-1	9'-6"	
BOAT MAINTENANCE / STAGING BUILDING							
BOAT SPACES			RB-1	P-5	PS / P-5		
MAINTENANCE SPACE			RB-1	P-5	PS / P-5		

MATERIALS LEGEND

TAG	DESCRIPTION	TAG	DESCRIPTION
ACT-1	ACOUSTICAL CEILING TILE MANUFACTURER: USG NAME / NO.: RADPAR CLIMAPLUS COLOR: WHITE SIZE: 24" X 24"	PT-1	PORCELAIN TILE MANUFACTURER: AMERICAN OLEAN NAME: AMBER VALLEY COLOR / NO.: AM88 BOWLING GREEN SIZE: 13" X 13"
CPTT-1	CARPET TILE MANUFACTURER: SHAW CONTRACT STYLE / PATTERN: 59525 PRAIRIE COLOR: 23310 LILLY POND OZ WEIGHT: 28 DENSITY: 6.904 oz/yd SIZE: 24" X 24"	CT-1	GROUT: CUSTOM BLDG. PRODUCTS, #185 NEW TAUPE CERAMIC TILE MANUFACTURER: AMERICAN OLEAN NAME: MOSAIC SERIES COLOR / NO.: MATTE NUTMEG 0039 SIZE: 2" X 2"
CONC	SEALED CONCRETE	CT-2	GROUT: CUSTOM BLDG. PRODUCTS, #185 NEW TAUPE CERAMIC TILE MANUFACTURER: AMERICAN OLEAN NAME: BRIGHT & MATTE COLOR / NO.: ALMOND 0087 SIZE: 4-1/4" X 4-1/4"
EP	EPOXY PAINT	CT-3	CERAMIC TILE MANUFACTURER: AMERICAN OLEAN NAME: BRIGHT & MATTE COLOR / NO.: MATTE DILL PICKLE 0066 SIZE: 4-1/4" X 4-1/4"
FP-1	FOLDING PARTITION MANUFACTURER: HUPCOR VINYL NAME/NO.: HIGHLAND, 201 OFF-WHITE TRIM COLOR: LAMBS WOOL	CT-4	CERAMIC TILE MANUFACTURER: AMERICAN OLEAN NAME: BRIGHT & MATTE COLOR/NO.: MATTE NUTMEG 0039 SIZE: 4-1/4" X 4-1/4"
GWB	GYPSUM WALL BOARD PAINTED STRUCTURE	SD-1	SOAP DISH, CERAMIC MANUFACTURER: AMERICAN OLEAN COLOR: ALMOND
P-1	PAINT MANUFACTURER: BENJAMIN MOORE NAME / NO.: SAG HARBOR GRAY HC-95 FINISH: EGGSHELL	SS-1	SOLID SURFACE MANUFACTURER: CORIAN NAME/NO.: CANVAS
P-2	PAINT MANUFACTURER: BENJAMIN MOORE NAME / NO.: HAMPSHIRE GRAY HC-101 FINISH: EGGSHELL	TP-1	TOILET PARTITION MANUFACTURER: PSISC COLOR: PL-180 CREAM
P-3	PAINT MANUFACTURER: BENJAMIN MOORE NAME / NO.: BLEEKER BEIGE HC-80 FINISH: FLAT	WD-1	WOOD TO MATCH LAMINATE BY WILSONART. SHAKER CHERRY #79384
P-4	PAINT MANUFACTURER: BENJAMIN MOORE NAME / NO.: CLAY BEIGE OC-11 FINISH: FLAT	WT-1	WALK OFF MATT (RECESSED) MANUFACTURER: REESE ENTERPRISES STYLE: PERFECT GRATE DIAMOND PEAK VINYL: BLACK CARPET INSERT: JAVA SIZES VARY (PER BASE CONTRACT)
P-5	PAINT MANUFACTURER: BENJAMIN MOORE NAME / NO.: CLAY BEIGE OC-11 FINISH: FLAT		
P-6	PAINT MANUFACTURER: BENJAMIN MOORE NAME/NO.: KINGSPOST GRAY HC-86 FINISH: SEMI-GLOSS		
P-7	PAINT MANUFACTURER: BENJAMIN MOORE NAME/NO.: LODEN ZEPHYR #844 FINISH: SEMI-GLOSS		
PL-1	PLASTIC LAMINATE MANUFACTURER: WILSONART NAME/NO.: LODEN ZEPHYR #844		
QVT-1	QUARTZ VINYL TILE MANUFACTURER: KINGHT STYLE: QUARTZ CONCEPTS COLOR: 740-07 ASPEN GREEN SIZE: 12" X 12"		
RB-1	RUBBER BASE MANUFACTURER: ARMSTRONG COLOR / NO.: 64 FRESH TAUPE SIZE: 4"		
RT-1	RUBBER TREADS MANUFACTURER: ARMSTRONG PROFILE: RAISED SQUARE COLOR / NO.: 64 FRESH TAUPE		

NOTES:

1. ALL INTERIOR DOOR FRAMES TO BE PAINTED P-7.
2. ALL INTERIOR DOORS AND INTERIOR SIDE OF EXTERIOR DOORS TO BE PAINTED P-6.
3. CONTRACTOR TO SUBMIT ALL PAINT SAMPLES FOR DESIGNERS APPROVAL IF DEVIATING FROM MANUFACTURER AS LISTED IN MATERIALS LEGEND.

LEGEND:

- ✱ TRANSITION OF FLOOR MATERIALS

SID FINAL
SUBMITTAL ISSUE

DEPARTMENT OF THE NAVY
NAVAL FACILITIES ENGINEERING COMMAND
NAVAL FACILITIES ENGINEERING COMMAND SOUTHEAST
1PT SOUTH ATLANTIC
NAVAL AIR STATION JACKSONVILLE
MISSISSIPPI
JOHN C. STENNIS SPACE CENTER

SOF RIVERINE AND COMBATANT CRAFT OPERATIONS FACILITY

2ND FLR SID PLAN / FINISH SCHEDULE / MATERIALS LIST

NAVAFAC DESIGN
BROADMOOR, L.L.C.
2740 NORTH ARNOULT ROAD METAIRIE, LA 70002 (504) 885-5401
www.broadmoorllc.com

NAFAC

SCALE: 1/8" = 1'-0"

DATE: AUG. 11, 2009

SHEET 67 OF 132

15026714

62467-05-D-0096

CONTRACT NO. 15026714

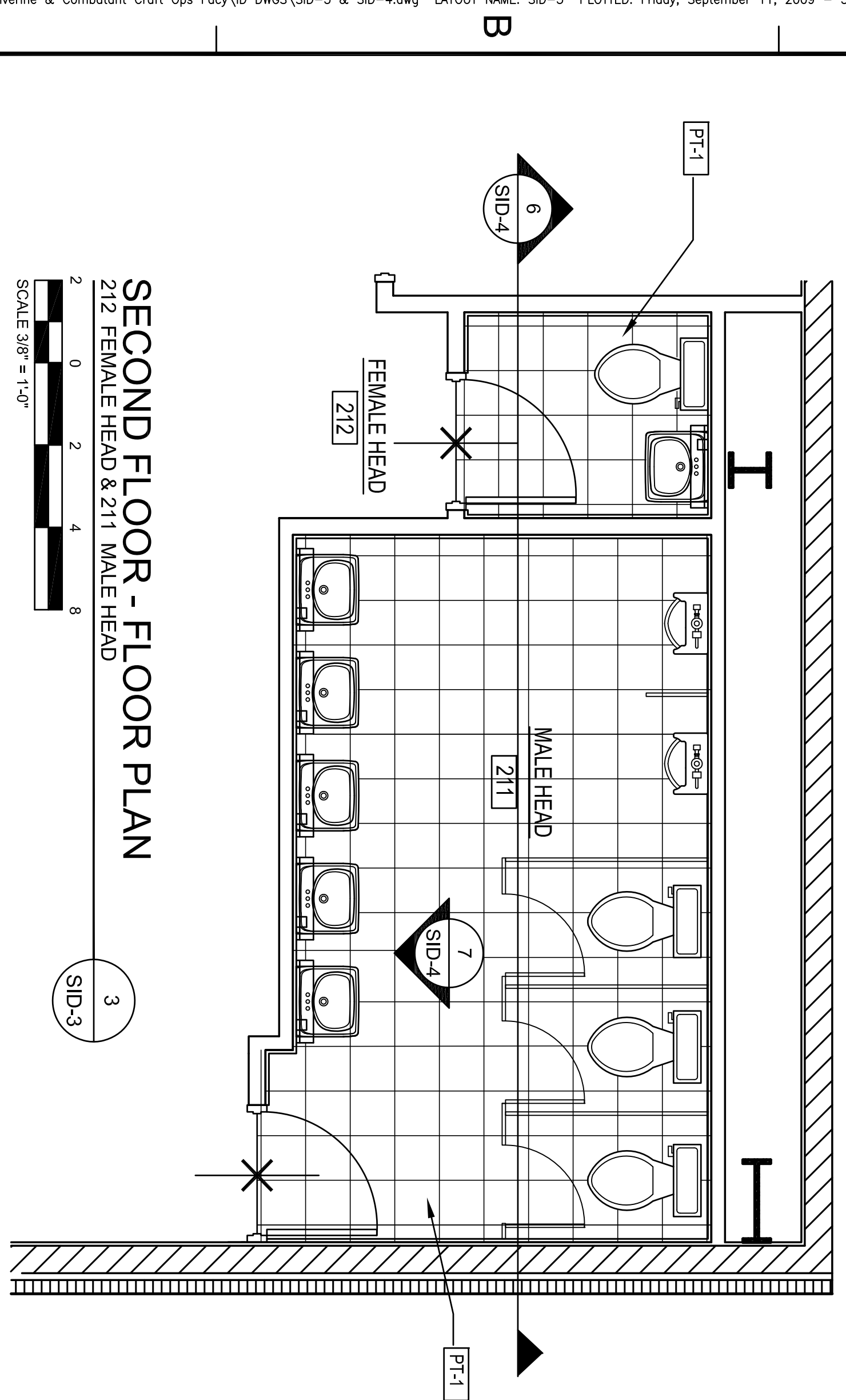
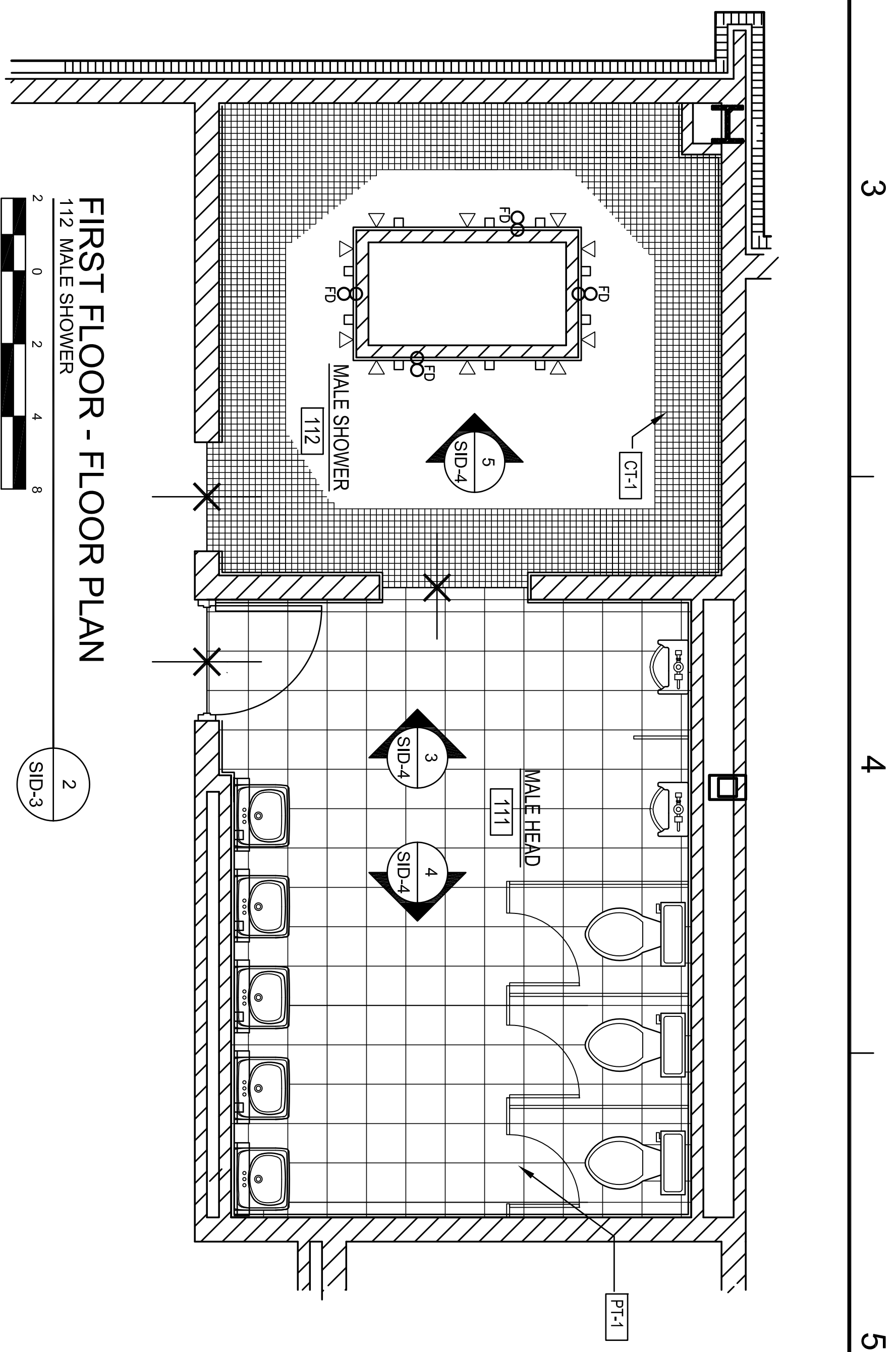
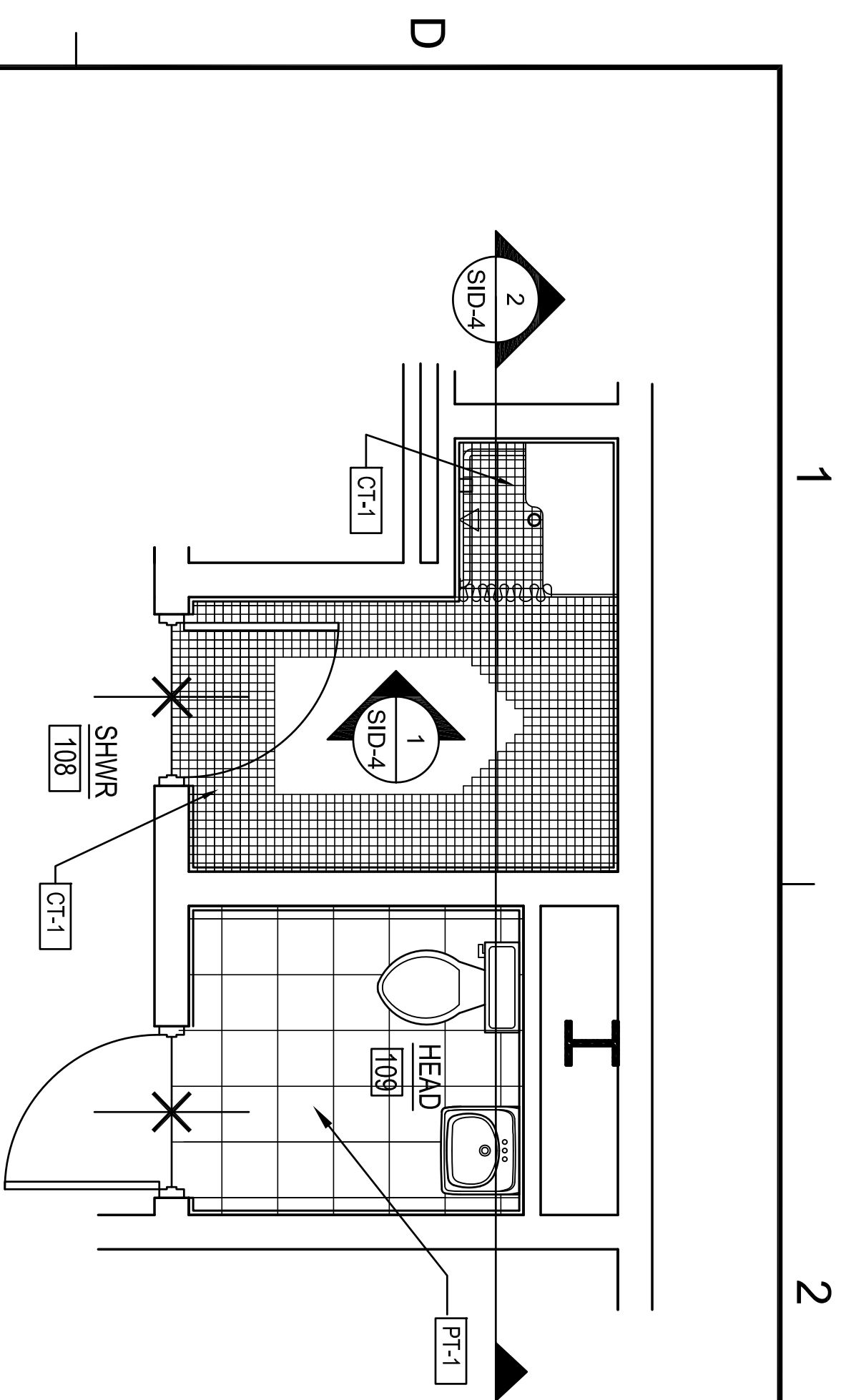
WORK ORDER NO. S10Z47

MANUAL NO. P-210

AMMO NO. #####

SIZE: 0

SYN	DESCRIPTION	DATE	APPR



A B C D

1 2 3 4 5

SID FINAL
SUBMITTAL ISSUE



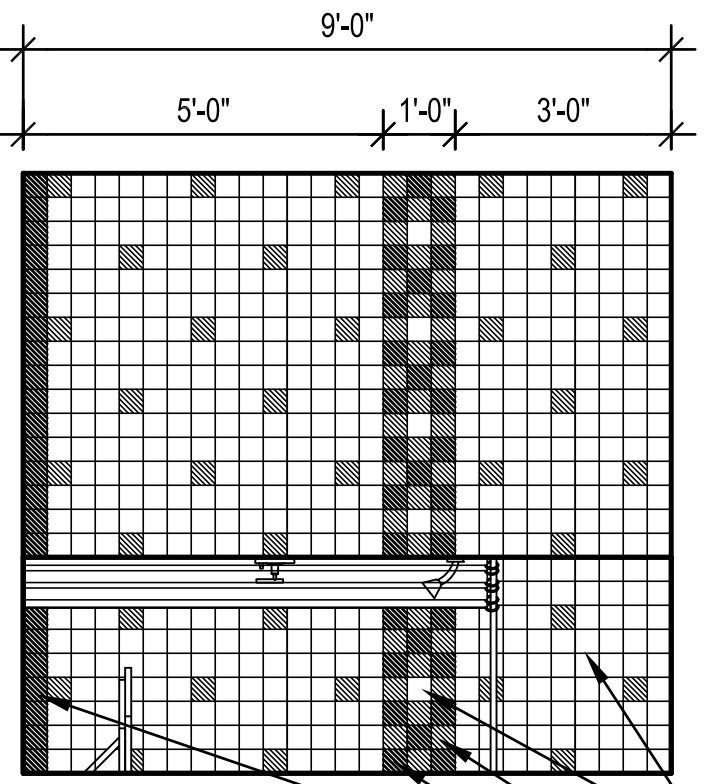
DEPARTMENT OF THE NAVY NAVAL FACILITIES ENGINEERING COMMAND SOUTHEAST NAVAL AIR STATION JACKSONVILLE MISSISSIPPI	NAVAL FACILITIES ENGINEERING COMMAND NAVAL FACILITIES ENGINEERING COMMAND SOUTHEAST NAVAL AIR STATION JACKSONVILLE MISSISSIPPI
JOHN C. STENNIS SPACE CENTER	RESTROOM FLR FINISH PLAN DTLs
AUG. 11, 2009	SID-3

BROADMOOR DESIGN

BROADMOOR, L.L.C.
2740 NORTH ARNOULT ROAD, METAIRIE, LA 70002 (504) 885-5401
www.broadmoorllc.com

NAVFAC			
SYM	DESCRIPTION	DATE	APPR

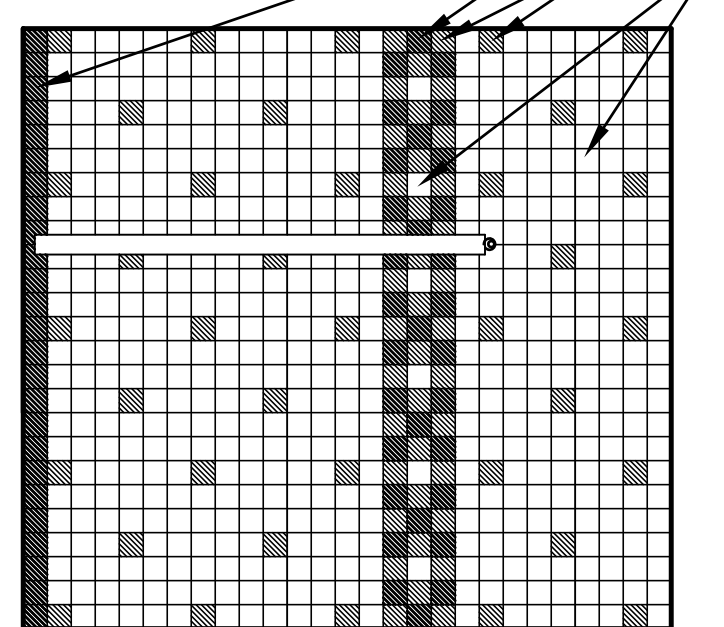
A B C D



INTERIOR ELEVATION
@ 108 SHOWER

SCALE 3/8" = 1'-0"

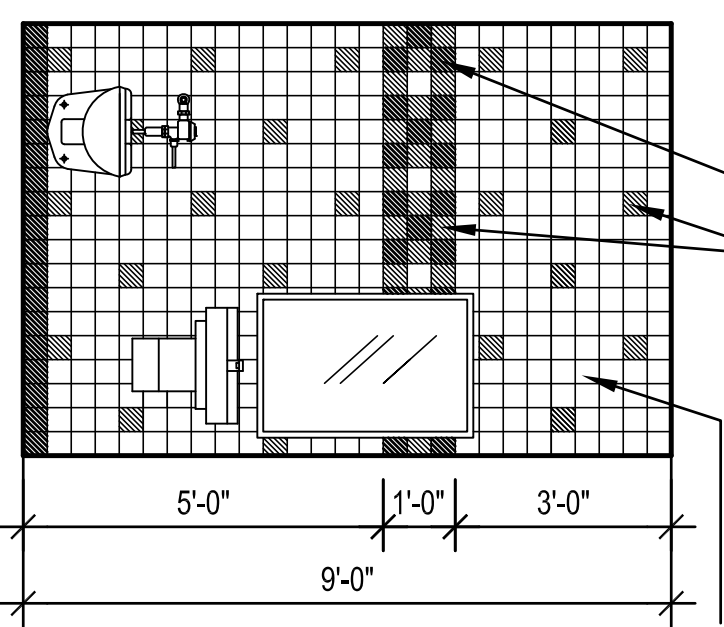
1
SID-4



INTERIOR ELEVATION
@ 108 SHOWER & 109 HEAD

SCALE 3/8" = 1'-0"

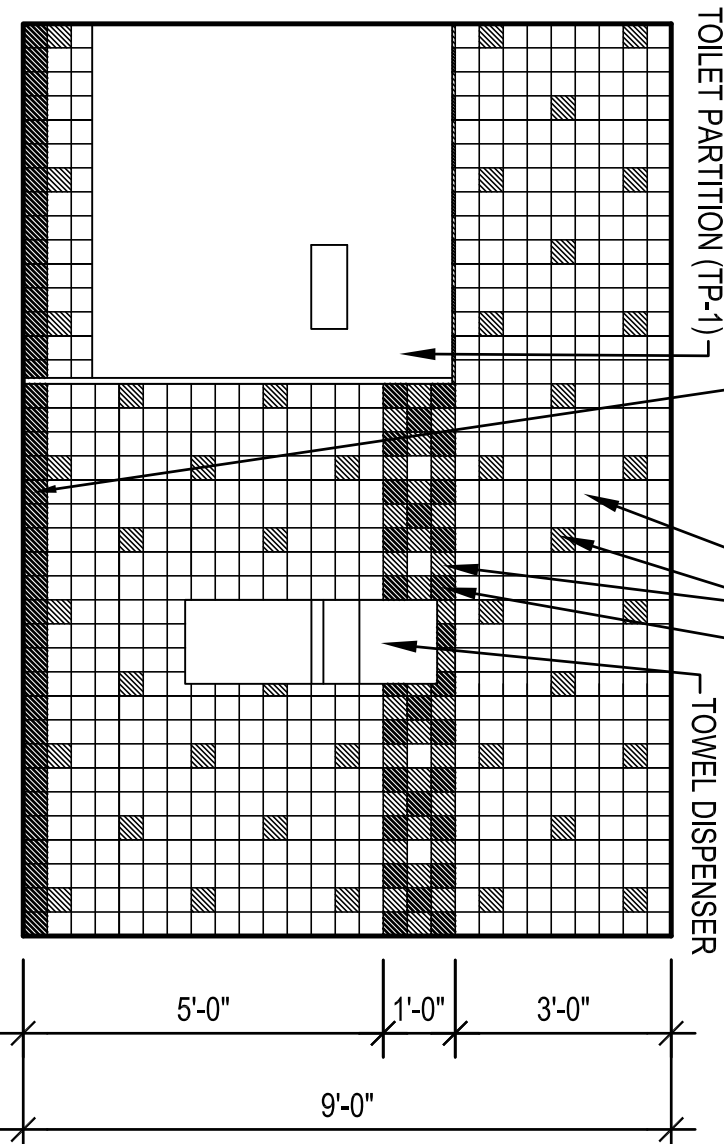
2
SID-4



INTERIOR ELEVATION
@ 111 MALE HEAD

SCALE 3/8" = 1'-0"

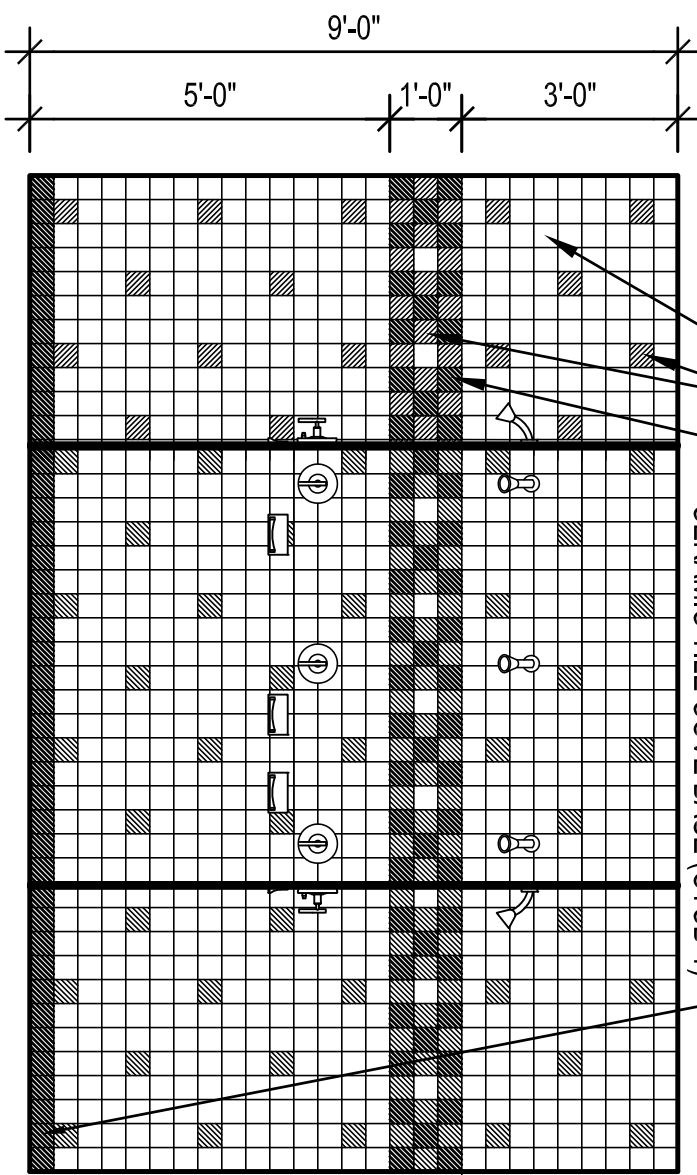
3
SID-4



INTERIOR ELEVATION
@ 111 MALE HEAD

SCALE 3/8" = 1'-0"

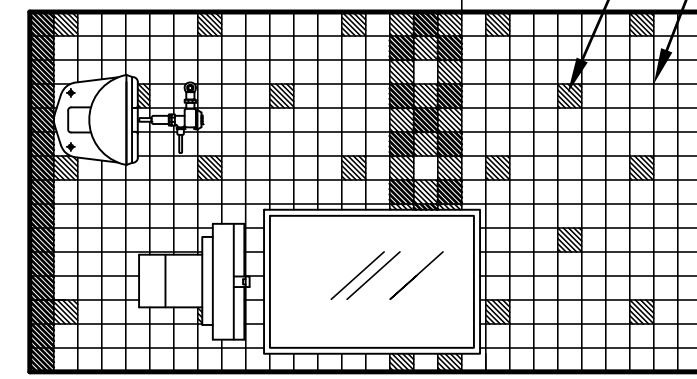
4
SID-4



INTERIOR ELEVATION
@ 112 MALE SHOWER

SCALE 3/8" = 1'-0"

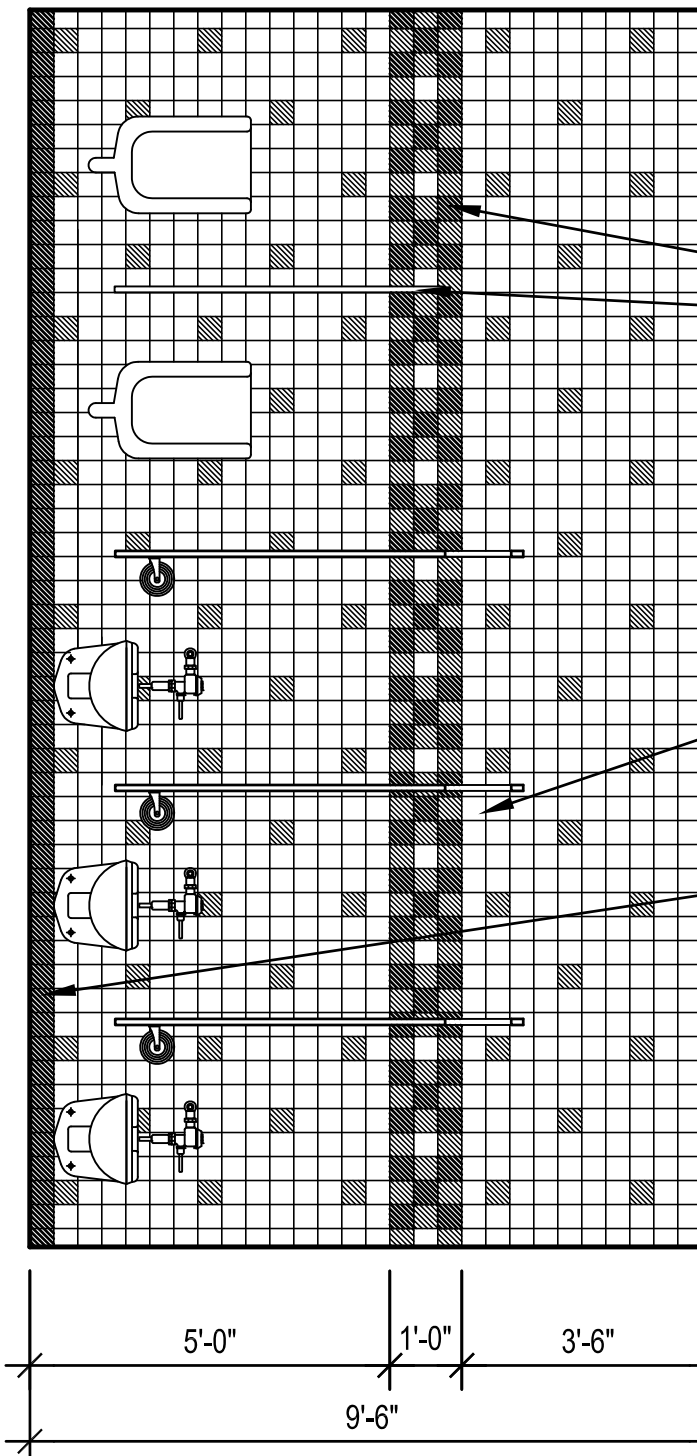
5
SID-4



INTERIOR ELEVATION
@ 211 MALE HEAD & 212 FEMALE HEAD

SCALE 3/8" = 1'-0"

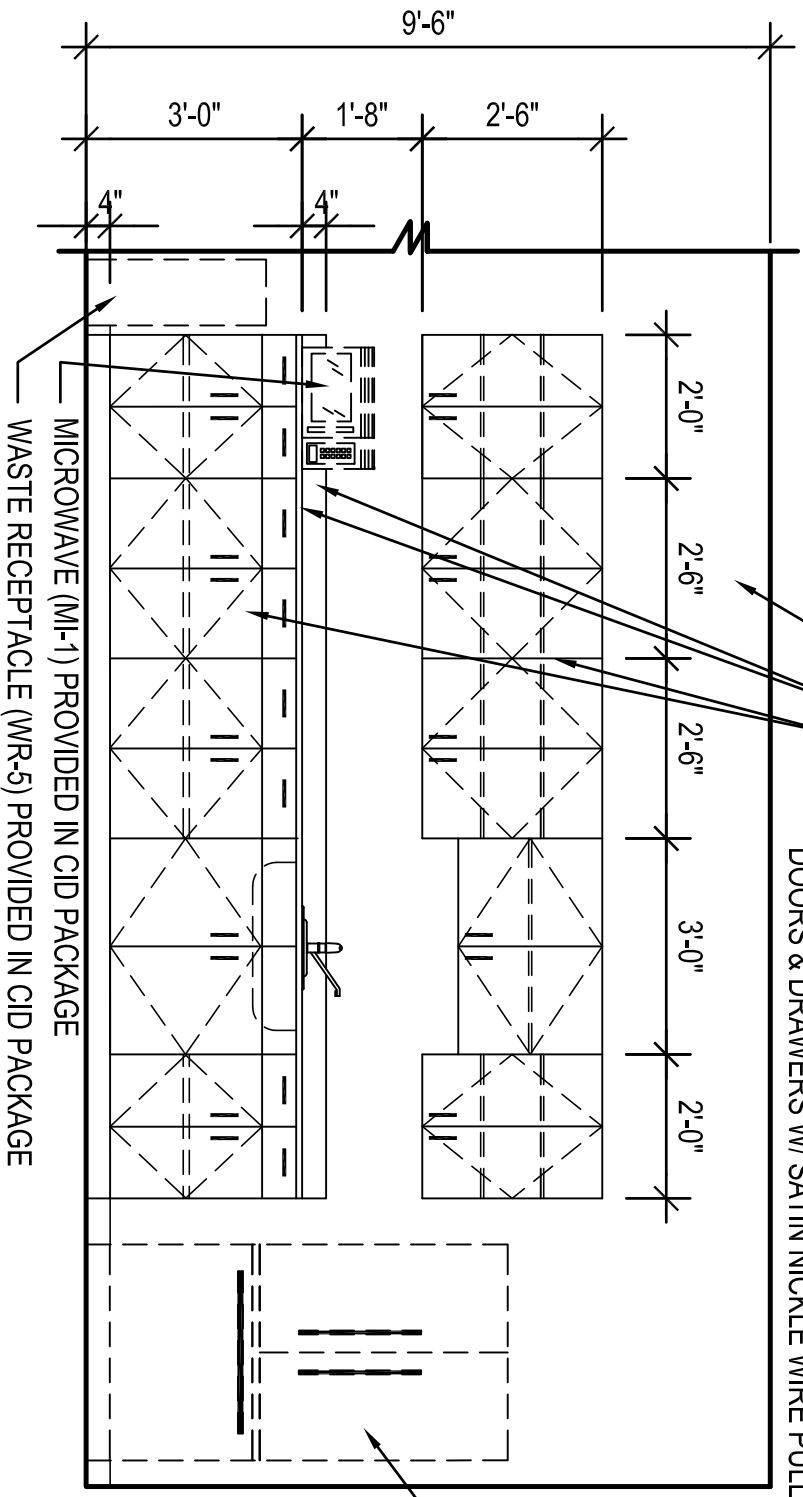
6
SID-4



INTERIOR ELEVATION
@ 211 MALE HEAD

SCALE 3/8" = 1'-0"

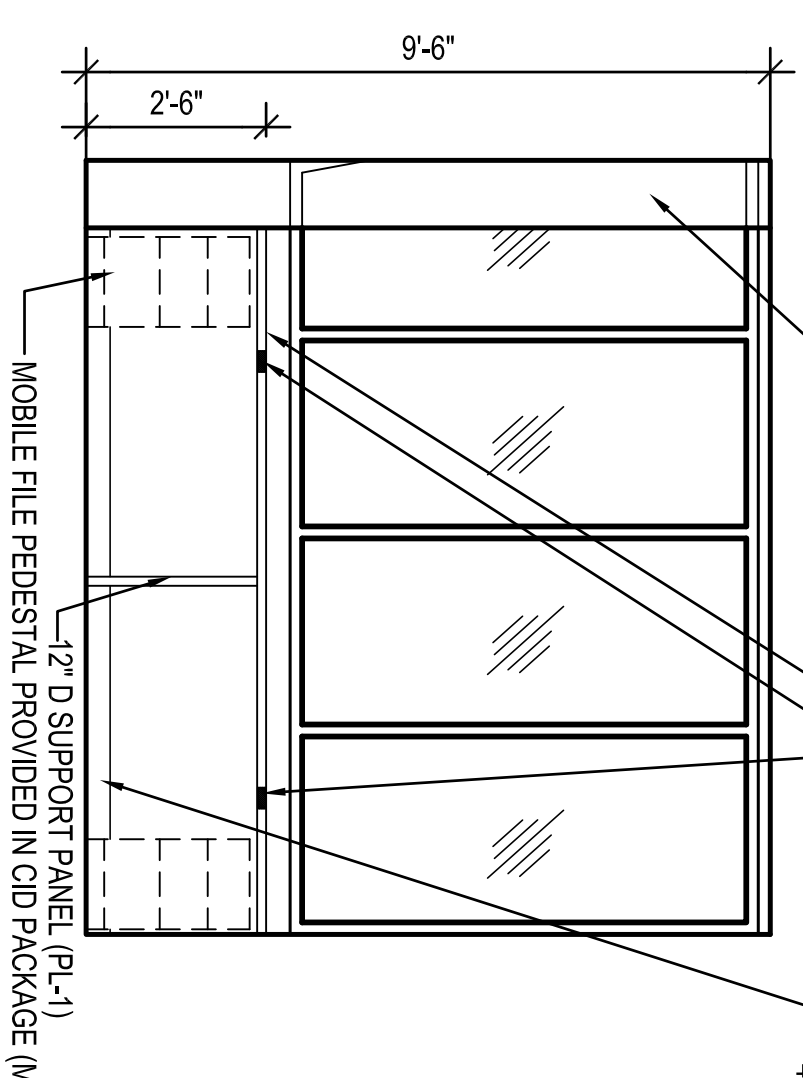
7
SID-4



INTERIOR ELEVATION
COFFEE STATION IN 200 CORRIDOR

SCALE 3/8" = 1'-0"

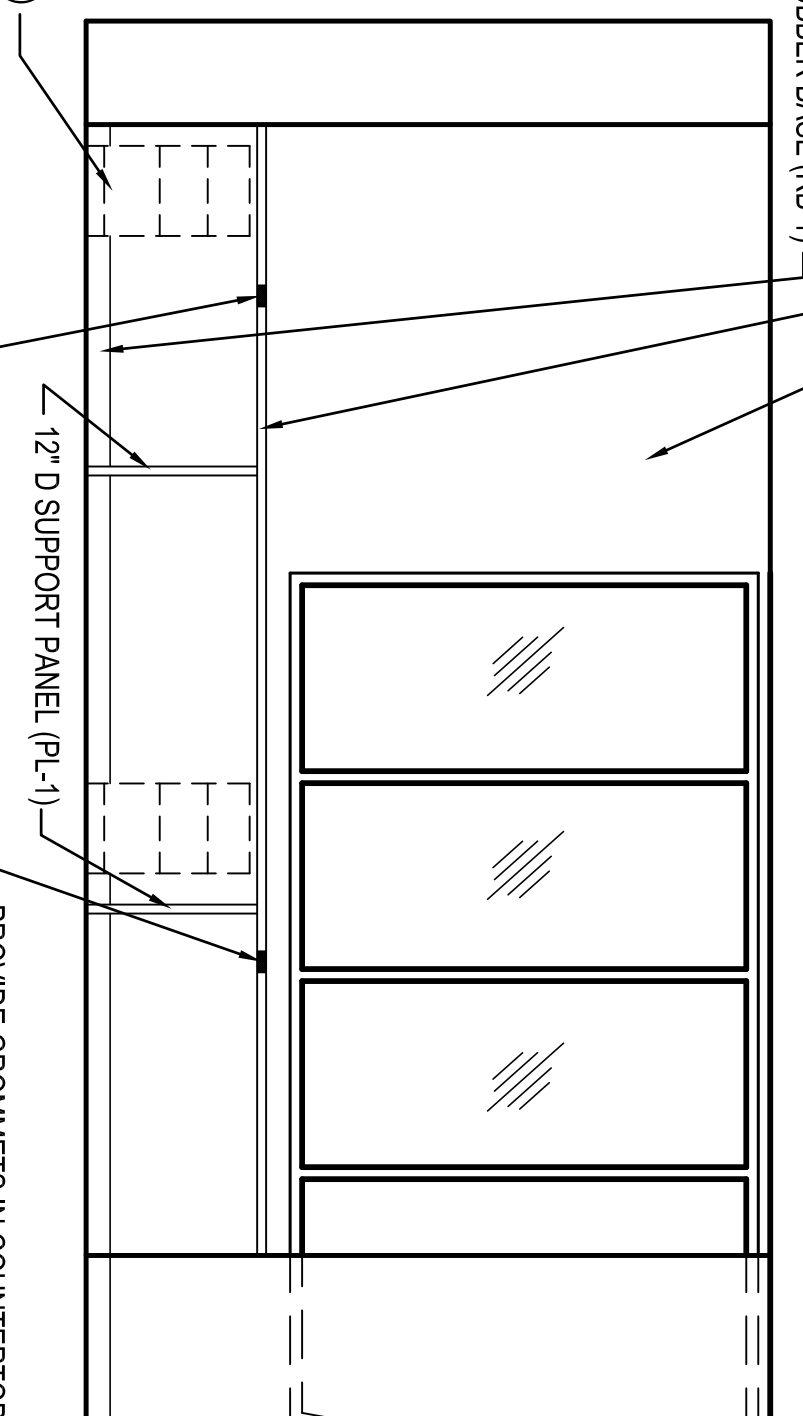
8
SID-4



INTERIOR ELEVATION
@ 206 RIVER OPS CONT. WATCH

SCALE 3/8" = 1'-0"

9
SID-4



INTERIOR ELEVATION
@ 206 RIVER OPS CONT. WATCH

SCALE 3/8" = 1'-0"

10
SID-4

SYM	DESCRIPTION	DATE	APPR

BROADMOOR DESIGN
BROADMOOR, L.L.C.
2740 NORTH ARNOULT ROAD, METAIRIE, LA 70002 (504) 885-5401
www.broadmoorllc.com

DEPARTMENT OF THE NAVY
NAVAL FACILITIES ENGINEERING COMMAND
NAVAL FACILITIES ENGINEERING COMMAND SOUTHEAST
IPT SOUTH ATLANTIC
NAVAL AIR STATION JACKSONVILLE
MISSISSIPPI
JOHN C. STENNIS SPACE CENTER
SOF RIVERINE AND COMBATANT
CRAFT OPERATIONS FACILITY
INTERIOR ELEVATIONS

NAVFAC DRAWING NO. 15026716
SHEET 69 OF 132
AUG. 11, 2009
SID-4
SUBMITTAL ISSUE



SID FINAL
SUBMITTAL ISSUE