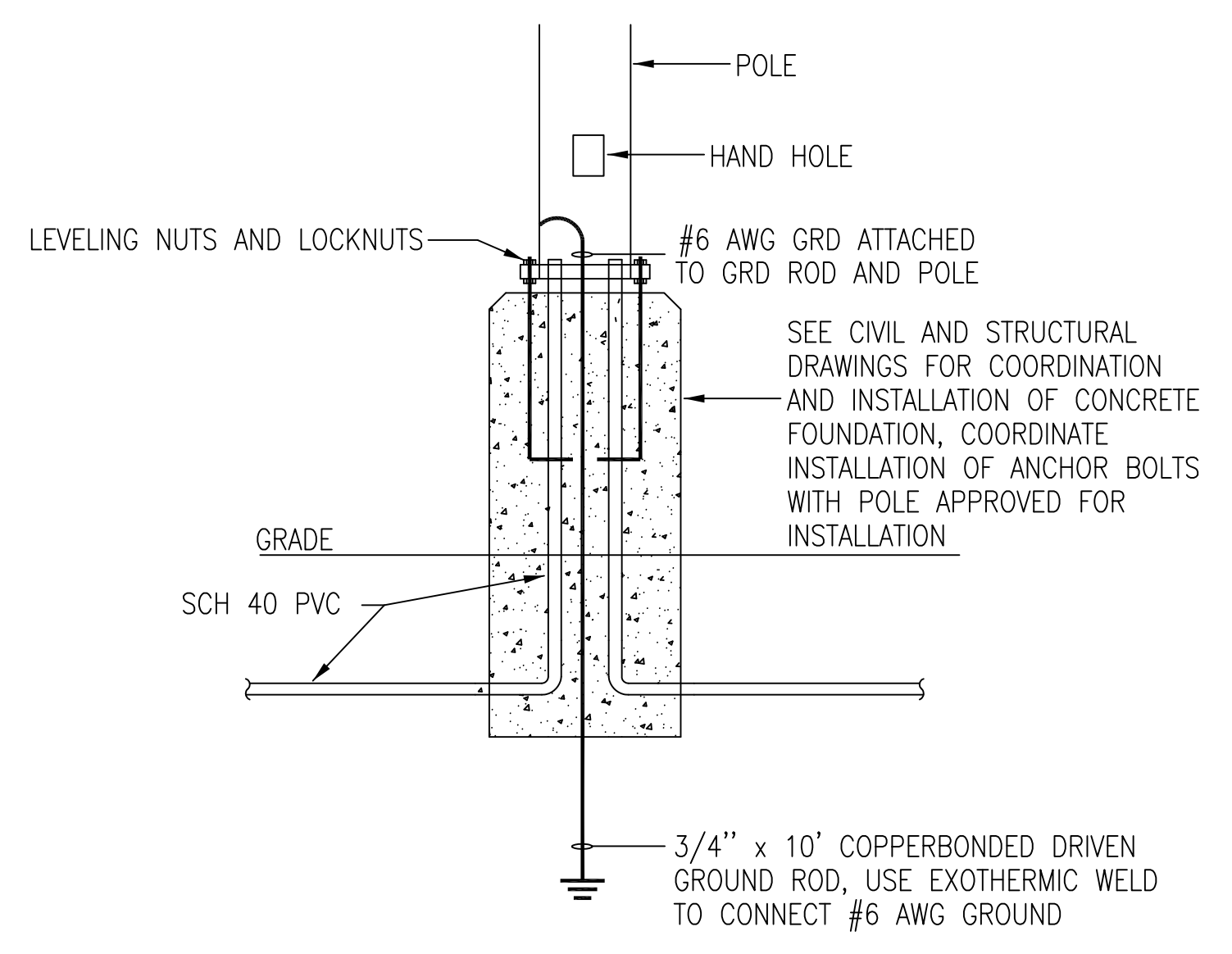
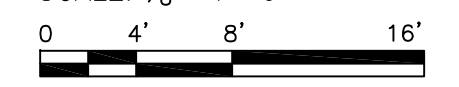


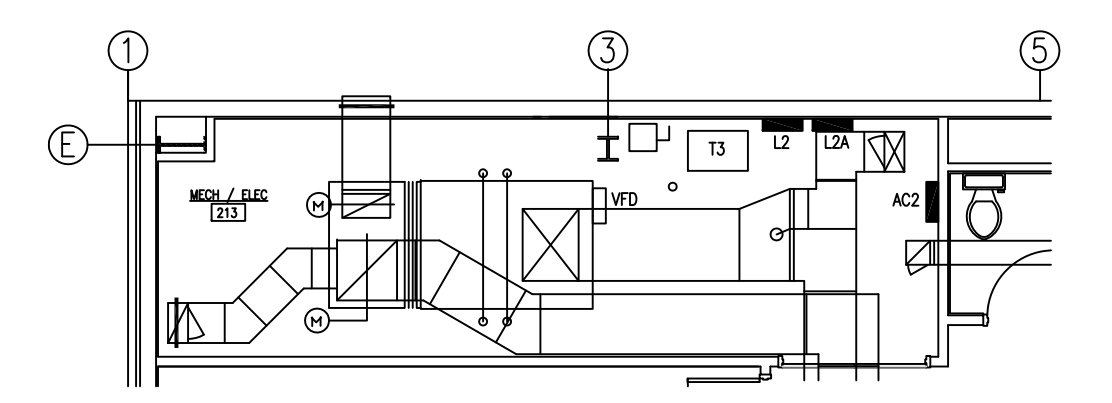
**EQUIPMENT YARD DETAIL**

SCALE: 1/8"=1'-0"



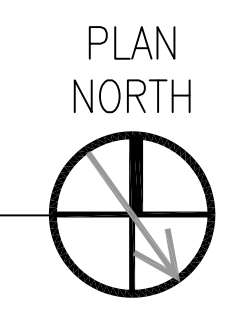
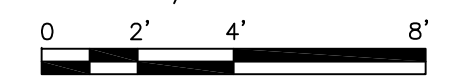
**LIGHT POLE INSTALLATION DETAIL**

NO SCALE



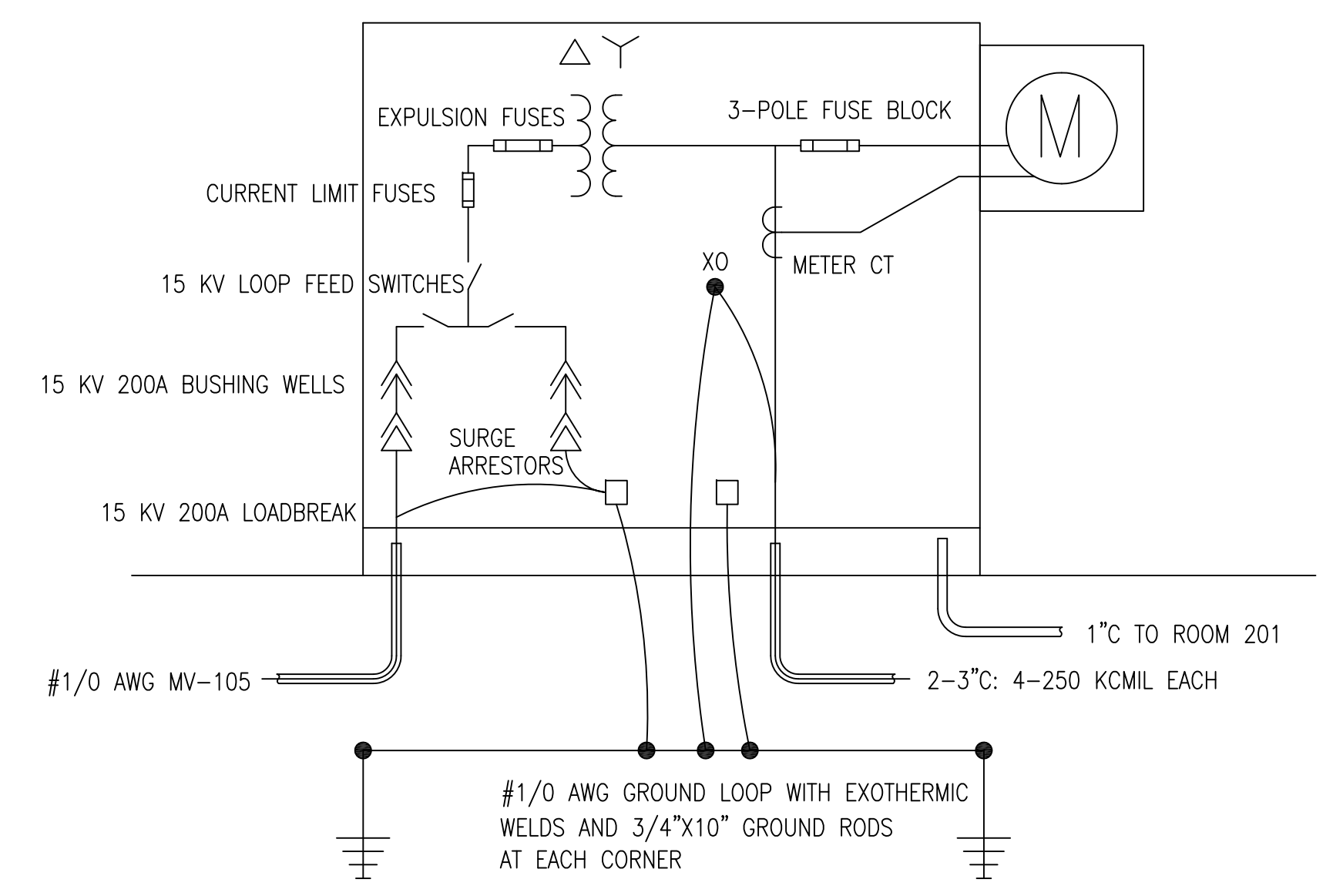
**MECH/ELEC ROOM 213 ENLARGED FLOOR PLAN-POWER**

SCALE: 1/4"=1'-0"



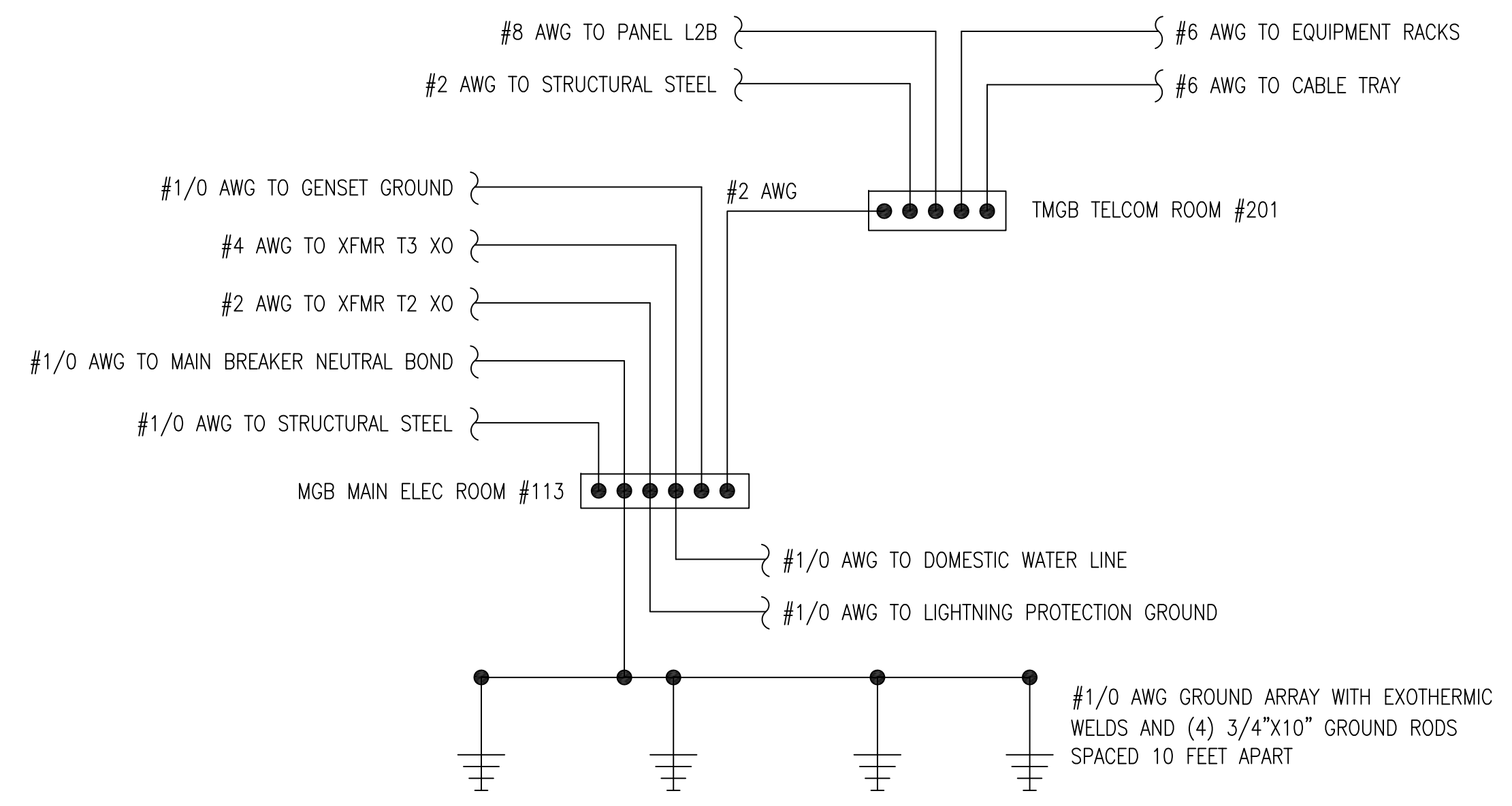
**SPECIFIC NOTES THIS SHEET:**

- ① 30A, NEMA-3R UNFUSED DISCONNECT. PROVIDE FINAL CONNECTIONS TO CHILLED WATER PUMP. ROUTE 3/4"C: 3-#10 AWG AND 1-#10 GRD TO VFD LOCATED IN MECH ROOM #214. SEE CONTINUATION SHEET E4.1.
- ② 200A, NEMA-3R UNFUSED DISCONNECT. 1-1/2"C: 3-#1 AWG AND 1-#6 GRD. PROVIDE FINAL CONNECTIONS TO CHILLER STARTER.
- ③ 2-2"C Routed TO MAIN ELEC ROOM #213 FOR ANTENNA CABLING BY OWNER. SEE SHEET E5.1 FOR FURTHER INFORMATION ON ROUTING TO RADIO ROOM #202.
- ④ 2-3"C: 4-250 KCMIL AND 1-#2 GRD. ROUTE FROM 450A MAIN DISCONNECT IN GENERATOR TO TRANSFER SWITCH IN MAIN ELEC ROOM #113.
- ⑤ 1-1"C: CONTROL WIRING FOR GENERATOR START/STOP. ROUTE TO TRANSFER SWITCH IN MAIN ELEC ROOM #113.
- ⑥ 1"C: 4-#8 AWG AND 1-#10 GRD. PROVIDE FINAL CONNECTIONS TO LOAD CENTER PROVIDED IN GENERATOR. VERIFY FACTORY PROVIDED BRANCH CONNECTIONS TO COOLANT AND ALTERNATOR HEATERS, AND BATTERY CHARGER.
- ⑦ ONAN DQDAA 250KW STANDBY GENERATOR, DIESEL DRIVEN, WITH 400 GALLON SUB-BASE FUEL TANK, SOUND ATTENUATED WEATHERPROOF ENCLOSURE, CRITICAL GRADE EXHAUST SILENCER, AND 450A MAIN CIRCUIT BREAKER.
- ⑧ PROVIDE FINAL CONNECTION TO 120V, 668W CHILLER OIL HEATER.



**PAD-MOUNT TRANSFORMER T1 DETAIL**

NO SCALE



**GROUNDING DIAGRAM**

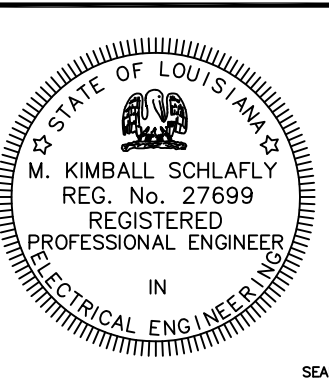
NO SCALE

**RECORD DRAWING**  
LETTER DATED  
5-27-10

NO.	DATE	DESCRIPTION	BY
AS-BUILT REVISIONS	5-27-10		



**SCHLAFLY ENGINEERING LLC**  
121 SOUTH GENOIS STREET  
NEW ORLEANS LA 70119  
PHONE 504-415-3347  
FAX 504-482-7943  
M. KIMBALL SCHLAFLY, P.E.  
LA REG 27699



DES: K. SCHLAFLY | DRW: K. SCHLAFLY  
REVIEWED BY: R. WILTSE  
PM/DM: T. ARTRIP  
CHIEF ENG/ARCH: P. DAMMON

DEPARTMENT OF THE NAVY  
NAVAL FACILITIES ENGINEERING COMMAND SOUTHEAST  
NAVAL AIR STATION JACKSONVILLE  
MISSISSIPPI  
JOHN C. STENNIS SPACE CENTER  
**SOF RIVERINE AND COMBATANT CRAFT OPERATIONS FACILITY**  
ELECTRICAL DETAILS

CODE ID. NO. N4412	SIZE D
SCALE: AS SHOWN	
MAXIMO NO. #####	
STA. PROJ. NO. P-210	
WORK ORDER NO. 510247	
CONSTR. CONTR. NO. N62467-05-D-0096	
NAVFAC DRAWING NO. 15026750	
SHEET 103 OF 132	

**E1.5**

REVDATE: FILE NAME: C:\Schlafly\ENGR 08010 SDF Rivertine Drawings Elec-5-As-built-E1.0.dwg LAYOUT NAME: E1.5 PLOTTED: Friday, May 28, 2010 - 3:01pm