

Remote Area: BLDG 2441 BOAT MAINTENANCE

CALCULATION DESIGN CRITERIA	
STANDARD	NFPA #13 - Ord Hazard Gr 2
OCCUPANCY CLASS	New Business
MAX. COVERAGE per HEAD	113 MAX. SF
DENSITY	.20 GPM/SQ. FT. 3900 SF
SPRINKLER	TY-FRB
ORIFICE	1/2" K=5.6
WATER FLOW INFORMATION:	
STATIC	75.0 PSI
RESIDUAL	68.0 PSI
FLOW	860 GPM
AT LOOP CONNECTION SYSTEM REQUIRES	1574.14 GPM @ 40.335 PSI

INCLUDING 500 GPM HOSE ALLOWANCE

LEGEND
 FGC DENOTES FLEXIBLE GROOVE COUPLING TYCOO FIG 705 OR EQUAL
 GC DENOTES RIGID GROOVE COUPLING TYCOO FIG 772 OR EQUAL
 GRC DENOTES GROOVE REDUCING COUPLING FIG 716 OR EQUAL
 GRVD CONC RED DENOTES GROOVED CONCENTRIC REDUCER TYCOO FIG 250 OR EQUAL
 FF-CL DENOTES FINISHED FLOOR TO CENTERLINE OF PIPE

MAINTENANCE / STAGING BLDG. 2441

Remote Area: BLDG 2440 ARMORY & MISC AREA

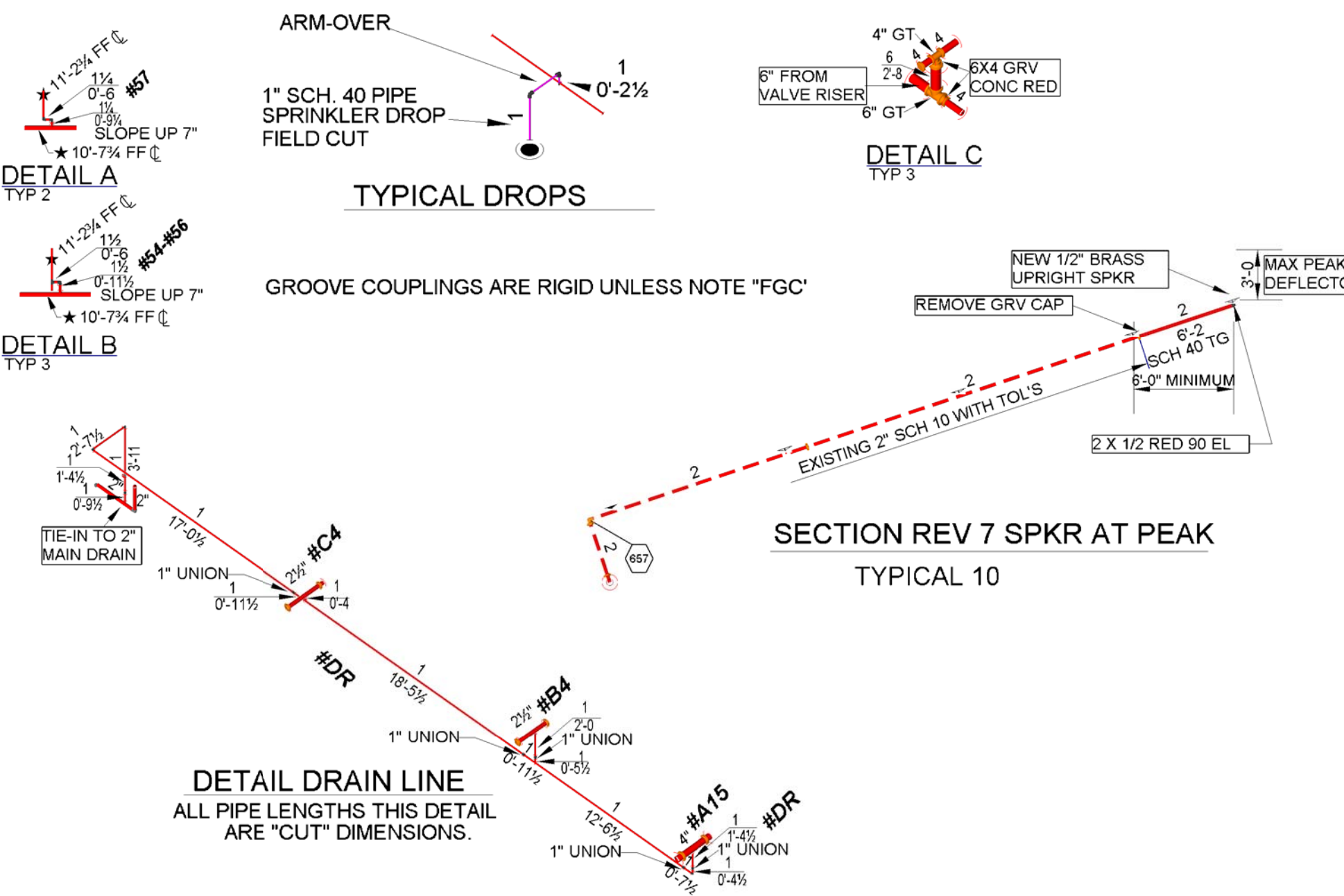
CALCULATION DESIGN CRITERIA	
STANDARD	NFPA #13 MISC AREA, Light Hazard
OCCUPANCY CLASS	New Business
MAX. COVERAGE per HEAD	VARIES
DENSITY	10 MISC. GPM/SQ. FT. 3000 SF
SPRINKLER	TY-FRB
ORIFICE	1/2" K=5.6
WATER FLOW INFORMATION:	
STATIC	75.0 PSI
RESIDUAL	68.0 PSI
FLOW	860 GPM
AT LOOP CONNECTION SYSTEM REQUIRES	1195.88 GPM @ 34.782 PSI

INCLUDING 500 GPM HOSE ALLOWANCE

Remote Area: BLDG 2440 CAGES

CALCULATION DESIGN CRITERIA	
STANDARD	NFPA #13 - Ord Hazard Gr 1
OCCUPANCY CLASS	New Business
MAX. COVERAGE per HEAD	127.5 MAX. SF
DENSITY	.15 GPM/SQ. FT. 3000 SF
SPRINKLER	TY-FRB
ORIFICE	1/2" K=5.6
WATER FLOW INFORMATION:	
STATIC	75.0 PSI
RESIDUAL	68.0 PSI
FLOW	860 GPM
AT LOOP CONNECTION SYSTEM REQUIRES	984.26 GPM @ 31.147 PSI

INCLUDING 500 GPM HOSE ALLOWANCE



NEW SPRINKLERS

TYPE	SIN	K=	ORIFICE	TEMP	FINISH	CANOPY	SYMBOL	QTY
TYCO TY-FRB QR	TY3231	5.6	1/2"	155 F	WHITE	PENDENT	⊙	18
TYCO TY-FRB QR	TY3131	5.6	1/2"	155 F	BRASS	UPRIGHT	⊙	59
TYCO TY-FRB QR	TY4131	8.0	17/32"	200 F	BRASS	UPRIGHT	⊙	52
TYCO TY-FRB QR	TY4131	8.0	17/32"	286 F	BRASS	UPRIGHT	⊙	8
TYCO TY-FRB QR	TY3131	5.6	1/2"	200 F	BRASS	UPRIGHT	⊙	10

TOTAL THIS SHEET 147

- GENERAL NOTES**
- SCOPE OF WORK
 SIMPLEXGRINNELL TO PROVIDE TWO NEW WET PIPE FIRE SPRINKLER SYSTEMS (1) FOR THE NEW OPERATIONS BLDG #2440 & THE BOAT MAINTENANCE BLDG #2441, AND (1) FOR THE BOAT STORAGE BLDG #2442.
 - BASIS OF DESIGN:
 LIGHT HAZARD AREAS - DESIGN DENSITY: .10 GPM/SQ. FT. OVER 3000 SQ. FT.
 ORDINARY HAZARD GROUP 1 - DESIGN DENSITY: .15 GPM/SQ. FT. OVER 3000 SQ. FT.
 ORDINARY HAZARD GROUP 2 - DESIGN DENSITY: .20 GPM/SQ. FT. OVER 3000 SQ. FT. (EXCEPT AS NOTED - BELOW PLATFORM)
 AREA HAS BEEN INCREASED BY 30% WHERE ROOF SLOPE EXCEEDS 2:12 AS PER NFPA 13 11.2.3.2.4.
 HYDRAULIC CALCULATIONS INCLUDE A HOSE ALLOWANCE OF 500 GPM, EXCEPT FOR THE 2ND FLOOR OPERATION BLDG, WHICH IS LIGHT HAZARD, AND HAS A HOSE ALLOWANCE OF 250 GPM.
 - PIPE AND FITTINGS
 1 1/2" AND SMALLER PIPE TO BE THREADED BLACK SCH 40 WITH BLACK C.I. SCREW FITTINGS.
 2" AND LARGER PIPE TO BE GROOVED BLACK SCH 10 WITH GROOVED FITTINGS & COUPLINGS AND WELDED OUTLETS. SPRINKLERS TO BE CENTER OF TILE.
 - HANGERS
 ALL HANGERS AND SUPPORTS TO CONFORM TO NFPA 13 AND PIPE MANUFACTURERS RECOMMENDATIONS.
 - FIRE CAULKING
 ALL PENETRATIONS THROUGH FIRE RATED WALLS ARE TO BE SEALED WITH FIRE CAULK TO MAINTAIN THE FIRE RATING.
 - SPRINKLER SYSTEMS SHALL INCLUDE EARTHQUAKE PROTECTION PER D401001 1.2. SEE SH # FP-5 FOR DETAILS & NOTES.

PLAN 1ST FLOOR OPERATIONS BLDG 2440 / 2441

SPRINKLERS TO BE POSITIONED IN CENTERLINE OF TILE, EXCEPT WHERE OBSTRUCTIONS REQUIRE RELOCATING.
 ZZZ DENOTES FIRE WALL



ALL MATERIAL TO BE AMERICAN MADE

AS-BUILT
06/07/10

REV	DESCRIPTION	DATE	APPR
8	REVISED PER AS-BUILT	06/07/10	
7	REVISED TO ADD SPUR IN PEAK (BLDG REVISION)	05/06/10	
6	REVISED PER FAB REVISIONS & FIELD NOTES	09/23/09	
5	REVISED PER NAVFAC COMMENTS RECD 09/03/09	09/09/09	
4	REVISED PER NAVFAC COMMENTS RECD 08/17/09	08/26/09	
3	REVISED PER LATEST DRAWINGS	07/02/09	
2	REVISED PER URS COMMENTS & SEISMIC DESIGN	06/26/09	
1	REVISED PER PFE COMMENTS	06/08/09	

DEPARTMENT OF THE NAVY
 NAVAL FACILITIES ENGINEERING COMMAND
 NAVFAC SOUTHEAST
 JOHN C. STENNIS SPACE CENTER, MISSISSIPPI
SOF RIVERINE AND COMBATANT CRAFT OPERATIONS FACILITY
OPERATIONS BLDG 2440 & MAINTENANCE BLDG 2441
1ST FLOOR PLAN

CODE ID: NO 80091 SIZE: D
 SCALE: 1/8" = 1'-0"
 MAXIMUM NO. # # # # #
 STA. PROJ. NO. P-210
 WORK ORDER NO. 510247
 CONSTR. CONTR. NO. N62467-05-D-0096
 NAVFAC DRAWING NO. 15026773
 SHEET 126 OF 132
 SIMPLEXGRINNELL SH #FP-3
 SG JOB # 269-941989101