

A

B

C

D

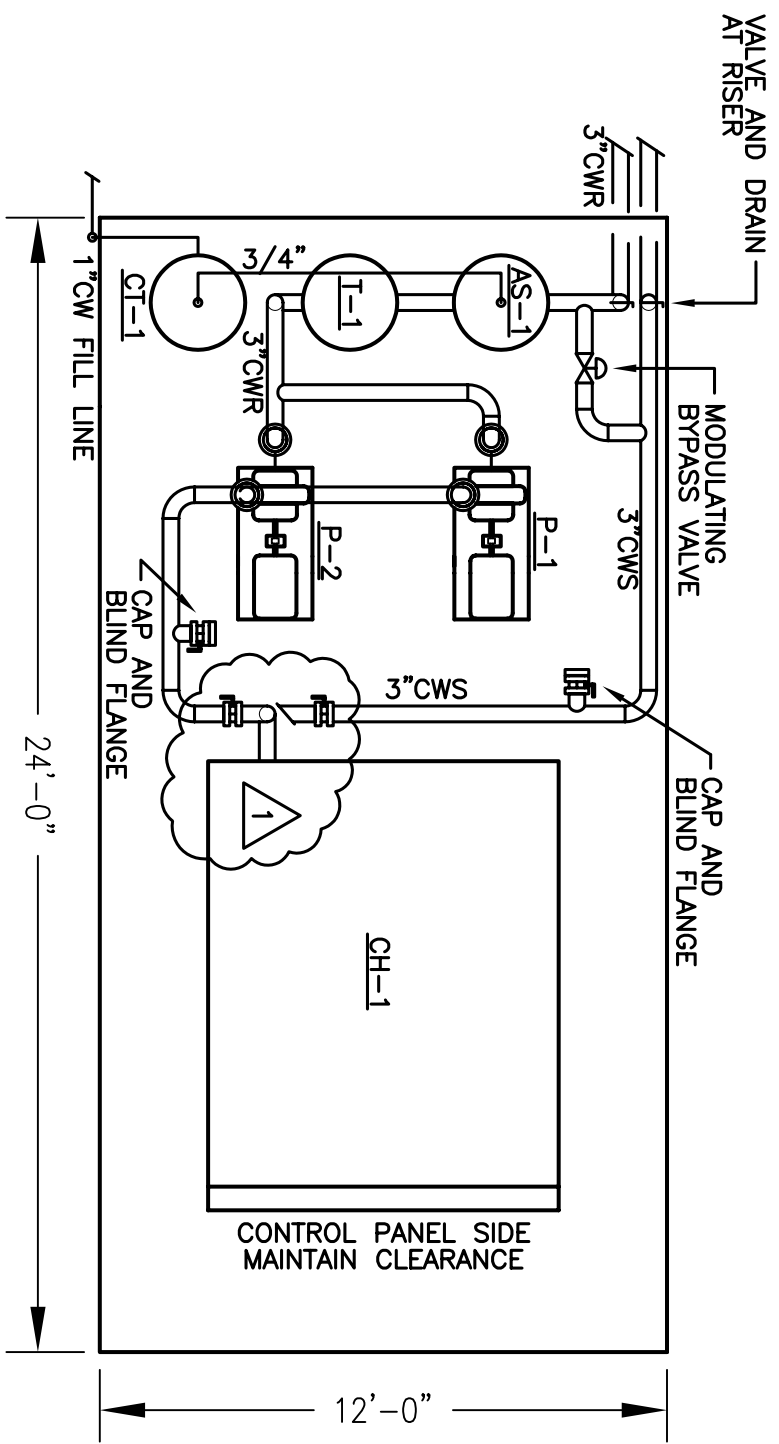
1

2

3

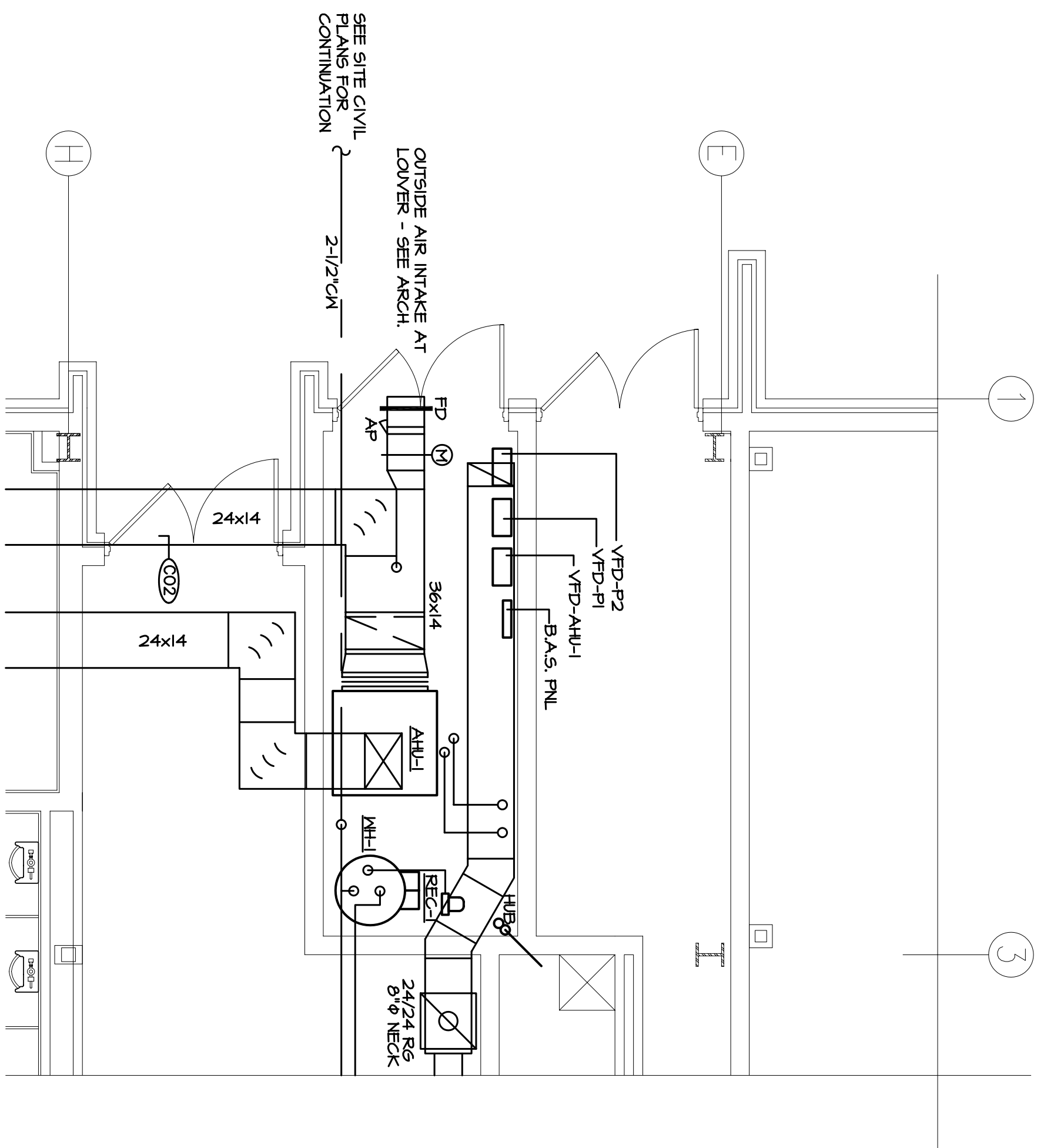
4

5



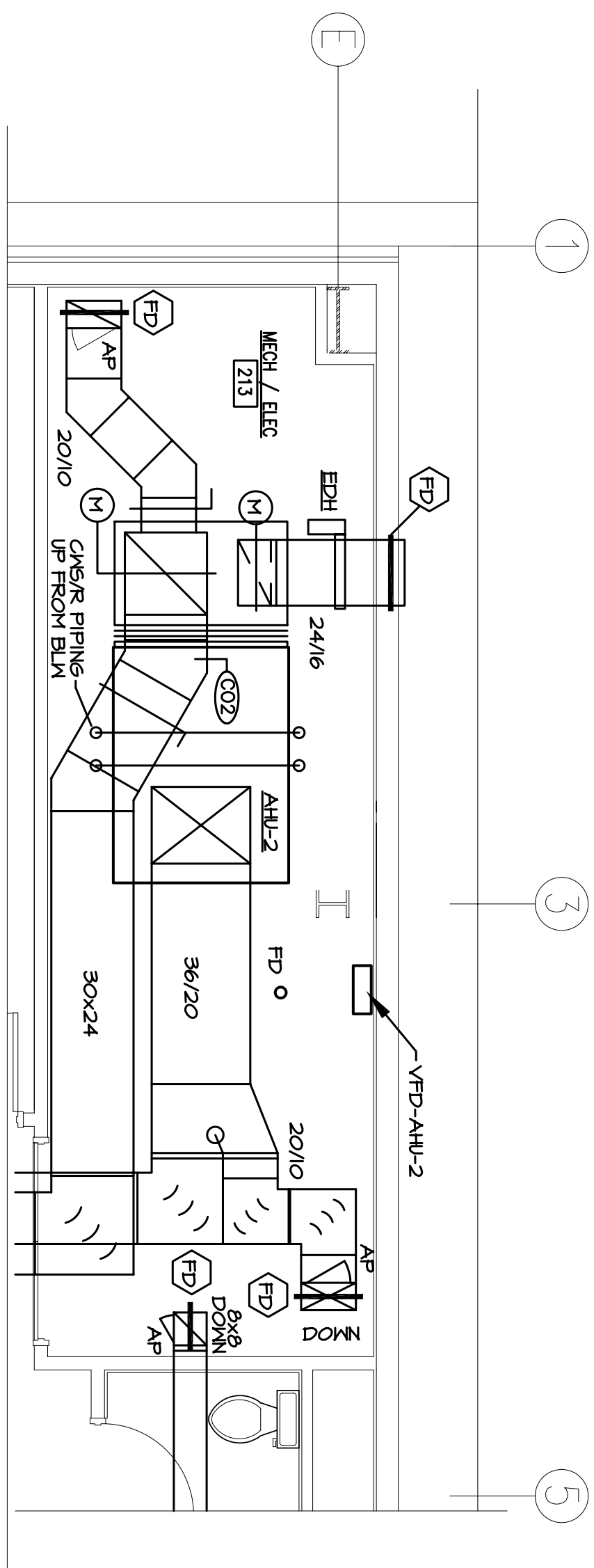
ENLARGED MECHANICAL EQUIPMENT YARD  
SCALE: 1/4"=1'-0"

M1.1 3  
M3.1



ENLARGED MECHANICAL ROOM PLAN - FIRST FLOOR  
SCALE: 1/4"=1'-0"

M1.1 1  
M3.1

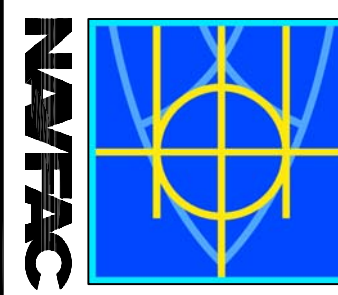


ENLARGED MECHANICAL ROOM PLAN - SECOND FLOOR  
SCALE: 1/4"=1'-0"

M1.2 2  
M3.1

**DAMIEN W. SERAUSKAS, P.E.**  
PROFESSIONAL ENGINEERING SERVICES  
15 CYPRESS POINT LANE NEW ORLEANS, LA 70131  
VOICE: (504)866-2600 FAX: (504)2188480

SYM	DESCRIPTION	DATE	APPR
1	AS-BUILT CONDITIONS SHOWN	06/10/2010	DWS



**DAMMON**  
ENGINEERING, INC.  
CHIEF ENGINEER: CHRISTOPHER DAMMON, P.E.  
1095 FLORIDA AVENUE  
SUITE 100, LA 70088  
(980) 649-5802

DEPARTMENT OF THE NAVY  
NAVAL FACILITIES ENGINEERING COMMAND  
NAVAL FACILITIES ENGINEERING COMMAND SOUTHEAST  
IPT GULF COAST  
MISSISSIPPI  
JOHN C. STENNIS SPACE CENTER  
SOF RIVERINE AND COMBATANT  
CRAFT OPERATIONS FACILITY - PRE-FINAL  
ENLARGED PLANS AND DETAILS

REVIEWED BY: R. WILTSE  
P/W/T/O: T. ARTHUR  
CHIEF ENGINEER: P. DAMMON

CODE ID NO. 14412 SIZE: 0  
SCALE: AS SHOWN  
DRAWING NO. #####  
SPL. PROJ. NO. P-210  
JOB# ORDER NO. 510247  
CONTR. CONTR. NO. N62467-05-D-0096  
NAVFAC DRAWING NO. 150267136  
SHEET 89 OF 132  
**M3.1**

1

2

3

4

5