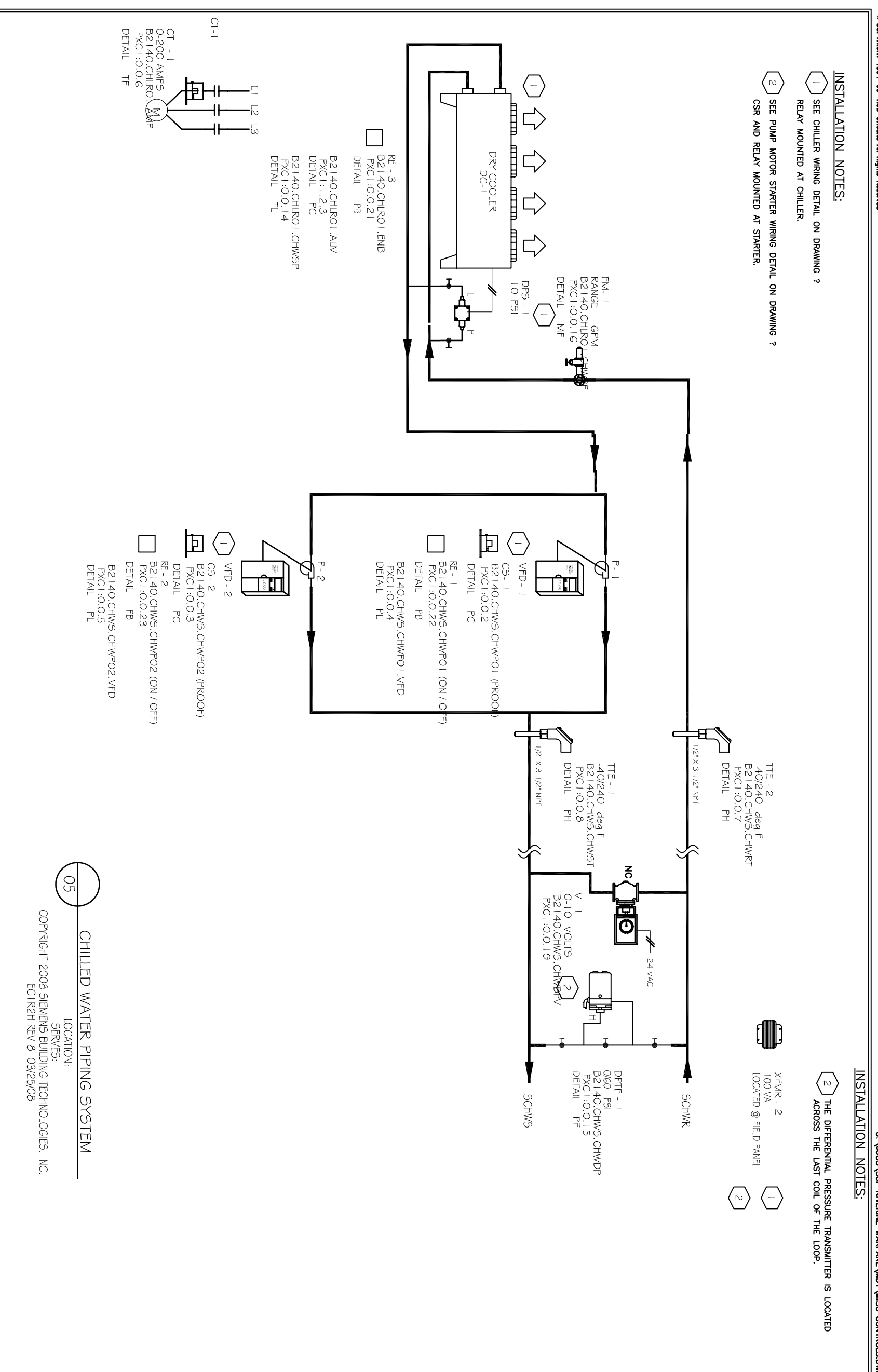
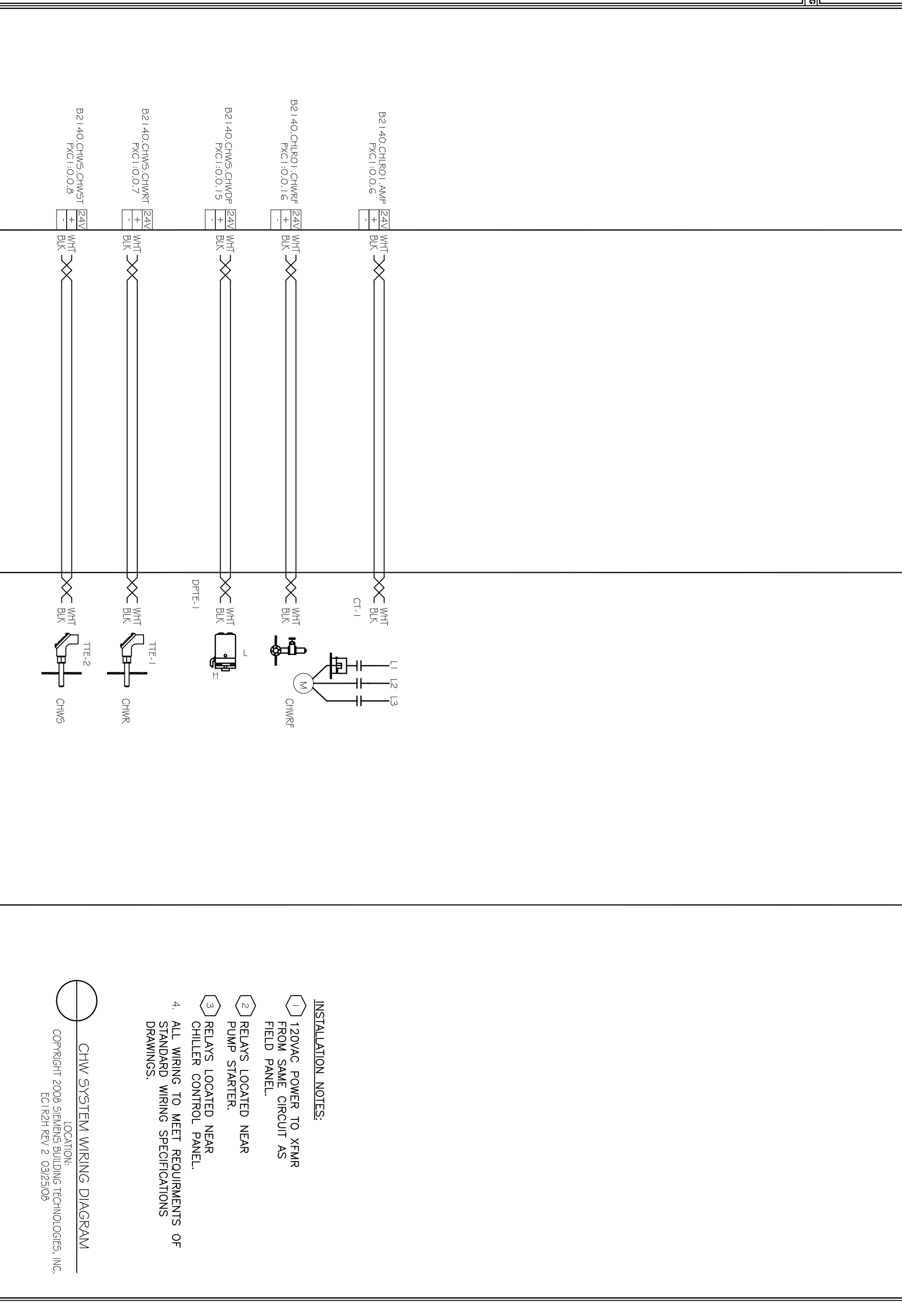
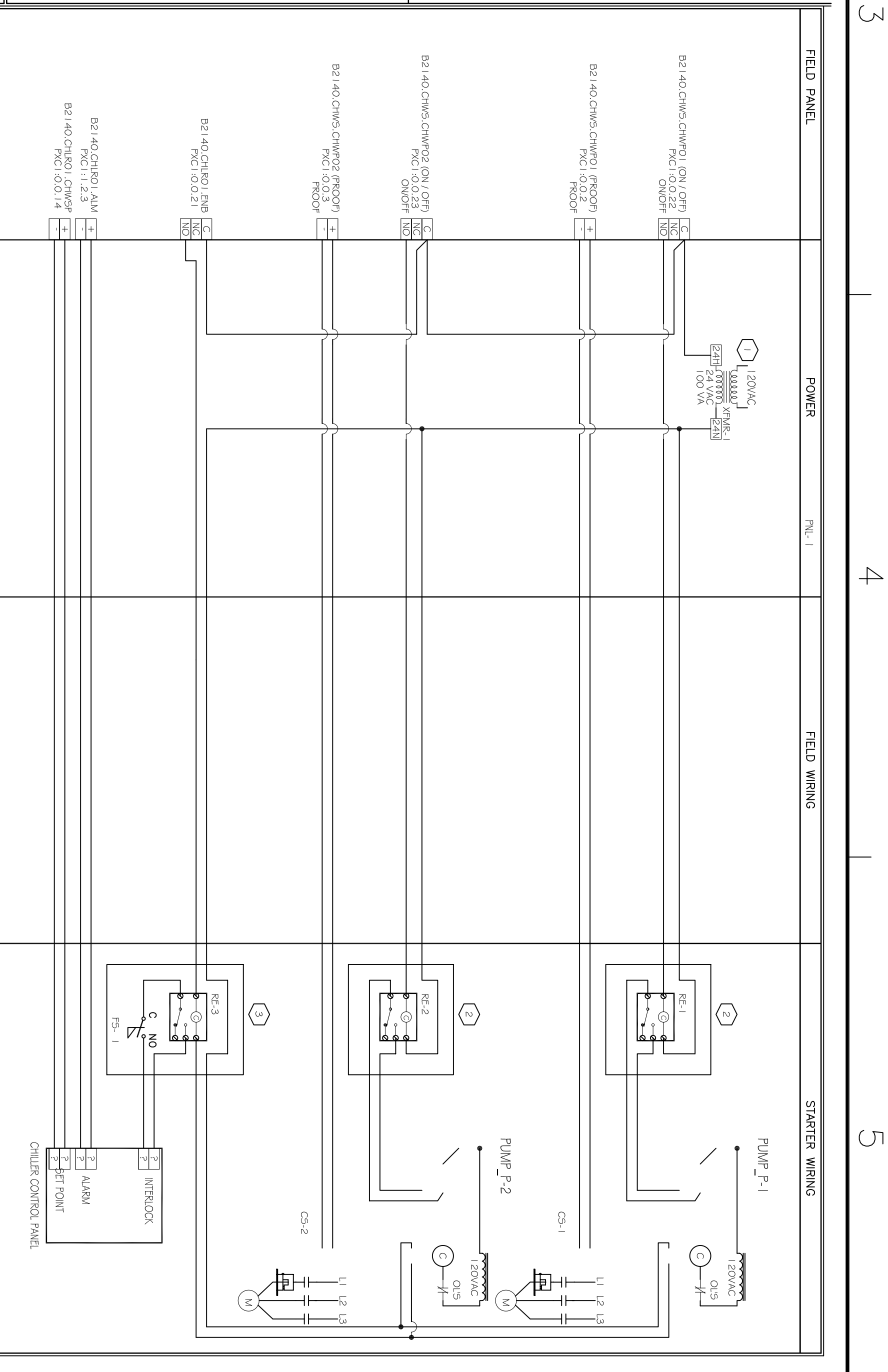


REVISION HISTORY	SIEMENS	SIEMENS	SIEMENS
05	150 Teal Street Suite 100 St. Rose, LA 70087 Phone: (504)466-9300 Fax: (504)464-6800	SOF Riverine Warfare Center Stennis Space Center, MS Drawing No. 106/26/09 Date: 06/09/09 Author: JWW Checker: JWW	SOF Riverine Warfare Center Stennis Space Center, MS Drawing No. 106/26/09 Date: 08/21/09 Author: JWW Checker: JWW



REVISION HISTORY	SIEMENS	SIEMENS	SIEMENS
05	150 Teal Street Suite 100 St. Rose, LA 70087 Phone: (504)466-9300 Fax: (504)464-6800	SOF Riverine Warfare Center Stennis Space Center, MS Drawing No. 106/26/09 Date: 08/21/09 Author: JWW Checker: JWW	SOF Riverine Warfare Center Stennis Space Center, MS Drawing No. 106/26/09 Date: 08/21/09 Author: JWW Checker: JWW



REVISION HISTORY	SIEMENS	SIEMENS	SIEMENS
05A	150 Teal Street Suite 100 St. Rose, LA 70087 Phone: (504)466-9300 Fax: (504)464-6800	SOF Riverine Warfare Center Stennis Space Center, MS Drawing No. 106/26/09 Date: 08/21/09 Author: JWW Checker: JWW	SOF Riverine Warfare Center Stennis Space Center, MS Drawing No. 106/26/09 Date: 08/21/09 Author: JWW Checker: JWW

RECORD DRAWING	06/10/2010	DWS
AS-BUILT	06/10/2010	DWS
DESCRIPTION	DATE	APPR
1		

DAMMON ENGINEERING, INC.
 CHEF ENGINEER: P. DAMMON
 1005 FLORIDA AVENUE
 SUITE 100
 SLIDEL, LA 70568
 (980) 649-8302

REVIEWED BY: R. WILKIE
 P/W/TE: T. ARTHUR
 CHEF ENGINEER: P. DAMMON

DEPARTMENT OF THE NAVY
 NAVAL FACILITIES ENGINEERING COMMAND
 NAVAL FACILITIES ENGINEERING COMMAND SOUTHEAST
 IPT GULF COAST
 MISSISSIPPI
 JOHN C. STENNIS SPACE CENTER
SOF RIVERINE AND COMBATANT CRAFT OPERATIONS FACILITY - PRE-FINAL
 ENLARGED PLANS AND DETAILS

M4.4
 SHEET 93 OF 132
 DRAWING REVISION 01 JAN 2009