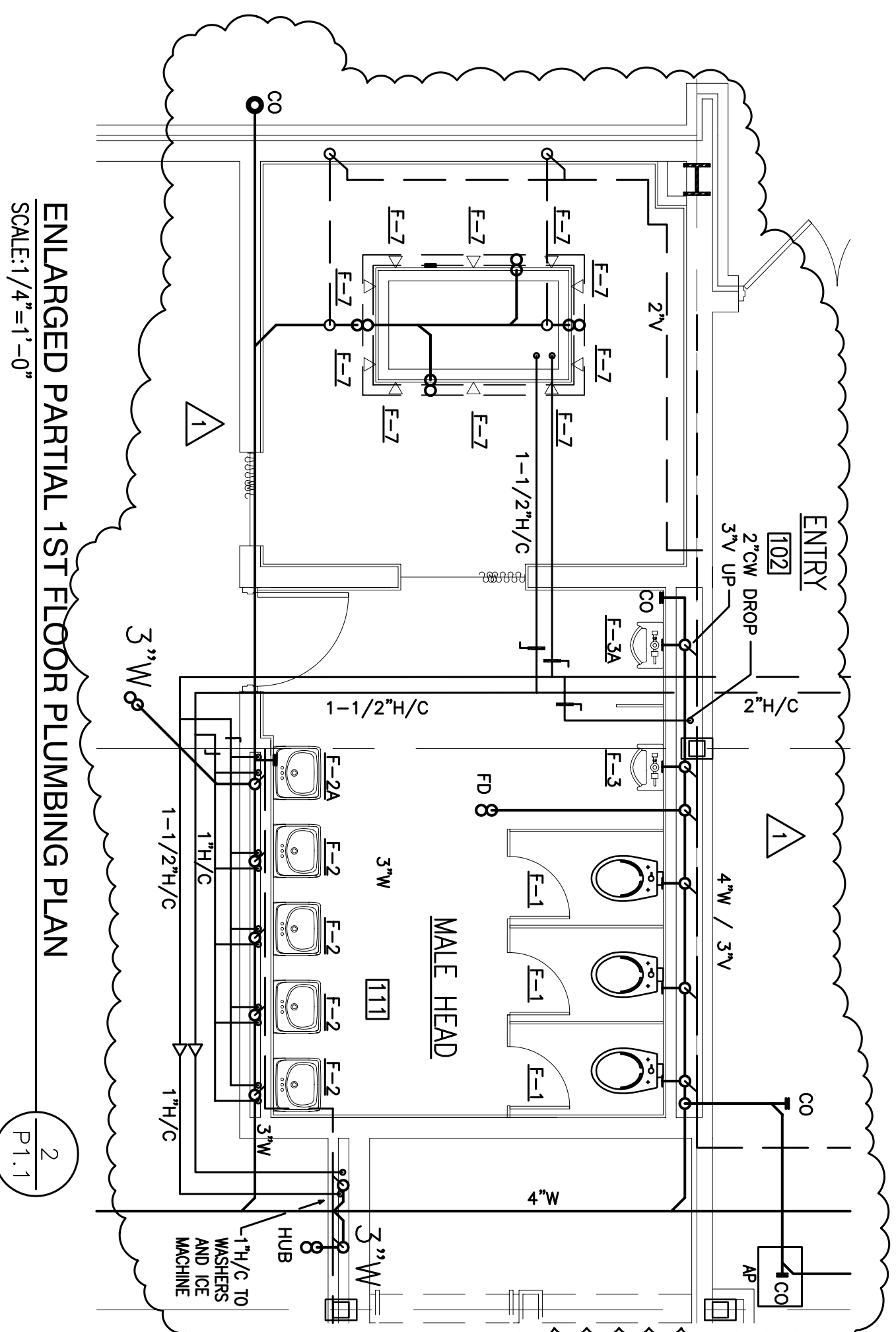
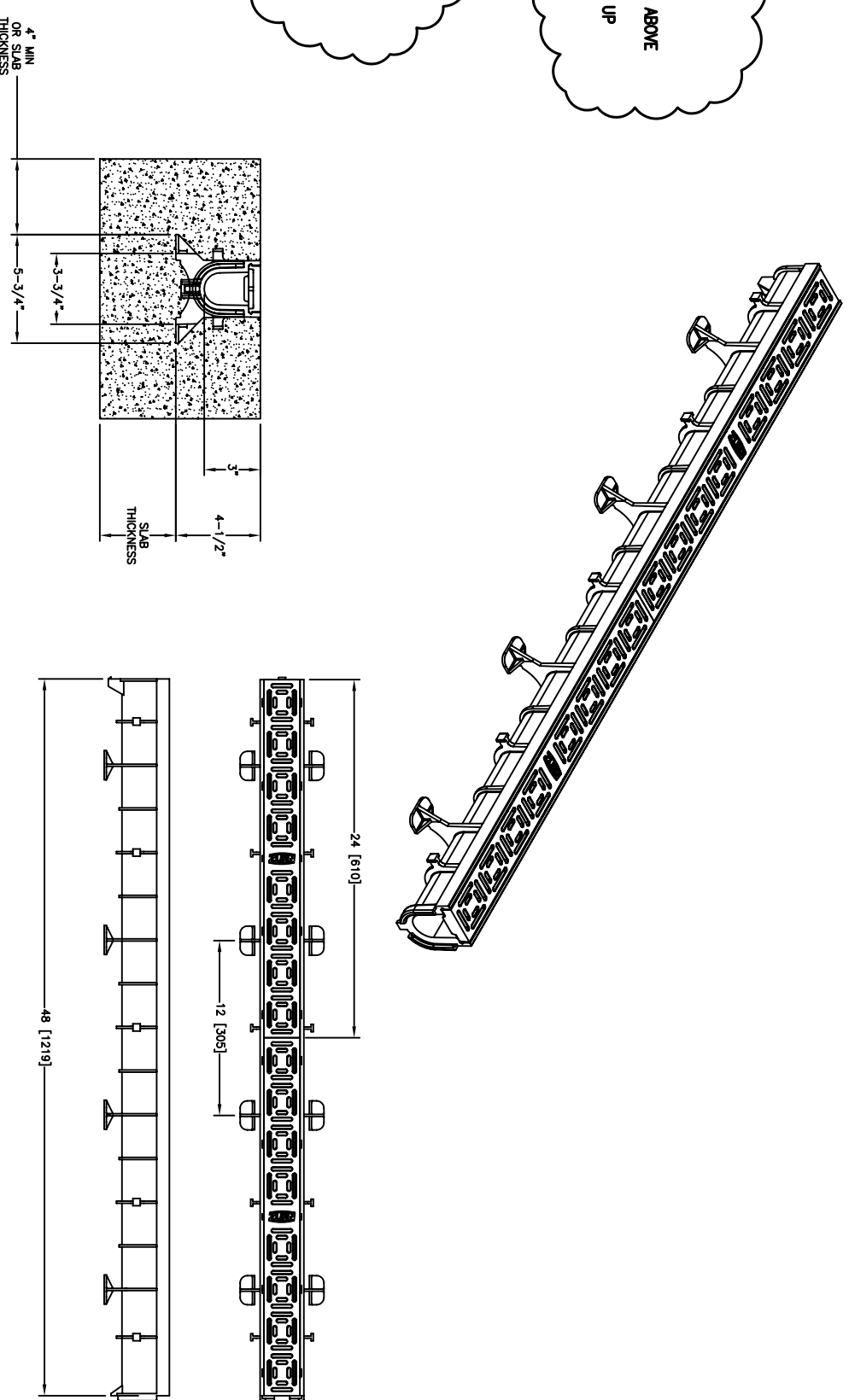


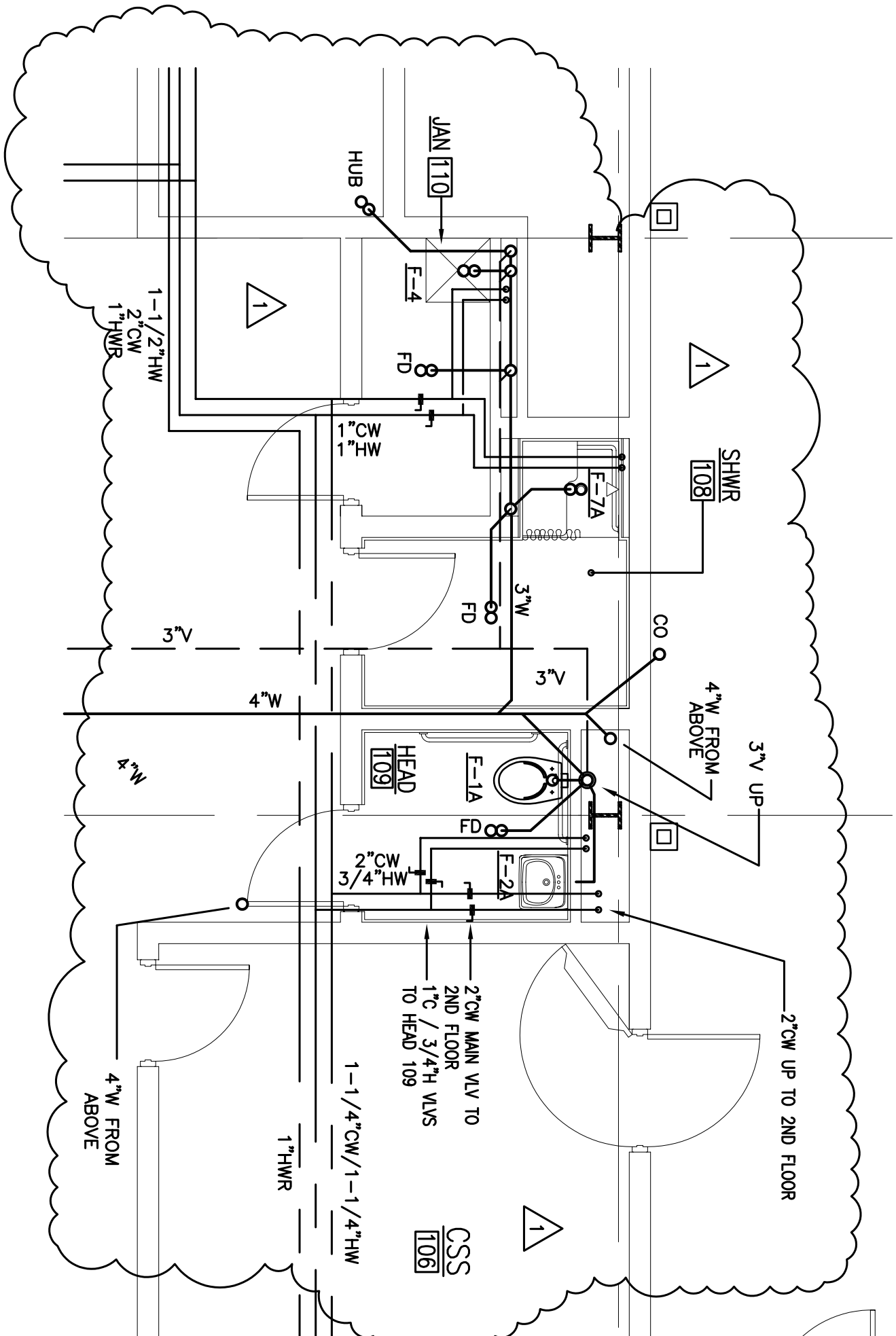
OPERATIONS BUILDING FIRST FLOOR PLUMBING PLAN
SCALE: 3/32" = 1'-0"



SHOWER TRENCH DRAIN INSTALLATION DETAIL
SCALE: NONE



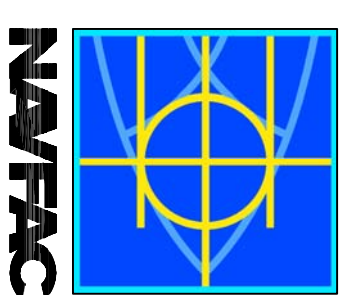
ENLARGED PARTIAL 1ST FLOOR PLUMBING PLAN
SCALE: 1/4" = 1'-0"



ENLARGED PARTIAL 1ST FLOOR PLUMBING PLAN
SCALE: 1/4" = 1'-0"

DAMIEN W. SERAUSKAS, P.E.
PROFESSIONAL ENGINEERING SERVICES
15 CYPRESS POINT LANE NEW ORLEANS, LA 70131
VOICE: (504)866-2600 FAX: (504)218-9490

SYMBOL	DESCRIPTION	DATE	APPROVED
1	RECORD DRAWING	06/10/2010	DWS
	AS-BUILT CONDITIONS SHOWN	06/10/2010	DWS



DAMIEN W. SERAUSKAS, P.E.
ENGINEER
1005 FLORIDA AVENUE
SUITE 100
SLIDELL, LA 70458
(850) 649-3322

REVIEWED BY: R. WILBIE
IN CHARGE: T. AUSTIN
CHIEF ENGINEER: D. DAMON
NAVAL FACILITIES ENGINEERING COMMAND
NAVAL AIR STATION JACKSONVILLE
MISSISSIPPI

DEPARTMENT OF THE NAVY
NAVAL FACILITIES ENGINEERING COMMAND SOUTHEAST
IPT GULF COAST
JOHN C. STENNIS SPACE CENTER
**SOF RIVERINE AND COMBATANT
CRAFT OPERATIONS FACILITY - PRE-FINAL**
1ST FLOOR PLUMBING PLAN AND DETAILS

SCALE: AS SHOWN
DRAWING NO.: P-210
CONTR. CONTROL NO.: N62467-05-D-0096
NAVFAC DRAWING NO.: 15026742
SHEET 95 OF 132
P1.1