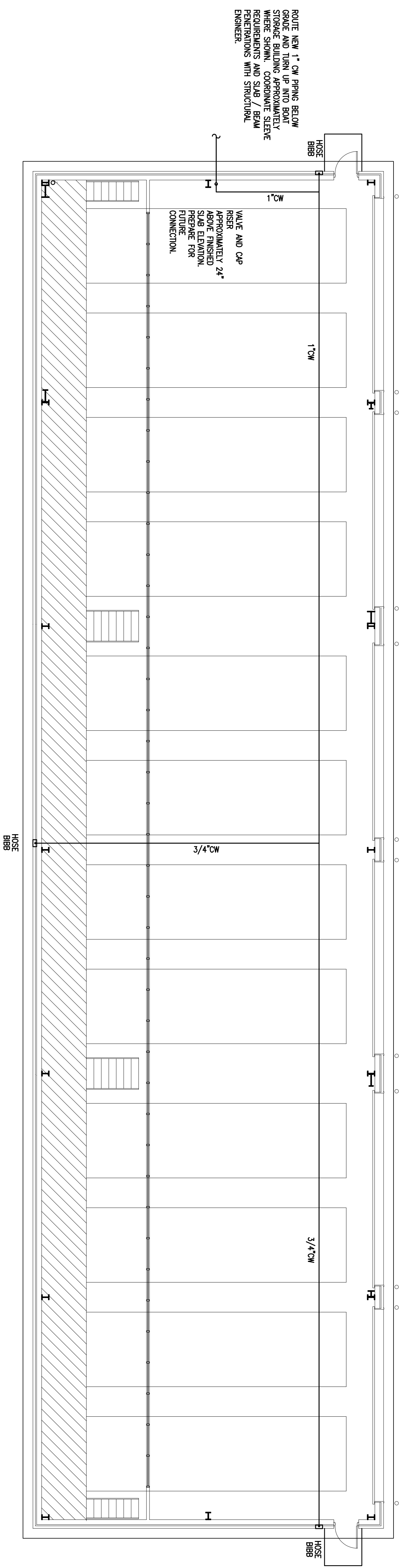


DAMIEN W. SERAUSKAS, P.E.
PROFESSIONAL ENGINEERING SERVICES
 15 CYPRESS POINT LANE NEW ORLEANS, LA 70131
 VOICE: (504)366-2600 FAX: (504)215B480

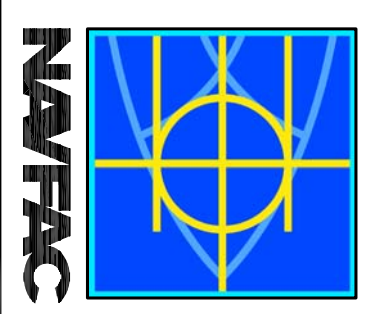


ROUTE NEW 1" CW BRONZ BELOW GRADE AND TURN UP INTO BOAT STORAGE BUILDING APPROXIMATELY WHERE SHOWN. COORDINATE SLEEVE REQUIREMENTS AND SLAB / BEAM PENETRATIONS WITH STRUCTURAL ENGINEER.

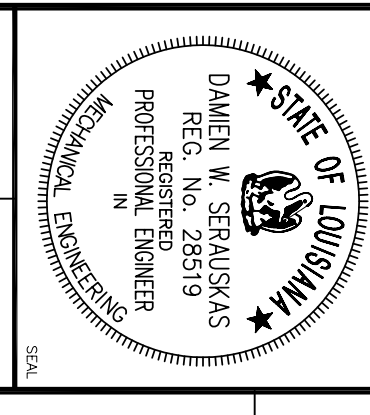
VALVE AND CAP ROSES APPROXIMATELY 24" ABOVE FINISHED SLAB ELEVATION. PREPARE FOR FUTURE CONNECTION.

BOAT STORAGE BUILDING PLUMBING PLAN
 SCALE: 1/8"=1'-0"
 PLAN NORTH

SYM	DESCRIPTION	DATE	APPR



DAMMON
 ENGINEERING, INC.
 ENGINEER, ARCHITECT
 DAMMON, P.E.
 1095 FLORIDA AVENUE
 SUITE 1A 2828
 SHELBY LA 70584
 (989) 978-3838
 MAY 06, 2009



REVIEWED BY: D. SERAUSKAS
 DRAWN BY: T. ARMSTRONG
 CHECKED BY: M. BISHOP
 DEPARTMENT OF THE NAVY
 NAVAL FACILITIES ENGINEERING COMMAND
 NAVAL FACILITIES ENGINEERING COMMAND SOUTHEAST
 NAVAL AIR STATION JACKSONVILLE
 IPT SOUTH ATLANTIC
 MISSISSIPPI
 JOHN C. STENNIS SPACE CENTER
SOF RIVERINE AND COMBATANT CRAFT OPERATIONS FACILITY
BOAT STORAGE BUILDING PLUMBING PLAN

CODE: 10, NO. NA4412 SIZE: D
 SCALE: AS NOTED
 DRAWING NO. #####
 STA. PROJ. NO. #####
 WORK ORDER NO. #####
 CENTER: COCHRAN NO. #####
 CENTER: IN2A(07)-03-D-0096
 NAVFAC DRAWING NO. #####
 SHEET: 01 OF 01
P2.1