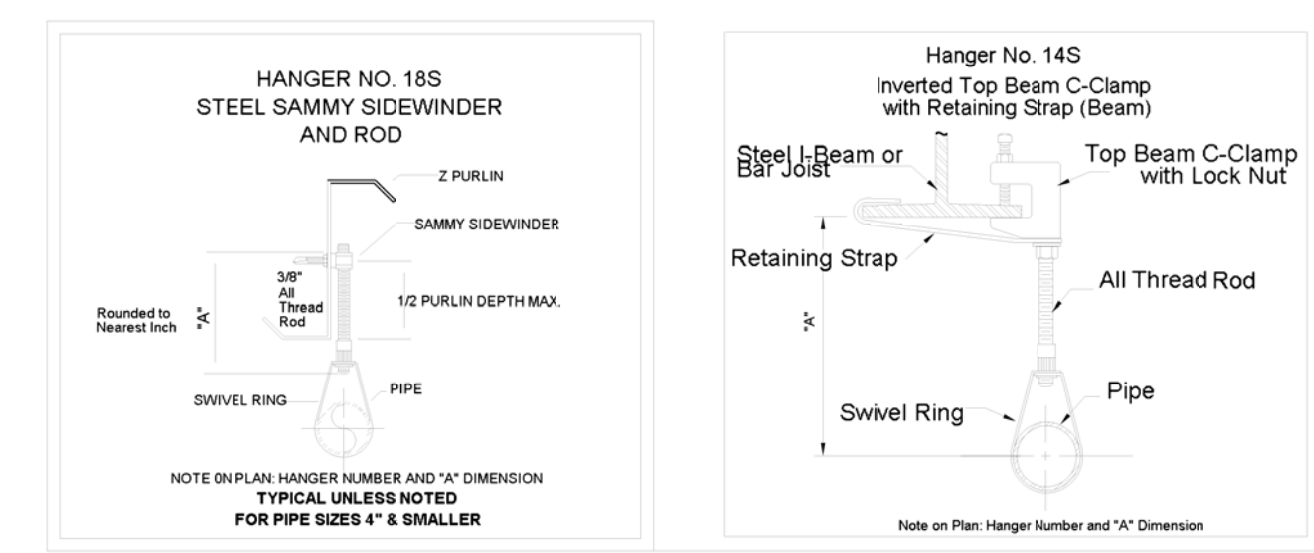
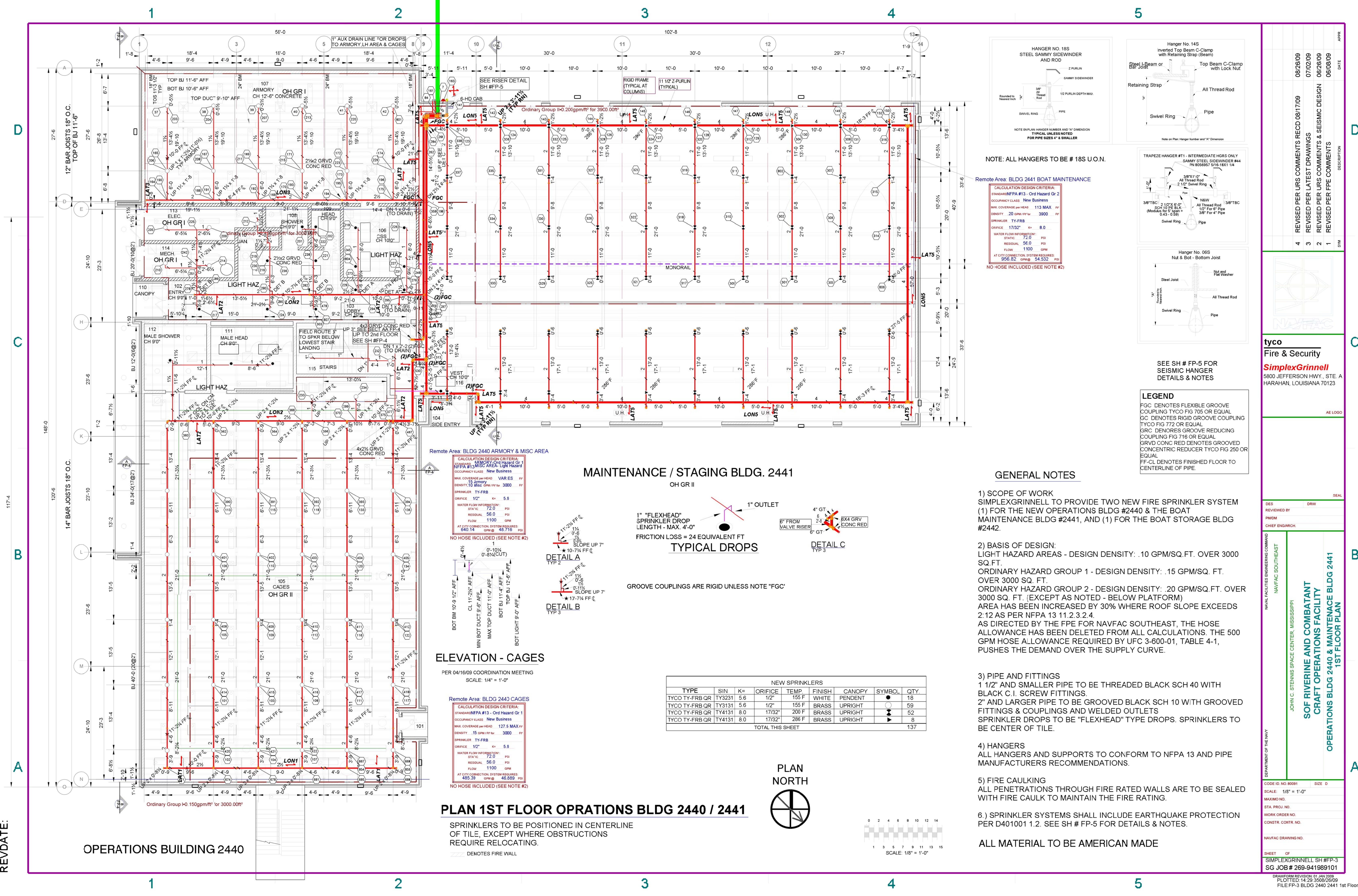


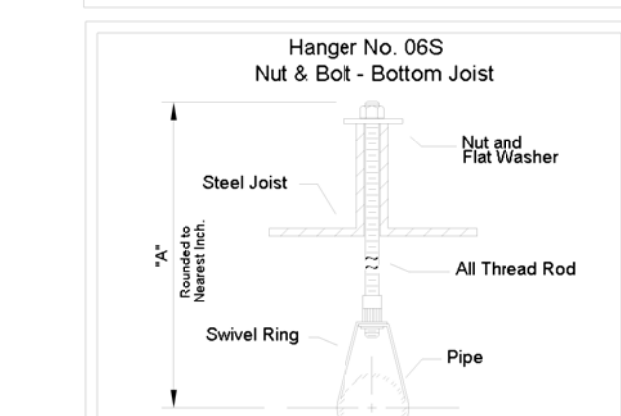
REVDATE:



NOTE: ALL HANGERS TO BE # 18S U.O.N.

Remote Area: BLDG 2441 BOAT MAINTENANCE

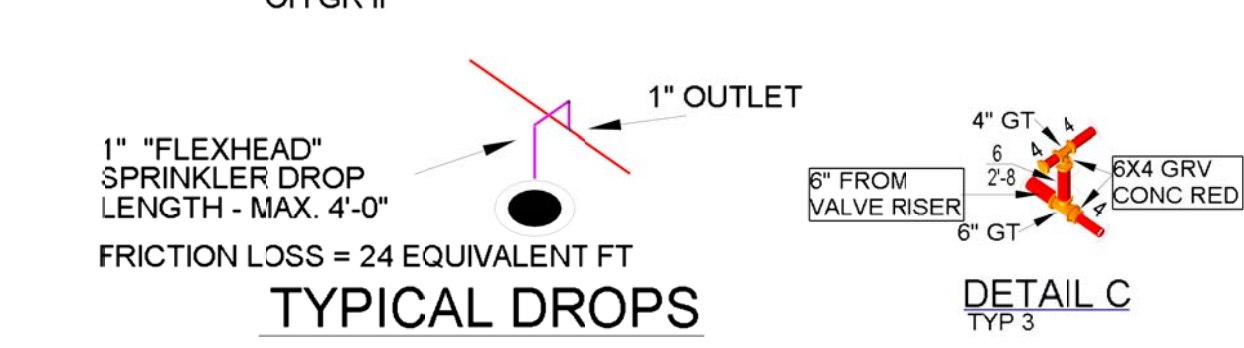
Table with 2 columns: Parameter and Value. Includes occupancy class (New Business), max coverage, density, and flow rate.



SEE SH # FP-5 FOR SEISMIC HANGER DETAILS & NOTES

LEGEND: FGC DENOTES FLEXIBLE GROOVE COUPLING TYCO FIG 705 OR EQUAL, GC DENOTES RIGID GROOVE COUPLING TYCO FIG 772 OR EQUAL, etc.

MAINTENANCE / STAGING BLDG. 2441



GROOVE COUPLINGS ARE RIGID UNLESS NOTE "FGC"

ELEVATION - CAGES

PER 04/16/09 COORDINATION MEETING SCALE: 1/4" = 1'-0"

Table for Remote Area: BLDG 2440 CAGES with calculation design criteria and water flow information.

Table for NEW SPRINKLERS with columns for Type, SIN, K, Orifice, Temp, Finish, Canopy, Symbol, and Qty.



PLAN 1ST FLOOR OPERATIONS BLDG 2440 / 2441

SPRINKLERS TO BE POSITIONED IN CENTERLINE OF TILE, EXCEPT WHERE OBSTRUCTIONS REQUIRE RELOCATING.

--- DENOTES FIRE WALL

GENERAL NOTES

- 1) SCOPE OF WORK: SIMPLEXGRINNELL TO PROVIDE TWO NEW FIRE SPRINKLER SYSTEMS...
2) BASIS OF DESIGN: LIGHT HAZARD AREAS - DESIGN DENSITY: .10 GPM/SQ.FT. OVER 3000 SQ.FT.
3) PIPE AND FITTINGS: 1 1/2" AND SMALLER PIPE TO BE THREADED BLACK SCH 40 WITH BLACK C.I. SCREW FITTINGS.
4) HANGERS: ALL HANGERS AND SUPPORTS TO CONFORM TO NFPA 13 AND PIPE MANUFACTURERS RECOMMENDATIONS.
5) FIRE CAULKING: ALL PENETRATIONS THROUGH FIRE RATED WALLS ARE TO BE SEALED WITH FIRE CAULK TO MAINTAIN THE FIRE RATING.
6.) SPRINKLER SYSTEMS SHALL INCLUDE EARTHQUAKE PROTECTION PER D401001 1.2. SEE SH # FP-5 FOR DETAILS & NOTES.

Project information including title 'OPERATIONS BLDG 2440 & MAINTENANCE BLDG 2441 1ST FLOOR PLAN', revision table, client 'tyco Fire & Security', and drawing details.