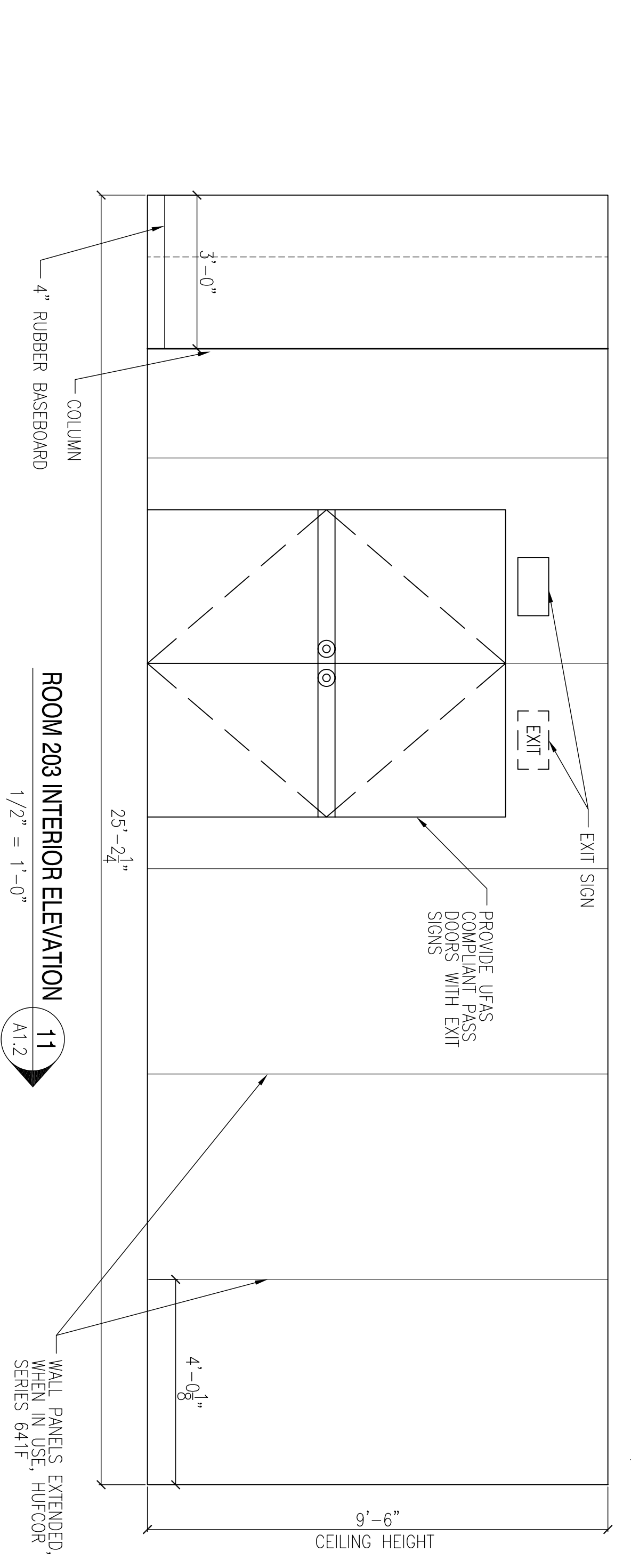
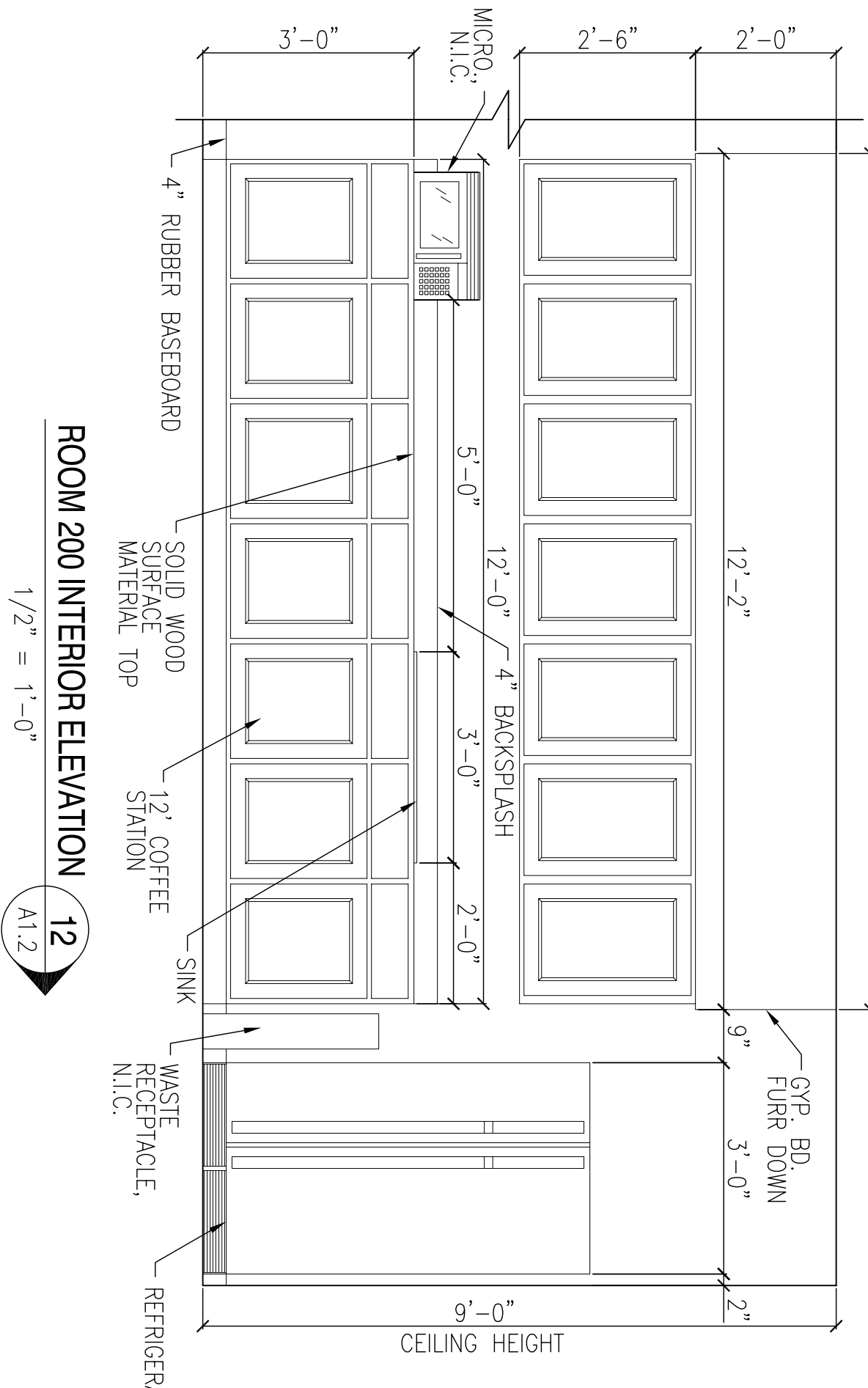


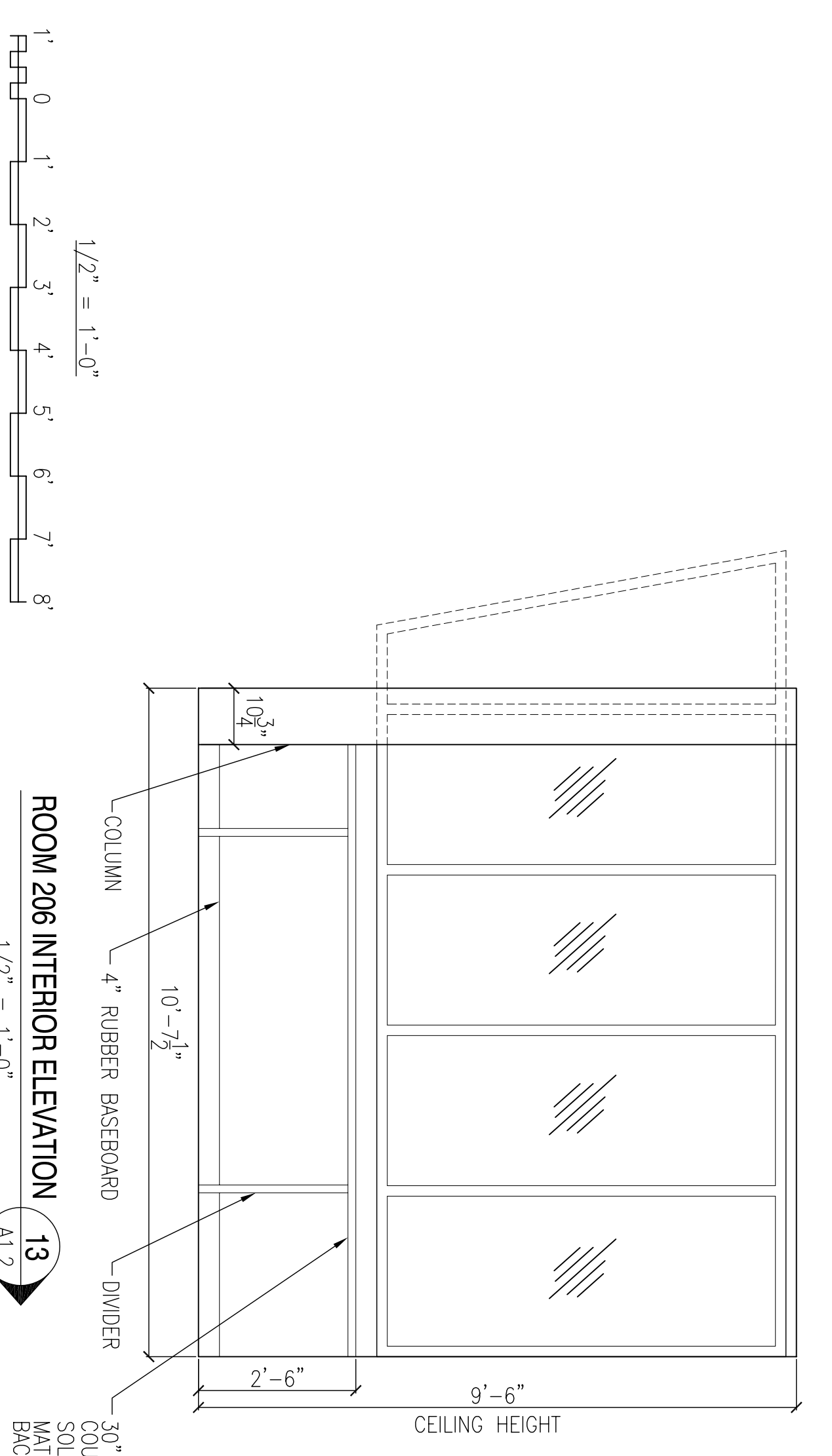
BLDG 2441 INTERIOR ELEVATION 10
 1/2" = 1'-0"
 A1.1



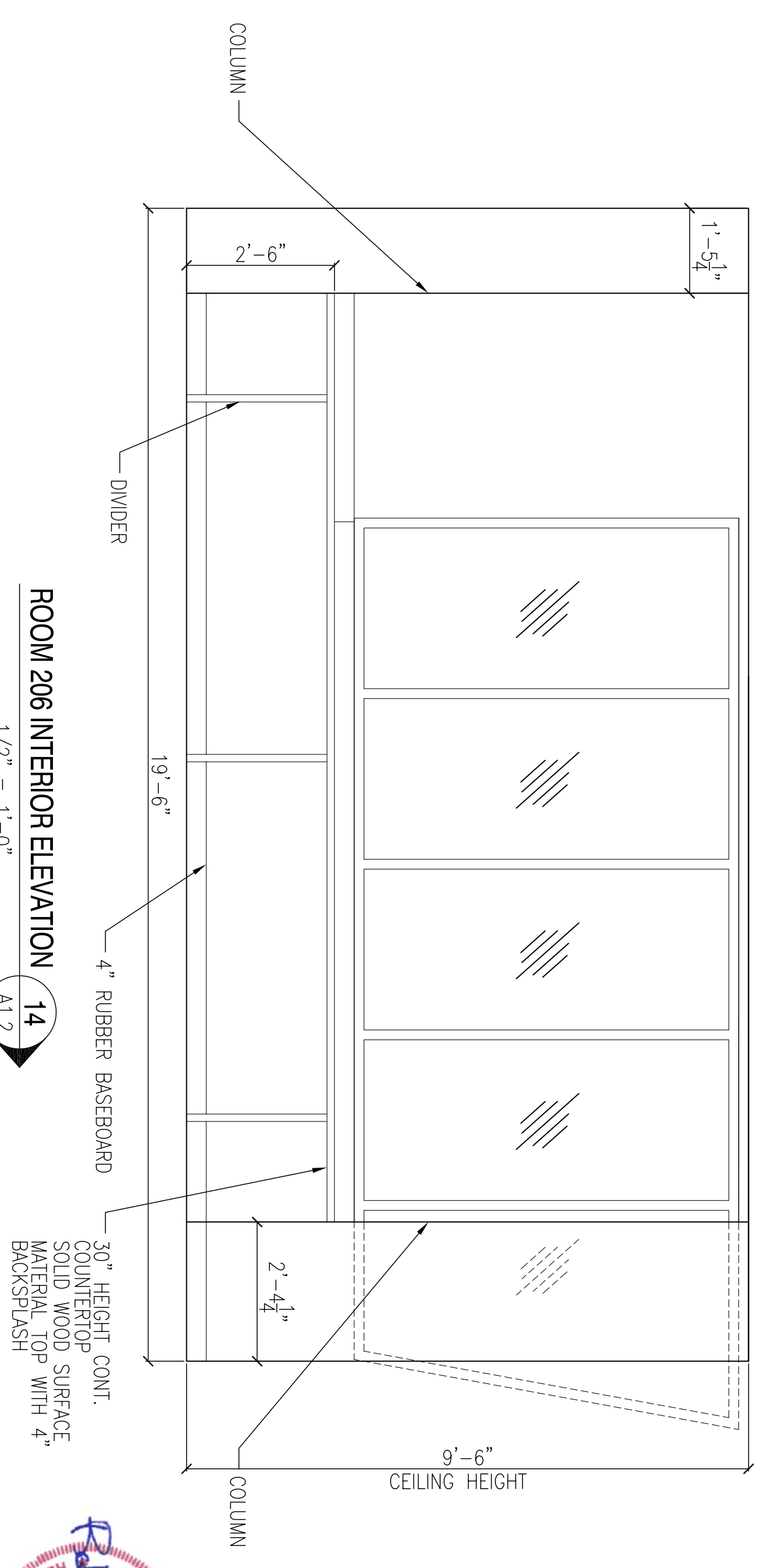
ROOM 203 INTERIOR ELEVATION 11
 1/2" = 1'-0"
 A1.2



ROOM 200 INTERIOR ELEVATION 12
 1/2" = 1'-0"
 A1.2



ROOM 206 INTERIOR ELEVATION 13
 1/2" = 1'-0"
 A1.2



ROOM 206 INTERIOR ELEVATION 14
 1/2" = 1'-0"
 A1.2



DEPARTMENT OF THE NAVY NAVAL FACILITIES ENGINEERING COMMAND NAVAL AIR STATION JACKSONVILLE JOHN C. STENNIS SPACE CENTER MISSISSIPPI SOF RIVERINE AND COMBATANT CRAFT OPERATIONS FACILITY - PRE-FINAL BLDG. 2440/2441 INTERIOR ELEVATIONS		DAMMON ENGINEERING, INC. ENGINEER 30011 LA 70038 (981) 649-8312 SEPTEMBER 4, 2009		REVISIONS: DESIGNED BY: R. WITSE DRAWN BY: J. MIFANAY CHECKED BY: T. ARBIB IN CHARGE: P. DAMMON		REVISED AS PER URS COMMENTS 9 OCTOBER 2009 11-6-09 RW APRR	
SYMBOL	DESCRIPTION	DATE	APPROVED				

PROJECT LET FILE NO.	11-00000000
STATE OF LOUISIANA REGISTERED PROFESSIONAL ENGINEER	
SCALE	AS SHOWN
WORK ORDER NO.	510247
CONTRACT NO.	N62467-05-0-0096
NAVFAC DRAWING NO.	15006994
DATE	07/09/11