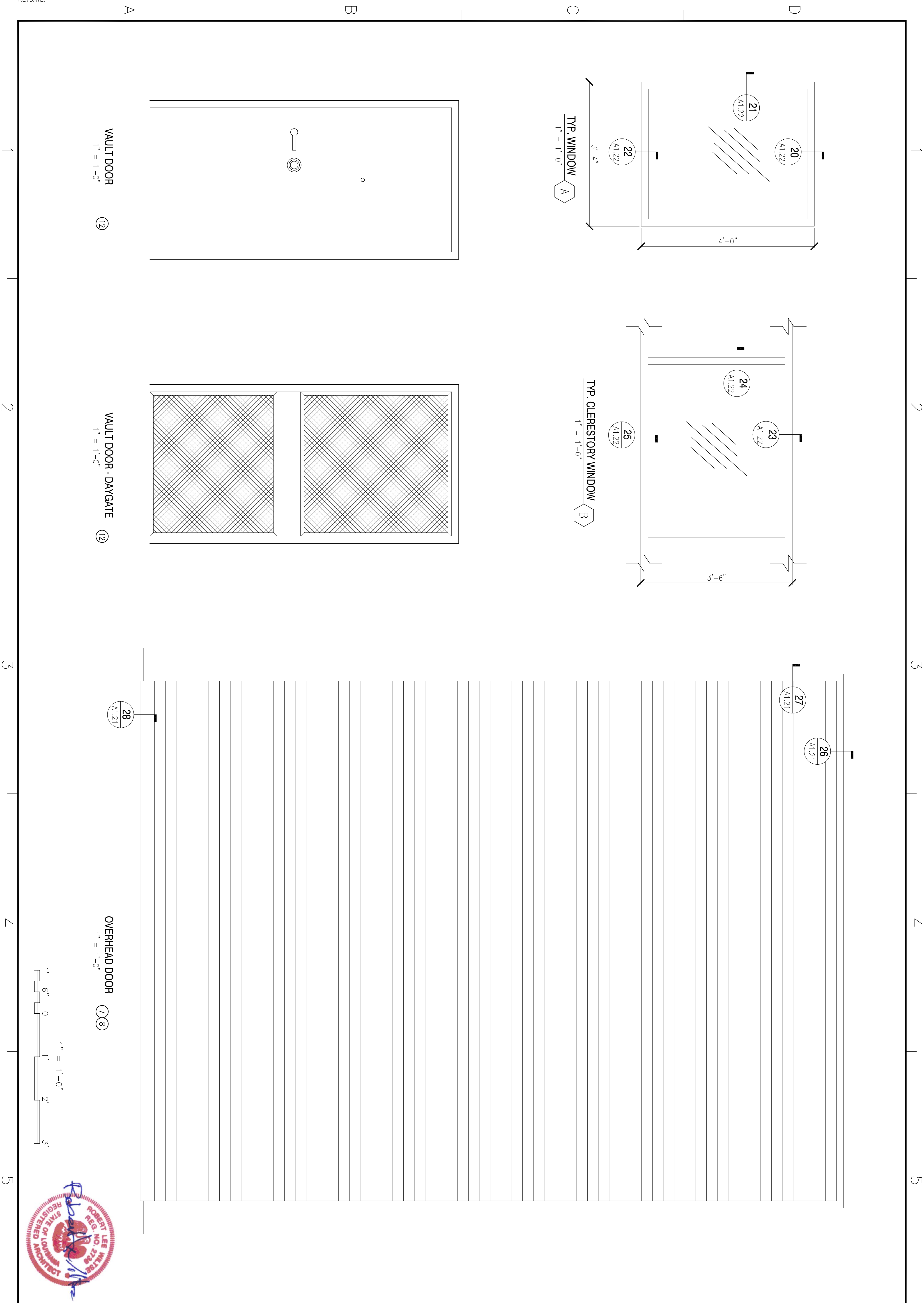


REV/DATE:



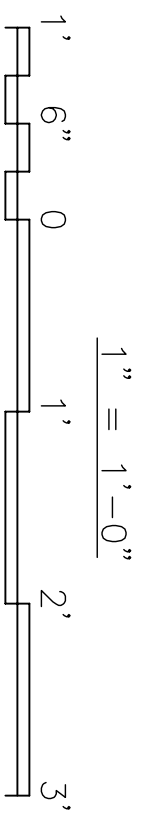
VAULT DOOR (12)  
1" = 1'-0"

VAULT DOOR - DAYGATE (12)  
1" = 1'-0"

TYP. WINDOW (A)  
1" = 1'-0"

TYP. CLERESTORY WINDOW (B)  
1" = 1'-0"

OVERHEAD DOOR (7, 8)  
1" = 1'-0"

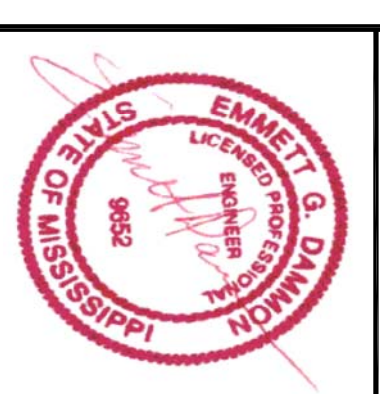


NAVFAC PERSUNING NO. 15026966  
CONSTR. CONTR. NO. N62467-05-0-0096  
STA. PROJ. NO. P-2110  
SCALE: AS SHOWN  
CODE ID. NO. N4412 SIZE: 0

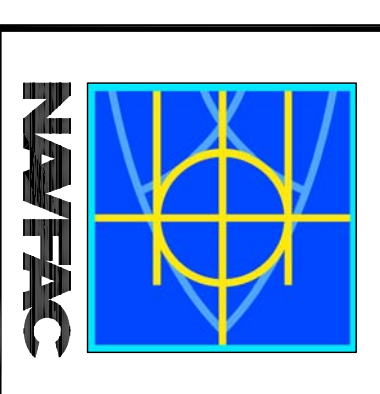


DEPARTMENT OF THE NAVY  
NAVAL FACILITIES ENGINEERING COMMAND SOUTHEAST  
IPT GULF COAST  
JOHN C. STENNIS SPACE CENTER MISSISSIPPI  
SOF RIVERINE AND COMBATANT CRAFT OPERATIONS FACILITY - PRE-FINAL  
BLDG. 2440/2441 DOOR/WINDOW ELEVATIONS

DESIGNED BY: R. WILTSE  
DRAWN BY: J. MIFANAV  
CHECKED BY: T. ARBIB  
IN CHARGE: P. DAMMON



DAMMON ENGINEERING, INC.  
1000 W. UNIVERSITY BLVD.  
SUITE 200  
DAMMON, LA 70601  
(985) 649-5812  
ESTABLISHED 1978



SYM	DESCRIPTION	DATE	APPR
	REVISED AS PER URS COMMENTS 9 OCTOBER 2009	11-6-09	RW