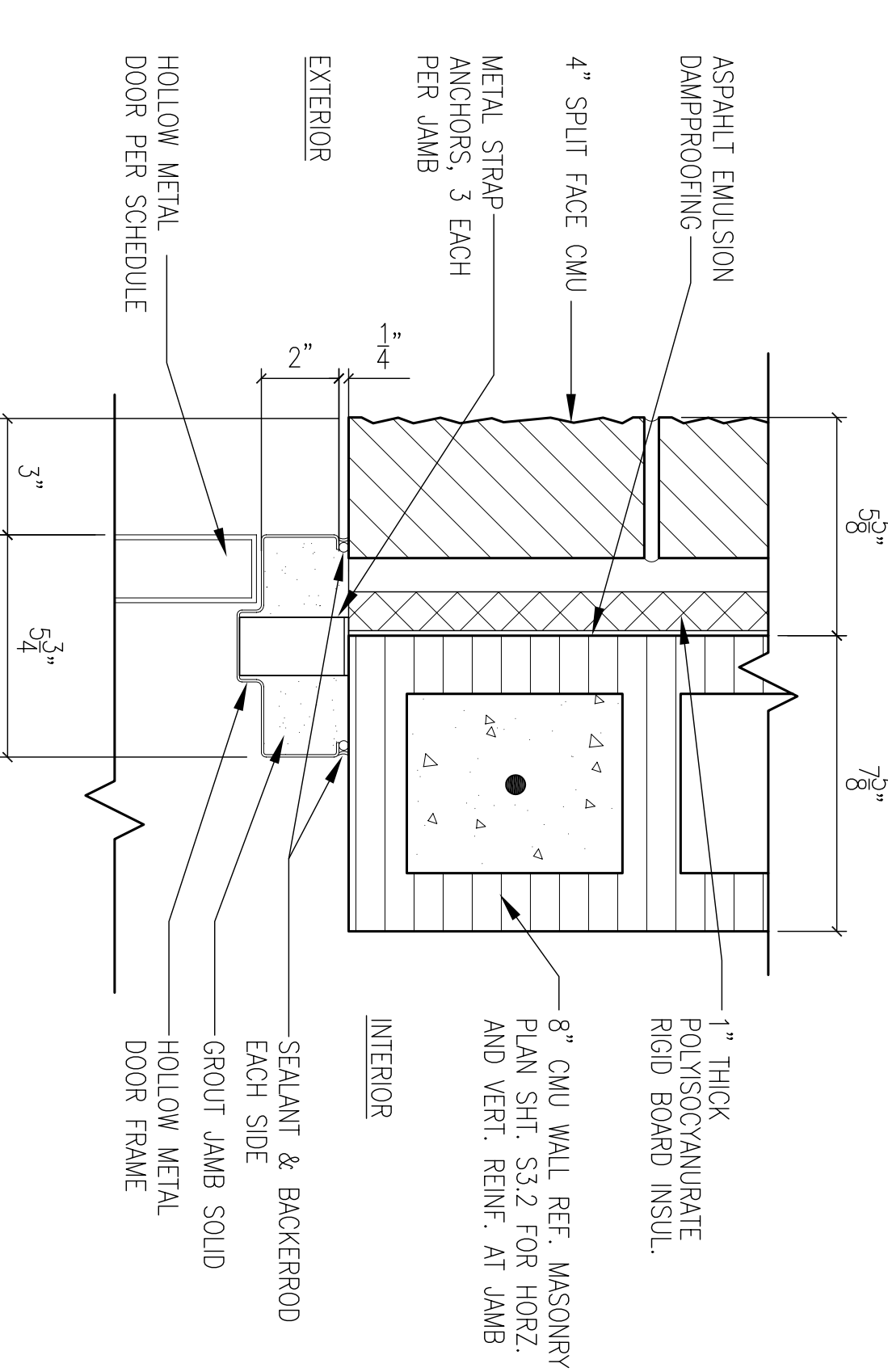
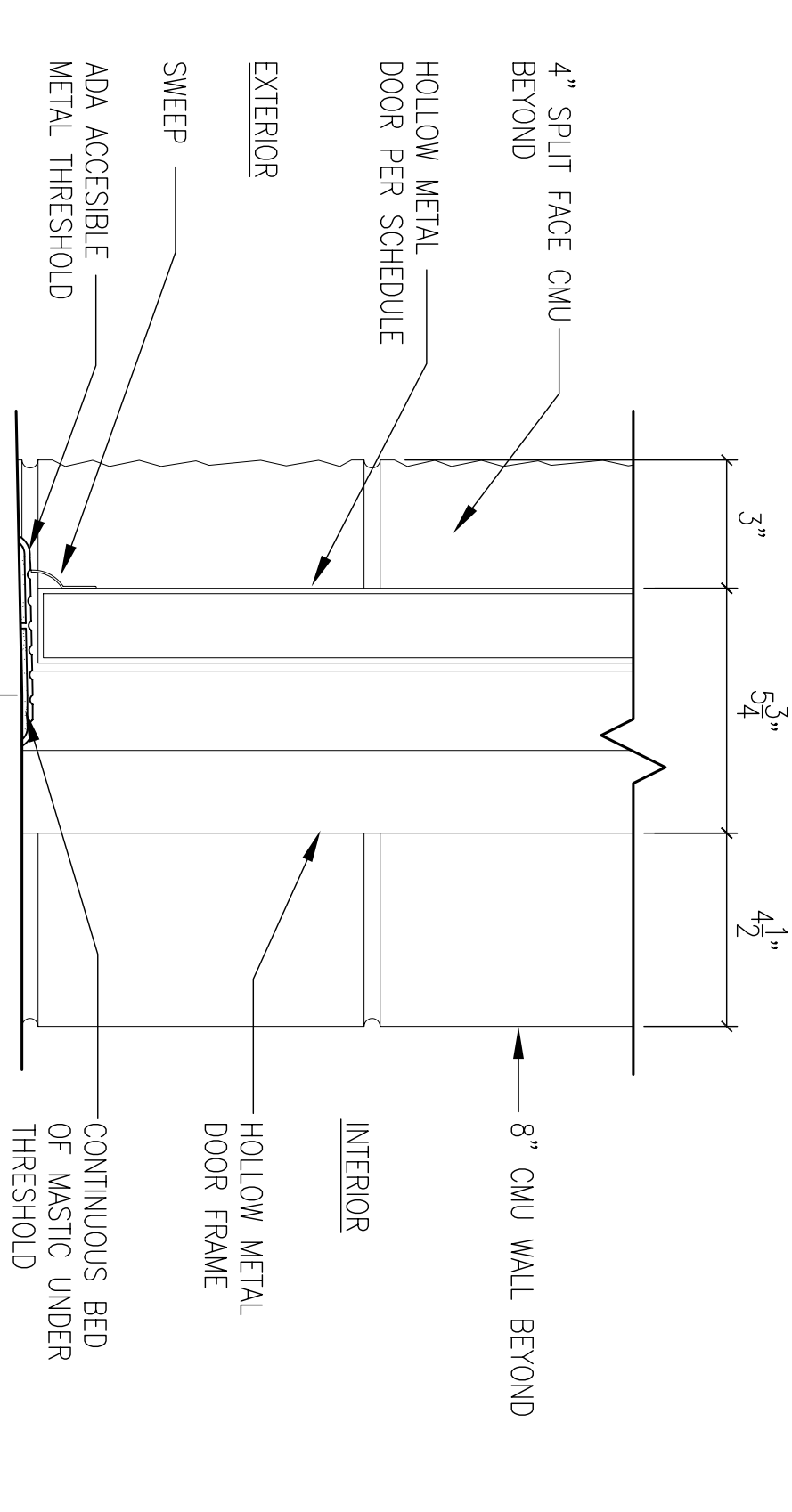


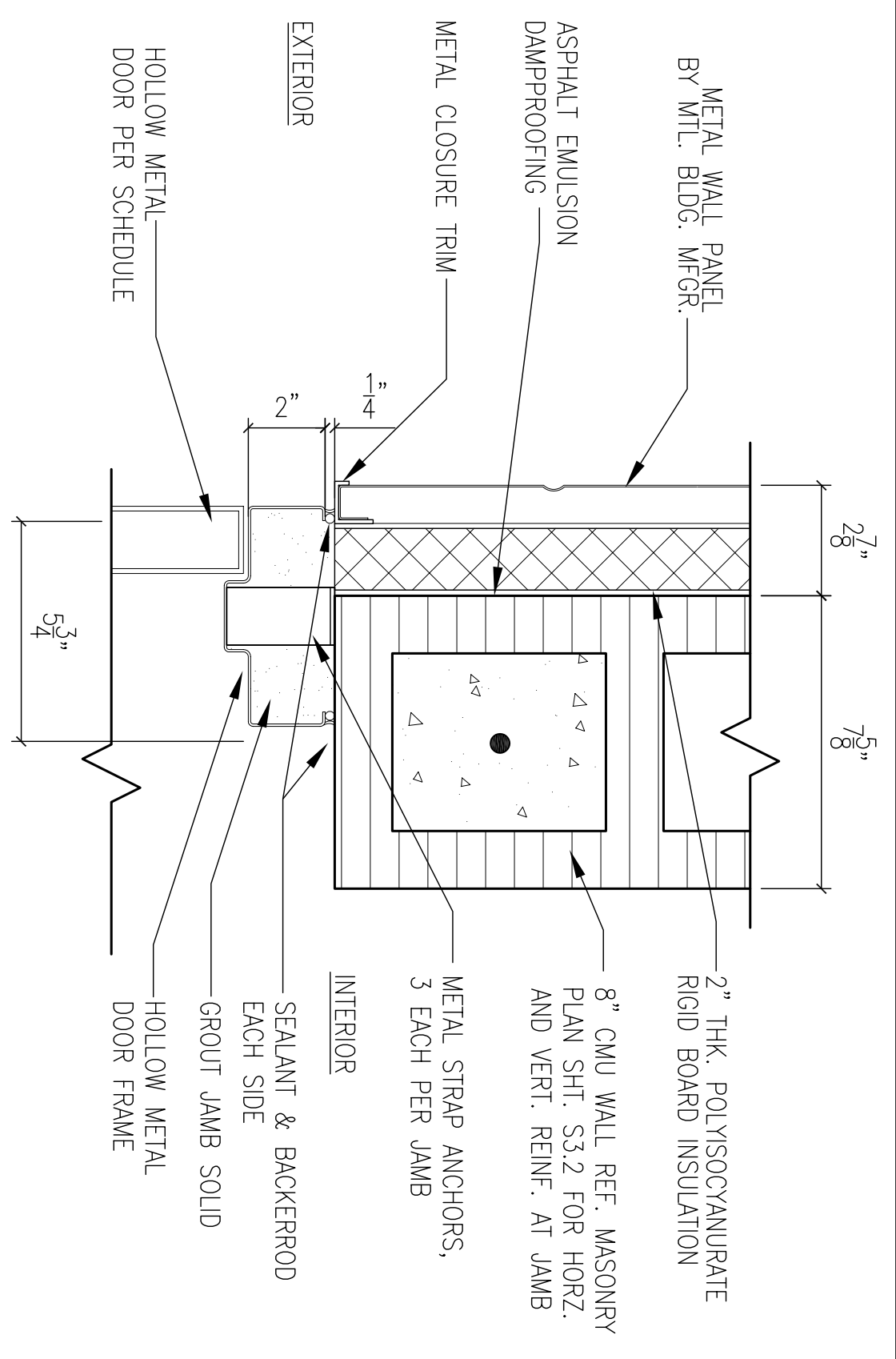
12
1ST FLOOR-HOLLOW METAL
EXTERIOR DOOR HEAD DETAIL
SCALE: 3" = 1'-0"
A1.18



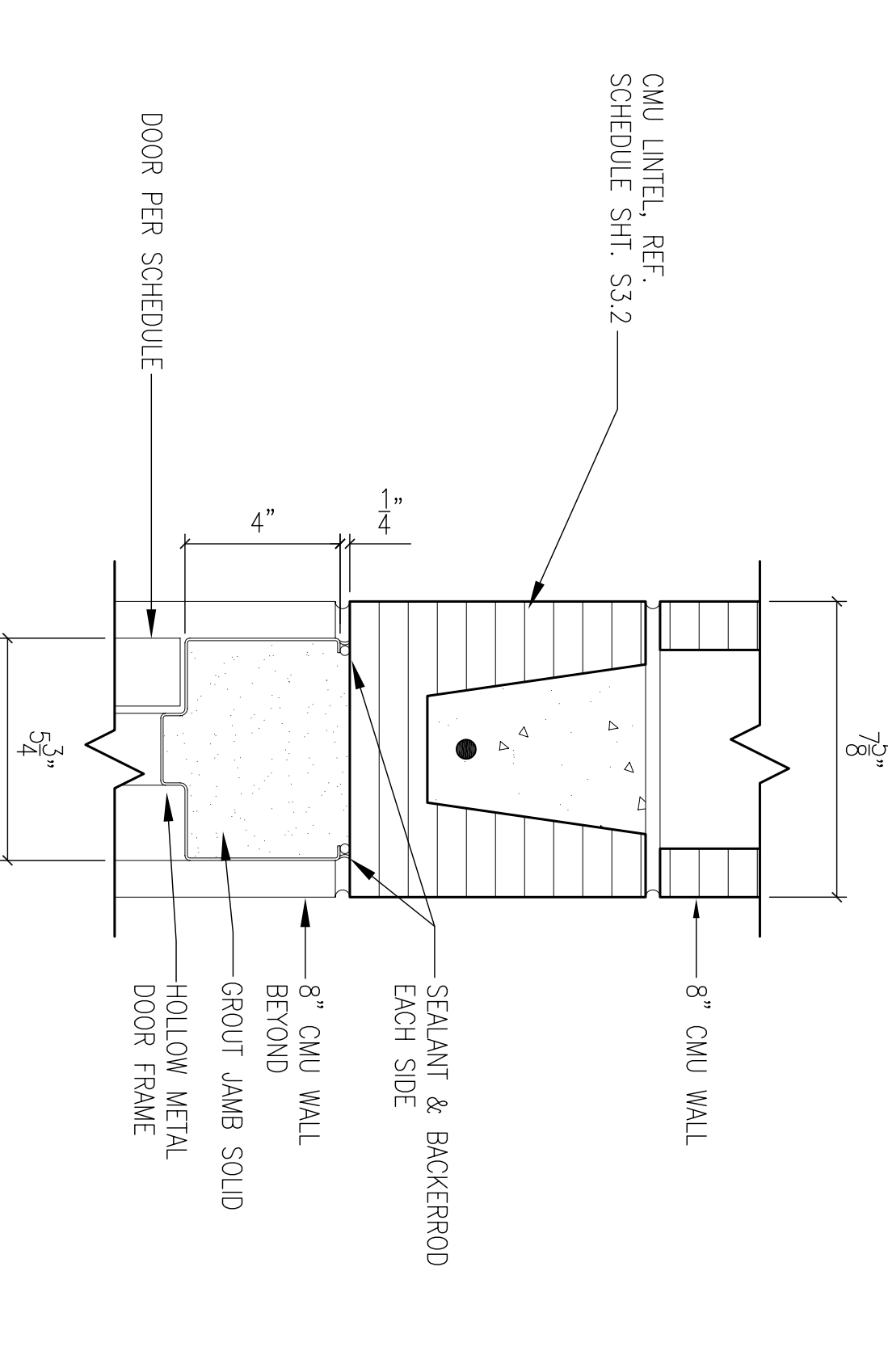
13
1ST FLOOR-HOLLOW METAL
EXTERIOR DOOR JAMB DETAIL
SCALE: 3" = 1'-0"
A1.18



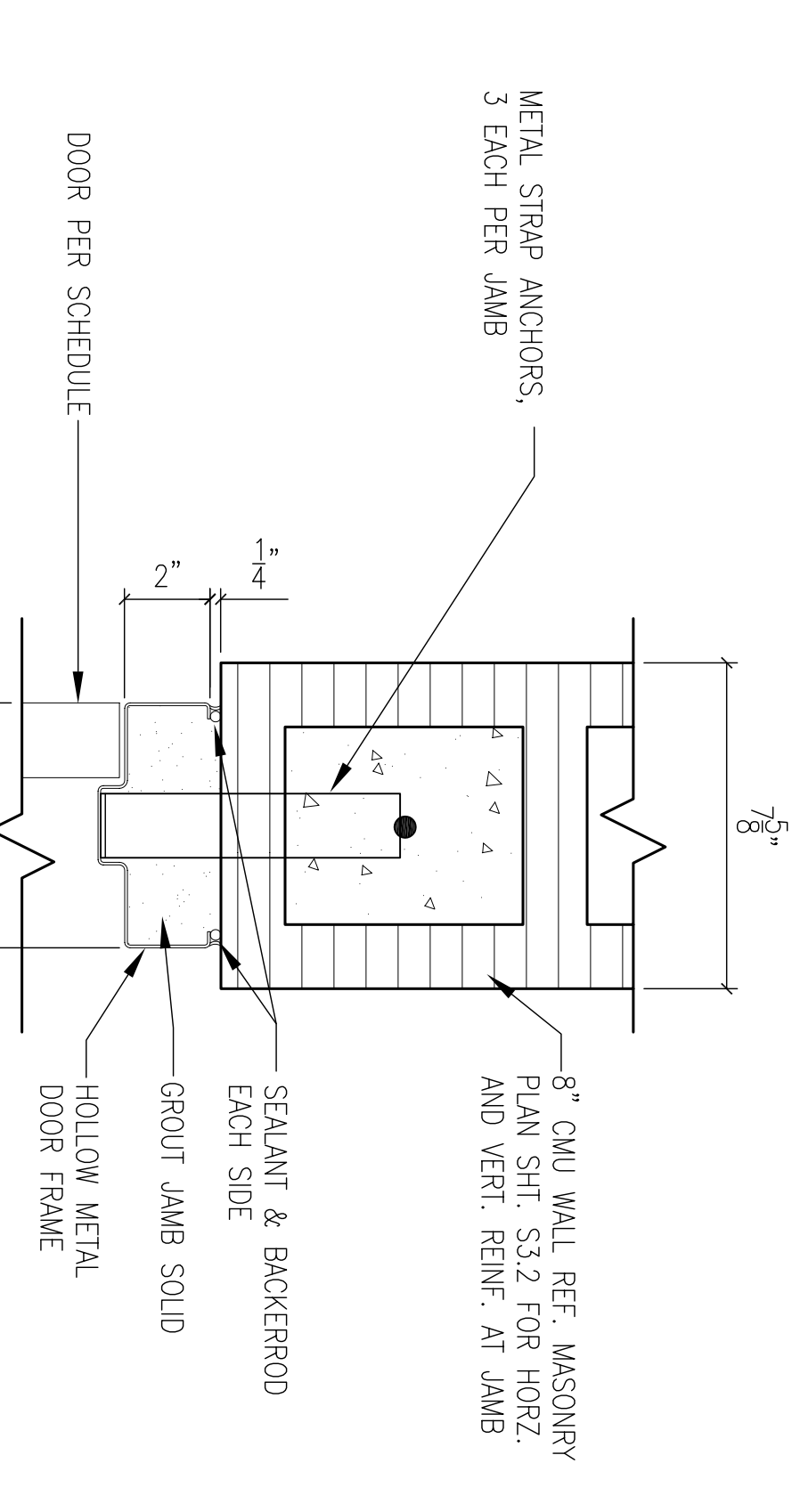
14
1ST FLOOR-HOLLOW METAL
EXTERIOR DOOR SILL DETAIL
SCALE: 3" = 1'-0"
A1.18



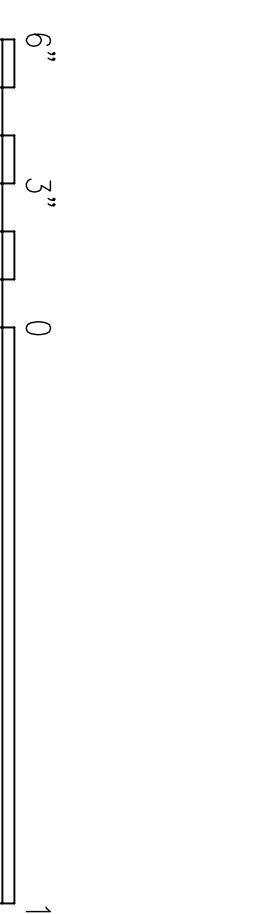
17
2ND FLOOR-HOLLOW METAL
EXTERIOR DOOR JAMB DETAIL
SCALE: 3" = 1'-0"
A1.18



15
1ST FLOOR-HOLLOW METAL
INTERIOR DOOR HEAD DETAIL
SCALE: 3" = 1'-0"
A1.18



16
1ST FLOOR-HOLLOW METAL
INTERIOR DOOR JAMB DETAIL
SCALE: 3" = 1'-0"
A1.18



			<p>RES: R. WATSE DRAW: J. MIFANAY REVIEWED BY: R. WATSE P/LINK: T. JARRETT CHIEF ENGINEER: P. DAMMON</p>	<p>DEPARTMENT OF THE NAVY NAVAL FACILITIES ENGINEERING COMMAND NAVAL AIR STATION JACKSONVILLE MISSISSIPPI</p>	<p>JOHN C. STENNIS SPACE CENTER MISSISSIPPI SOF RIVERINE AND COMBATANT CRAFT OPERATIONS FACILITY - PRE-FINAL BLDG. 2440/2441 DOOR DETAILS</p>	<p>NAVFAC DESIGN NO. 15026932 CONSTR. CONTR. NO. N62467-05-0-0096 STA. PROJ. NO. P-210 WORK ORDER NO. 510247 SCALE: AS SHOWN CODE ID. NO. N4412 SIZE: 0 SHEET: 50 OF 132</p>	<p>DATE: 01 JAN 2009 DRAWING REVISION: 01 JAN 2009 A1.20</p>
--	--	--	--	--	--	--	---