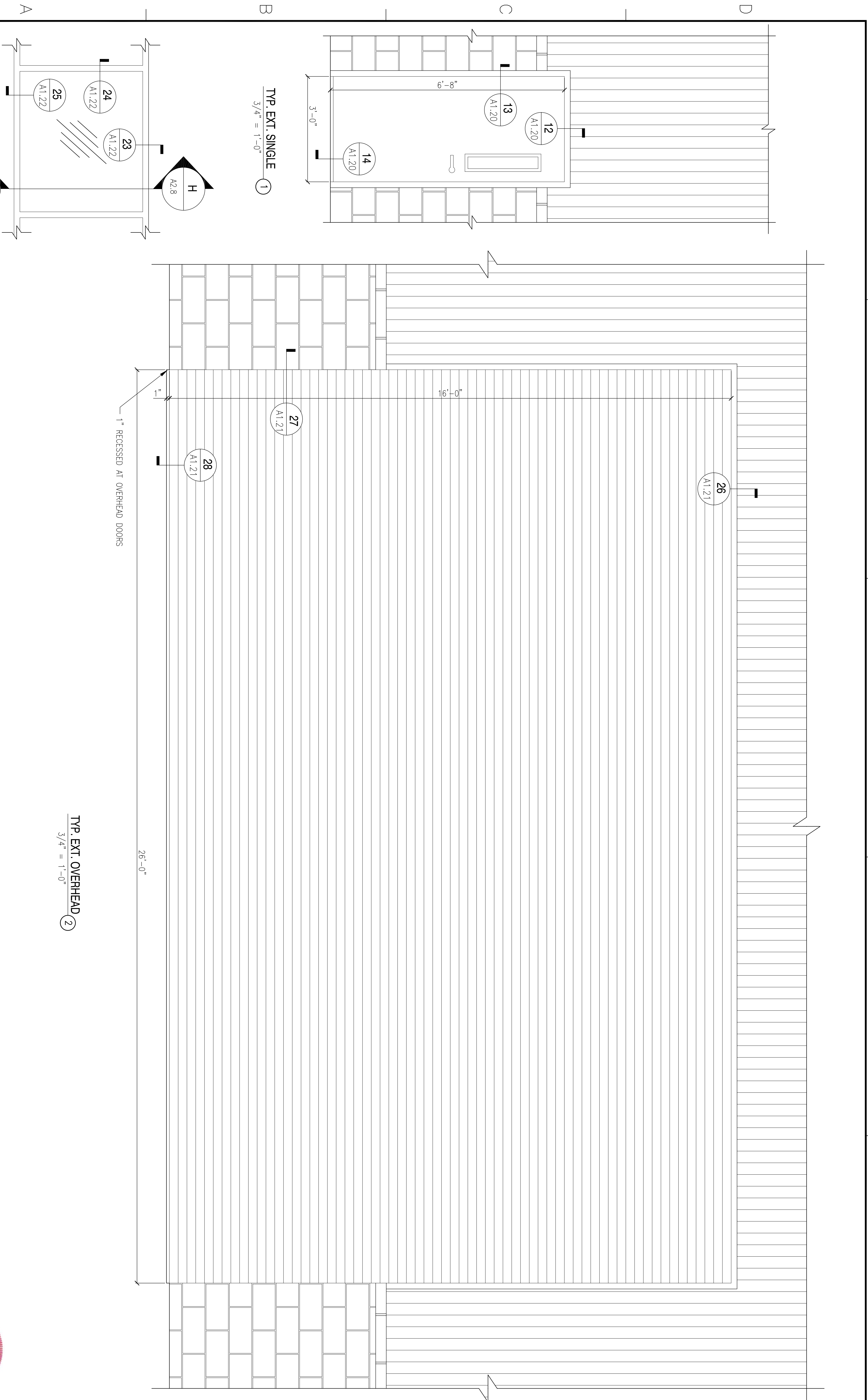


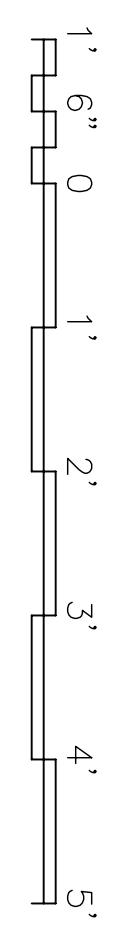
REVDATE:



TYP. EXT. OVERHEAD 2  
3/4" = 1'-0"

TYP. EXT. SINGLE 1  
3/4" = 1'-0"

TYP. CLERESTORY WINDOW A  
3/4" = 1'-0"



DEPARTMENT OF THE NAVY <b>NAVAL FACILITIES ENGINEERING COMMAND SOUTHEAST</b> IPT GULF COAST		NAVAL FACILITIES ENGINEERING COMMAND NAVAL AIR STATION JACKSONVILLE		MISSISSIPPI <b>SOF RIVERINE AND COMBATANT CRAFT OPERATIONS FACILITY - PRE-FINAL</b> <b>BLDG. 2442 DOOR &amp; WINDOW ELEVATIONS</b>	
JOHN C. STENNIS SPACE CENTER		MISSISSIPPI		DAMMON ENGINEERING, INC. ENGINEER CHEF ARCHITECT DAMMON, P. E. ORMA, M.S.E. SMOUL, L.A. F.W.S. (985) 649-5832 <small>ESTABLISHED 4, 2004</small>	
DESIGNED BY: R. WITISE DRAWN BY: J. HERNANDEZ CHECKED BY: T. ARBIB IN CHARGE: P. DAMMON		REGISTERED PROFESSIONAL ENGINEER STATE OF MISSISSIPPI LICENSE NO. 9852 EMMETT B. DAMMON		NAVFAC 	
CODE ID: NGS 14412   SIZE: 0 SCALE: AS SHOWN DRAWING NO.: P-210 STA. PROJ. NO.: 510247 WORK ORDER NO.: N62467-05-0-0096 CONSTR. CONTR. NO.: 15026702 NAVFAC DRAWING NO.: 80 OF 132		DEPARTMENT OF THE NAVY NAVAL FACILITIES ENGINEERING COMMAND SOUTHEAST IPT GULF COAST		MISSISSIPPI <b>SOF RIVERINE AND COMBATANT CRAFT OPERATIONS FACILITY - PRE-FINAL</b> <b>BLDG. 2442 DOOR &amp; WINDOW ELEVATIONS</b>	
REVISED AS PER URS COMMENTS 9 OCTOBER 2009		11-6-09		RW	
SYM		DESCRIPTION		DATE	
APPR		DATE		RW	