

REVDATE:

A

B

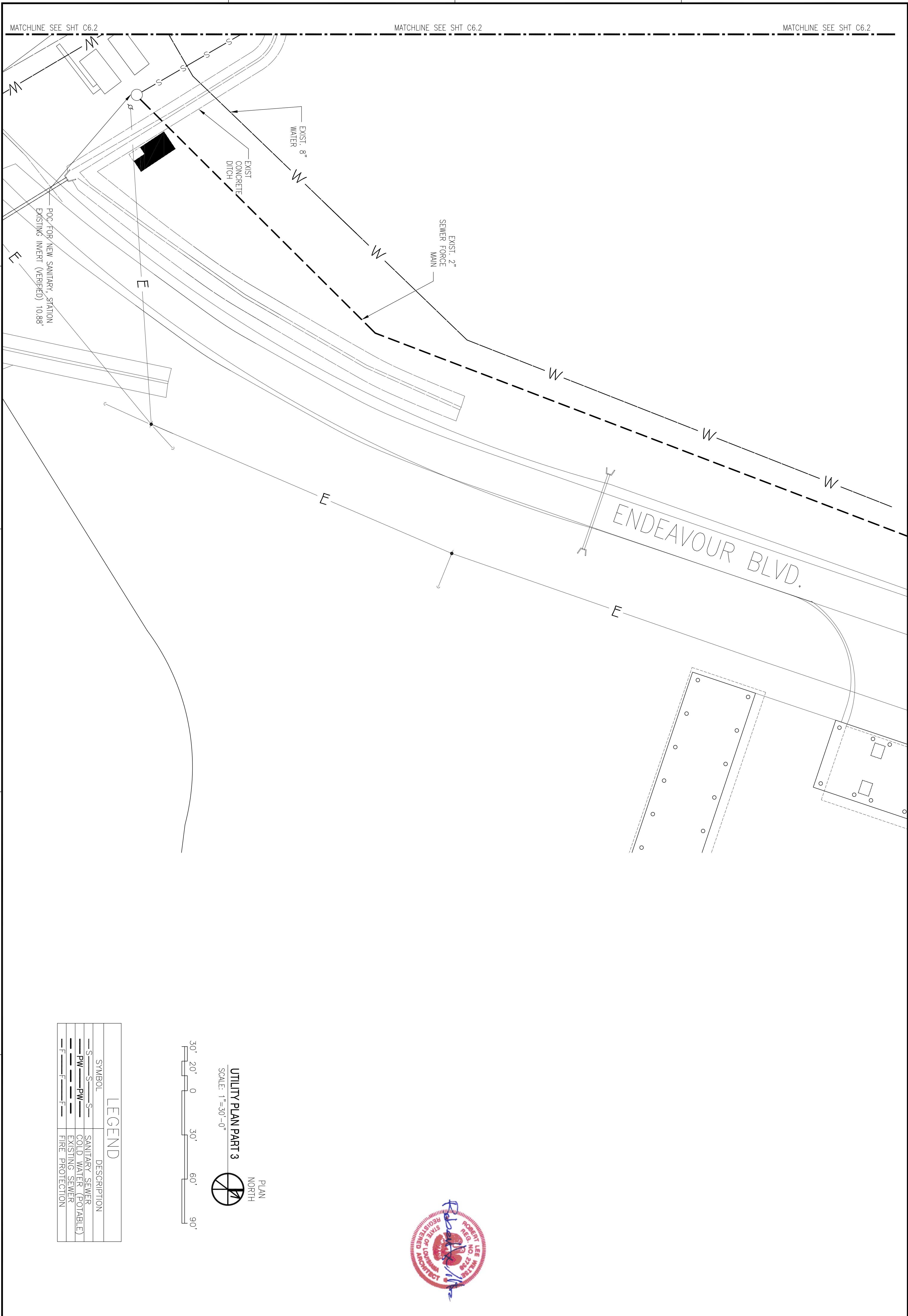
C

D

MATCHLINE SEE SHT C6.2

MATCHLINE SEE SHT C6.2

MATCHLINE SEE SHT C6.2



1

2

3

4

5

1

2

3

4

5

ENDEAVOUR BLVD.

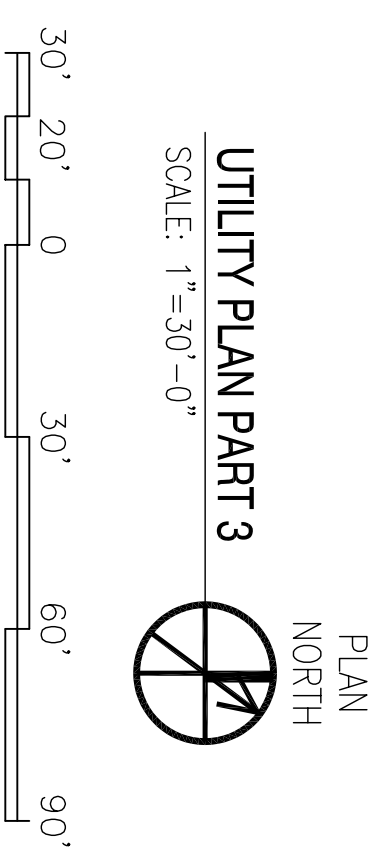
EXIST. 8" WATER

EXIST. 2" SEWER FORCE MAIN

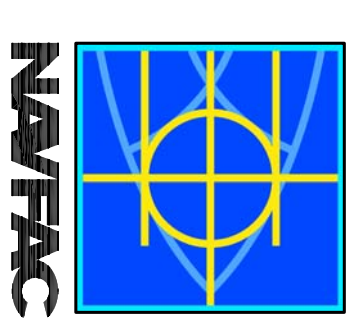
EXIST. CONCRETE DITCH

POC FOR NEW SANITARY STATION EXISTING INVERT (VERIFIED) 10.88'

LEGEND	
SYMBOL	DESCRIPTION
	SANITARY SEWER
	COLD WATER (POTABLE)
	EXISTING SEWER
	FIRE PROTECTION



DAMMON ENGINEERING, INC.
 ENGINEERING, ARCHITECTURE, INTERIOR DESIGN, PLUMBING, MECHANICAL, ELECTRICAL, AND CONSTRUCTION MANAGEMENT
 10000 W. GULF SHORE BLVD., SUITE 100
 JACKSONVILLE, MISSISSIPPI 39202
 (601) 649-5812
 ESTABLISHED 1978



DEPARTMENT OF THE NAVY NAVAL FACILITIES ENGINEERING COMMAND NAVAL AIR STATION JACKSONVILLE	NAVAL FACILITIES ENGINEERING COMMAND NAVAL AIR STATION JACKSONVILLE
JOHN C. STENNIS SPACE CENTER MISSISSIPPI	MISSISSIPPI
SOF RIVERINE AND COMBATANT CRAFT OPERATIONS FACILITY - PRE-FINAL	
UTILITY PLAN PART 3	
DESIGNED BY: R. WILSON DRAWN BY: J. THORNTON CHECKED BY: T. ARBIB IN CHARGE: P. DAMMON	RES. C. DAMMON DES. J. THORNTON PROJ. MGR. T. ARBIB IN CHARGE P. DAMMON 10000 W. GULF SHORE BLVD., SUITE 100 JACKSONVILLE, MISSISSIPPI 39202 (601) 649-5812 ESTABLISHED 1978
DATE: 28 OCT 13	NAVFAC DRAWING NO: 150006075

SYM	DESCRIPTION	DATE	APPR