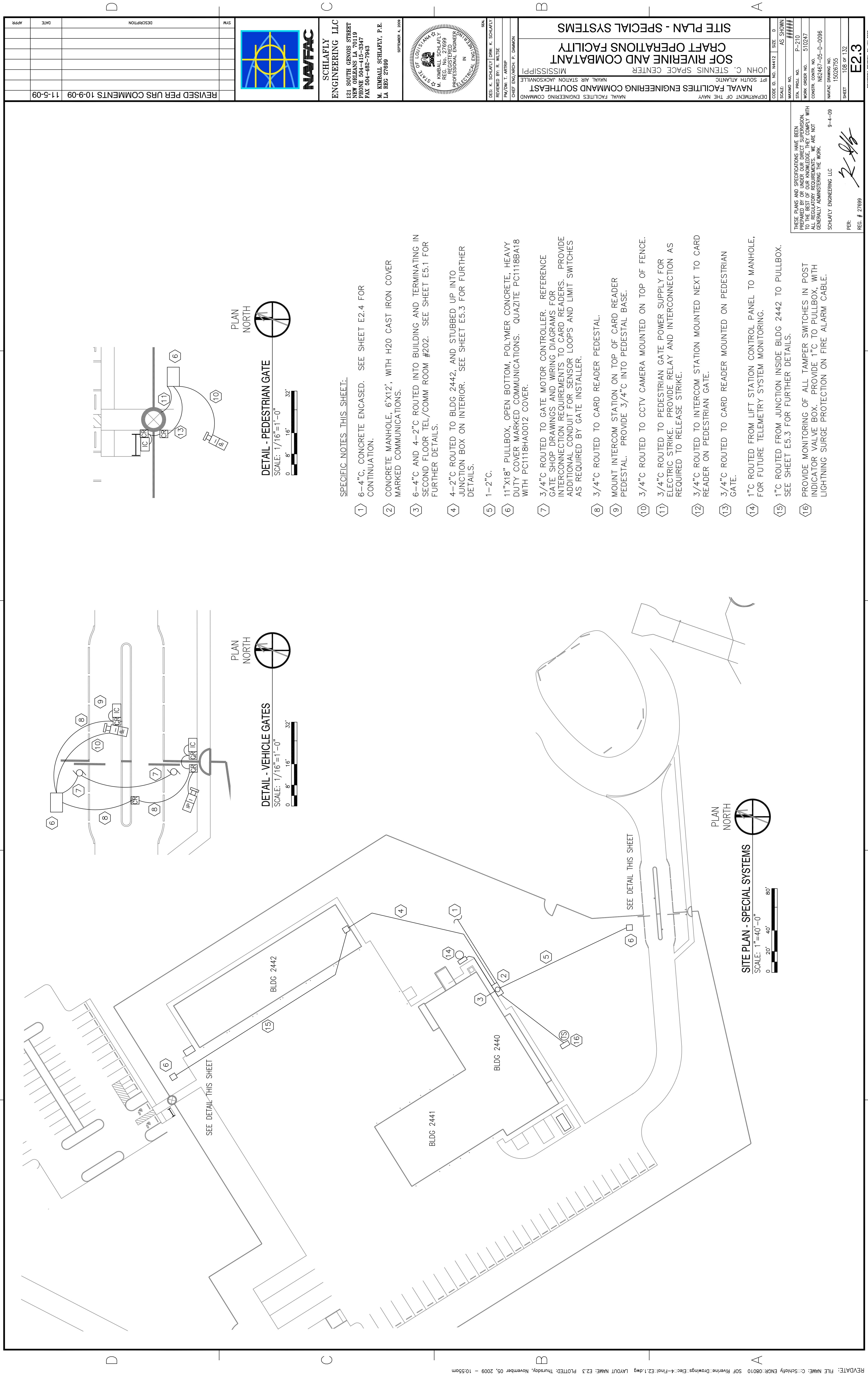
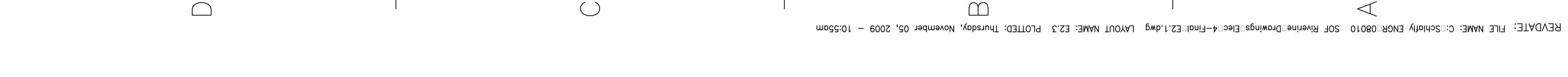


1 2 3 4 5



5



SCHLAFLY ENGINEERING LLC
 121 SOUTH GENOIS STREET
 NEW ORLEANS, LA 70119
 PHONE: 504-482-7947
 FAX: 504-482-7943
M. KIMBALL SCHLAFLY, P.E.
 LA REG 27699

STATE OF LOUISIANA
 PROFESSIONAL ENGINEER
 IN
 ELECTRICAL ENGINEERING
 SPRINGER 4, 2009

NAVAL FACILITIES ENGINEERING COMMAND
 SOUTH EAST
 NAVAL AIR STATION JACKSONVILLE
 MISSISSIPPI
SOFT RIVERINE AND COMBAT CRAFT OPERATIONS AND FACILITY
SITE PLAN - SPECIAL SYSTEMS

DEPARTMENT OF THE NAVY
 NAVAL FACILITIES ENGINEERING COMMAND
 SOUTH EAST
 NAVAL AIR STATION JACKSONVILLE
 MISSISSIPPI
 JOHN C. STENNIS SPACE CENTER
 CRAFT OPERATIONS AND FACILITY
 SITE PLAN - SPECIAL SYSTEMS

REVISIONS:
 DATE: APRR
 DESCRIPTION: REVISED PER URS COMMENTS 10-9-09
 SYN: 11-5-09

CODE ID. NO. N4412 | SIZE: D
 SCALE: AS SHOWN
 MAXIMO NO. #####
 STA. PROJ. NO. P-210
 WORK ORDER NO. 510247
 CONSTR. CONTR. NO. NC2467-05-D-0086
 NAVFAC DRAWING NO. 15026755
 SHEET 105 OF 132
E2.3

PER: *[Signature]*
 REG. # 27699
 9-4-09
 SCHLAFLY ENGINEERING LLC

THESE PLANS AND SPECIFICATIONS HAVE BEEN PREPARED UNDER OUR SUPERVISION. THE BEST OF OUR KNOWLEDGE AND BELIEF THEY COMPLY WITH ALL REGULATORY REQUIREMENTS. WE ARE NOT GENERALLY ADMINISTERING THE WORK.

SPECIFIC NOTES THIS SHEET:
 ① 6-4" C, CONCRETE ENCASED. SEE SHEET E2.4 FOR CONTINUATION.
 ② CONCRETE MANHOLE. 6'X12', WITH H2O CAST IRON COVER MARKED COMMUNICATIONS.
 ③ 6-4" C AND 4-2" C ROUTED INTO BUILDING AND TERMINATING IN SECOND FLOOR TEL/COMM ROOM #202. SEE SHEET E5.1 FOR FURTHER DETAILS.
 ④ 4-2" C ROUTED TO BLDG 2442, AND STUBBED UP INTO JUNCTION BOX ON INTERIOR. SEE SHEET E5.3 FOR FURTHER DETAILS.
 ⑤ 1-2" C.
 ⑥ 11"X18" PULLBOX, OPEN BOTTOM, POLYMER CONCRETE, HEAVY DUTY COVER MARKED COMMUNICATIONS. QUAZITE PC1118BA18 WITH PC1118HA0012 COVER.
 ⑦ 3/4" C ROUTED TO GATE MOTOR CONTROLLER. REFERENCE GATE SHOP DRAWINGS AND WIRING DIAGRAMS FOR INTERCONNECTION REQUIREMENTS TO CARD READERS. PROVIDE ADDITIONAL CONDUIT FOR SENSOR LOOPS AND LIMIT SWITCHES AS REQUIRED BY GATE INSTALLER.
 ⑧ 3/4" C ROUTED TO CARD READER PEDESTAL.
 ⑨ MOUNT INTERCOM STATION ON TOP OF CARD READER PEDESTAL. PROVIDE 3/4" C INTO PEDESTAL BASE.
 ⑩ 3/4" C ROUTED TO CCTV CAMERA MOUNTED ON TOP OF FENCE.
 ⑪ 3/4" C ROUTED TO PEDESTRIAN GATE POWER SUPPLY FOR ELECTRIC STRIKE. PROVIDE RELAY AND INTERCONNECTION AS REQUIRED TO RELEASE STRIKE.
 ⑫ 3/4" C ROUTED TO INTERCOM STATION MOUNTED NEXT TO CARD READER ON PEDESTRIAN GATE.
 ⑬ 3/4" C ROUTED TO CARD READER MOUNTED ON PEDESTRIAN GATE.
 ⑭ 1" C ROUTED FROM LIFT STATION CONTROL PANEL TO MANHOLE, FOR FUTURE TELEMETRY SYSTEM MONITORING.
 ⑮ 1" C ROUTED FROM JUNCTION INSIDE BLDG 2442 TO PULLBOX. SEE SHEET E5.3 FOR FURTHER DETAILS.
 ⑯ PROVIDE MONITORING OF ALL TAMPER SWITCHES IN POST INDICATOR VALVE BOX. PROVIDE 1" C TO PULLBOX, WITH LIGHTNING SURGE PROTECTION ON FIRE ALARM CABLE.

REDATE: FILE NAME: C:\Schlafly\ENR 08010 SOF Riverine Drawings Elec-4\Final\E2.1.dwg LAYOUT NAME: E2.3 PLOTTED: Thursday, November 05, 2009 - 10:55am

REVISION: 01 JAN 2009