

2nd FLR. C.I.G. HGT. 22'-3"

2nd FLR. I.O.S. 12'-9"

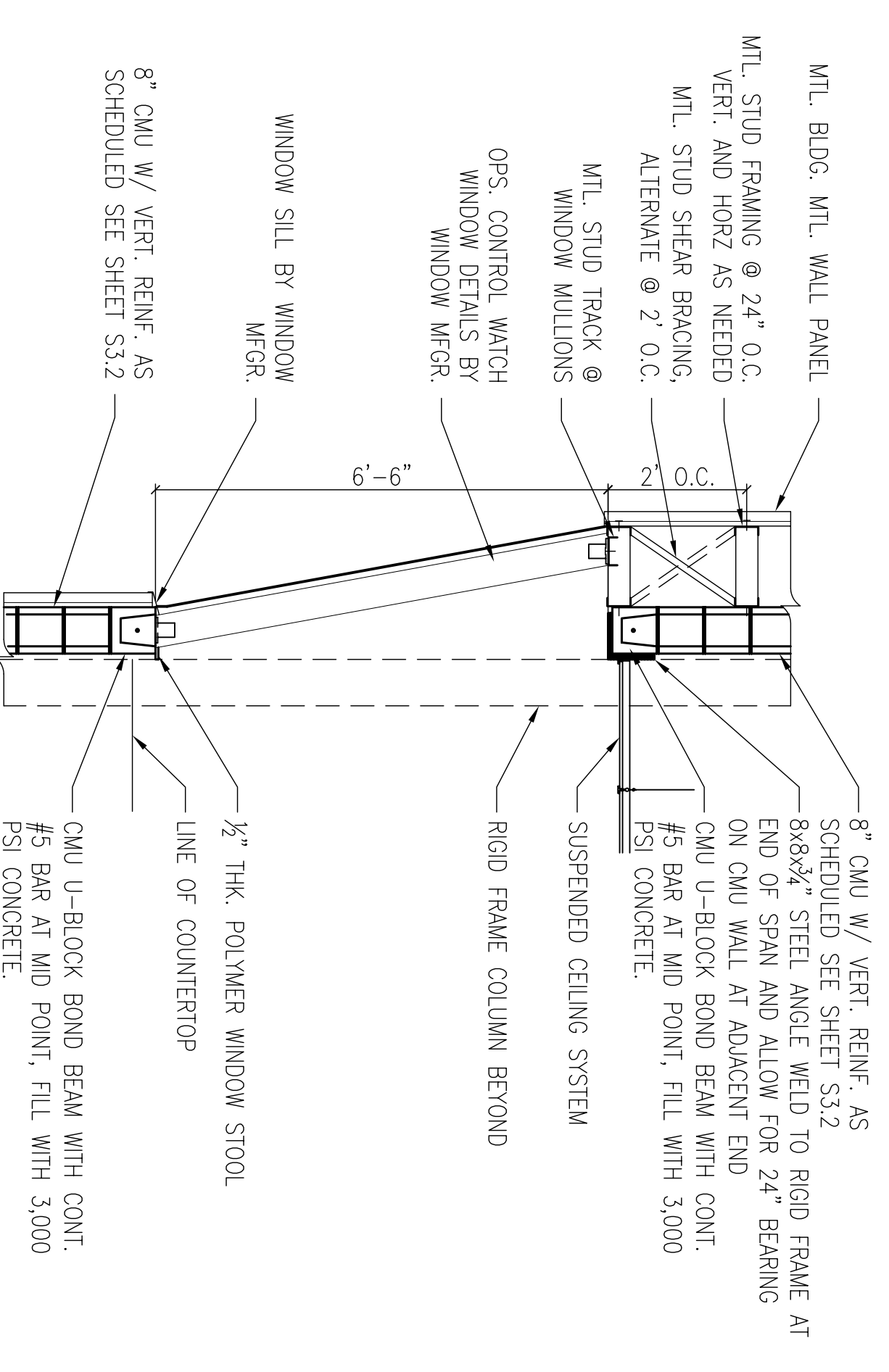
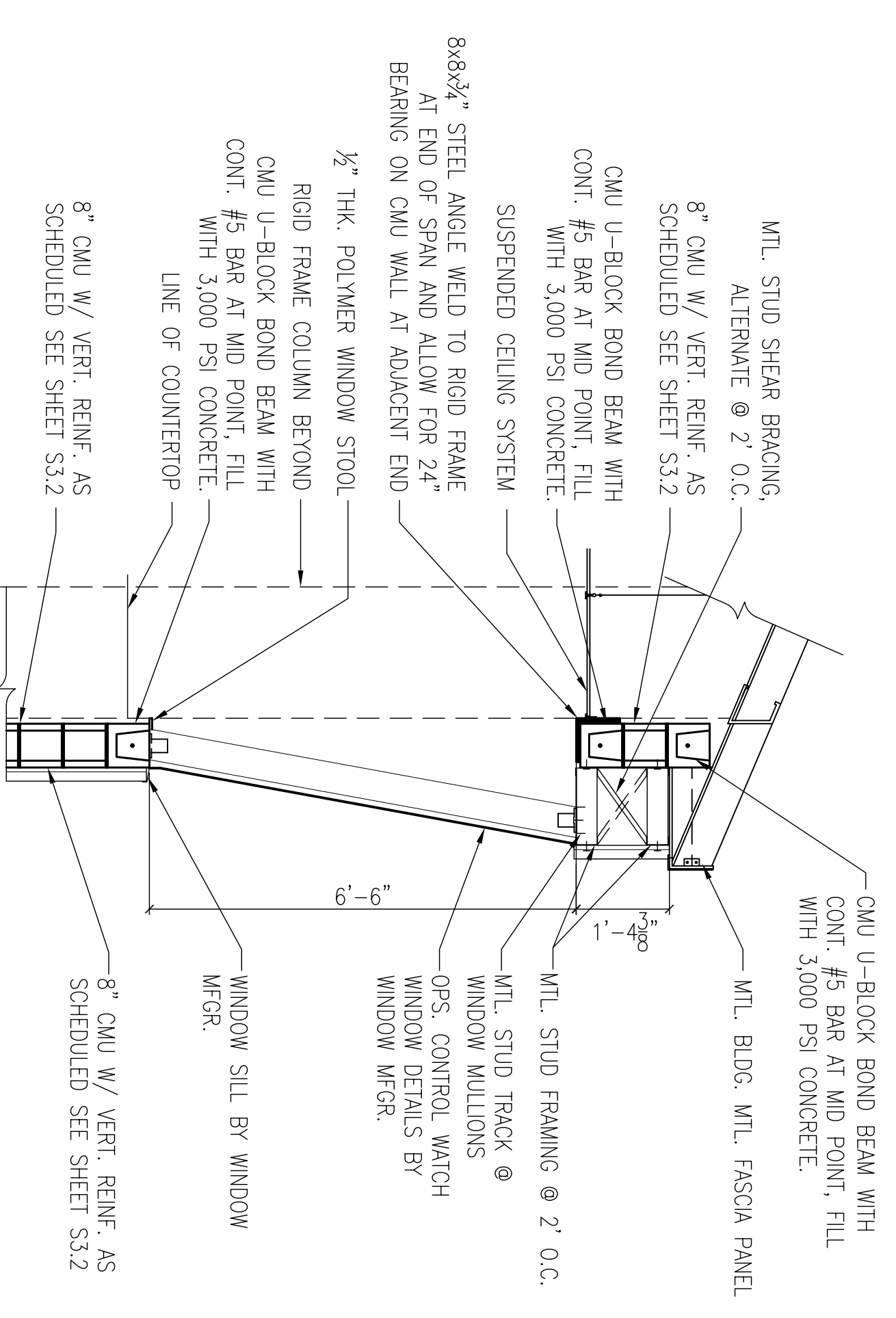
CEILING HEIGHT 10'-0"

1st FLR. I.O.S. 0.0' (16.0' MSL)

PARTIAL ELEVATION @ OPS CONTROL WINDOW
SCALE: 1/4"=1'-0"

PARTIAL ELEVATION @ OPS CONTROL WINDOW
SCALE: 1/4"=1'-0"

PARTIAL SECOND FLOOR PLAN @ OPS CONTROL WINDOW
SCALE: 1/4"=1'-0"



SECTION
SCALE: 1/2"=1'-0"

SECTION
SCALE: 1/2"=1'-0"



<p>DEPARTMENT OF THE NAVY NAVAL FACILITIES ENGINEERING COMMAND SOUTHEAST NAVAL AIR STATION JACKSONVILLE MISSISSIPPI</p> <p>JOHN C. STENNIS SPACE CENTER SOF RIVERINE AND COMBATANT CRAFT OPERATIONS FACILITY - PRE-FINAL BLDG. 2440 OPS. CONTROL WINDOW DETAILS</p>	<p>DES. & WHITE ENGINEER RAYMOND E. JENSEN CHIEF ENGINEER R. DAMMON</p>	<p>EMMETT B. DAMMON REGISTERED PROFESSIONAL ENGINEER STATE OF MISSISSIPPI 1982</p>	<p>DAMMON ENGINEERING, INC. CHIEF ENGINEER DAMMON, P.E. 0094 WHITE 0094/0094 WHITE 1981 649-8312 1981 649-8312</p>		<table border="1"> <tr> <th>SYM</th> <th>DESCRIPTION</th> <th>DATE</th> <th>APPR</th> </tr> <tr> <td> </td> <td> </td> <td> </td> <td> </td> </tr> </table>	SYM	DESCRIPTION	DATE	APPR				
SYM	DESCRIPTION	DATE	APPR										