

REVDATE:

A

B

C

D

MATCHLINE SEE SHT C6.2

MATCHLINE SEE SHT C6.2

MATCHLINE SEE SHT C6.2

1

2

3

4

5

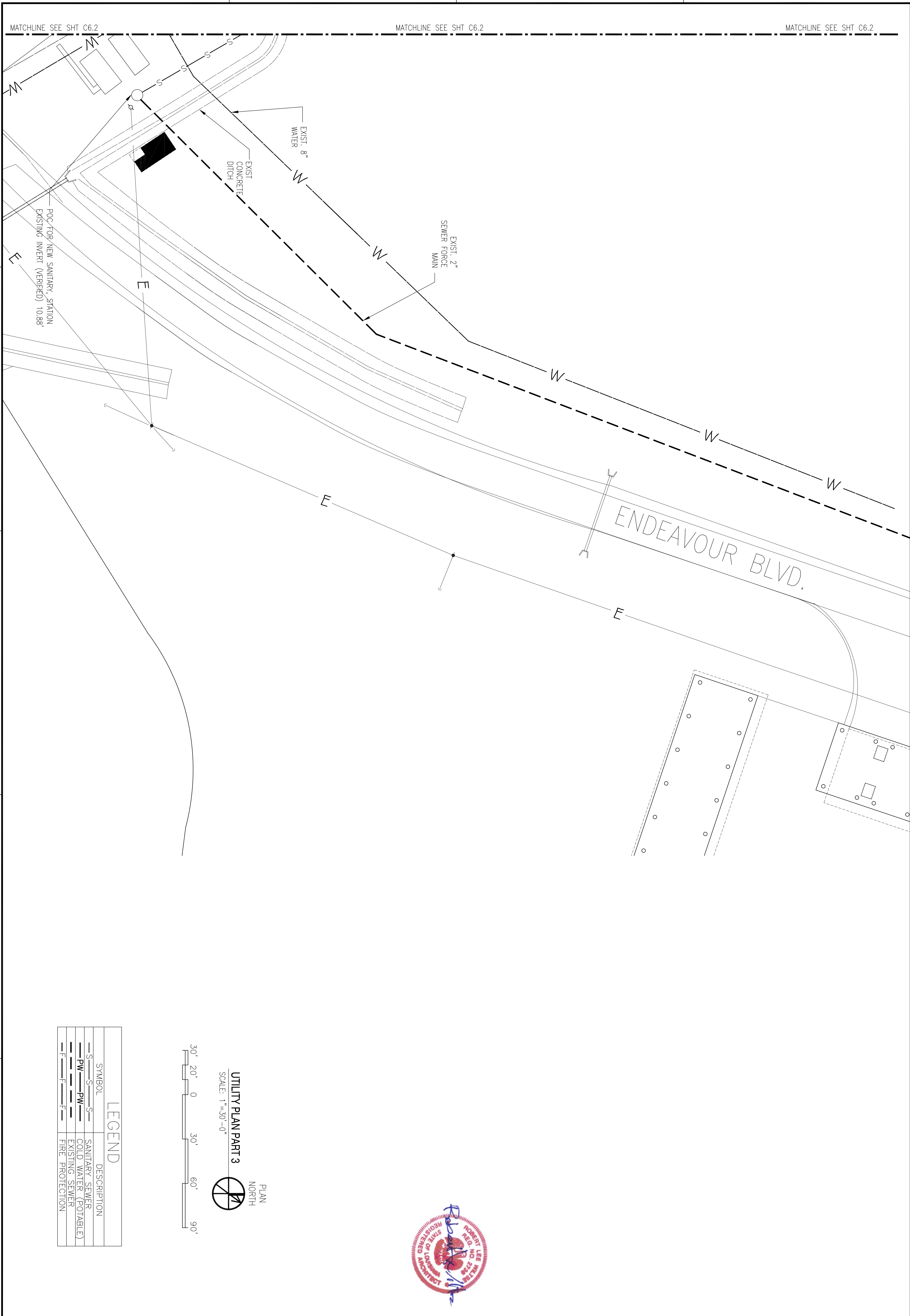
1

2

3

4

5



POC FOR NEW SANITARY STATION
EXISTING INVERT (VERIFIED) 10.88'

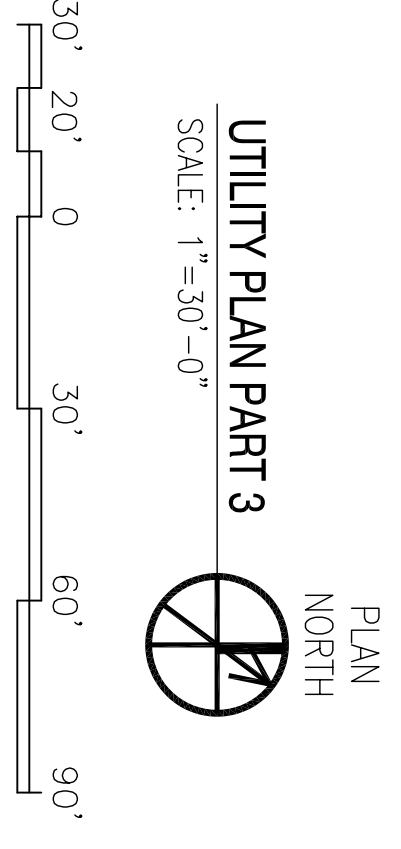
EXIST. 8"
WATER

EXIST.
CONCRETE
DITCH

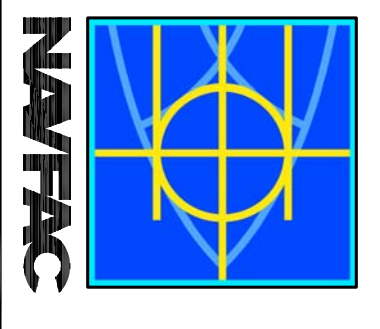
EXIST. 2"
SEWER FORCE
MAIN

ENDEAVOUR BLVD.

LEGEND	
SYMBOL	DESCRIPTION
—S—S—S—	SANITARY SEWER
—PW—PW—PW—	COLD WATER (POTABLE)
—E—E—E—	EXISTING SEWER
—F—F—F—	FIRE PROTECTION



DAMMON ENGINEERING, INC.
 ENGINEERING, ARCHITECTURE, INTERIOR DESIGN, PLUMBING, MECHANICAL, ELECTRICAL, AND CONSTRUCTION MANAGEMENT
 10000 W. GULF BLVD., SUITE 100
 DALLAS, TEXAS 75243
 (972) 649-5312



SYM	DESCRIPTION	DATE	APPR

DEPARTMENT OF THE NAVY
NAVAL FACILITIES ENGINEERING COMMAND SOUTHEAST
 IPT GULF COAST
 JOHN C. STENNIS SPACE CENTER MISSISSIPPI
SOF RIVERINE AND COMBATANT CRAFT OPERATIONS FACILITY - PRE-FINAL
UTILITY PLAN PART 3

DES: C. DAMMON | DRW: J. THANNY
 REVIEWED BY: S. WILSE
 PWD/CHK: T. ARBEP
 CHIEF ENGINEER: P. DAMMON

NAVFAC FORMING NO. 150026/75
 SHEET 28 OF 132

06/04

A

B

C

D