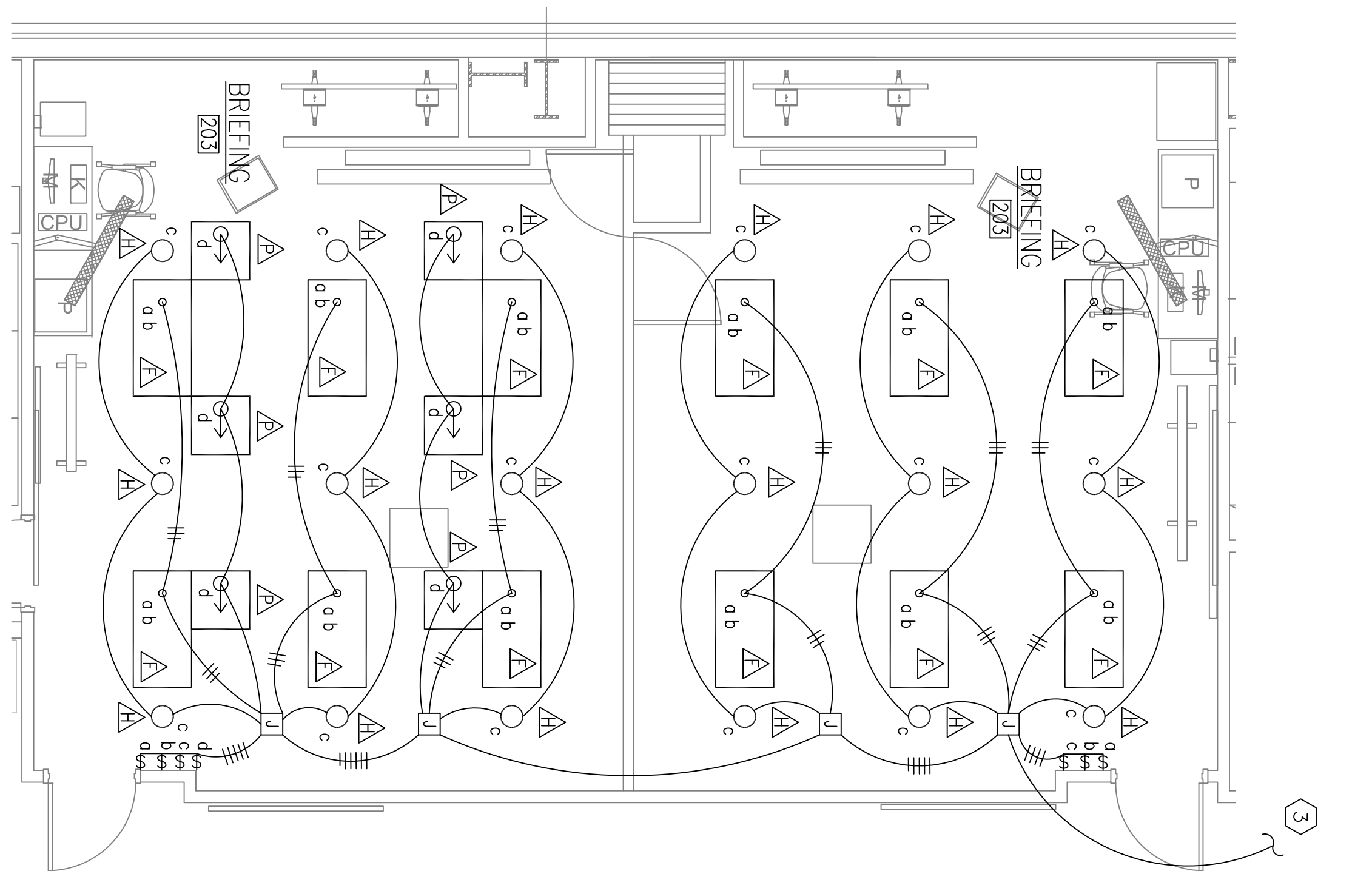
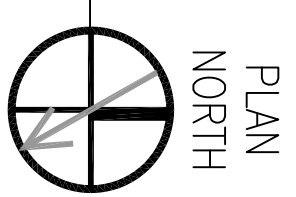
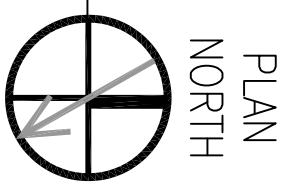


ARMORY ROOF BELOW

OPERATIONS/MAINTENANCE BLDG 2440/2441
2ND FLOOR PLAN - LIGHTING
SCALE: 1/8"=1'-0"
0 4 8 16'



ENLARGED FLOOR PLAN - BRIEFING ROOM 203
LIGHTING
SCALE: 1/4"=1'-0"
0 2' 4' 8'



GENERAL NOTES, THIS SHEET:

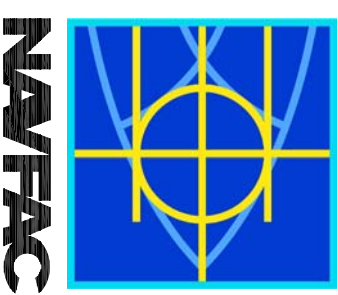
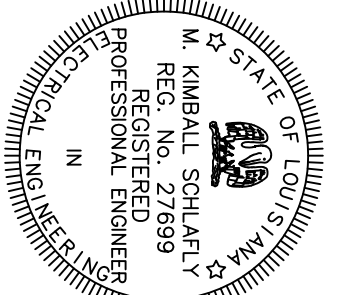
1. ALL FIXTURES TYPE A UNLESS NOTED OTHERWISE.
2. ALL WIRING SHALL BE 3/4"C. 2-#12 AWG AND 1-#12 GRD UNLESS NOTED OTHERWISE.
3. ALL CONDUIT SHALL CONTAIN MINIMUM #12 AWG GROUND WIRE UNLESS NOTED OTHERWISE.
4. MOUNT TYPE E FIXTURES IN MECH/ELEC 213 AT 10'-0" AFF.
5. IN BRIEFING ROOM 203, PROVIDE THE FOLLOWING LIGHT SWITCHES:
 - \$_a 20A, 1P, TOGGLE
 - \$_b 20A, 1P, TOGGLE
 - \$_c 20A, 1P, DIMMER FOR MARK 10 POWERLINE BALLAST
 - \$_d 20A, 1P, TOGGLE

SPECIFIC NOTES, THIS SHEET:

- 1 CONTINUE TO FIRST FLOOR STAIRWAY LIGHT FIXTURES.
- 2 SEE ENLARGED PLAN THIS SHEET FOR CONTINUATION.
- 3 CONTINUE TO ROOM 204.

THESE PLANS AND SPECIFICATIONS HAVE BEEN PREPARED BY OR UNDER OUR DIRECT SUPERVISION, AND WE ARE AWARE OF ALL REGULATORY REQUIREMENTS. WE ARE NOT GENERALLY ADMINISTERING THE WORK.

SCHLAFLY ENGINEERING, LLC
9-4-09
PER: [Signature]
REG. # 27699

 <p>SCHLAFLY ENGINEERING, LLC 121 SOUTH GNOUS STREET NEW ORLEANS, LA 70119 PH: 504-462-7947 FAX: 504-462-7930 M. KIMBALL SCHLAFLY, P.E. LA REG. 27699</p>	 <p>SEPTEMBER 4, 2009</p>	<p>DEPARTMENT OF THE NAVY NAVAL FACILITIES ENGINEERING COMMAND NAVAL FACILITIES ENGINEERING COMMAND SOUTHEAST NAVAL AIR STATION JACKSONVILLE MISSISSIPPI</p> <p>JOHN C. STENNIS SPACE CENTER SOF RIVERINE AND COMBATANT CRAFT OPERATIONS FACILITY</p> <p>BLDG 2440 2ND FLOOR PLAN - LIGHTING</p>	<p>DES: K. SCHLAFLY/DWG: K. SCHLAFLY REVIEWED BY: R. WILTSIE P/W/DWG: T. ARMBR CHIEF ENG/ARCH: P. DAMON</p>	<p>SCALE: AS SHOWN SHEET: 111 OF 132</p>	<p>DATE: _____ APPR: _____</p>
---	---	---	---	--	------------------------------------