

2nd FLR. CIG. HGT. 22'-3"

2nd FLR. T.O.S. 12'-9"

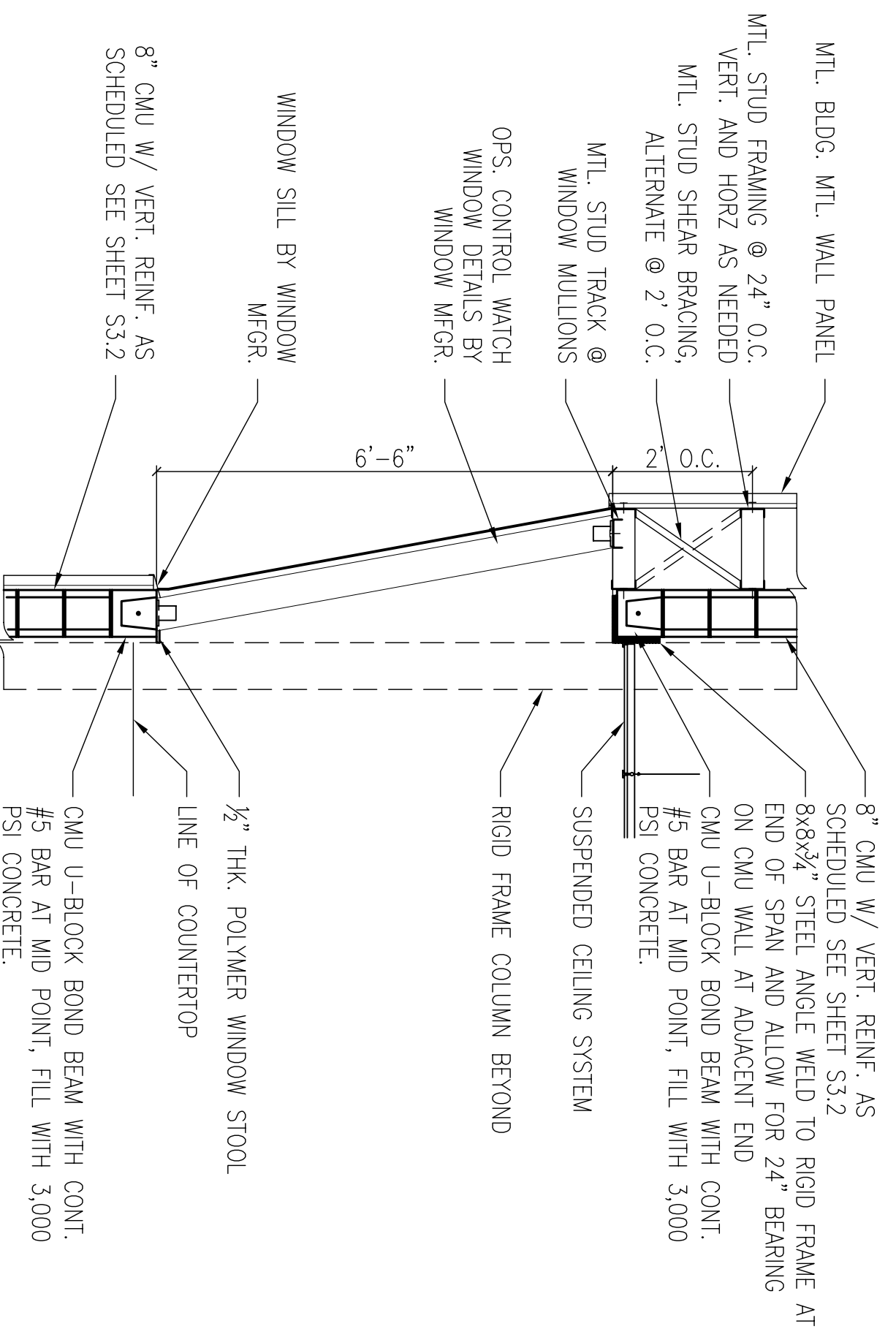
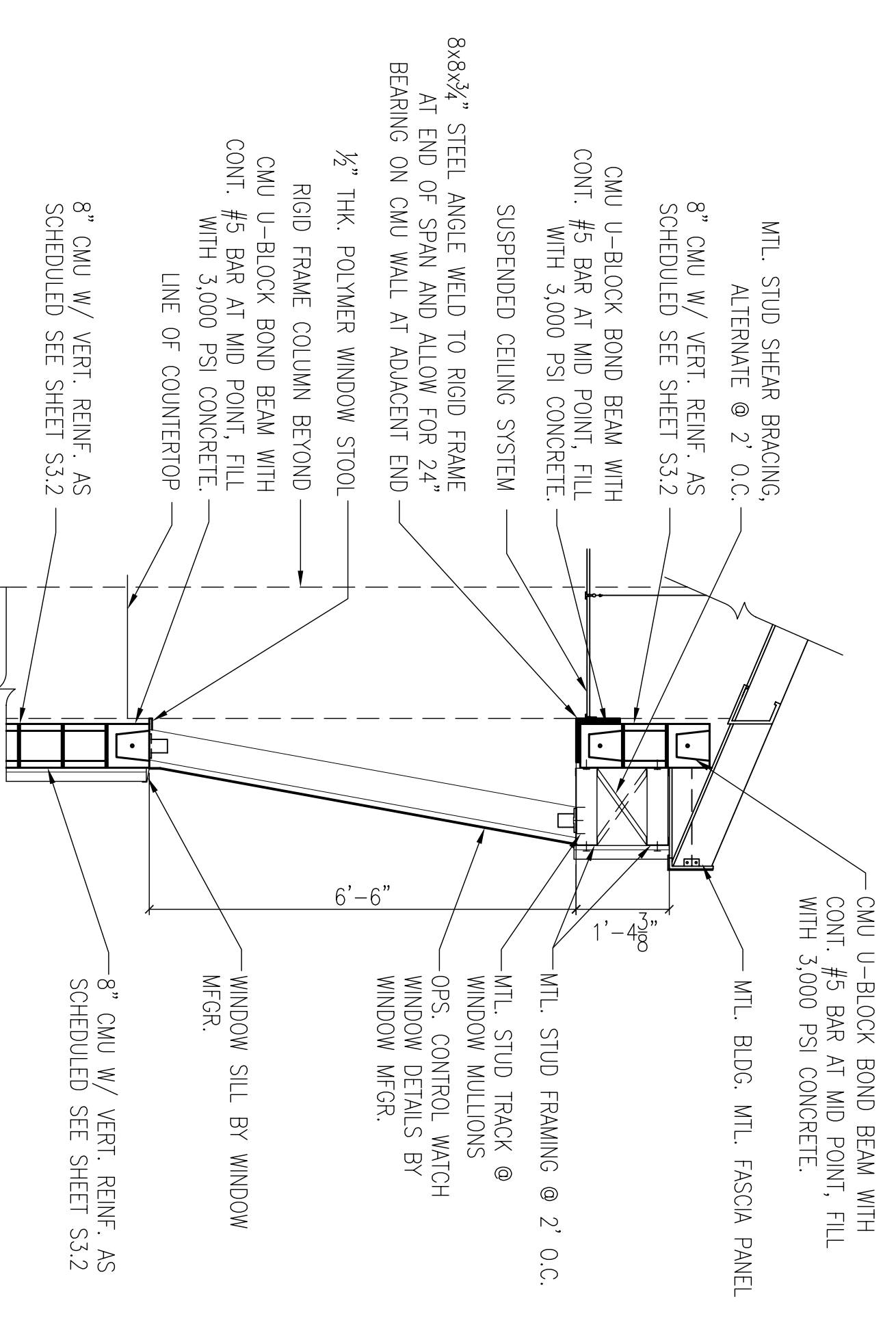
CEILING HEIGHT 10'-0"

1st FLR. T.O.S. 0.0' (16.0' MSL)

PARTIAL ELEVATION @ OPS CONTROL WINDOW
SCALE: 1/4"=1'-0"

PARTIAL ELEVATION @ OPS CONTROL WINDOW
SCALE: 1/4"=1'-0"

PARTIAL SECOND FLOOR PLAN @ OPS CONTROL WINDOW
SCALE: 1/4"=1'-0"



SECTION
SCALE: 1/2"=1'-0"

BB
S3.4

SECTION
SCALE: 1/2"=1'-0"

CC
S3.4

REVDATE:

1

2

3

4

5



DEPARTMENT OF THE NAVY NAVAL FACILITIES ENGINEERING COMMAND SOUTHEAST IFT GULF COAST JOHN C. STENNIS SPACE CENTER SOF RIVERINE AND COMBATANT CRAFT OPERATIONS FACILITY - PRE-FINAL MISSISSIPPI BLDG. 2440 OPS. CONTROL WINDOW DETAILS	NAVAL FACILITIES ENGINEERING COMMAND SOUTHEAST NAVAL AIR STATION JACKSONVILLE MISSISSIPPI JOHN C. STENNIS SPACE CENTER SOF RIVERINE AND COMBATANT CRAFT OPERATIONS FACILITY - PRE-FINAL MISSISSIPPI BLDG. 2440 OPS. CONTROL WINDOW DETAILS	DESS, B. WILTSIE DESS, J. FRANK ENGINEER BY: B. WILTSIE DRAWN & DESIGNED CHECKED BY: J. FRANK DATE: 08/14/2008		DAMMON ENGINEERING, INC. ENGINEER CHIEF ARCHITECT DAMMON, P.E. 0984 WILTSIE 10501 LINDA MAINE SUITE 100 (985) 649-8312 (985) 649-8312 ESTABLISHED 4, 2008		SYM DESCRIPTION DATE APPR
--	--	--	--	---	--	------------------------------------

S3.4

80 OF 132

REVISION: 01 JAN 2009