

Covering Schedule					
Id	Qty	Type	Length	Gage	OP Fin. Color Direction
#6	43	FP12	TBD	TBD	1 A TBD Left to Right
#7	60	FP12	TBD	TBD	1 A TBD Left to Right

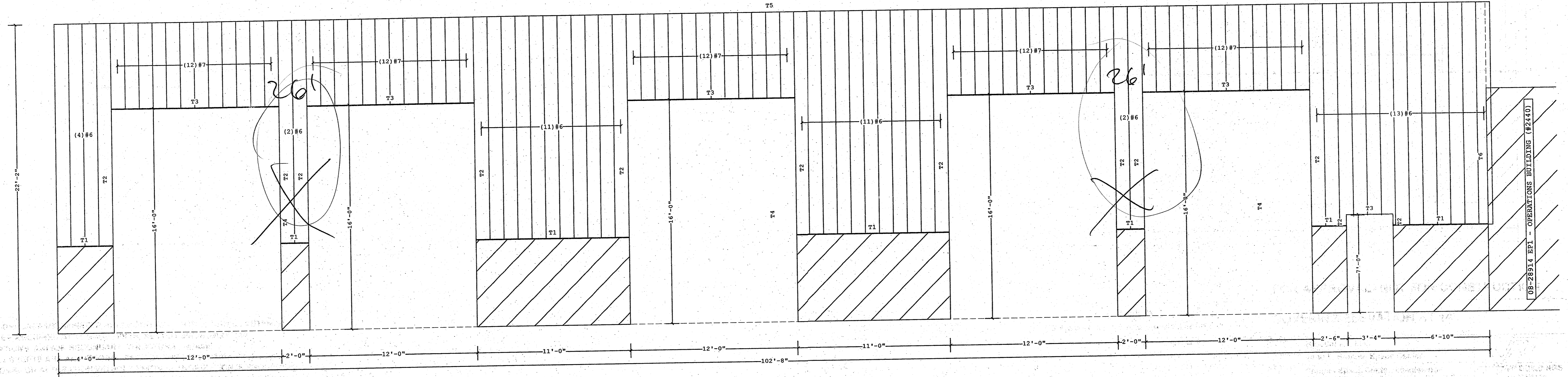
Oper. Code:1=SQ,SQ
Finish:A=AEP
Color:TBD=To Be Determined

Trim Schedule		Color	Details
Id	Parts		
T1	BOTTOM OF PANEL FLASHING	TBD	WC24A1 (Similar)
T2	JAMB TRIM	TBD	WC24A2 (Similar)
T3	HEADER TRIM	TBD	RC38F1
T4	DOWNSPOUT	TBD	WC11A1 (Similar), WC11A4 (Similar)
T5	TOP OF PANEL @ CANOPY	TBD	See pg.
T6	INSIDE CORNER	TBD	

FP12 FLUSH PANEL

Stiffening ribs are not required on the FP12 panel up to the maximum length of 30'. It is always recommended to use stiffening ribs on FP12 panel with lengths over 15'-0" to reduce the possibility of oil canning or unevenness of the flat surfaces of the panel. Oil canning is an inherent characteristic of steel products, not a defect, and therefore is not a cause for panel rejection.

- **PLEASE VERIFY****
1. Panel color
 2. Trim color



COVERING ELEVATION AT B

FOR APPROVAL- NOT FOR CONSTRUCTION

<p>1. PRE-DRILLING 1/8 DIAMETER HOLES FOR WALL STRUCTURAL FASTENERS MAY BE REQUIRED AT 11 GAGE GIRTS, NESTED GIRTS, GIRT LAP LOCATIONS, AND/OR SECONDARY STRUCTURAL BEAMS</p> <p>2. WALL SHEETS ARE AN INTEGRAL PART OF THE STRUCTURAL SYSTEM, REMOVAL OR ALTERATION WITHOUT PRIOR AUTHORIZATION IS PROHIBITED.</p> <p>3. PANELS SHOWN WITH A LENGTH LESS THAN 1-0, 5-0 FOR SSR, MAY HAVE TO BE FIELD CUT.</p> <p>4. SEE JOB DETAILS FOR SHEETING AND TRIM FASTENER SPECIFICATION.</p>	<p>THE VP ENGINEER'S SEAL APPLIES ONLY TO THE WORK PRODUCT OF VP AND DESIGN AND PERFORMANCE REQUIREMENTS SPECIFIED BY VP. THE VP ENGINEER'S SEAL DOES NOT APPLY TO THE PERFORMANCE OR DESIGN OF ANY OTHER PRODUCT OR COMPONENT FURNISHED BY VP EXCEPT TO ANY DESIGN OR PERFORMANCE REQUIREMENTS SPECIFIED BY VP.</p>	<p>THIS DRAWING, INCLUDING THE INFORMATION HEREON, REMAINS THE PROPERTY OF VP BUILDINGS. IT IS PROVIDED SOLELY FOR ERECTING THE BUILDING DESCRIBED IN THE APPLICABLE PURCHASE ORDER AND SHALL NOT BE MODIFIED, REPRODUCED OR USED FOR ANY OTHER PURPOSE WITHOUT PRIOR WRITTEN APPROVAL OF VP BUILDINGS.</p> <p>THE GENERAL CONTRACTOR AND/OR ERECTOR IS SOLELY RESPONSIBLE FOR ACCURATE, GOOD QUALITY WORKMANSHIP IN ERECTING THIS BUILDING IN CONFORMANCE WITH THIS DRAWING, DETAILS REFERENCED IN THIS DRAWING, ALL APPLICABLE VP ERECTION GUIDES, AND INDUSTRY STANDARDS PERTAINING TO PROPER ERECTION, INCLUDING THE CORRECT USE OF TEMPORARY BRACING.</p>	<p>VP Buildings</p> <p>3200 Players Club Circle Memphis TN 38125</p>		<p>COVERING ELEVATION AT B</p>	
			<p>REV</p> <p>DATE</p> <p>BY</p> <p>DESCRIPTION</p>	<p>BUILDER Broadmoor, LLC</p> <p>CUSTOMER John F. Stennis Space Center</p> <p>LOCATION Stennis Space Center, Mississippi</p> <p>PROJECT Riverine and Combatant Craft Operations Facility</p> <p>BUILDERS PO#</p>	<p>VP BUILDINGS</p> <p>VARCO PRUDEN</p> <p>A BlueScope Steel Company</p> <p>VP VERSION: 7.1c</p>	<p>JOBNO 08-28914 EP2</p> <p>DATE 2/9/09</p> <p>DRAWN/CHECK MWM</p> <p>PAGE 25</p>