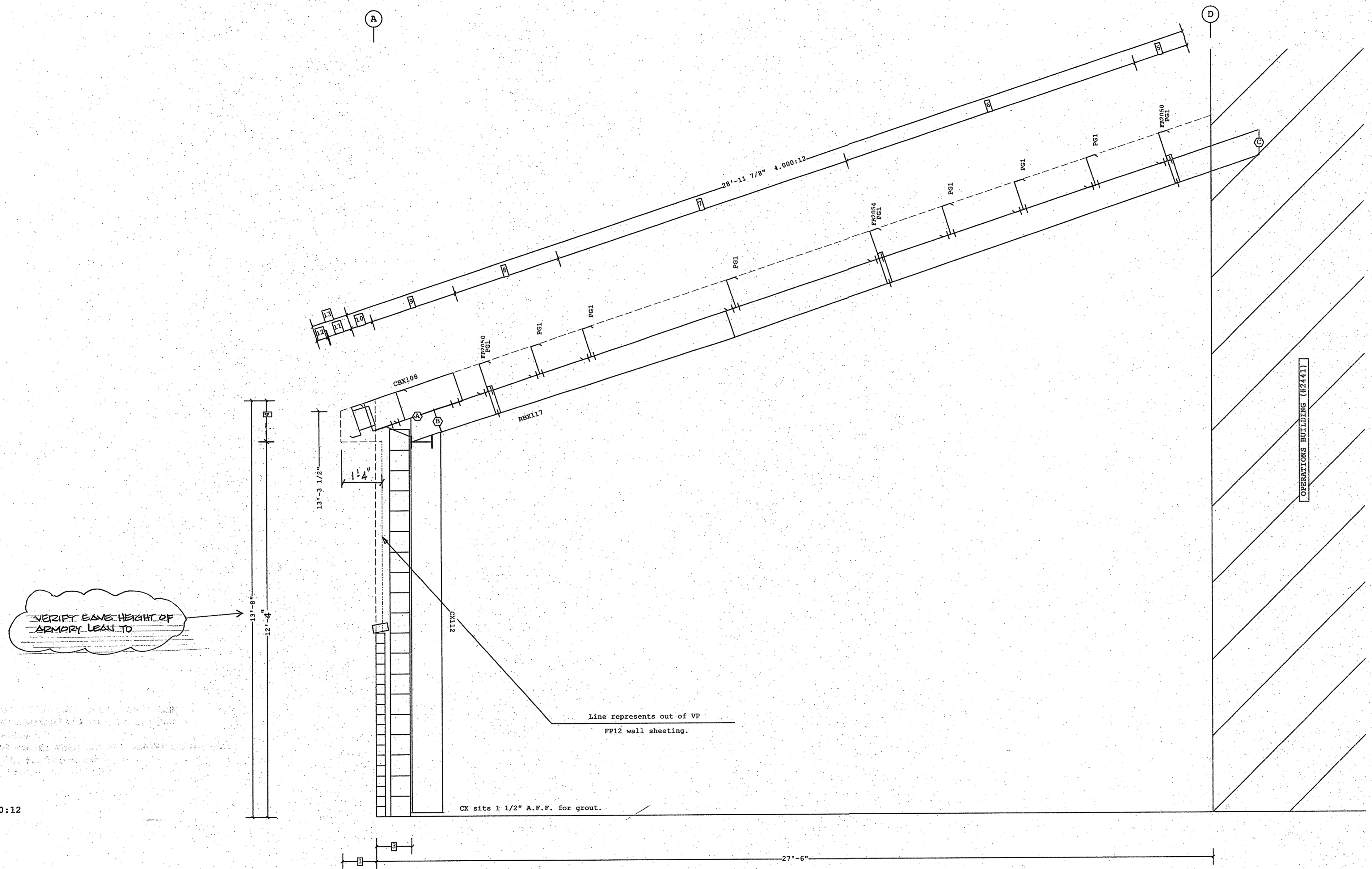


Part	Width	Thick	WebThk.	Depth1	Depth2	Approx. Lgth
CBX108	5"	.1345	.1345	11 1/2"	11 1/2"	3'-1 1/8"
CX112	5"	.1875	.1345	1'-0"	1'-0"	13'-1 15/16"
RBX117	5"	.2500	.1345	9"	11"	28'-7 1/4"
	5"	.2500	.1345	11"	9 5/16"	

Bolt Connection & Plate Schedule							
Id	Qty	ASTM	Bolt Dia.	Bolt length	Plate Thick.	Rows Out	Rows In
A	8	A325	1/2"	1 1/2"	3/8"	-	-
B	4	A325	3/4"	2"	3/8"	1	1
C	4	A325	1/2"	1 1/2"	3/8"	2	-

Frame Clearances
 Vert. Clearance at member 1(CX112): 12'-7 1/16"
 Finished Floor Elevation = 100'-0" (Unless Noted Otherwise)



VERIFY EAVE HEIGHT OF ARMORY LEAN TO

- 13 1'-2 1/4" 4.000:12
- 12 4 1/2"
- 11 9 3/4"
- 10 8 9/16"
- 9 2'-10 9/16"
- 8 2 @ 1'-9 7/16"
- 7 2 @ 5'-0"
- 6 4 @ 2'-6"
- 5 1'-9 13/16"
- 4 1'-4"
- 3 1'-2"
- 2
- 1 1'-1 1/2"

Dimension Key

FRAME CROSS SECTION AT FRAME LINE (S) 8

Shape Name = Operations Building Lean-to Wall 2, Frame 1

1. USE 1/2 X 1 1/2 A325 SNUG TIGHTENED BOLTS FOR PURLIN TO FRAME, GIRT TO FRAME, AND GIRT TO CLIP CONNECTIONS UNLESS NOTED OTHERWISE.
 2. SLOT REINFORCEMENT PLATES NEED NOT BE LOCATED ON THE SAME SIDE OF THE WEB AS THE HILLSIDE WASHER.

THE VP ENGINEER'S SEAL APPLIES ONLY TO THE WORK PRODUCT OF VP AND DESIGN AND PERFORMANCE REQUIREMENTS SPECIFIED BY VP. THE VP ENGINEER'S SEAL DOES NOT APPLY TO THE PERFORMANCE OR DESIGN OF ANY OTHER PRODUCT OR COMPONENT FURNISHED BY VP EXCEPT TO ANY DESIGN OR PERFORMANCE REQUIREMENTS SPECIFIED BY VP.

THIS DRAWING, INCLUDING THE INFORMATION HEREON, REMAINS THE PROPERTY OF VP BUILDINGS. IT IS PROVIDED SOLELY FOR ERECTING THE BUILDING DESCRIBED IN THE APPLICABLE PURCHASE ORDER AND SHALL NOT BE MODIFIED, REPRODUCED OR USED FOR ANY OTHER PURPOSE WITHOUT PRIOR WRITTEN APPROVAL OF VP BUILDINGS.

THE GENERAL CONTRACTOR AND/OR ERECTOR IS SOLELY RESPONSIBLE FOR ACCURATE, GOOD QUALITY WORKMANSHIP IN ERECTING THIS BUILDING IN CONFORMANCE WITH THIS DRAWING, DETAILS REFERENCED IN THIS DRAWING, ALL APPLICABLE VP ERECTION GUIDES AND INDUSTRY STANDARDS PERTAINING TO PROPER ERECTION, INCLUDING THE CORRECT USE OF TEMPORARY BRACING.

REV	DATE	BY	DESCRIPTION
			NTS

VP Buildings			
3200 Players Club Circle Memphis TN 38125			
BUILDER	Broadmoor, LLC		
CUSTOMER	John F. Stennis Space Center		
LOCATION	Stennis Space Center, Mississippi		
PROJECT	Riverine and Combatant Craft Operations Facility		
BUILDERS PO#			

FRAME CROSS SECTION AT FRAME LINE(S) 8			
BUILDER	Broadmoor, LLC		
CUSTOMER	John F. Stennis Space Center		
LOCATION	Stennis Space Center, Mississippi		
PROJECT	Riverine and Combatant Craft Operations Facility		
BUILDERS PO#			

VP BUILDINGS
VARCO PRUDEN
A BlueScope Steel Company
VPC VERSION: 7.1c

JOBNO 08-28914
DATE 02/12/2009
DRAWN/CHECK RMM/ML
PAGE 14