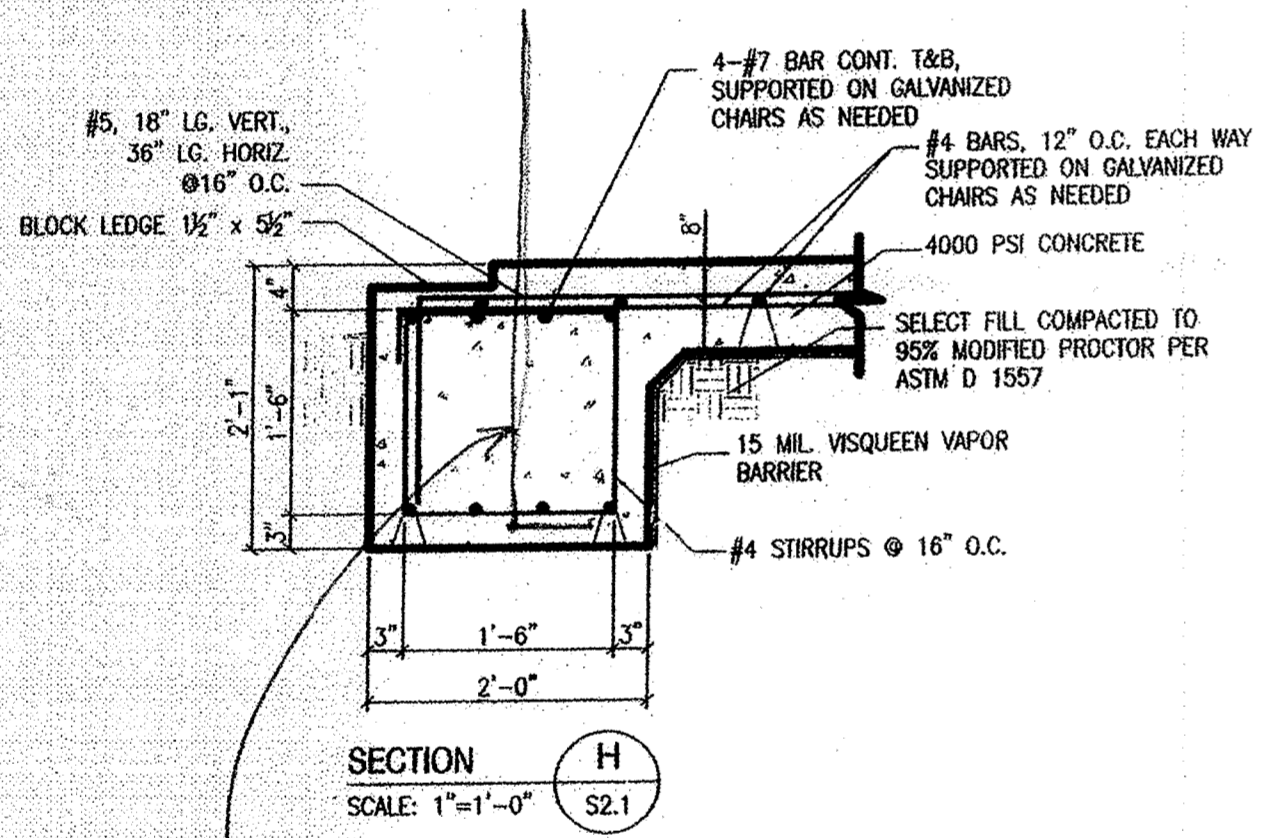
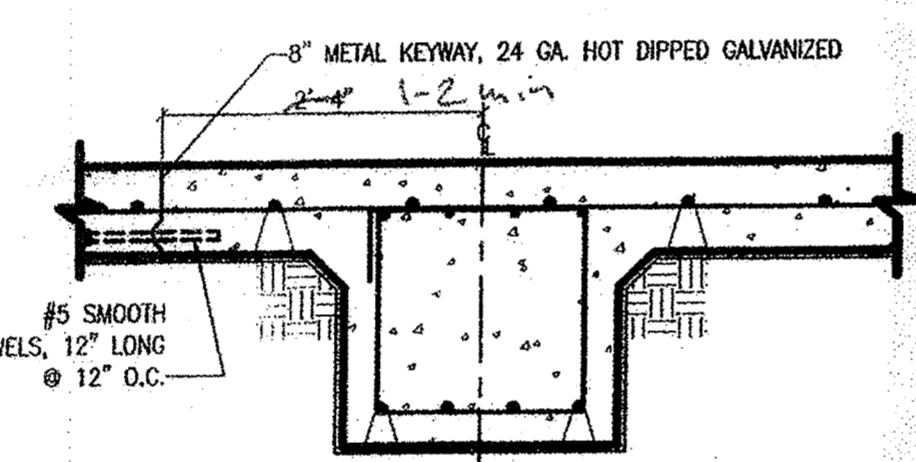


#4, embed 1-9, 1-9 exposed, 48" o.c.

BOAT STORAGE BLDG. 2442 FOUNDATION PLAN  
SCALE: 1"=1'-0" S2.1

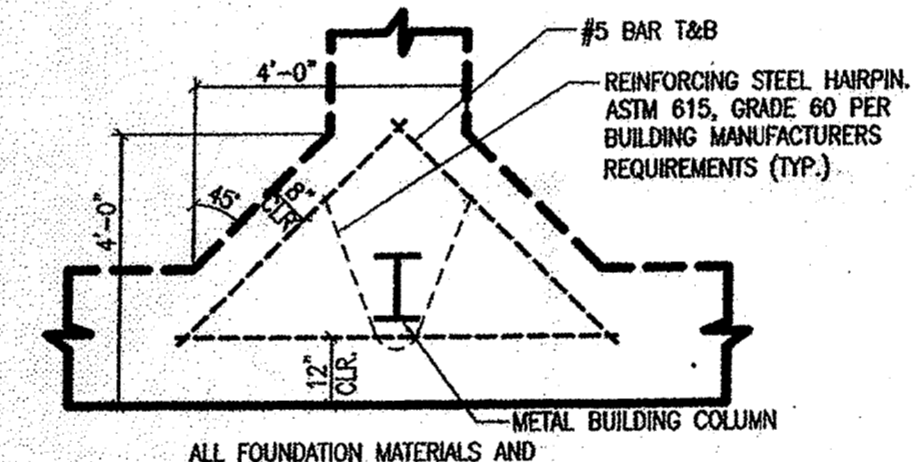


#4 hook, 3'-6" x 6 1/2", @ 48" o.c., @ E of CMU



SECTION K  
SCALE: 1"=1'-0" S2.1

- Provide control joint cover.  
- Interrupt rebar mat ea. side of joint.



FOOTING @ COLUMN DETAIL  
SCALE: 1/2"=1'-0" S2.1

LABEL	RD	PL	QTY	SZ	LNETH	BARREK	GR.	BMS.	GRD	EP	PLACING	NOTES
PLAN LOCATION: GR. BMS.												
BOT	3											
SECTION: GB1												
4 RUNS LAP 4-06 EACH RUN CONSISTING OF: 7 # 7 30-00												
BOTTOM CONT.												
TOP												
4 RUNS LAP 5-10 EACH RUN CONSISTING OF: 7 # 7 30-00												
TOP CONT.												
STIR												
135 # 4 4B1												
STIRRUPS @ 16"												
S/D	2											
136 # 5 5B2												
SLAB DOWELS AT EXTERIOR EDGE ONLY!!												
SLAB DOWELS @ 16"												
BOT	13											
SECTION: GB2												
4 RUNS LAP 4-06 EACH RUN CONSISTING OF: 1 # 7 30-00												
BOTTOM CONT.												
TOP												
4 RUNS LAP 5-10 EACH RUN CONSISTING OF: 1 # 7 30-00												
TOP CONT.												
STIR												
34 # 4 4B1												
STIRRUPS @ 16"												
S/D	2											
36 # 5 5B2												
SLAB DOWELS AT EXTERIOR EDGE ONLY!!												
SLAB DOWELS @ 16"												
CBB	16											
SECTION: CORNERS												
TYPICAL CORNER BARS:												
4 # 7 7B3												
4 # 7 7B4												
BOT. CORNER BARS												
CBT												
TOP CORNER BARS												
PERP	4											
CORNERS FOOTINGS AT COLUMNS:												
2 X 2 # 5 7-06												
2 # 5 10-06												
PERP. BARS T&B												
DIAG												
DIAG. BARS T&B												
PARL	12											
INTERM. FOOTINGS AT COLUMNS:												
2 X 2 # 5 7-00												
2 # 5 5-00												
PARALLEL BAR T&B												
DIAG												
DIAG. BARS T&B												
PLAN LOCATION: SLAB												
HLW	1											
SECTION: SLAB												
47-RUNS @ 1-00 LAP 2-01												
EACH RUN CONSISTING OF:												
6 # 4 30-00												
1 # 4 14-00												
HID-DEP. L/W @ 12"												
HID-DEP. L/W @ 12"												
HSW												
182 RUNS @ 1-00 LAP 2-01												
EACH RUN CONSISTING OF:												
1 # 4 30-00												
1 # 4 18-07												
HID-DEP. S/W @ 12"												
HID-DEP. S/W @ 12"												
DWLS												
KEY JOINT DOWELS @ 12":												
47 # 5 1-00												
P60												
EN. DOWELS @ 12"												

\*\* PLAIN ROUNDS INCLUDED ON SCHEDULE \*\*

BAR	END	BENDING DIMENSIONS														
SZ	EP	MARK	Y	TYP	CD	A	B	C	D	E	F/R	G	H	J	K	O
7	7B3	17					4-06	4-06								
7	7B4	17					5-18	5-18								
5	5B2	17					1-06	3-00								
4	4B1	17					0-042	1-06	1-06	1-06	1-06	0-042				

**DAMMON ENGINEERING INC**  
 Date: 4-27-09 Project: Stennis RQF  
 Reviewed:   
 Reviewed as Noted:   
 Review and Resubmit:   
 Rejected:   
 Other:   
 Corrections or comments made on these drawings during this review do not relieve the contractor from compliance with requirements of the drawings and specifications. This check is only for review of the general conformance with the design concept of the drawings and general compliance with the information given in the contract documents. The contractor is responsible for continuing and orienting all quantities and dimensions, selecting material processes and techniques of construction, coordinating his or her work with that of all other trades and performing all in a safe and satisfactory manner.  
 Submitted Item: Conc. Reinforcement  
 Comments:

**BROADMOOR, L.L.C.**  
 I hereby agree that the (equipment) (material) (article) shown and marked in this submittal is that proposed to be incorporated with contract number N69450-05-D-0026, is in compliance with the contract documents, can be installed in the allocated spaces, and is submitted for Government approval.  
 Date: 4/21/09  
 Date: 4/21/09  
 Date:

**REVISIONS**

NO.	DATE	BY	REMARKS
1	4-14	RC	REVISED PER 10 APRIL 2009
2	4-14	RC	REVISED PER 10 APRIL 2009
3	4-14	RC	REVISED PER 10 APRIL 2009
4	4-14	RC	REVISED PER 10 APRIL 2009
5	4-14	RC	REVISED PER 10 APRIL 2009
6	4-14	RC	REVISED PER 10 APRIL 2009
7	4-14	RC	REVISED PER 10 APRIL 2009
8	4-14	RC	REVISED PER 10 APRIL 2009
9	4-14	RC	REVISED PER 10 APRIL 2009
10	4-14	RC	REVISED PER 10 APRIL 2009

**NATIONAL POLYPAB COMPANY, INC.**  
 13120 CARRERE COURT NEW ORLEANS, LA 70129  
 PH# (504) 284-1082 FAX# (504) 284-1085  
 CONTRACTOR SPECIALTIES:  
 REINFORCING BARS - REINFORCING MESH - POLYETHYLENE FILM  
 CONCRETE ACCESSORIES - TUBE FORMS - STYROFOAM FORM BLOCKING

**NATIONAL POLYPAB CO.**

PROJECT: SOF RIVERINE AND COMBATANT CRAFT OPERATIONS FACILITY  
 LOCATION: MS HWY 607 - STENNIS SPACE CENTER, MS.  
 CUSTOMER: NAVAL CONCRETE SERVICES, INC.  
 ARCHITECT: COAST FACILITIES ENGINEERING COMMAND  
 DRAWN BY: RVG DATE: 04-7-09

**PRINT RECORD**

NO.	FOR	DATE	NO.	FOR	DATE
5	B/L	04-07-09	4	B/L	04-07-09
4	B/L	04-07-09	3	B/L	04-07-09

CONTRACT NUMBER: 109-12  
 DRAWING NUMBER: R2 OF 3