

Covering Schedule								
Id	Qty	Type	Length	Gage	OP	Fin.	Color	Direction
#8	75	FP12	TBD	22	1	A	TBD	Left to Right
#9	57	FP12	TBD	22	1	A	TBD	Left to Right
#10	12	FP12	TBD	22	1	A	TBD	Left to Right
#11	7	FP12	TBD	22	1	A	TBD	Left to Right
#13	34	FP12	TBD	22	1	A	TBD	Left to Right
#14	12	FP12	TBD	22	1	A	TBD	Left to Right
#15	12	FP12	TBD	22	1	A	TBD	Left to Right
#42	27	FP12	TBD	22	1	A	TBD	Right to Left
#44	1	FP12	TBD	22	1	A	TBD	Right to Left

Oper. Code:1=SQ,SQ  
 Finish:A=AEP  
 Color:TBD=To Be Determined  
 \*NOTE: Panels to be FIELD SLOPE CUT @ LEAN-TO\*

Trim Schedule	
Id	Parts
T1	BOTTOM OF PANEL FLASHING
T2	JAMB TRIM
T3	HEADER TRIM
T4	DOWNSPOUT
T5	TOP OF PANEL @ CANOPY
T6	INSIDE CORNER
T7	SILL TRIM
T8	SLR WALL TO ROOF
T9	PURLIN CLOSURES & TRIM

Color	Details
TBD	
TBD	WC24A1 (Similar)
TBD	WC24A2 (Similar)
TBD	RC38F1
TBD	WC11A1 (Similar), WC11A4 (Similar)
TBD	See pg.
TBD	See pg.
Match Roof Color	RC14E1, WC66A2
TBD	RC80A2, RC80A3, RC80C1, RC80C4, RC80D4, WC12A1 (Similar)

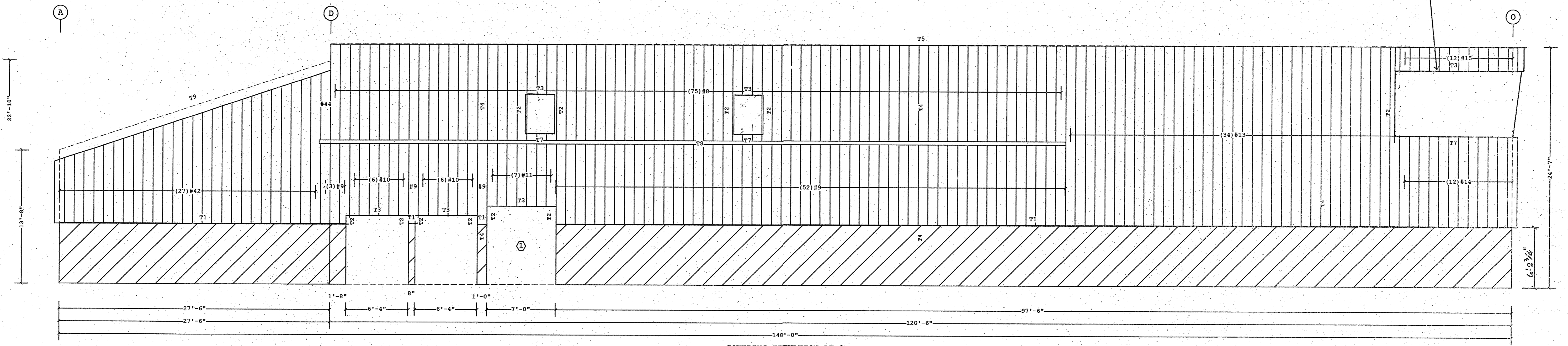
**\*\*PLEASE VERIFY\*\***  
 1. Panel color  
 2. Trim color

**Part Mark Key**  
 1 RECESSED ENTRY  
 VP Buildings to supply  
 FP12 wall panels (above  
 masonry), FP12 soffit,  
 and assoc. trim. Secondary  
 is Not By VP (NBVP).

**FP12 FLUSH PANEL**

Stiffening ribs are not required on the FP12 panel up to the maximum length of 30'. It is always recommended to use stiffening ribs on FP12 panel with lengths over 15'-0" to reduce the possibility of oil canning or unevenness of the flat surfaces of the panel. Oil canning is an inherent characteristic of steel products, not a defect, and therefore is not a cause for panel rejection.

PLEASE FURNISH SECTION THROUGH SLOPING WINDOW & ALL APPLICABLE DETAILS



COVERING ELEVATION AT 1

Shape Name = Operations Building, Wall = 2, Shape = Operations Building Lean-to, Wall = 1

- PRE-DRILLING 1/8 DIAMETER HOLES FOR WALL STRUCTURAL FASTENERS MAY BE REQUIRED AT 11 GAGE GIRTS, NESTED GIRTS, GIRT LAP LOCATIONS, AND/OR SECONDARY STRUCTURAL BEAMS
- WALL SHEETS ARE AN INTEGRAL PART OF THE STRUCTURAL SYSTEM, REMOVAL OR ALTERATION WITHOUT PRIOR AUTHORIZATION IS PROHIBITED.
- PANELS SHOWN WITH A LENGTH LESS THAN 1-0, 5-0 FOR SSR, MAY HAVE TO BE FIELD CUT.
- SEE JOB DETAILS FOR SHEETING AND TRIM FASTENER SPECIFICATION.

THE VP ENGINEER'S SEAL APPLIES ONLY TO THE WORK PRODUCT OF VP AND DESIGN AND PERFORMANCE REQUIREMENTS SPECIFIED BY VP. THE VP ENGINEER'S SEAL DOES NOT APPLY TO THE PERFORMANCE OR DESIGN OF ANY OTHER PRODUCT OR COMPONENT FURNISHED BY VP EXCEPT TO ANY DESIGN OR PERFORMANCE REQUIREMENTS SPECIFIED BY VP.

THIS DRAWING, INCLUDING THE INFORMATION HEREON, REMAINS THE PROPERTY OF VP BUILDINGS. IT IS PROVIDED SOLELY FOR ERECTING THE BUILDING DESCRIBED IN THE APPLICABLE PURCHASE ORDER AND SHALL NOT BE MODIFIED, REPRODUCED OR USED FOR ANY OTHER PURPOSE WITHOUT PRIOR WRITTEN APPROVAL OF VP BUILDINGS. THE GENERAL CONTRACTOR AND/OR ERECTOR IS SOLELY RESPONSIBLE FOR ACCURATE, GOOD QUALITY WORKMANSHIP IN ERECTING THIS BUILDING IN CONFORMANCE WITH THIS DRAWING. DETAILS REFERENCED IN THIS DRAWING, ALL APPLICABLE VP ERECTION GUIDES, AND INDUSTRY STANDARDS PERTAINING TO PROPER ERECTION, INCLUDING THE CORRECT USE OF TEMPORARY BRACING.

VP Buildings			
3200 Players Club Circle Memphis TN 38125			
REV	DATE	BY	DESCRIPTION

COVERING ELEVATION AT 1	
BUILDER	Broadmoor, LLC
CUSTOMER	John F. Stennis Space Center
LOCATION	Stennis Space Center, Mississippi
PROJECT	Riverine and Combatant Craft Operations Facility
BUILDERS PO#	

VP BUILDINGS  
VARCO PRUDEN  
A BlueScope Steel Company  
VPB VERSION: 7.1c

JOBNO	08-28914
DATE	2/12/2009
DRAWN/CHECK	MWM
PAGE	30