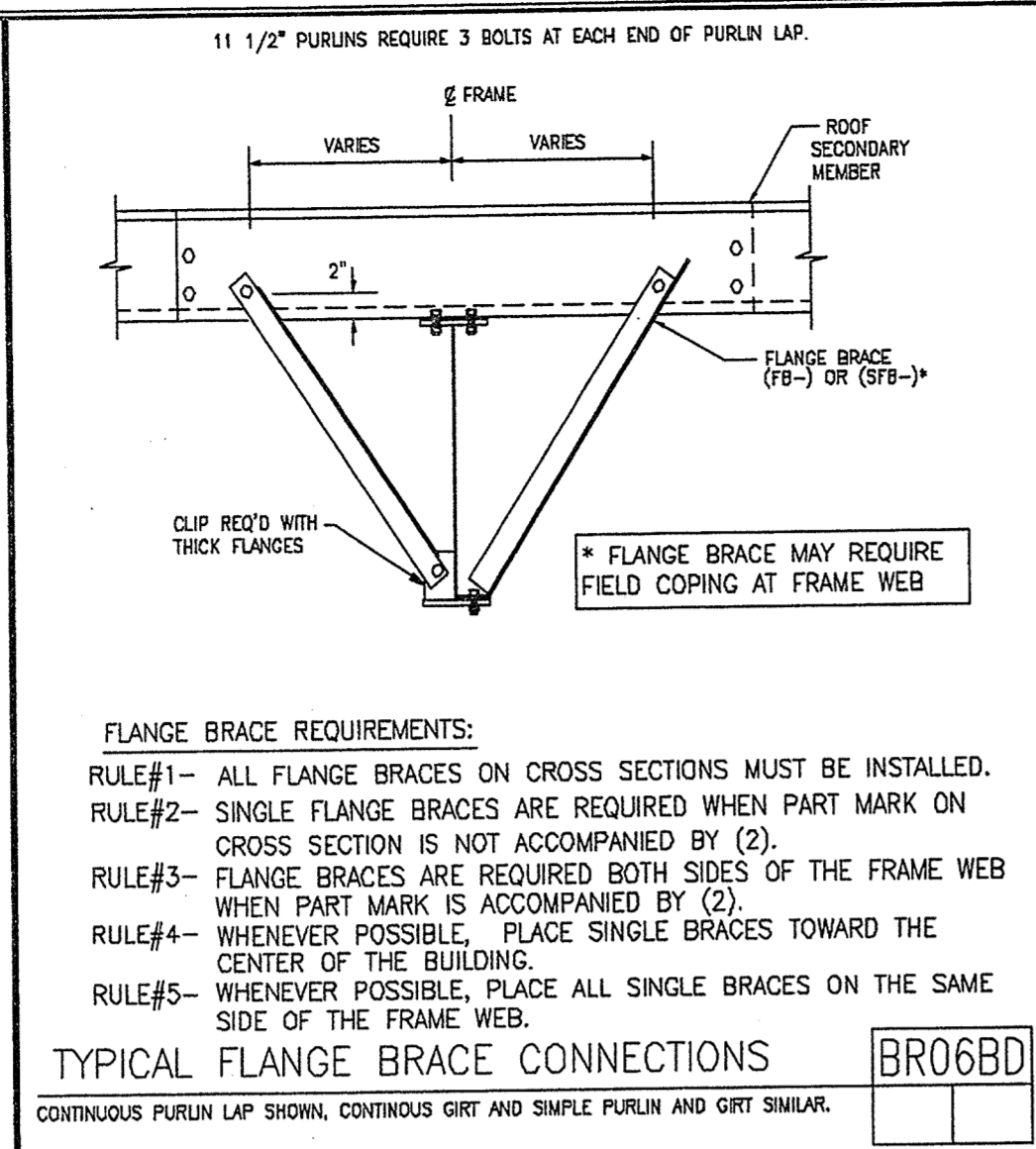
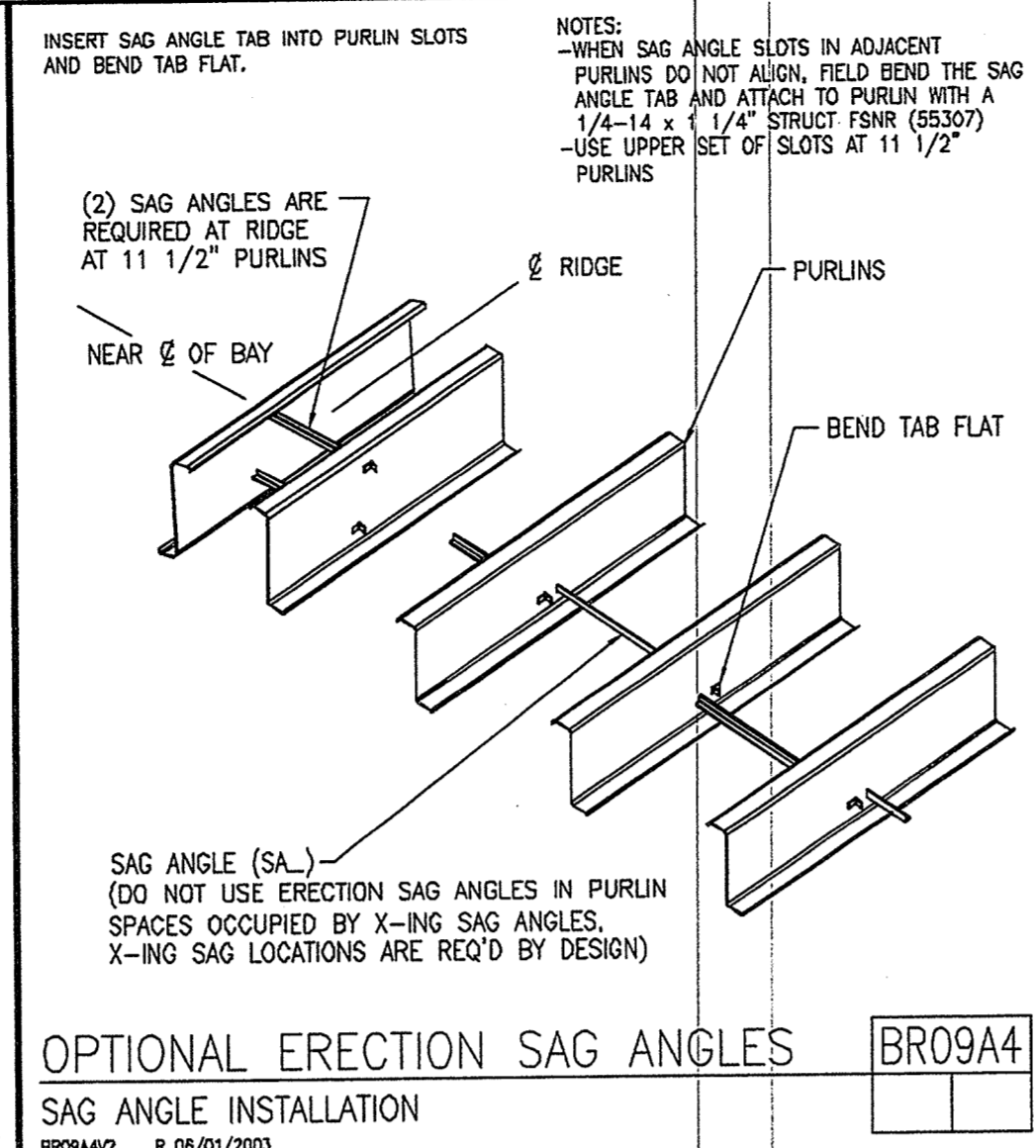


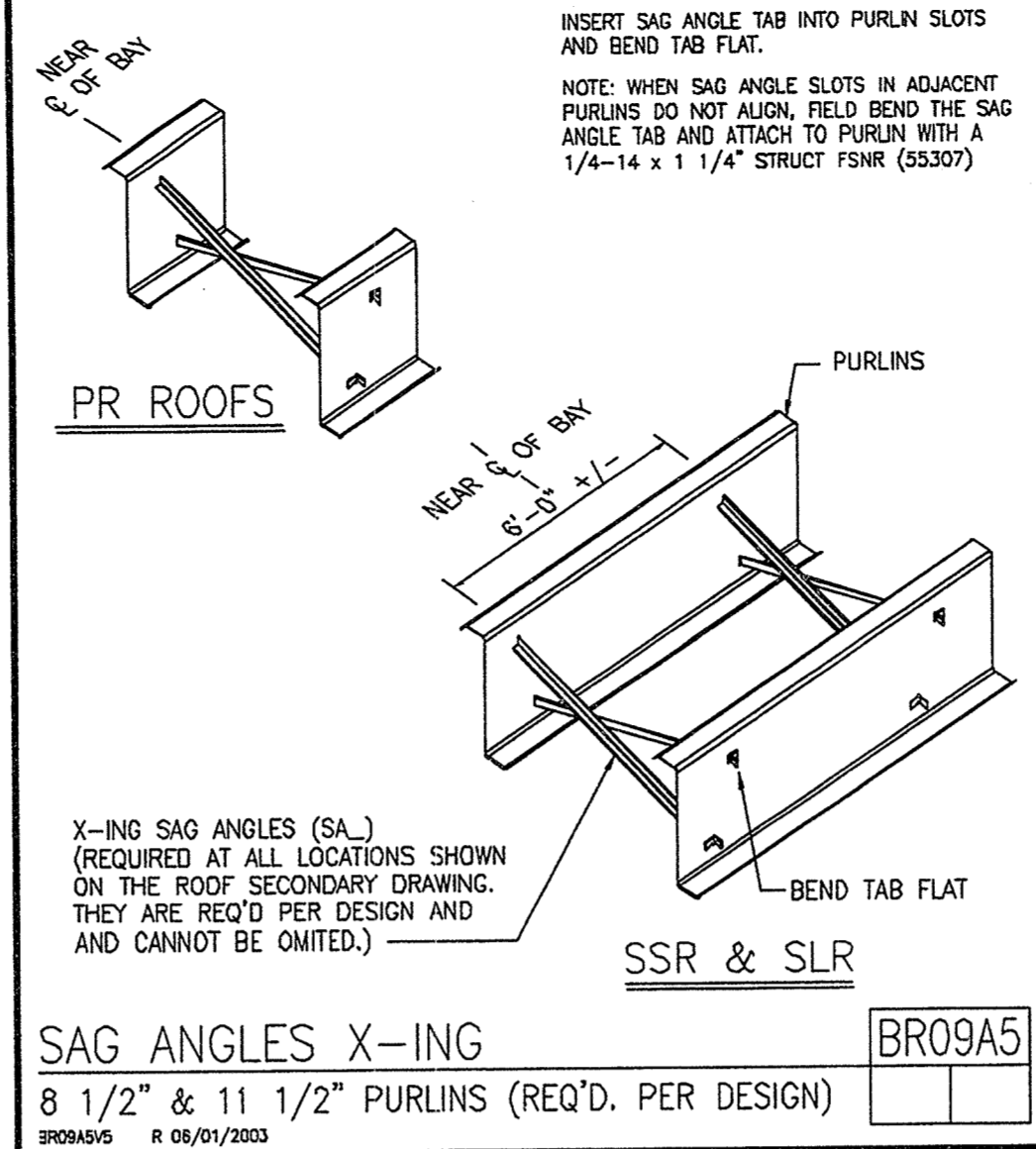
ROD BRACING AT COL. BASE
3-PLATE OR GAGE
BR02A14 R 11/15/2005



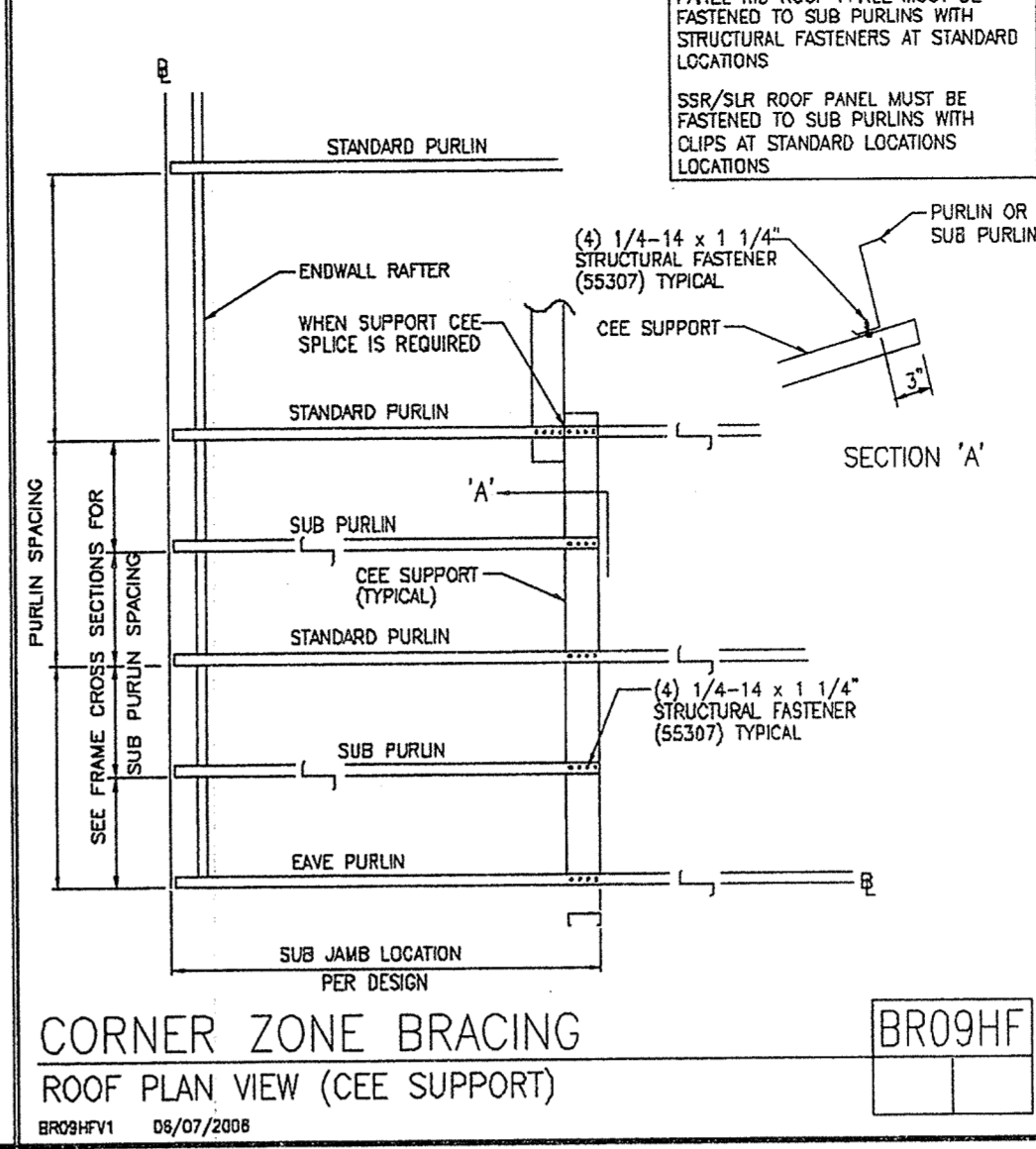
TYPICAL FLANGE BRACE CONNECTIONS
CONTINUOUS PURLIN LAP SHOWN, CONTINUOUS GIRT AND SIMPLE PURLIN AND GIRT SIMILAR.
BR06BD7 R 11/10/2005



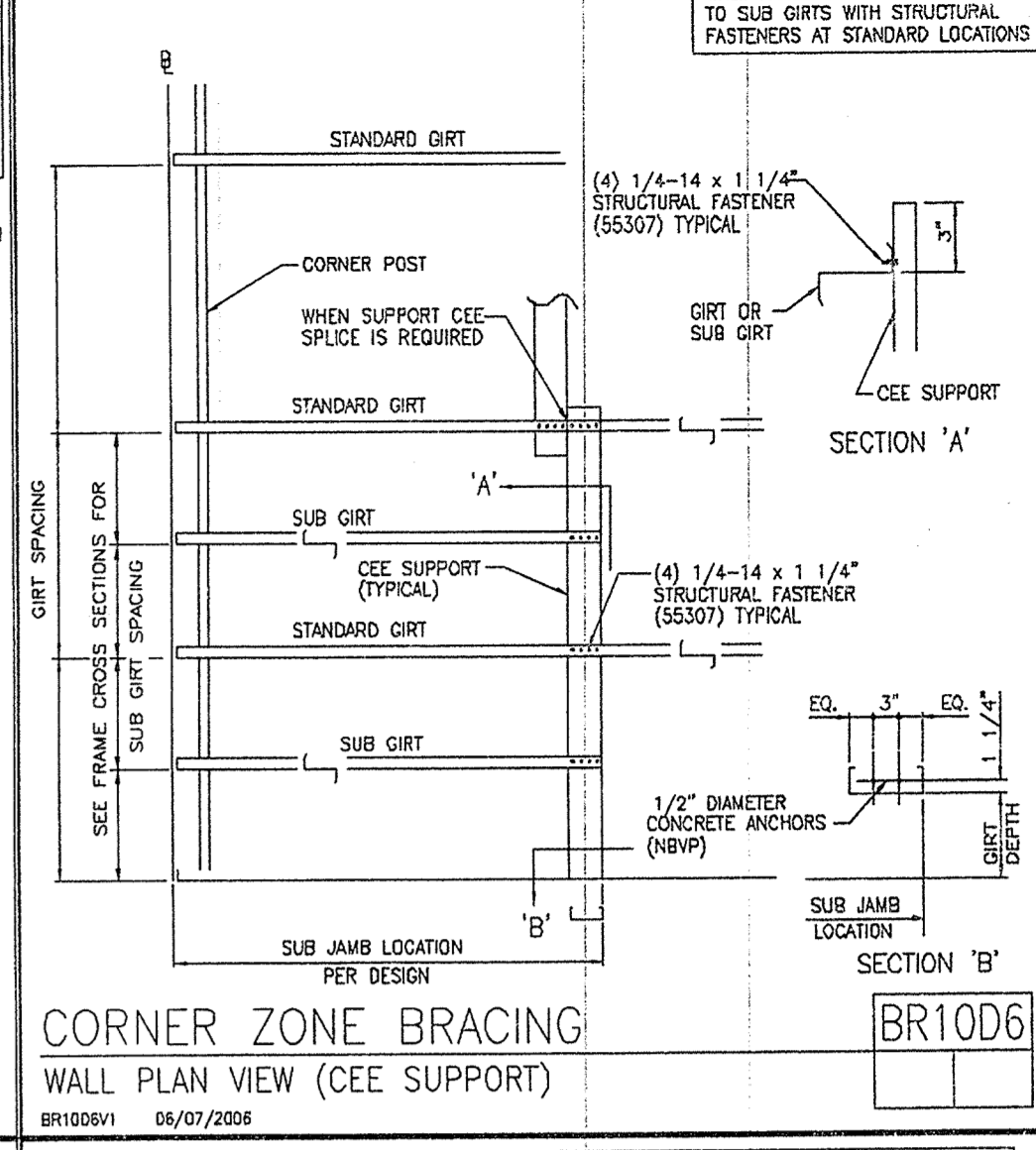
OPTIONAL ERECTION SAG ANGLES
SAG ANGLE INSTALLATION
BR09A4 R 05/01/2003



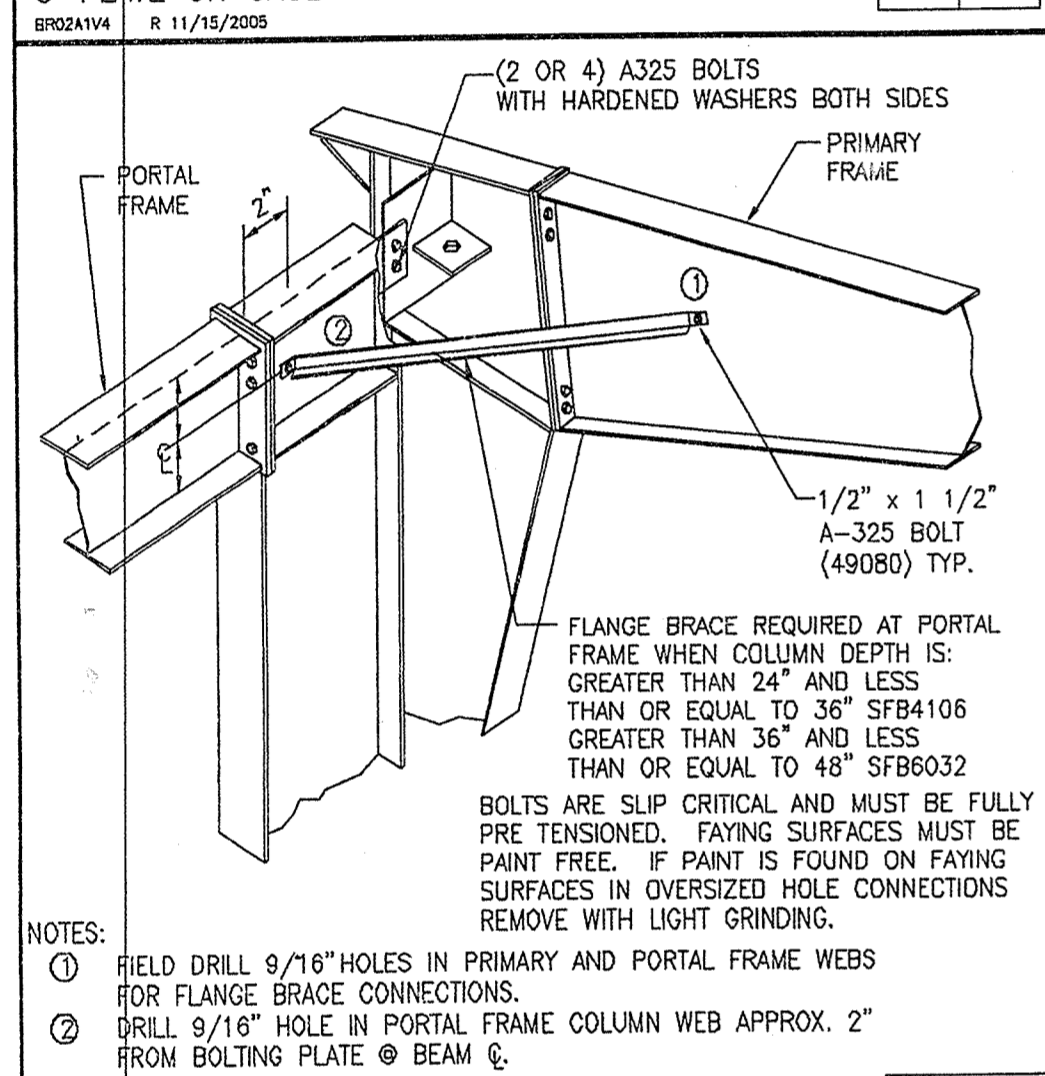
SAG ANGLES X-ING
8 1/2" & 11 1/2" PURLINS (REQ'D. PER DESIGN)
BR09A5 R 05/01/2003



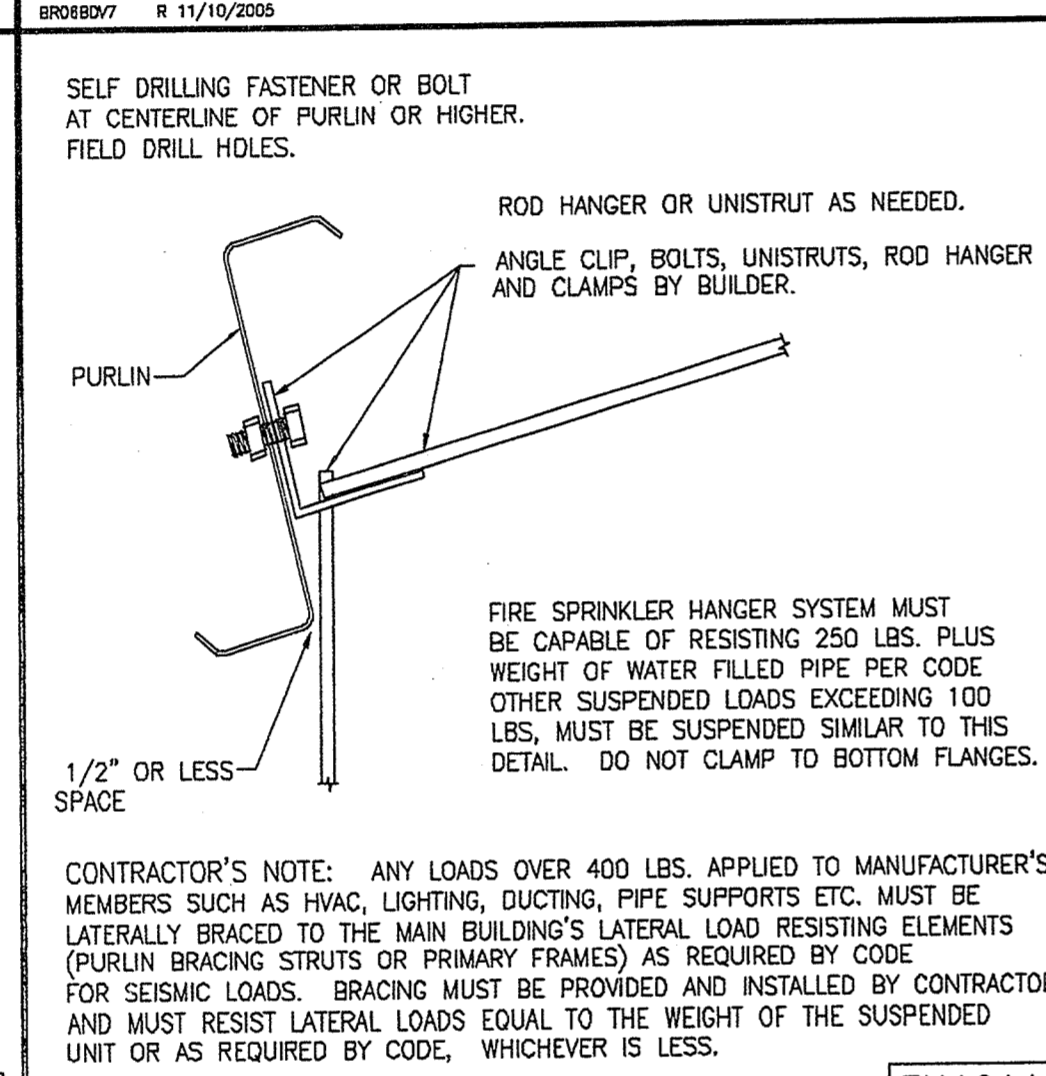
CORNER ZONE BRACING
ROOF PLAN VIEW (CEE SUPPORT)
BR09HF1 R 05/01/2005



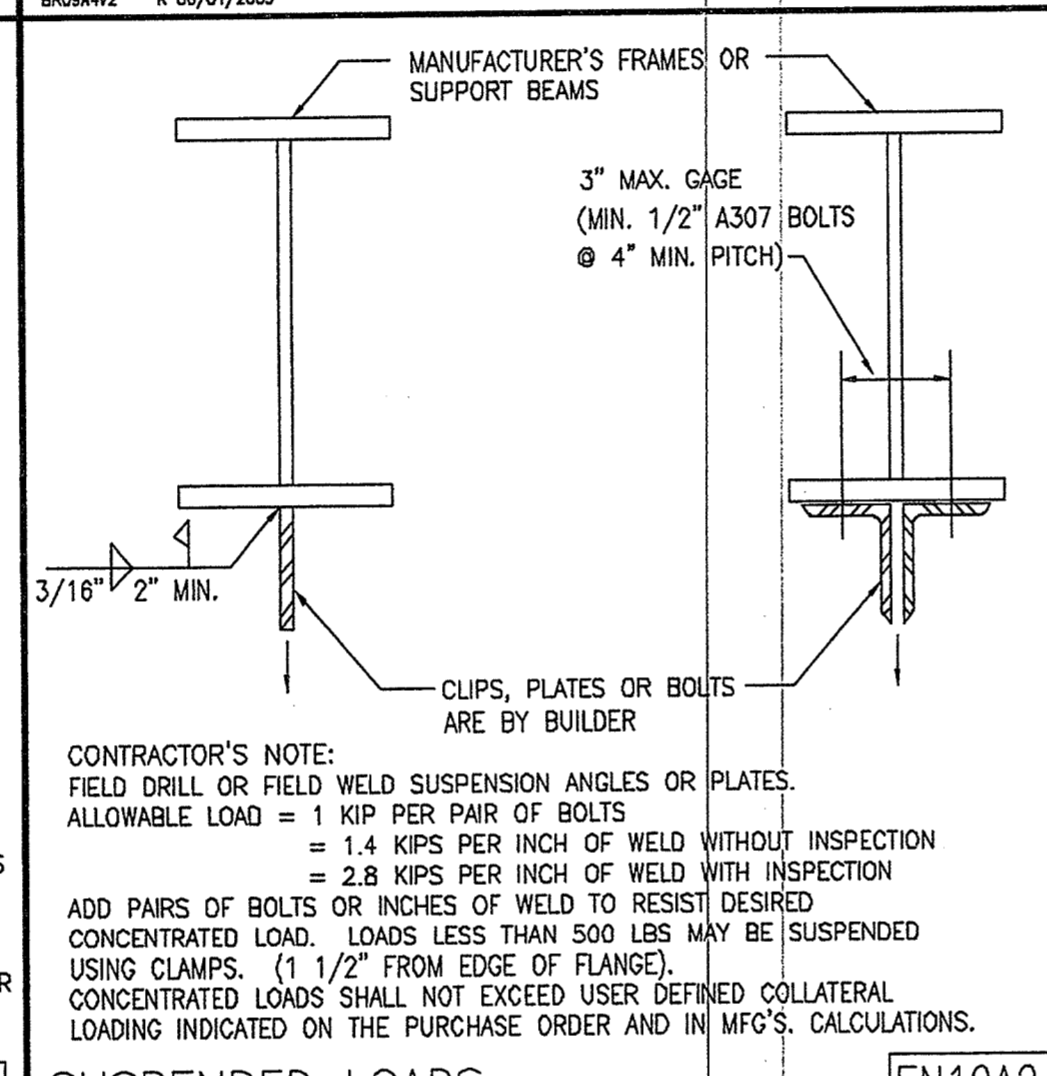
CORNER ZONE BRACING
WALL PLAN VIEW (CEE SUPPORT)
BR10DB1 R 06/01/2005



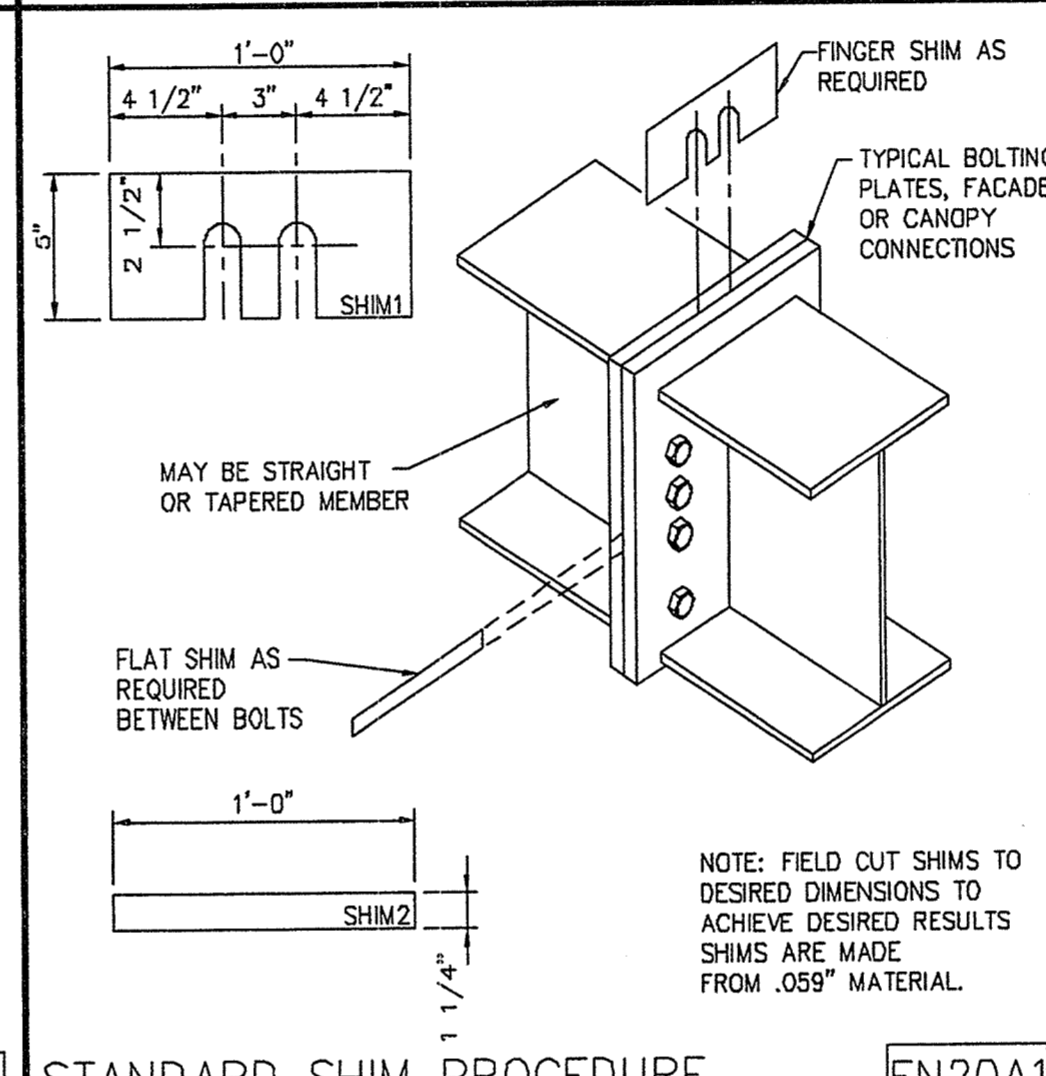
PORTAL FRAME DETAIL
CONNECTION TO FRAME
BR12F1 R 11/28/2007



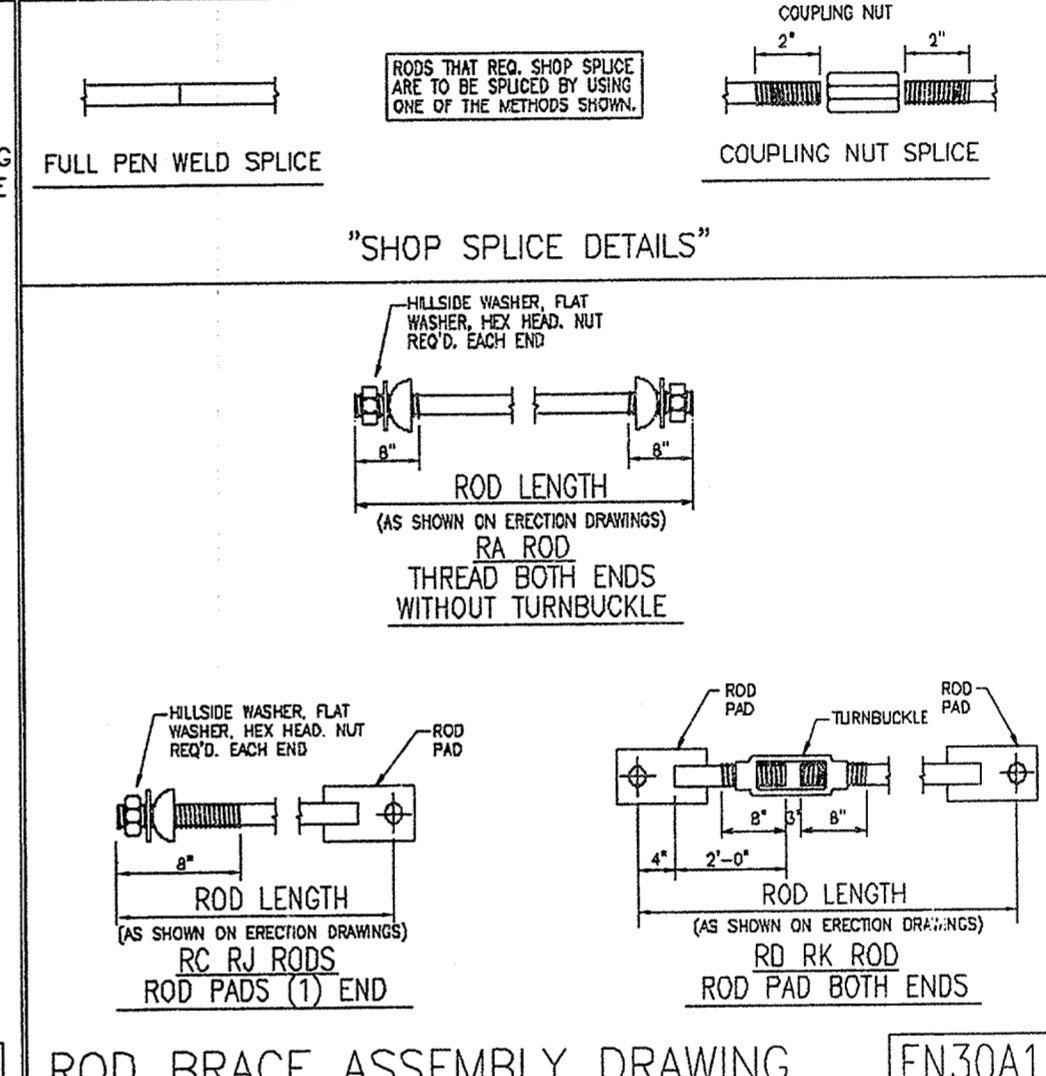
SUSPENDED LOADS
FROM PURLINS - 100 LB. LOADS OR GREATER
EN10A1 R 08/11/2005



SUSPENDED LOADS
FROM STRUCTURAL BEAMS
EN10A2 R 08/11/2005



STANDARD SHIM PROCEDURE
TYPICAL AT ANY BOLTED CONNECTION
EN20A1 R 06/31/98



ROD BRACE ASSEMBLY DRAWING
EN30A1 R 05/15/2005

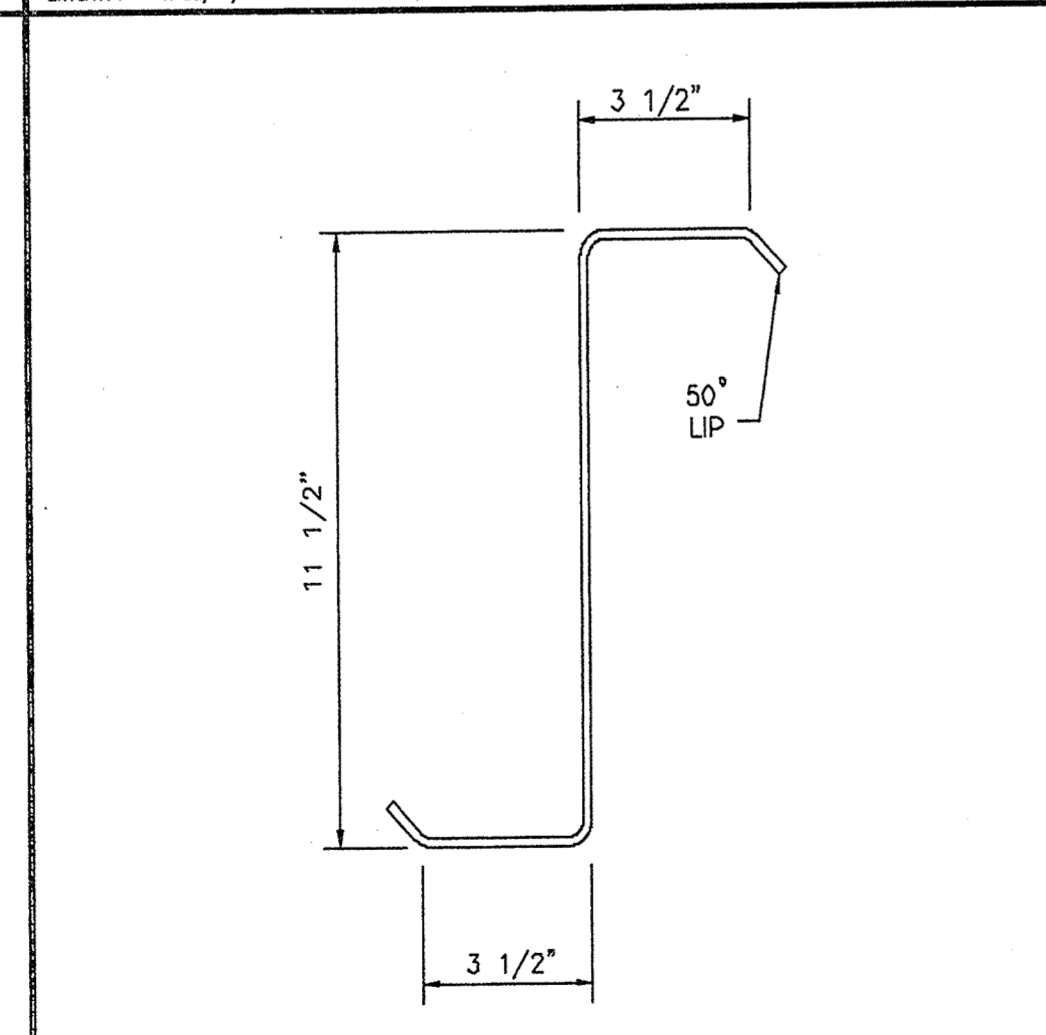
MARK NUMBER KEY
COMMON GENERATED MARK NUMBERS
EN50A1 R 11/04/2005

F = FEET G = GAGE
I = INCHES O = OPERATION
E = EIGHTHS C = FIN/COLOR
PANEL/COVERING
W I 3 1 1 7 2 6 1 K T D
* F F I I E G G D C C C
LENGTH CODE
INSULATION
I B 1 3 0 1 0 3 6 0 3 0 W V
* * F F I I I I I I E C C
LENGTH WIDTH THK CODE
SECONDARY (STANDARD)
O I G 1 9 1 1 1 4 1 7
* * * F F I I E G G
LENGTH CODE
SECONDARY (SPECIAL)
O 3 R A 2 5 1 0
I E * F F I I
LENGTH CODE
ROD BRACING
O 3 R A 2 5 1 0
I E * F F I I
DIA LENGTH
CX*** = COLUMN (PLATE)
CG*** = COLUMN (GAGE)
WC*** = COLUMN (HOTROLL)
RB*** = RAFTER (PLATE)
BG*** = RAFTER (GAGE)
WR*** = RAFTER (HOTROLL)
TR*** = TRUSS RAFTER
IC*** = INTERIOR COLUMN
PC*** = PIPE COLUMN
TC*** = TUBE COLUMN
EP*** = ENDPOST (PLATE)
EG*** = ENDPOST (GAGE)
CB*** = CANOPY (PLATE)
DCCB*** = CANOPY (GAGE)
CBX*** = PIGGYBACK CANOPY

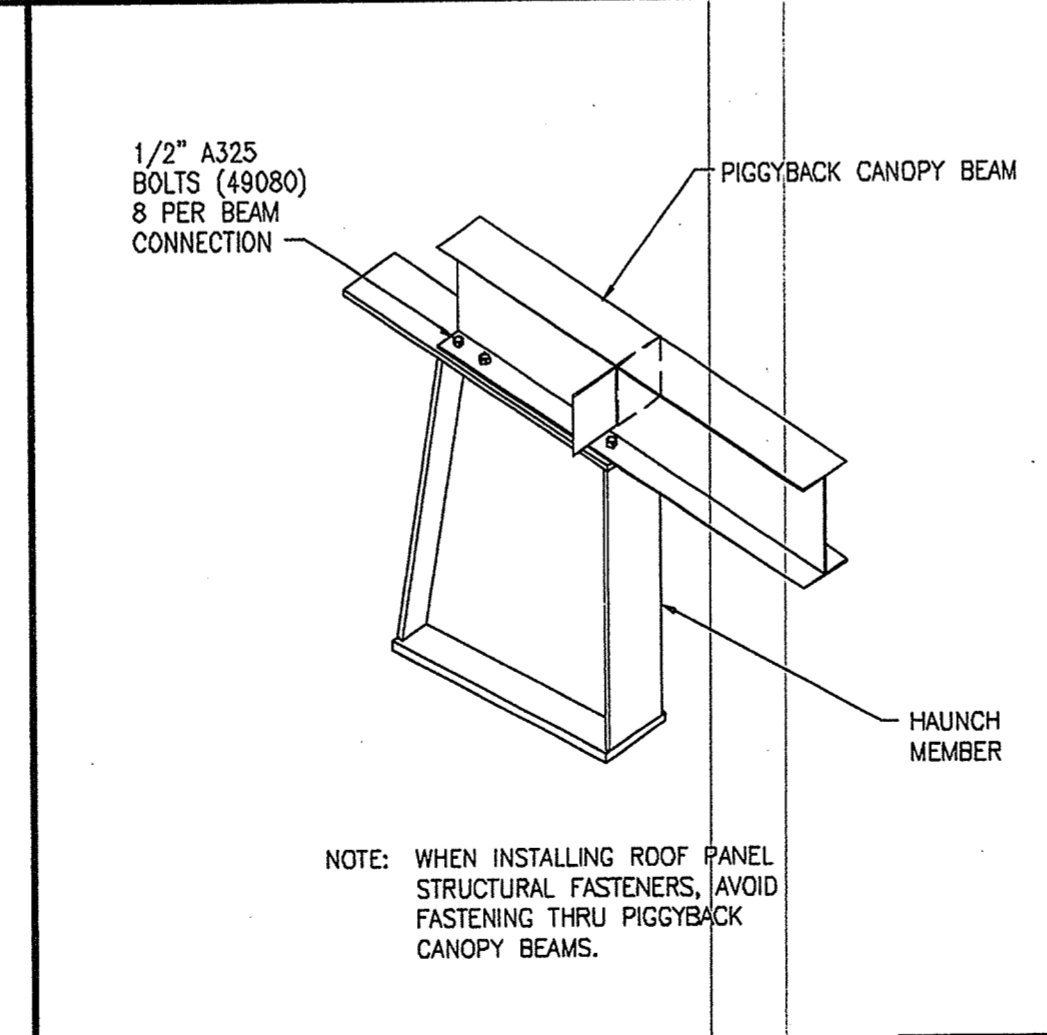
SECONDARY PUNCH PATTERNS
COMMON GENERATED MARK NUMBERS
EN51A1 R 03/15/2005

| GAGE | EIGHTHS | INCHES | LENGTH | FEET | CATEGORY | PUNCH PATTERN |
|------|---------|--------|--------|------|---|---------------|
| 1 | R | 1 | B | 3 | BAY NUMBER | |
| 1 | R | 1 | B | 3 | ROOF/WALL NUMBER | |
| 1 | R | 1 | B | 3 | BUILDING SHAPE | |
| 1 | R | 1 | B | 3 | THE BAY/BUNDLE CODE IDENTIFIES THE BUILDING ROOF/WALL PLANE AND BAY | |

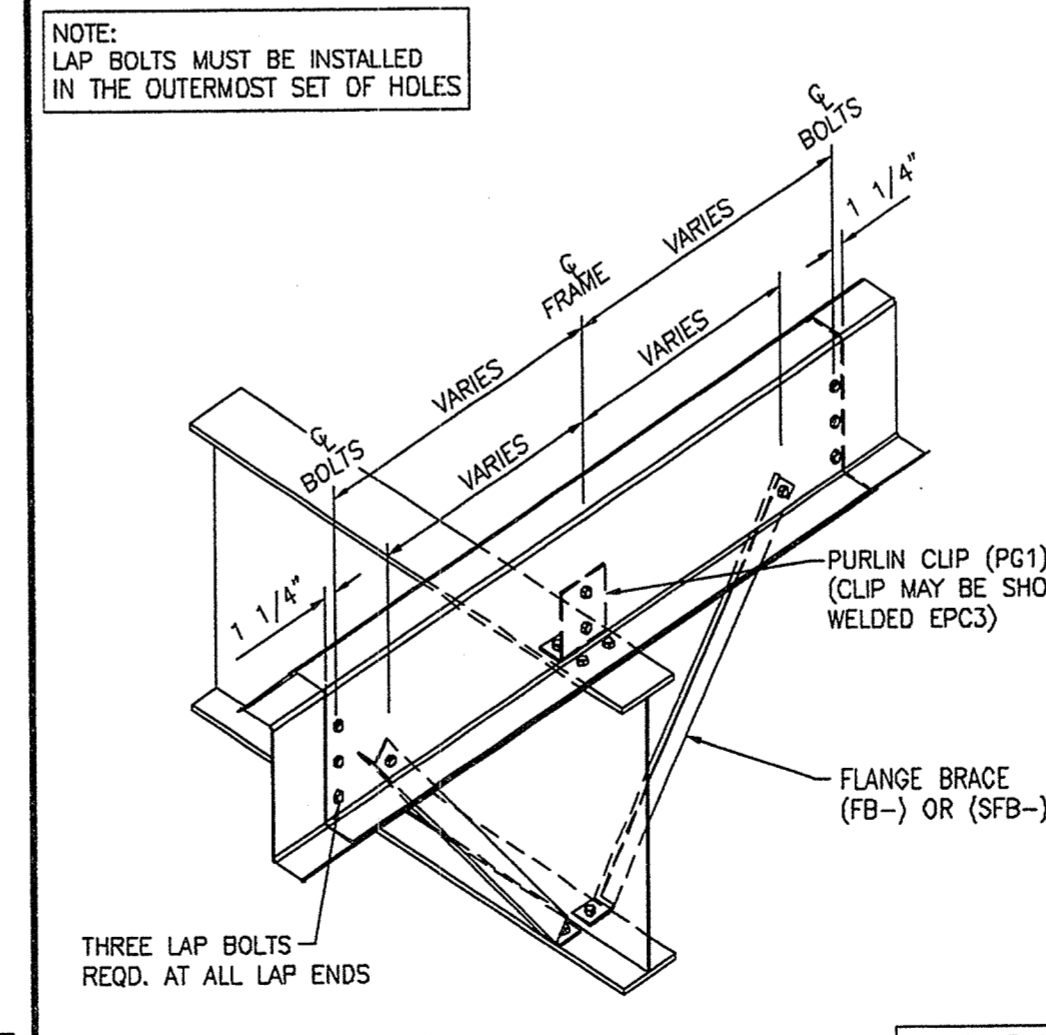
| LAP | END BAY | 1' END BAY | INTERIOR BAY | MEMBER DEPTHS |
|-------|---------|------------|--------------|-------------------------|
| 1'-0" | 20 | 30 | 40 | 6 1/2", 8 1/2" |
| 1'-6" | 21 | 31 | 41 | 6 1/2", 8 1/2" |
| 2'-0" | 22 | 32 | 42 | 6 1/2", 8 1/2", 11 1/2" |
| 3'-0" | 24 | 34 | 44 | 6 1/2", 8 1/2", 11 1/2" |
| 4'-0" | 26 | 36 | 46 | 6 1/2", 8 1/2", 11 1/2" |



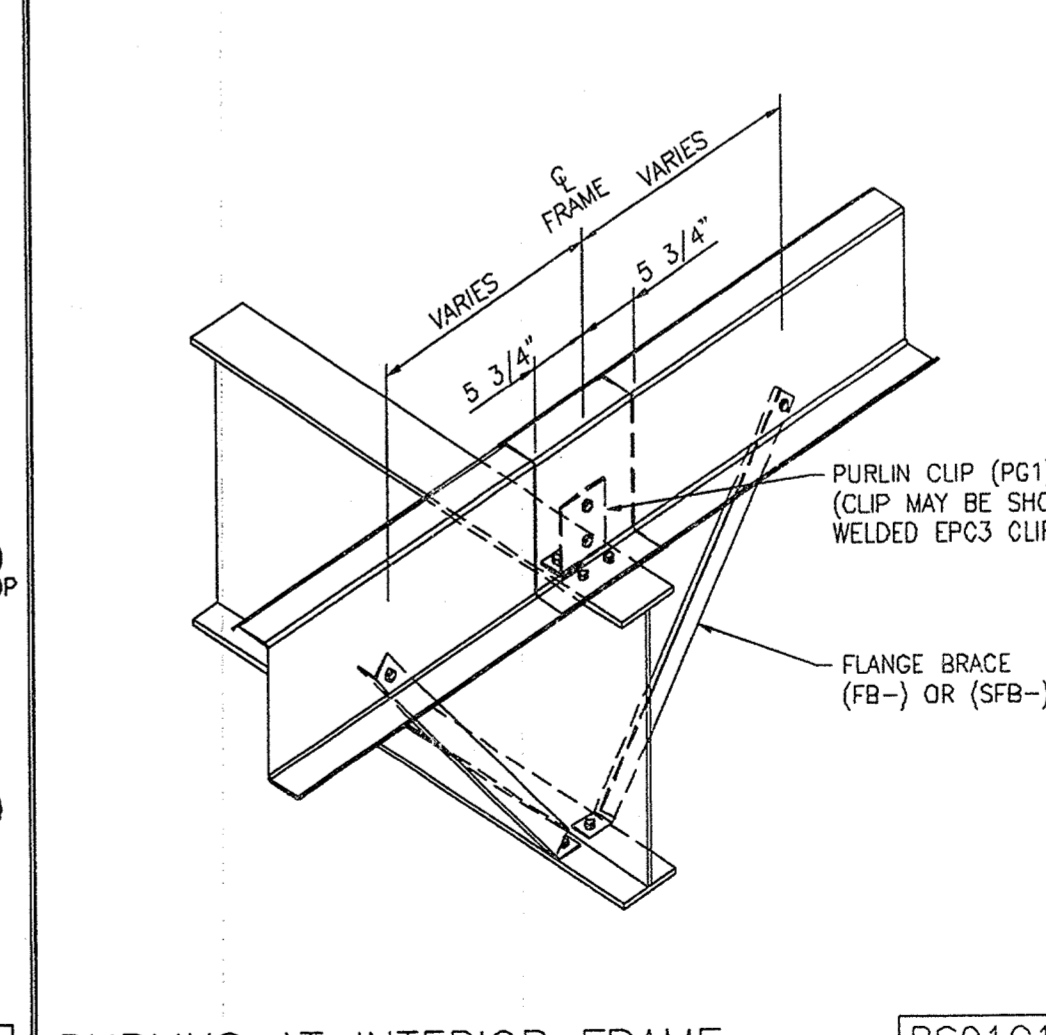
11 1/2" PURLIN
EN53C1 R 09/01/2001



PIGGYBACK CANOPY BEAM
ATTACHMENT TO INTERIOR FRAME
PF20C1 R 02/08/2005



PURLINS AT INTERIOR FRAME
11 1/2" CONTINUOUS PURLINS
RS01D1 R 06/25/2007



PURLINS AT INTERIOR FRAME
11 1/2" SIMPLE PURLINS
RS01G1 R 06/25/2007

STEPHEN L. CARP
REGISTERED PROFESSIONAL ENGINEER
STATE OF MISSISSIPPI
PE 11895
4/23/07

THE VP ENGINEER'S SEAL APPLIES ONLY TO THE WORK PRODUCT OF VP AND DESIGN AND PERFORMANCE REQUIREMENTS SPECIFIED BY VP. THE VP ENGINEER'S SEAL DOES NOT APPLY TO THE PERFORMANCE OR DESIGN OF ANY OTHER PRODUCT OR COMPONENT FURNISHED BY VP EXCEPT TO ANY DESIGN OR PERFORMANCE REQUIREMENTS SPECIFIED BY VP.

THIS DRAWING, INCLUDING THE INFORMATION HEREON, REMAINS THE PROPERTY OF VP BUILDINGS. IT IS PROVIDED SOLELY FOR THE BUILDING DESCRIBED IN THE APPLICABLE PURCHASE ORDER AND SHALL NOT BE MODIFIED, REPRODUCED OR USED FOR ANY OTHER PURPOSE WITHOUT PRIOR WRITTEN APPROVAL OF VP BUILDINGS.
THE GENERAL CONTRACTOR AND/OR ERECTOR IS SOLELY RESPONSIBLE FOR ACCURATE, GOOD QUALITY WORKMANSHIP IN ERECTING THIS BUILDING IN CONFORMANCE WITH THIS DRAWING, DETAILS REFERENCED IN THIS DRAWING, ALL APPLICABLE VP ERECTION GUIDES, AND INDUSTRY STANDARDS PERTAINING TO PROPER ERECTION, INCLUDING THE CORRECT USE OF TEMPORARY BRACING.

VP Buildings
3200 Players Club Circle Memphis TN 38125

| REV | DATE | BY | DESCRIPTION |
|-----|------|----|-------------|
| | | | |

BUILDING SED'S

| | |
|--------------|--|
| BUILDER | Broadmoor, LLC |
| CUSTOMER | John F. Stennis Space Center |
| LOCATION | Stennis Space Center, Mississippi |
| PROJECT | Riverine and Combatant Craft Operations Facility |
| BUILDERS PO# | |

VP BUILDINGS
VARCO PRUDEN
A Nucor Company
UAC VERSION: 7.1f

| | |
|---------------|--------------|
| JOBNO | 03-28914 EP1 |
| DATE | 16 APR 09 |
| DRAWING CHECK | PCD |
| PAGE | 01 OF 01 |