

DAMMON
ENGINEERING, INC

CHIEF ENGINEER
EMMETT
DAMMON, P.E.
CHIEF ARCHITECT
ROBERT
MILTSE

1095 FLORIDA AVENUE
SUDELL, LA. 70458
OFFICE: 985-649-5632
FAX: 985-641-5950

WEBSITE:
WWW.DAMMONENGINEERING.COM
EMAIL:
DAMMONENG@BELLSOUTH.NET

ARCHITECTURE
ENGINEERING
STUDIES
PLANNING
INVESTIGATION
EXPERT WITNESS

**NEW RIVERINE
AND COMBATANT
CRAFT OPERATIONS
FACILITY**

JOHN C. STENNIS
SPACE CENTER
MISSISSIPPI

**BUILDING 2440
ELEVATION**

REV:

SCALE AS NOTED

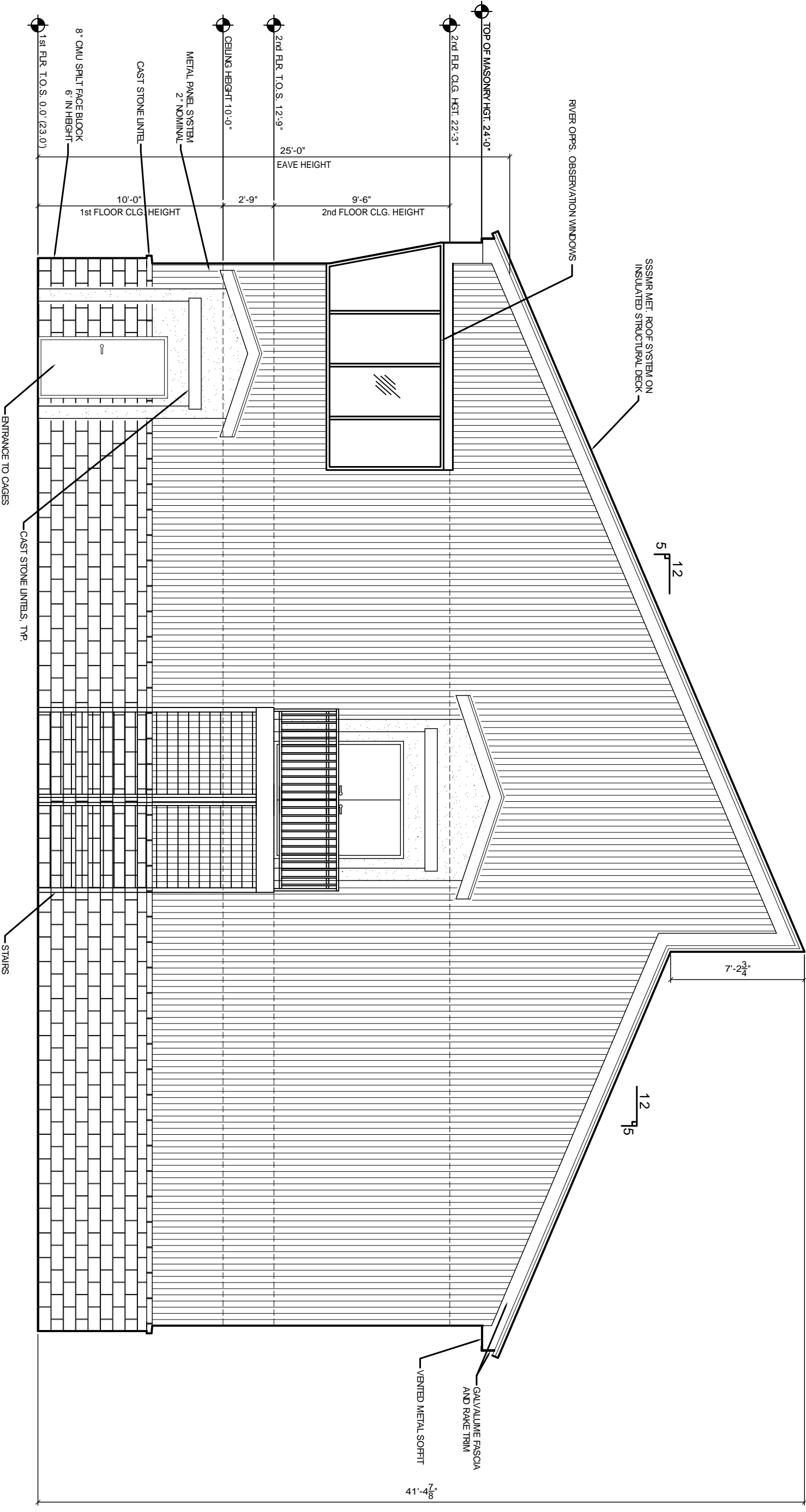
JOB#: 1986

DATE: 8-14-08

SHEET

A1.4

OF



BUILDING 2440 ELEVATION

SCALE 3/8" = 1'-0"