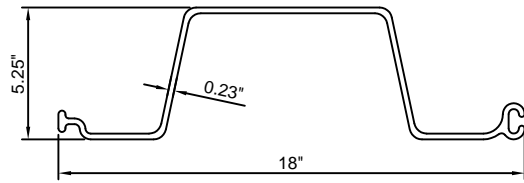


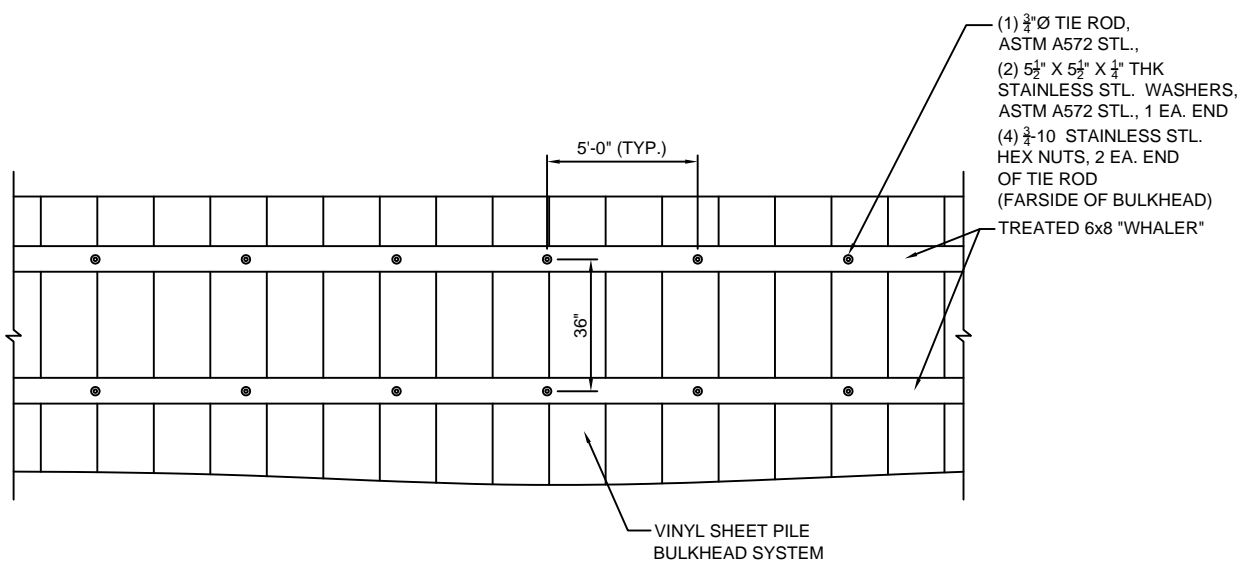
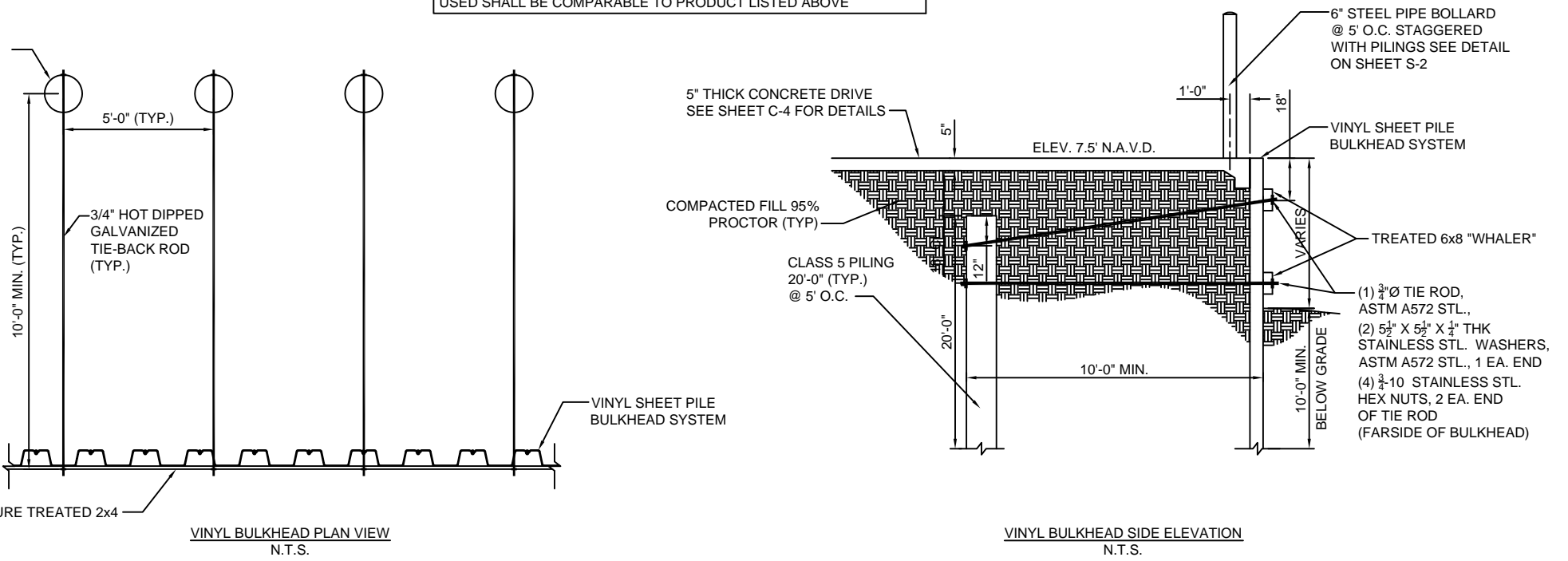
EVERLAST SYNTHETIC PRODUCTS  
ESP 2.1 VINYL SHEET PILE



**TECHNICAL DATA**

STRENGTH RATING (M)	LBS-FT/FT	2,125	MODULUS OF ELASTICITY (E)	PSI	380,000
ALLOWABLE SHEAR (V)	LBS/FT	1,960	IMPACT STRENGTH	LBS-IN	900
THICKNESS (T)	INCHES	0.23	SECTION DEPTH	INCHES	5.25
SECTION MODULUS (Z)	IN <sup>3</sup> /FT	7.7	SECTION WIDTH	INCHES	18
MOMENT OF INERTIA (I)	IN <sup>4</sup> /FT	20.3	UV STABILIZED		YES
ULTIMATE TENSILE STRESS	PSI	6,300	STANDARD	SHEETS/ BUNDLE	15
CREEP LIMITED STRESS	PSI	4,000	PACKAGING		

NOTE: VERIFY BULKHEAD MATERIALS MFG. WITH OWNER. MATERIALS USED SHALL BE COMPARABLE TO PRODUCT LISTED ABOVE



**BULKHEAD DETAILS**  
N.T.S.