

ACCESS CONTROL SYMBOL LEGEND

--- = SECURITY ACCESS CABLING

[DP] = SECURITY DOOR POSITION SWITCH DPS-W FOR METAL DOORS AND DPS-W FOR WOOD DOORS.

[PR] = GLASS RAO READER 6120, EXCEPT GLASS DOORS GET GLASS RIO MULLION MOUNTED READER 6100 (BOTH 12V)

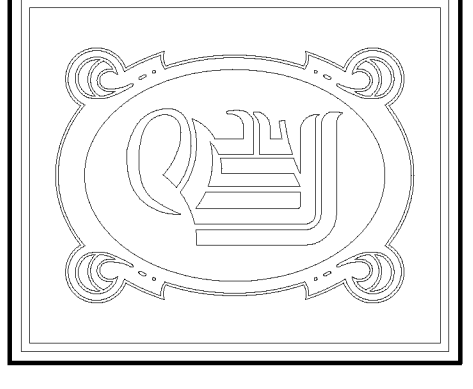
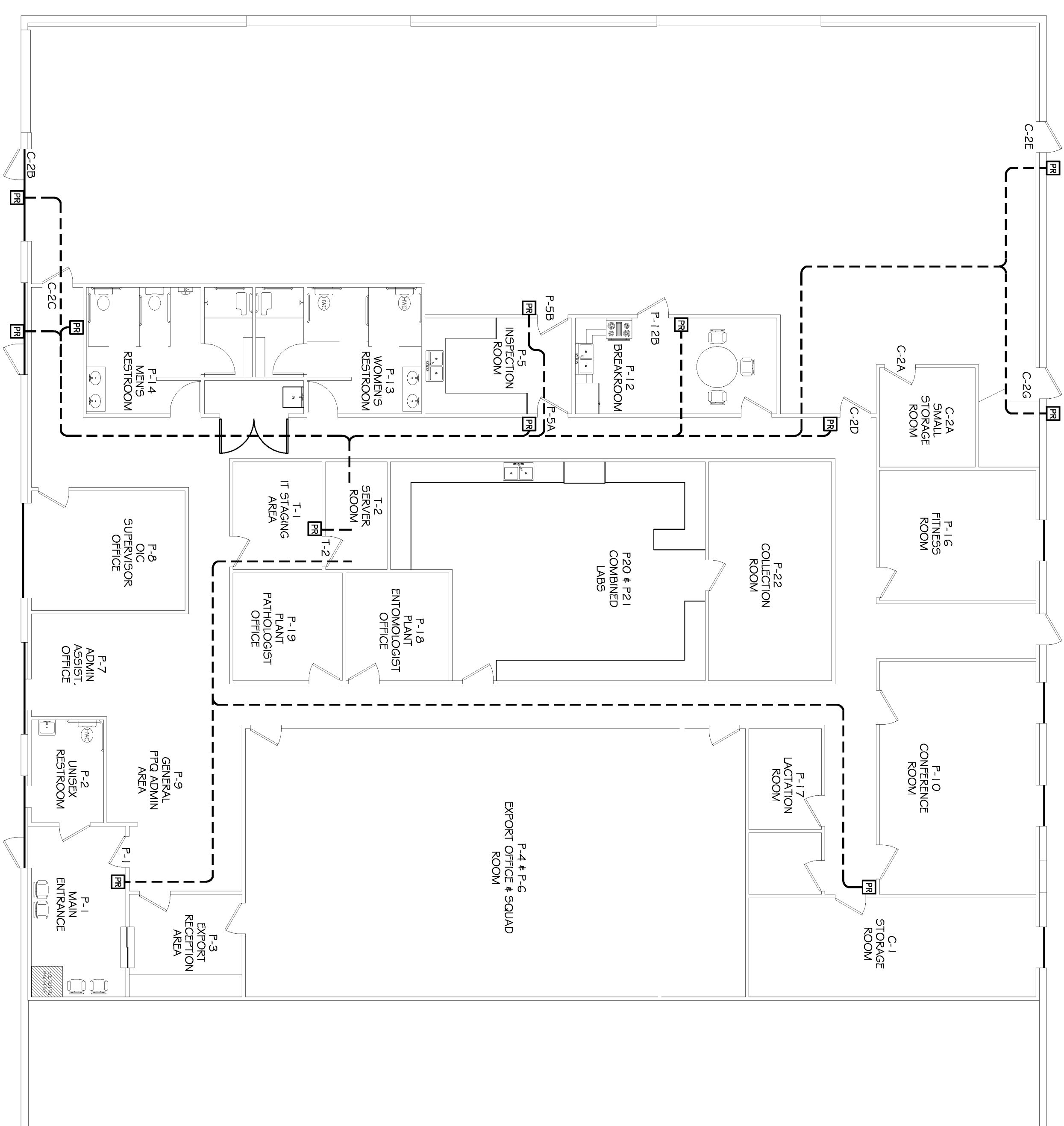
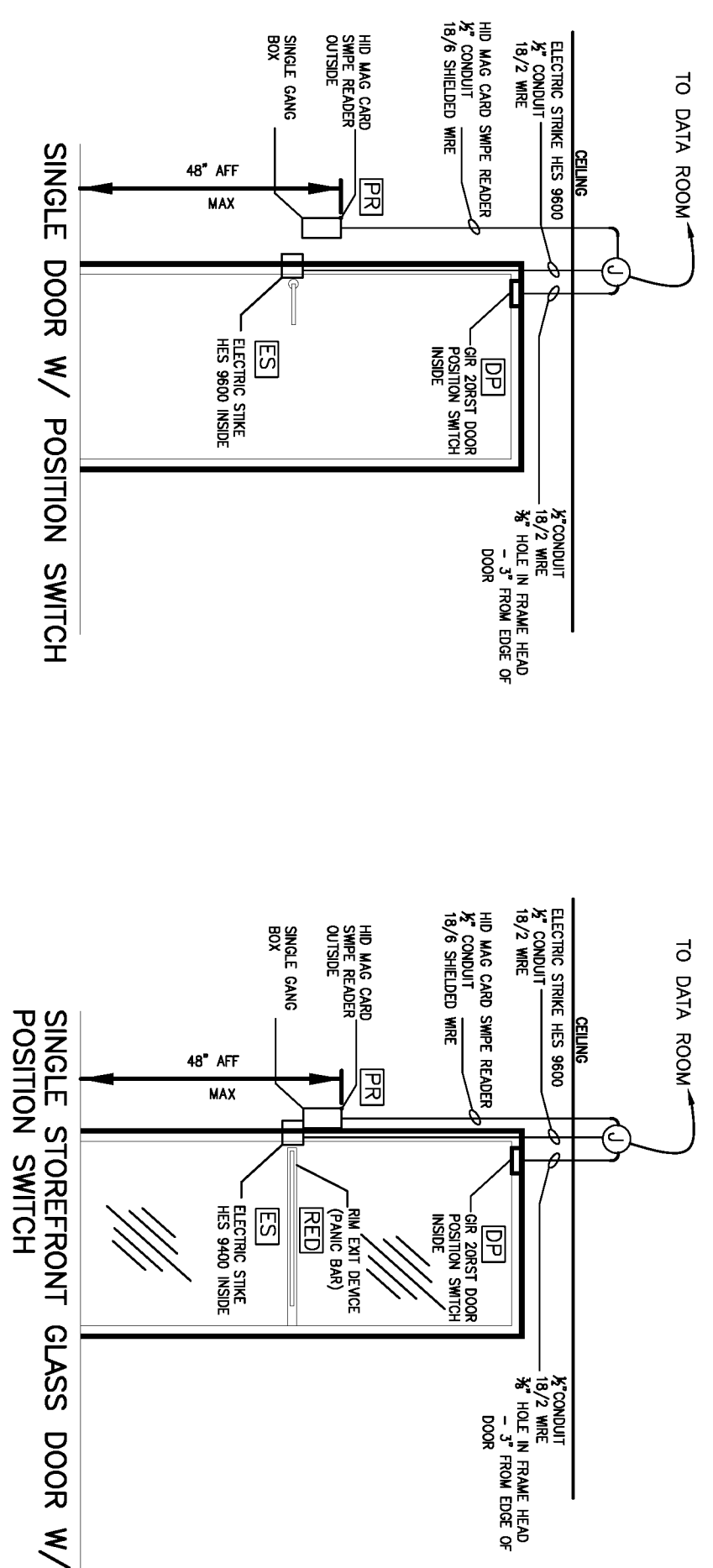
[RED] = RM EXIT DEVICE (PANIC BAR)

[ES] = ELECTRIC STRIKE H.E.S. 9600 & H.E.S. 9400

① = JUNCTION BOX

FOR SYSTEMS INTEGRATION CONTACT:

WAYNE HILLARD
 IDN-ACME INC.
 1504 JUSTIN RD.
 METARIE, LA 70001
 (800) 682-2263



DAMMON ENGINEERING, INC.

CHIEF ENGINEER
 EMMETT DAMMON, P.E.

CHIEF ARCHITECT
 ROBERT WILTSE

554 OLD SPANISH TRAIL
 SLIDELL, LA, 70458
 OFFICE: 985-649-5632
 FAX: 985-641-5950

WEBSITE:
 WWW.DAMMONENGINEERING.COM
 EMAIL:
 DAMMONENG@BELLFLOWER.NET

ARCHITECTURE
 ENGINEERING
 STUDIES
 PLANNING
 INVESTIGATION
 EXPERT WITNESSES

US DEPARTMENT OF AGRICULTURE

APHIS FACILITY
 924 KENNER AVE.
 KENNER
 LOUISIANA
 70062

SECURITY ACCESS

REV#3- 4/27/2012

SCALE: AS NOTED

JOB#:

DATE: 1/15/2012

SHEET

SEC-1

DF