

DAMMON
ENGINEERING, INC.

CHIEF ENGINEER
EMMETT
DAMMON, P.E.
CHIEF ARCHITECT
ROBERT
WILTSE

1095 FLORIDA AVENUE
SLIDELL, LA. 70458
OFFICE: 985-649-5632
FAX: 985-641-5950

WEBSITE:
WWW.DAMMONENGINEERING.COM
EMAIL:
DAMMONENG@BELLSOUTH.NET

ARCHITECTURE
ENGINEERING
STUDIES
PLANNING
INVESTIGATION
EXPERT WITNESS

SOUTHEAST
LOUISIANA
VETERANS
WALKING TRAIL

SITE
PLAN

REV:

SCALE: AS NOTED

JOB#:

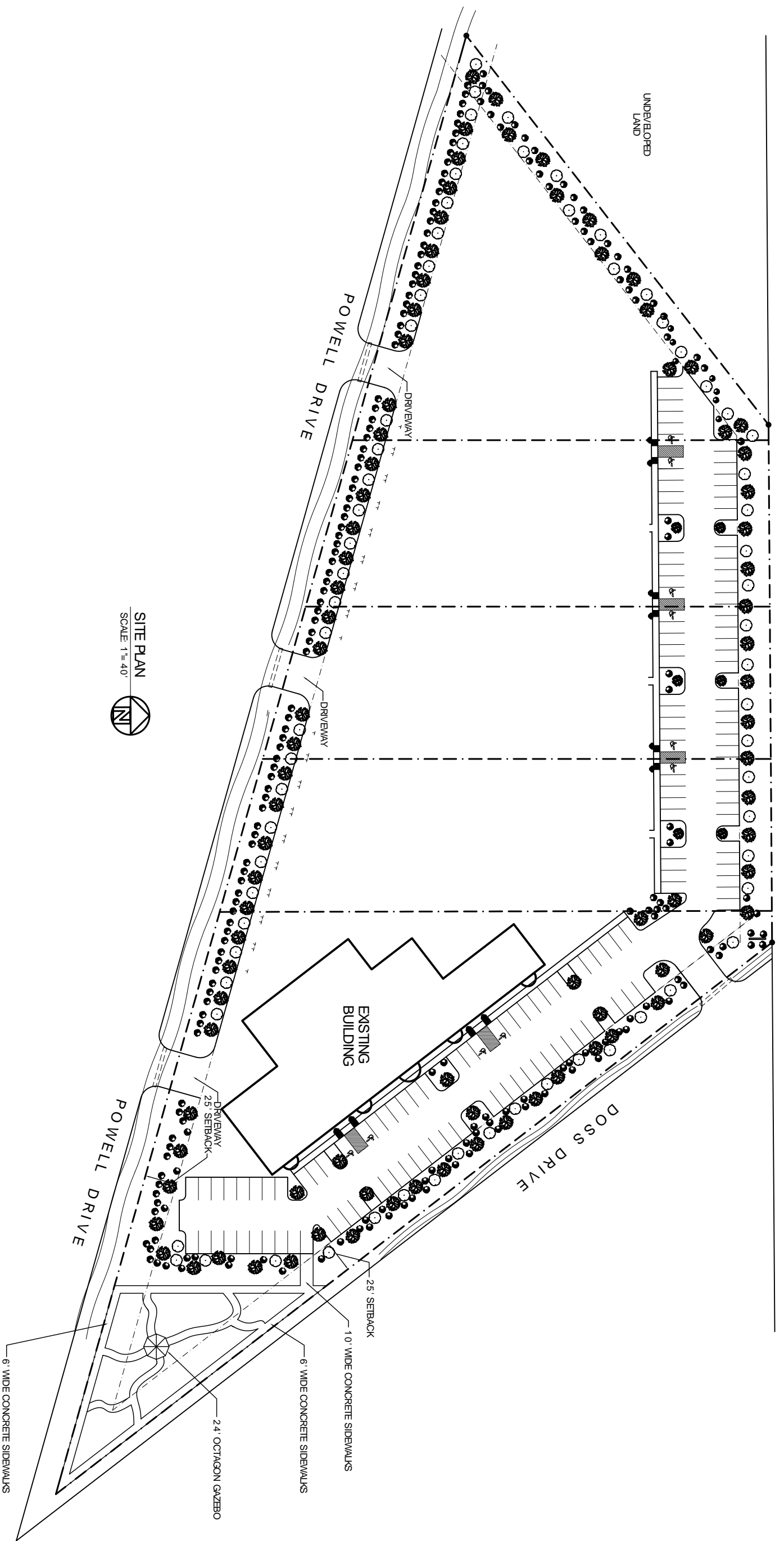
DATE: 06-14-10

SHEET

C-1

OF

U.S. INTERSTATE HWY. 12



SITE PLAN
SCALE 1"=40'