

DAMMON ENGINEERING, INC.

CHIEF ENGINEER
EMMETT DAMMON, P.E.

CHIEF ARCHITECT
ROBERT WILTSE

1095 FLORIDA AVENUE
SUDELL, LA. 70458
OFFICE: 985-649-5832
FAX: 985-641-5950

WEBSITE:
WWW.DAMMONENGINEERING.COM
EMAIL:
DAMMONENG@BELLSOUTH.NET

ARCHITECTURE
ENGINEERING
STUDIES
PLANNING
INVESTIGATION
EXPERT WITNESS

SOUTHEAST
LOUISIANA
VETERANS
HEALTH CARE
SYSTEM

SITE
PLAN

REV:

SCALE: AS NOTED

JOB#: 2009

DATE: 02-03-09

SHEET 2

C-2

OF 14

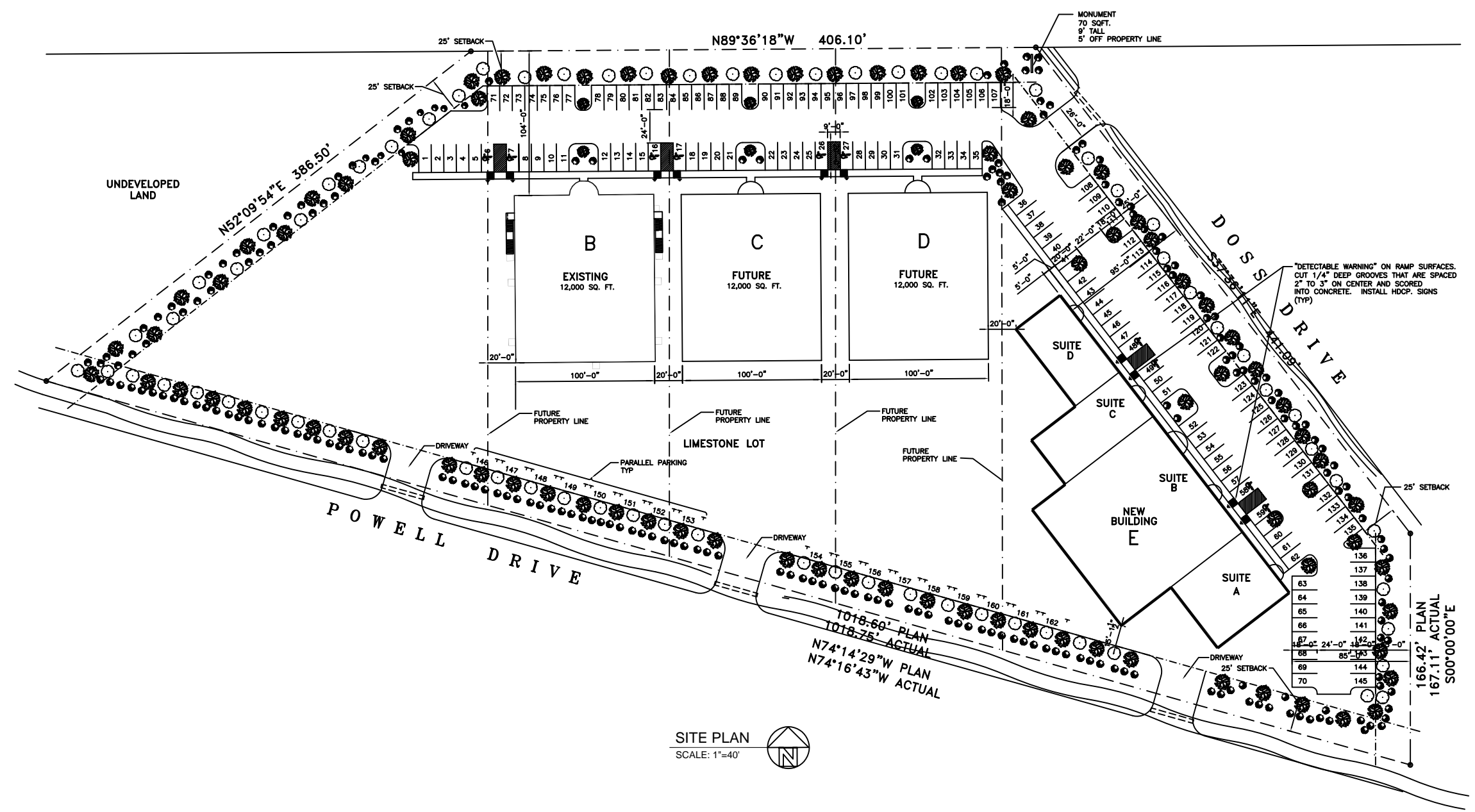
PARKING REQUIREMENTS:

- 1 SPACE PER 350 SQ.FT. OF OFFICE SPACE
- 1 SPACE PER 750 SQ.FT. OF WAREHOUSE SPACE
- TOTAL REQUIRED=160
- TOTAL PROVIDED=162

LEGEND:

- PROPERTY LINE
- SETBACK LINE
- NEW BUILDING
- CLASS "A" TREE-MINIMUM OF 10' TO 12' HIGH. CALIPER OF 2-1/2" MEASURED AT 1-1/2 FT ABOVE THE GROUND
- CLASS "B" TREE-MINIMUM OF 8' TO 10' HIGH. CALIPER OF 1-1/2" MEASURED AT 1-1/2 FT ABOVE THE GROUND
- SHRUB

U.S. INTERSTATE HWY. 12



SITE PLAN
SCALE: 1"=40'

T018.60° PLAN
T018.75° ACTUAL
N74°14'29"W PLAN
N74°16'43"W ACTUAL

"DETECTABLE WARNING" ON RAMP SURFACES.
CUT 1/4" DEEP GROOVES THAT ARE SPACED
2" TO 3" ON CENTER AND SCORED
INTO CONCRETE. INSTALL HDCP. SIGNS
(TYP)