

DAMMON
ENGINEERING, INC.

CHIEF ENGINEER
EMMETT
DAMMON, P.E.

CHIEF ARCHITECT
ROBERT
WILTSE

1095 FLORIDA AVENUE
SLIDELL, LA. 70458
OFFICE: 985-649-5832
FAX: 985-641-5950

WEBSITE:
WWW.DAMMONENGINEERING.COM

EMAIL:
DAMMONENG@BELLSOUTH.NET

ARCHITECTURE

ENGINEERING

STUDIES

PLANNING

INVESTIGATION

EXPERT WITNESS

SOUTHEAST
LOUISIANA
VETERAN'S
HEALTH CARE
SYSTEM

UNIT B
LIGHTING PLAN

REV:

SCALE: AS NOTED

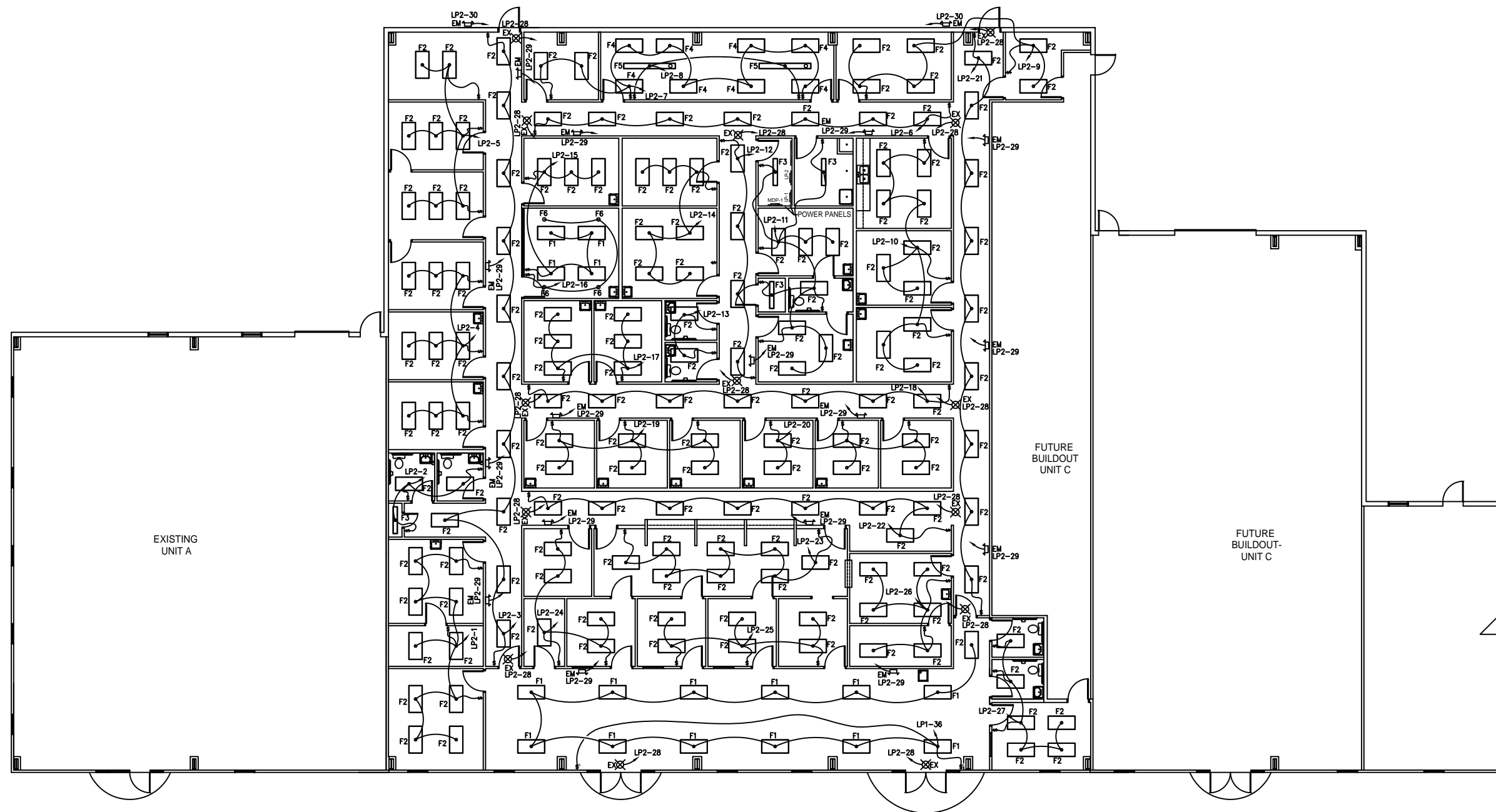
JOB#: 2009

DATE: 02-03-09

SHEET 12

E-2

OF 14



ELECTRICAL LIGHTING PLAN - UNIT B

SCALE: 1/8"=1'



LEGEND

- F1 LITHONIA 2PM-G-3-32-MVOLT-GEB10IS
- F2 LITHONIA 2GT8-3-32-A12-MVOLT-GEB10IS
- F3 LITHONIA C-2-32-MVOLT-GEB10IS
- F4 LITHONIA 2AV-G-3-32-MDR-MVOLT-GEB10IS
- F5 LITHONIA 10CRM6-2-WHR-8FT-R8-120-GEB10-STC-F1/24
- F6 LITHONIA 6" RECESSED
- EM LITHONIA ELM2
- EX LITHONIA LQM
- LP** POWER PANEL AND CIRCUIT NUMBER
- \$ SWITCH
- \$3 3-WAY SWITCH