

DAMMON ENGINEERING, INC.

CHIEF ENGINEER
EMMETT
DAMMON, P.E.

CHIEF ARCHITECT
ROBERT
WILTSE

1095 FLORIDA AVENUE
SLIDELL, LA. 70458
OFFICE: 985-649-5832
FAX: 985-641-5950

WEBSITE:
WWW.DAMMONENGINEERING.COM

EMAIL:
DAMMONENG@BELLSOUTH.NET

ARCHITECTURE

ENGINEERING

STUDIES

PLANNING

INVESTIGATION

EXPERT WITNESS

SOUTHEAST
LOUISIANA
VETERAN'S
HEALTH CARE
SYSTEM

SUITE C
REFLECTED
CEILING PLAN

REV:

SCALE: AS NOTED

JOB#: 2011

DATE: 04-06-09

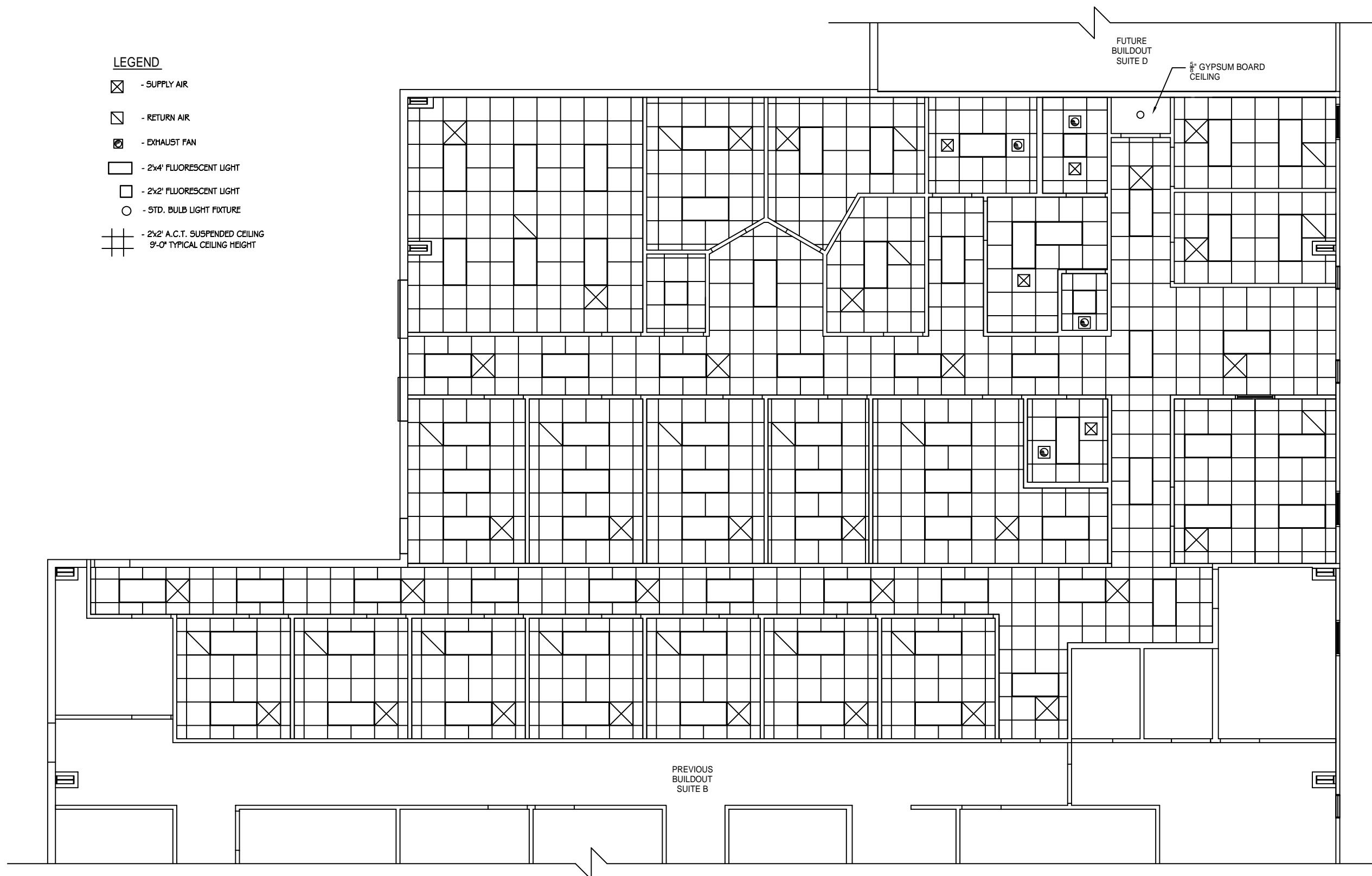
SHEET 6

A-3

OF 14

LEGEND

- ☒ - SUPPLY AIR
- ☑ - RETURN AIR
- ⊗ - EXHAUST FAN
- ▭ - 2x4' FLUORESCENT LIGHT
- ◻ - 2x2' FLUORESCENT LIGHT
- - STD. BULB LIGHT FIXTURE
- ⊞ - 2x2' A.C.T. SUSPENDED CEILING
9'-0" TYPICAL CEILING HEIGHT



REFLECTED CEILING PLAN - SUITE C
SCALE: 1/4"=1'

