

**DAMMON  
ENGINEERING, INC.**

CHIEF ENGINEER  
EMMETT  
DAMMON, P.E.

CHIEF ARCHITECT  
ROBERT  
WILTSE

1095 FLORIDA AVENUE  
SLIDELL, LA. 70458  
OFFICE: 985-649-5832  
FAX: 985-641-5950

WEBSITE:  
WWW.DAMMONENGINEERING.COM

EMAIL:  
DAMMONENG@BELLSOUTH.NET

ARCHITECTURE

ENGINEERING

STUDIES

PLANNING

INVESTIGATION

EXPERT WITNESS

SOUTHEAST  
LOUISIANA  
VETERAN'S  
HEALTH CARE  
SYSTEM

SUITE C  
REFLECTED  
CEILING PLAN

REV:

SCALE: AS NOTED

JOB#: 2011

DATE: 04-06-09

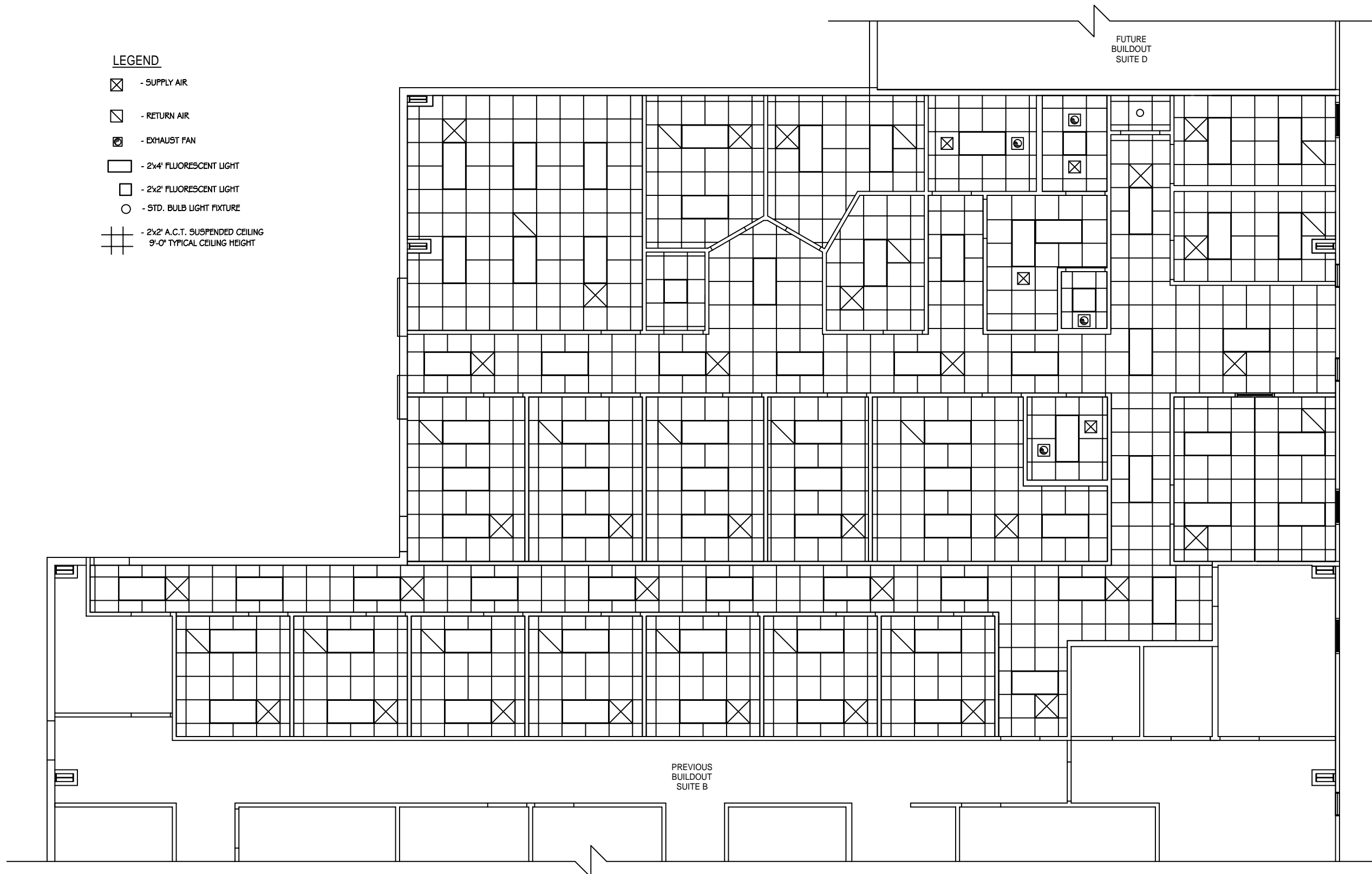
SHEET 6

**A-3**

OF 14

**LEGEND**

- ☒ - SUPPLY AIR
- ☑ - RETURN AIR
- ⊙ - EXHAUST FAN
- ▭ - 2x4' FLUORESCENT LIGHT
- ◻ - 2x2' FLUORESCENT LIGHT
- - STD. BULB LIGHT FIXTURE
- ⊞ - 2x2' A.C.T. SUSPENDED CEILING  
9'-0" TYPICAL CEILING HEIGHT



REFLECTED CEILING PLAN - SUITE C  
SCALE: 1/4"=1'

