

DAMMON
ENGINEERING, INC.

CHIEF ENGINEER
EMMETT
DAMMON, P.E.

CHIEF ARCHITECT
ROBERT
WILTSE

1095 FLORIDA AVENUE
SUDELL, LA. 70458
OFFICE: 985-649-5832
FAX: 985-641-5950

WEBSITE:
WWW.DAMMONENGINEERING.COM

EMAIL:
DAMMONENG@BELLSOUTH.NET

ARCHITECTURE

ENGINEERING

STUDIES

PLANNING

INVESTIGATION

EXPERT WITNESS

SOUTHEAST
LOUISIANA
VETERAN'S
HEALTH CARE
SYSTEM

SUITE C
ELECTRICAL
LIGHTING
PLAN

REV:

SCALE: AS NOTED

JOB#: 2011

DATE: 04-06-09

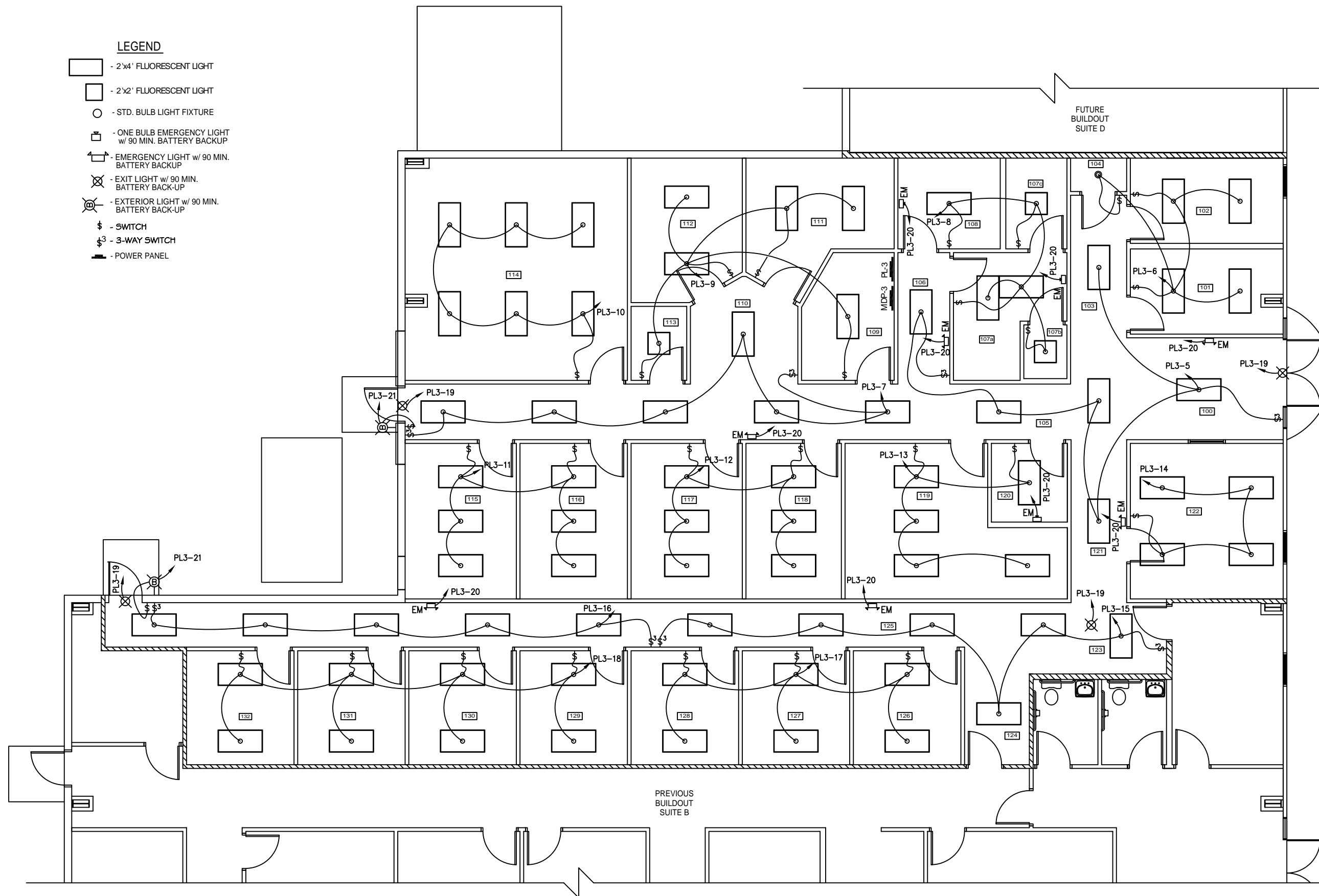
SHEET 12

E-2

OF 14

LEGEND

- 2x4' FLUORESCENT LIGHT
- 2x2' FLUORESCENT LIGHT
- STD. BULB LIGHT FIXTURE
- ONE BULB EMERGENCY LIGHT
w/ 90 MIN. BATTERY BACKUP
- EMERGENCY LIGHT w/ 90 MIN.
BATTERY BACKUP
- EXIT LIGHT w/ 90 MIN.
BATTERY BACK-UP
- EXTERIOR LIGHT w/ 90 MIN.
BATTERY BACK-UP
- SWITCH
- 3-WAY SWITCH
- POWER PANEL



ELECTRICAL LIGHTING PLAN-SUITE C

SCALE: 1/4"=1'

