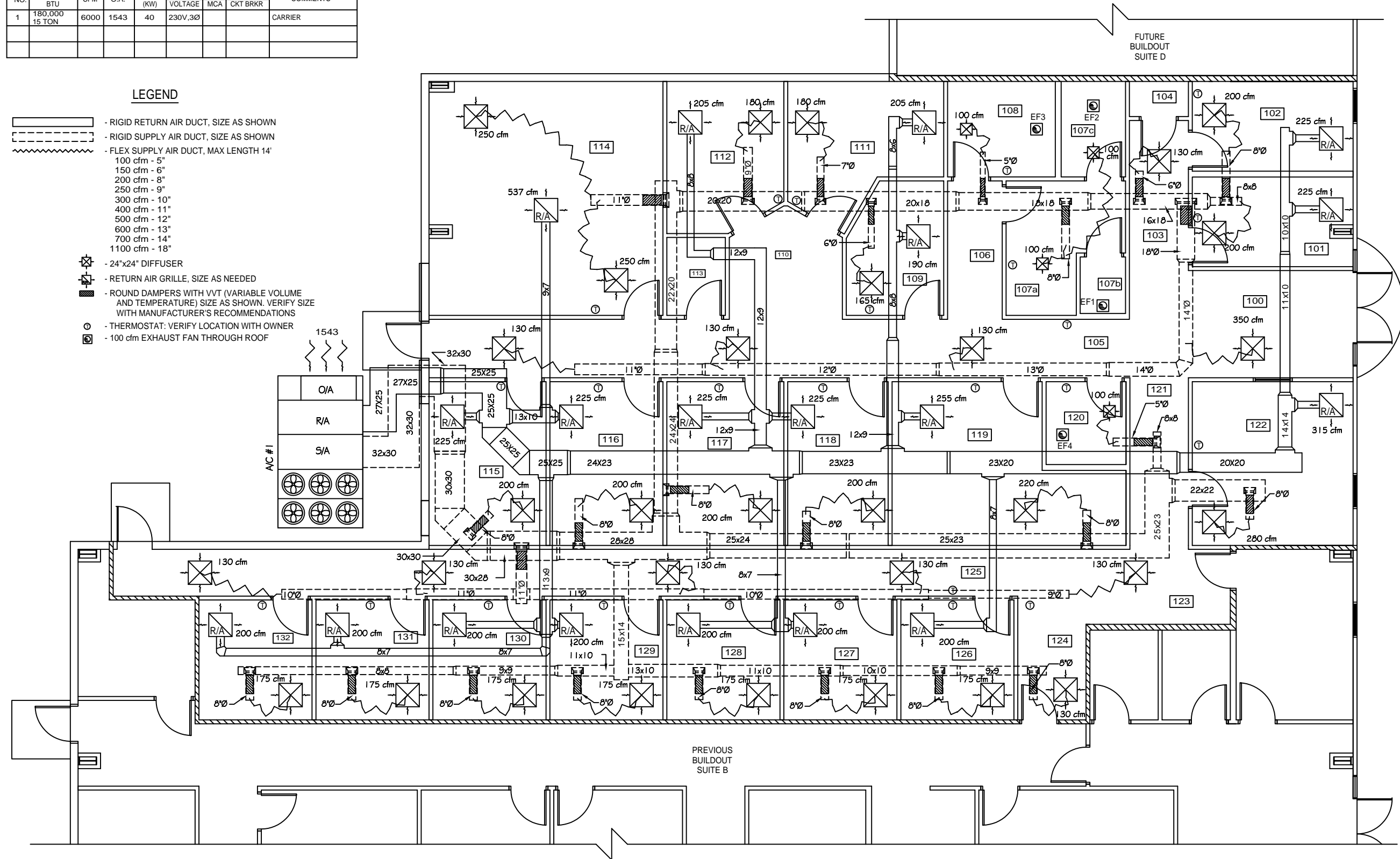


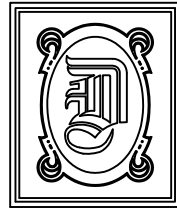
A/C UNIT SCHEDULE								
NO.	TOTAL BTU	CFM	O.A.	HEAT (KW)	ELECTRICAL		COMMENTS	
					VOLTAGE	MCA	CKT BRKR	
1	180,000 15 TON	6000	1543	40	230V, 3Ø			CARRIER

LEGEND

- RIGID RETURN AIR DUCT, SIZE AS SHOWN
- RIGID SUPPLY AIR DUCT, SIZE AS SHOWN
- FLEX SUPPLY AIR DUCT, MAX LENGTH 14'
- 100 cfm - 5"
- 150 cfm - 6"
- 200 cfm - 8"
- 250 cfm - 9"
- 300 cfm - 10"
- 400 cfm - 11"
- 500 cfm - 12"
- 600 cfm - 13"
- 700 cfm - 14"
- 1100 cfm - 18"
- 24"x24" DIFFUSER
- RETURN AIR GRILLE, SIZE AS NEEDED
- ROUND DAMPERS WITH VVT (VARIABLE VOLUME AND TEMPERATURE) SIZE AS SHOWN. VERIFY SIZE WITH MANUFACTURER'S RECOMMENDATIONS
- THERMOSTAT: VERIFY LOCATION WITH OWNER
- 100 cfm EXHAUST FAN THROUGH ROOF



MECHANICAL PLAN-SUITE C
SCALE: 1/4"=1'



DAMMON ENGINEERING, INC.

CHIEF ENGINEER
EMMETT DAMMON, P.E.

CHIEF ARCHITECT
ROBERT WILTSE

1095 FLORIDA AVENUE
SLIDELL, LA. 70458
OFFICE: 985-649-5832
FAX: 985-641-5950

WEBSITE:
WWW.DAMMONENGINEERING.COM

EMAIL:
DAMMONENG@BELLSOUTH.NET

- ARCHITECTURE
- ENGINEERING
- STUDIES
- PLANNING
- INVESTIGATION
- EXPERT WITNESS

SOUTHEAST
LOUISIANA
VETERAN'S
HEALTH CARE
SYSTEM

SUITE C
MECHANICAL
PLAN

REV:

SCALE: AS NOTED

JOB#: 2011

DATE: 04-06-09

SHEET 9

M-1

OF 14