

DAMMON
ENGINEERING, INC.

CHIEF ENGINEER
EMMETT
DAMMON, P.E.

CHIEF ARCHITECT
ROBERT
WILTSE

1095 FLORIDA AVENUE
SLIDELL, LA. 70458
OFFICE: 985-649-5832
FAX: 985-641-5950

WEBSITE:
WWW.DAMMONENGINEERING.COM

EMAIL:
DAMMONENG@BELLSOUTH.NET

ARCHITECTURE

ENGINEERING

STUDIES

PLANNING

INVESTIGATION

EXPERT WITNESS

SOUTHEAST
LOUISIANA
VETERAN'S
HEALTH CARE
SYSTEM

SUITE D
ELECTRICAL
LIGHTING
PLAN

REV:

SCALE: AS NOTED

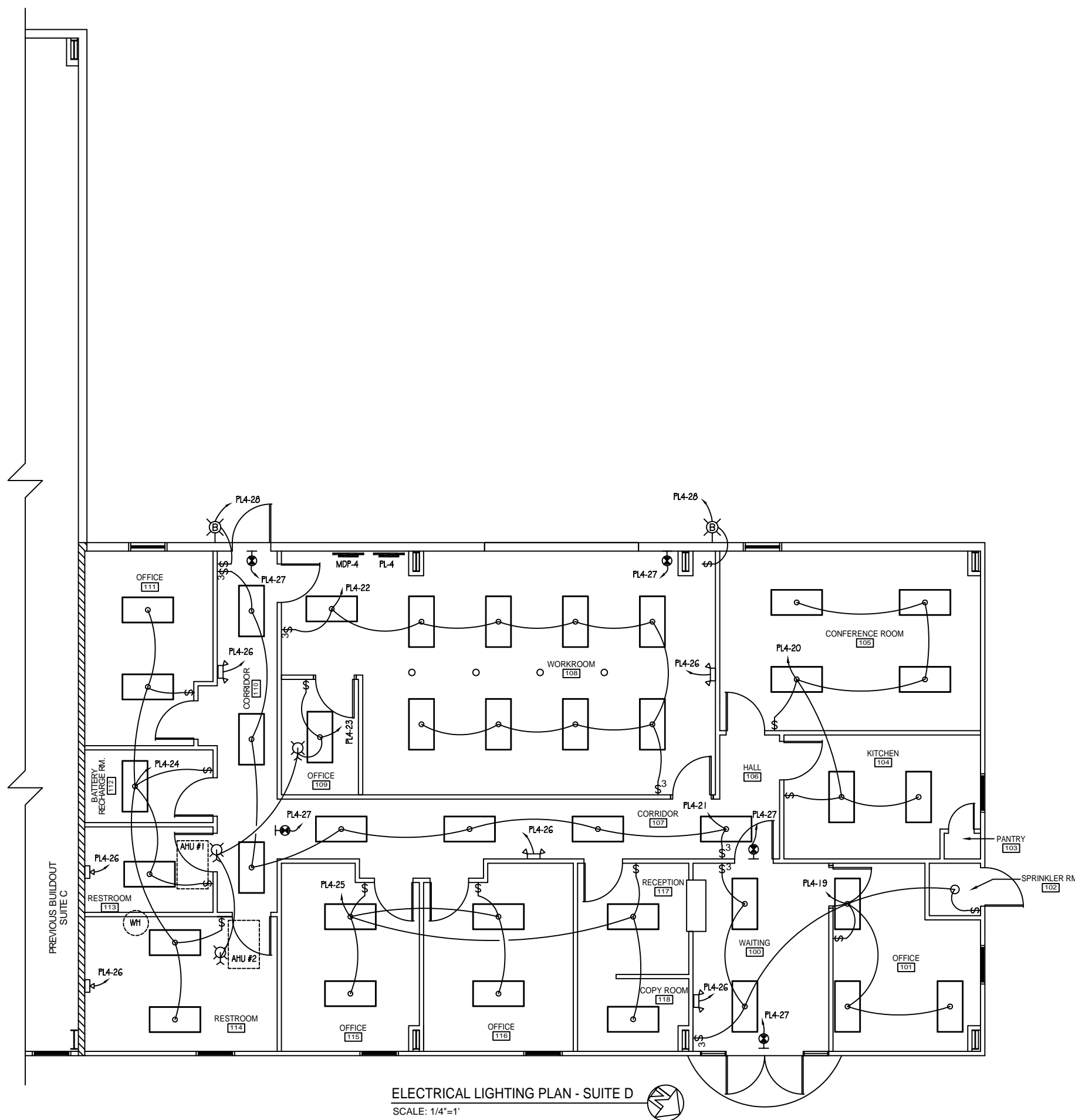
JOB#: 2012

DATE: 03-13-09

SHEET 8

E-2

OF 11



ELECTRICAL LIGHTING PLAN - SUITE D

SCALE: 1/4"=1'

LEGEND

- 2'x4' FLUORESCENT LIGHT
- CAN LIGHTS
- ONE BULB EMERGENCY LIGHT w/ 90 MIN. BATTERY BACKUP
- EMERGENCY LIGHT w/ 90 MIN. BATTERY BACKUP
- EXIT LIGHT w/ 90 MIN. BATTERY BACK-UP
- SWITCH
- 3-WAY SWITCH
- POWER PANEL