

**DAMMON ENGINEERING, INC.**

CHIEF ENGINEER  
EMMETT DAMMON, P.E.

CHIEF ARCHITECT  
ROBERT WILTSE

1095 FLORIDA AVENUE  
SLIDELL, LA. 70458  
OFFICE: 985-649-5832  
FAX: 985-641-5950

WEBSITE:  
WWW.DAMMONENGINEERING.COM

EMAIL:  
DAMMONENG@BELLSOUTH.NET

- ARCHITECTURE
- ENGINEERING
- STUDIES
- PLANNING
- INVESTIGATION
- EXPERT WITNESS

PATTERSON  
DENTAL  
OFFICE  
RENOVATION

NEW  
REFLECTED  
CEILING  
PLAN

REV:

SCALE: AS NOTED

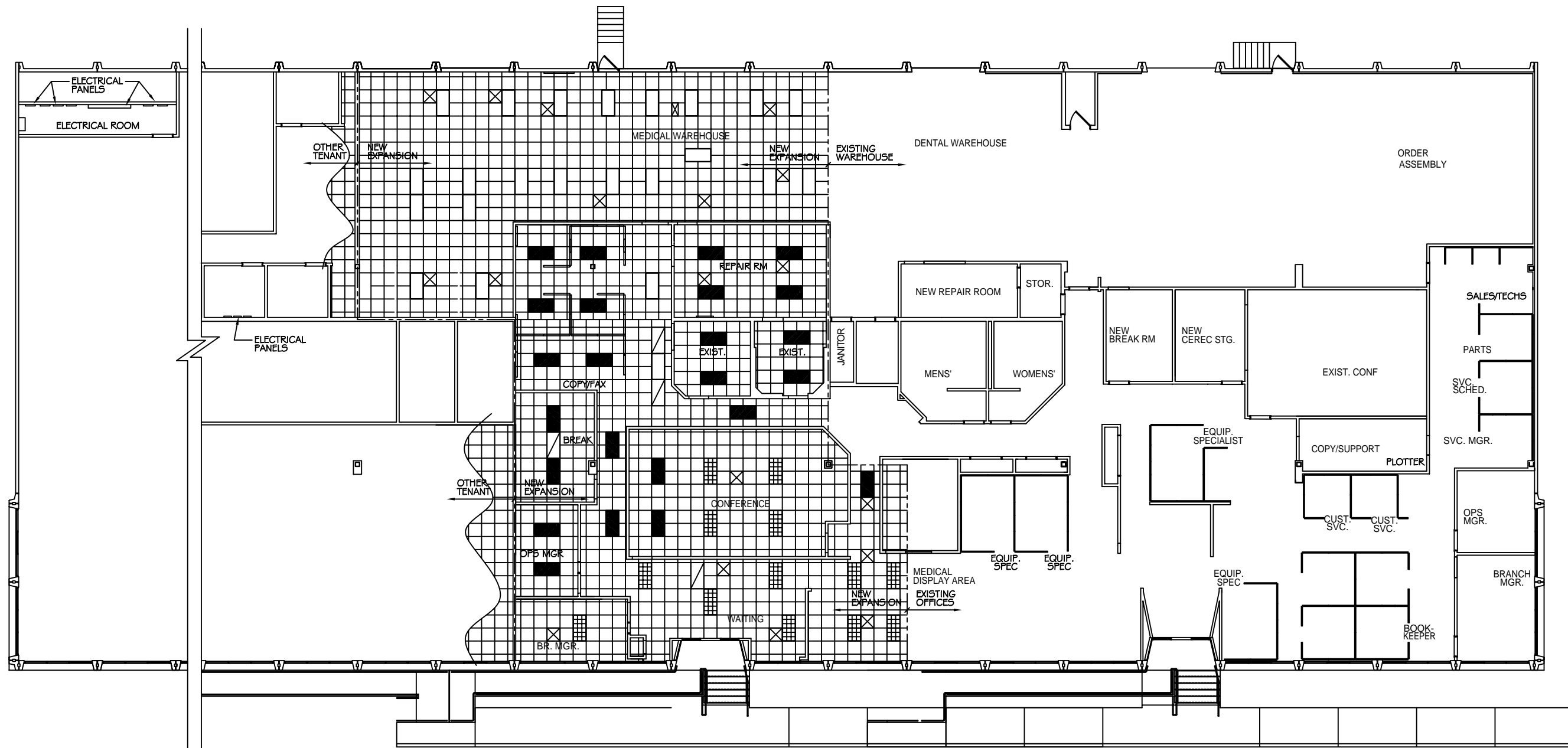
JOB#: 2076

DATE: 10-13-10

SHEET

**A-3**

OF



**NEW REFLECTED CEILING PLAN**

SCALE: 1/8" = 1'-0"

**LEGEND**

- |   |  |
|---|--|
| <ul style="list-style-type: none"> <li>■ - NEW OR RELOCATED 2x4' FLUORESCENT LIGHT FIXTURE</li> <li>▨ - NEW OR RELOCATED 2x4' PARABOLIC LIGHT FIXTURE</li> <li>⊗ - NEW OR RELOCATED HVAC SUPPLY AIR GRILLE</li> <li>⊘ - NEW OR RELOCATED HVAC RETURN AIR GRILLE</li> <li>□ - EXISTING CEILING GRID TO REMAIN</li> </ul> | <ul style="list-style-type: none"> <li>□ - EXISTING 2x4' FLUORESCENT LIGHT FIXTURE TO REMAIN</li> <li>▨ - EXISTING 2x4' PARABOLIC LIGHT FIXTURE TO REMAIN</li> <li>⊗ - EXISTING HVAC SUPPLY AIR GRILLE TO REMAIN</li> <li>⊘ - EXISTING HVAC RETURN AIR GRILLE TO REMAIN</li> <li>○ - INTERCOM SPEAKER</li> </ul> |
|---|--|

PRELIMINARY (NOT FOR CONSTRUCTION)