

**DAMMON
ENGINEERING, INC.**

CHIEF ENGINEER
EMMETT
DAMMON, P.E.

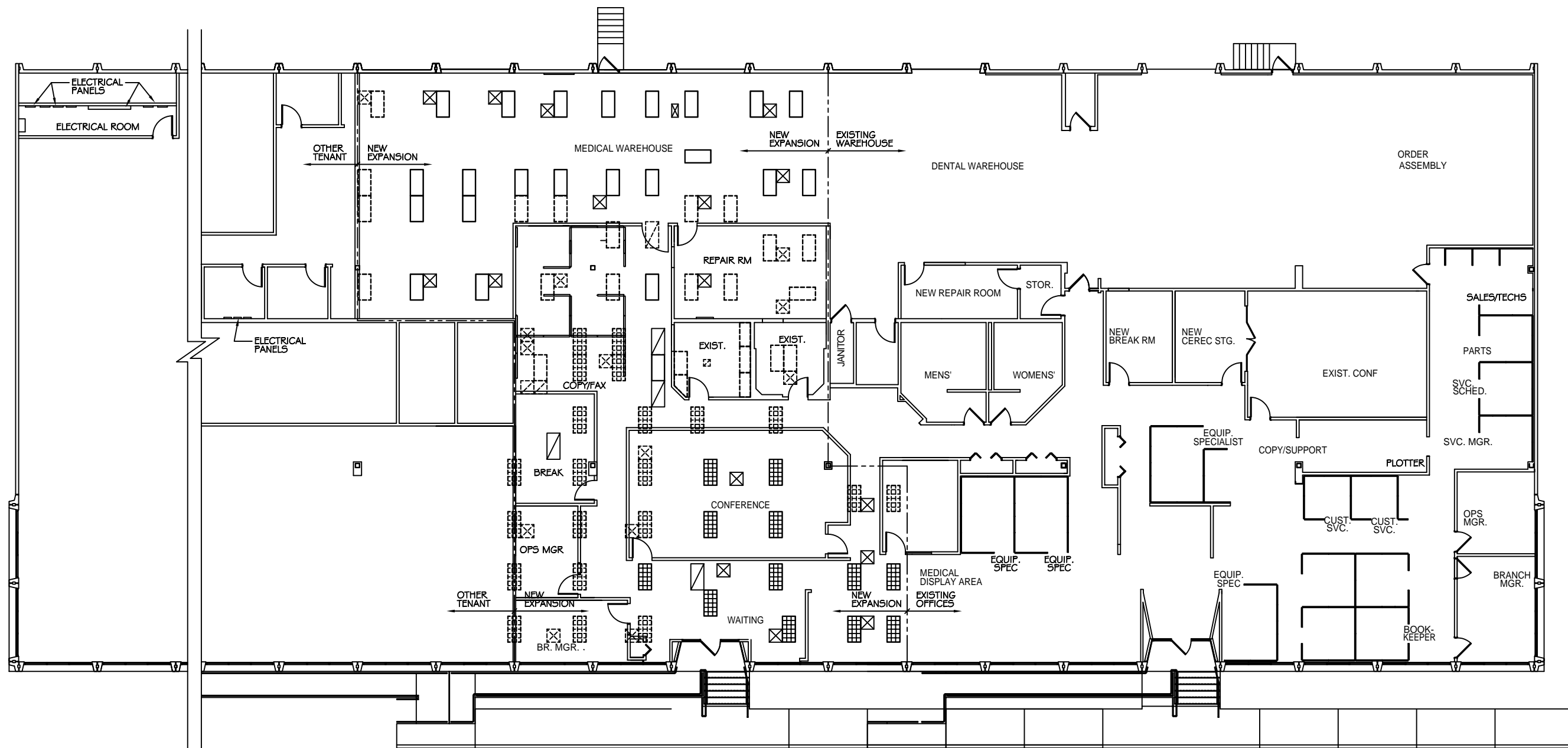
CHIEF ARCHITECT
ROBERT
WILTSE

1095 FLORIDA AVENUE
SLIDELL, LA. 70458
OFFICE: 985-649-5832
FAX: 985-641-5950

WEBSITE:
WWW.DAMMONENGINEERING.COM

EMAIL:
DAMMONENG@BELLSOUTH.NET

- ARCHITECTURE
- ENGINEERING
- STUDIES
- PLANNING
- INVESTIGATION
- EXPERT WITNESS



NEW FLOOR PLAN WITH DEMO ABOVE
 SCALE: 1/8" = 1'-0"
FOR REFERENCE ONLY!

PATTERSON
DENTAL
OFFICE
RENOVATION

NEW
FLOOR PLAN

REV:

SCALE: AS NOTED

JOB#: 2076

DATE: 10-13-10

SHEET

REF

PRELIMINARY (NOT FOR CONSTRUCTION)

OF