

# DAMMON ENGINEERING, INC.

CHIEF ENGINEER  
EMMETT  
DAMMON, P.E.

CHIEF ARCHITECT  
ROBERT  
WILTSE

1095 FLORIDA AVENUE  
SLIDELL, LA. 70458  
OFFICE: 985-649-5832  
FAX: 985-641-5950

WEBSITE:  
WWW.DAMMONENGINEERING.COM

EMAIL:  
DAMMONENG@BELLSOUTH.NET

ARCHITECTURE  
ENGINEERING  
STUDIES  
PLANNING  
INVESTIGATION  
EXPERT WITNESS

OFFICE &  
WAREHOUSE  
EXPANSION &  
RENOVATION

PATTERSON  
DENTAL SUPPLY  
107 MALLARD ST.  
SAINT ROSE, LA  
70087

NEW  
ELECTRICAL  
POWER  
PLAN

REV:

SCALE: AS NOTED

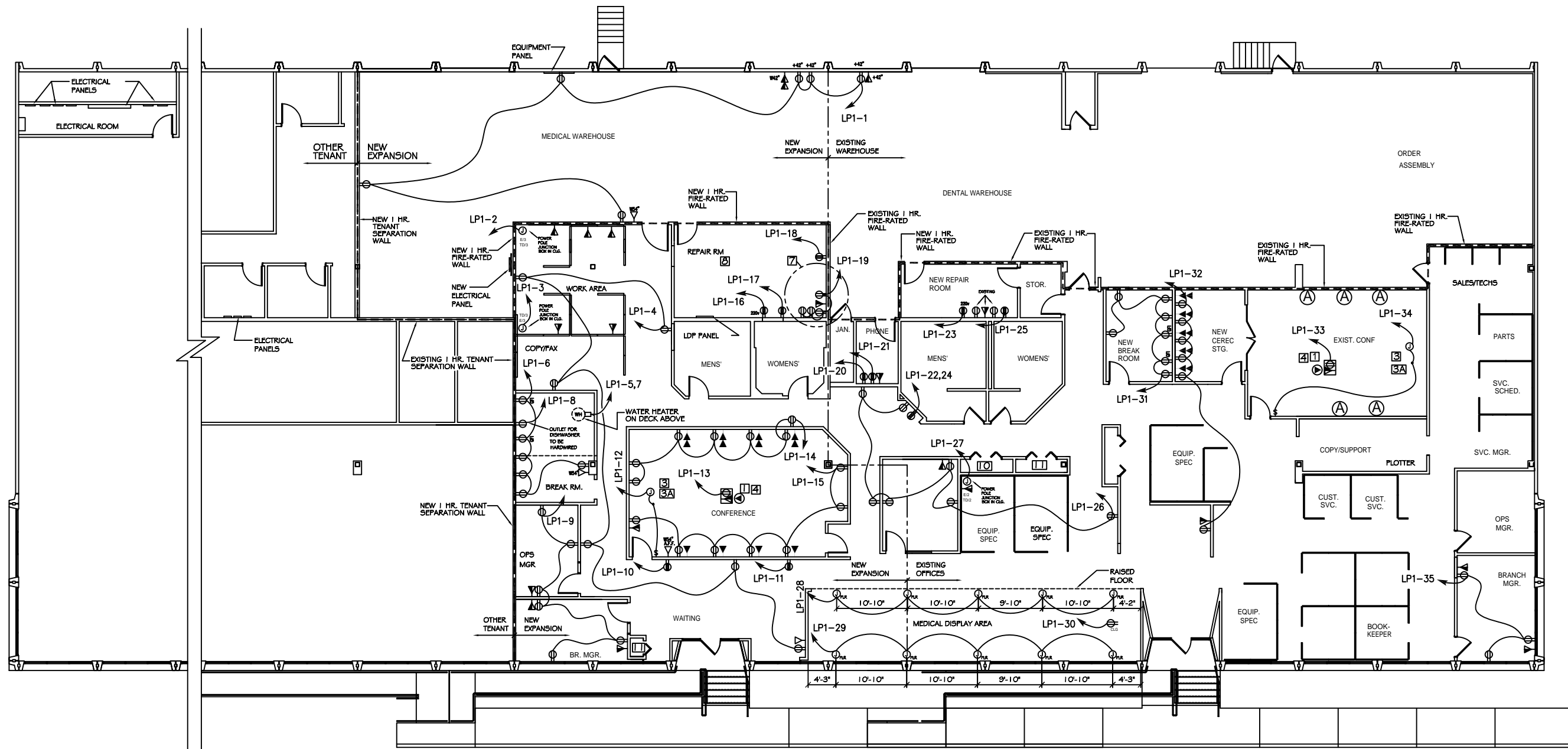
JOB#: 2076

DATE: 11-01-10

SHEET 8

# E-1

OF 11



## NEW ELECTRICAL POWER PLAN

SCALE: 1/8" = 1'-0"

### ELECTRICAL LEGEND

- ⊕ WALL MOUNTED DUPLEX OUTLET WITH DEDICATED CIRCUIT & GROUND.
- ⊕ WALL MOUNTED 4-PLEX OUTLET WITH DEDICATED CIRCUIT & GROUND.
- ⊕ WALL MOUNTED 4-PLEX OUTLET WITH DEDICATED CIRCUIT.
- ⊕ WALL MOUNTED DUPLEX OUTLET.
- ⊕ WALL MOUNTED DUPLEX OUTLET - 220 VOLT/20 AMP.
- ⊕ CEILING MOUNTED DUPLEX OUTLET - 120 VOLT/20 AMP.
- ⊕ DENOTES CEILING MOUNTED DUPLEX OUTLET AMP.
- +42" DENOTES OUTLET HEIGHT ABOVE FINISH FLOOR
- GFI GROUND FAULT INTERRUPT DUPLEX OUTLET MOUNTED AT 42" AFF - U.O.N.

E-8  
1/0-8  
CEILING MOUNTED DUAL JUNCTION BOXES TO PROVIDE ISOLATED POWER & TEL/DATA TO SYSTEMS FURNITURE. E - INDICATES ELECTRICAL, T/D - INDICATES TEL/DATA. NUMBER INDICATES QUANTITY OF WORKSTATIONS. POWER SHALL BE 8-WIRE 4-CIRCUIT. THIS CONTRACT TO PROVIDE POWER FEED, ELBOW FACE PLATE & WHIP CONNECTION TO FURNITURE PANELS. TEL/DATA CABLING BY TENANT'S VENDOR. TENANT'S FURNITURE VENDOR TO PROVIDE ALL PANEL TO PANEL ELECTRICAL CONNECTIONS.

RECESSED ACCENT LIGHTING TO BE ON A DIMMER & SWITCHED SEPARATELY THEN THE STD PARABOLIC LIGHTING.

- (A) WALL MOUNTED COMPRESSED AIR LINE.
- (J) JUNCTION BOX (CEILING OR FLOOR MOUNTED)

### KEYNOTES

- 1 OUTLET & DATA FOR CEILING MOUNTED PROJECTOR. (PATTERSON TO PROVIDE PROJECTOR)
- 2 REINFORCE WALL MOUNTED TELEVISIONS WITH 1/2" PLYWOOD, 48"W X 80"H A.F.F., UNDER FINISH OF 1/2 GWB. OUTLET TO BE 2' FROM CORNER @ 80"A.F.F.
- 3 OUTLET FOR CEILING MOUNTED PROJECTION SCREEN. CENTERED IN ROOM 1' FROM WALL.
- 3A BUILDING CONTRACTOR TO INSTALL LCD PROJECTOR MOUNTING BRACKET AND RUN VGA CABLE WITH AUDIO, FROM LCD PROJECTOR TO WALL PLATE IN FRONT OF TRAINING ROOM. BUILDING CONTRACTOR TO INSTALL WALL PLATE. LCD PROJECTOR & KIT W/CABLE & MOUNTING BRACKET SUPPLIED BY PATTERSON CORP.
- 4 PROVIDE DIMMER OR (2) LIGHT LEVELS IN CONFERENCE ROOM FOR PRESENTATIONS.
- 5 REINFORCE THE WALL WITH 1/4" PLYWOOD. 9'-3" OR 12'-3" AS DIMENSIONED ON PLAN.
- 6 REINFORCE THE WALL WITH 3/8" 72"X 72" PLYWOOD.
- 7 ALL OUTLETS/DATA TO BE LOCATED AT 42"H A.F.F. & CENTERED WITHIN THE 48" AREA AS SHOWN. (IN REPAIR AND/OR TST ROOMS ONLY)
- 8 PROVIDE COMPRESSED AIRLINE 50 PSI TO (3) WALL LOCATION(S) AND (7) FLOOR LOCATIONS IN 2" CONDUIT (COMPRESSOR BY TENANT), FROM THE REPAIR ROOM TO THE DISPLAY AREA TERMINATING IN ONE FLOOR LOCATION. (TO BE SIGHTED AND DETERMINED BY CLIENT.)
- 9 FINAL ELECTRICAL AND DATA LOCATIONS IN THE WAREHOUSE TO BE COORDINATED WITH CLIENT. COMPRESSOR LOCATION TO BE DETERMINED BY THE CLIENT.
- 10 CLOSET TO HAVE ADJUSTABLE SHELVING.
- 11 CLOSET TO HAVE COAT ROD AND SHELF.

PRELIMINARY (NOT FOR CONSTRUCTION)