

ELECTRICAL LIGHTING PLAN
SCALE : 1/4" = 1'

SYMBOL SCHEDULE

- FLUORESCENT FIXTURE, RECESSED.
- LED FIXTURE, RECESSED.
- COMPACT FLUORESCENT, HID, OR LED FIXTURE, WALL MOUNTED.
- EXIT LIGHT, TOP MOUNTED, WITH DIRECTIONAL ARROWS.
- TWIN HEAD EMERGENCY BATTERY FIXTURE.
- COMBINATION TWIN HEAD EMERGENCY BATTERY AND EXIT FIXTURE.
- 20A, 1P WALL SWITCH, SUBSCRIPT DENOTES OUTLET CONTROLLED.
- 20A THREE-WAY WALL SWITCH.
- 20A, 3-WIRE, 125V, GROUNDING TYPE DUPLEX RECEPTACLE, NEMA 5-20R.
- SAME AS EXCEPT MOUNTED ABOVE COUNTER AT HEIGHT AS DIRECTED.
- SAME AS EXCEPT WITH GROUND FAULT INTERRUPTER.
- SAME AS EXCEPT ELECTRIC WATER COOLER.
- JUNCTION BOX 4-11/16" SQUARE OR LESS, WALL MOUNTED.
- JUNCTION BOX 4-11/16" SQUARE OR LESS, WALL MOUNTED.
- SAME AS EXCEPT PROVIDE WITING IN RACEWAY TO EACH LUMINARIES IN THIS ROOM.
- DATA WALL OUTLET WITH 3/4" RACEWAY STUBBED-UP ABOVE ACCESSIBLE CEILING AND BUSHED. LOCATE AS DIRECTED.
- DISCONNECT SWITCH.
- PANELBOARD OR LOADCENTER.
- VENT FAN, PROVIDED BY DIVISION 25 CONNECTION BY DIVISION 26.
- FIRE ALARM PULL STATION.
- FIRE ALARM AUDIOVISUAL UNIT, WALL MOUNTED.
- SMOKE DETECTOR.
- HEAT DETECTOR.
- WIRING IN RACEWAY CONCEALED OVERHEAD OR IN WALLS (CROSSBARS DENOTE NUMBER OF CONDUCTORS WHEN MORE THAN TWO), REQUIRED GREEN EQUIPMENT GROUNDING CONDUCTOR IS NOT SHOWN AS A CROSSBAR. ARROWS INDICATE NUMBER OF CIRCUITS.

FIXTURE SCHEDULE

- F1 LITHONIA, 2GT8-3-32-A12-MVOLT-GEB10IS OR EQUAL, 2' X 4', 3-LAMP, A12 ACRYLIC LENS, RECESSED LAY-IN FLUORESCENT FIXTURE WITH ONE 120/277V ELECTRONIC T8 BALLAST.
- F2 LITHONIA, L7XLED-T24/6PMMW-LED-30K90CRI, 6", 90CRI, 600-LUMEN, 3000K, WIDE FLANGED, MATTE WHITE BAFFLE, LED RECESSED TRIM AND STEEL HOUSING.
- F3 LITHONIA, L3LED-T24/4BEMW-MW-LED-30K90CRI, 4", 90CRI, 570-LUMEN, 3,000K, WIDE FLANGED, MATTE WHITE BAFFLE, LED RECESSED TRIM AND STEEL HOUSING.
- F4 FEISS, WB1220ORB, 4.5" W X 16" H, OIL RUBBED BRONZE, ADA WALL SCONCE WITH A12 LED LAMP 2700K.
- F5 KICHLER, 42025OZ, 23.25" W X 10.00" H, ROUND PENDANT, OLDE BRONZE FINISH WITH 4 A12 LED LAMPS, 2700K.
- F6 BATHROOM VANITY SELECTED BY OTHERS.
- F7 LITHONIA, FMMCL-940, 7" LED CLOSET FIXTURE.
- F8 LITHONIA, SB-2-32-MVOLT-GEB10IS OR EQUAL, 4", 2-LAMP, T8 FLUORESCENT FIXTURE WITH A12 WRAPAROUND LENS.
- EM LITHONIA, ELM2-LED, DUEL HEAD EMERGENCY WITH EMERGENCY BATTERY BACKUP.
- EX LITHONIA, LQM-S-3-R-120/277, UNIVERSAL EXIT FIXTURE WITH EMERGENCY BATTERY BACKUP.
- EMX LITHONIA, LHQM-LED-R-HO OR EQUAL, COMBINATION DUEL HEAD EMERGENCY AND EXIT FIXTURE WITH EMERGENCY BATTERY BACKUP.

NOTES

1. THIS DOCUMENT HAS BEEN PREPARED BY ME AND/OR UNDER MY SUPERVISION AND IT COMPLIES, TO THE BEST OF MY KNOWLEDGE AND BELIEF, WITH LOCAL AND STATE CODE REQUIREMENTS.
2. ALL ELECTRICAL EQUIPMENT SHALL BE INSTALLED AS PER NATIONAL ELECTRICAL CODE NFPA 70 AND BE U.L. LISTED.
3. ELECTRICAL CONTRACTOR SHALL COORDINATE WITH DENTAL DRAWINGS FOR EQUIPMENT LOCATIONS AND SPECIFICATIONS.

DAMMON ENGINEERING, INC.
LOUISIANA & MISSISSIPPI
www.dammonengineering.com
info@dammonengineering.com
554 Old Spanish Trail
Stiel, LA 70468
PH: 985.649.3832 F: 985.641.9590

REVISIONS	DATE
# DESCRIPTION	

SEAL:
STATE OF LOUISIANA
RICKEY JOHN KASTNER, JR.
License No. 37664
PROFESSIONAL ENGINEER
08/01/2016

RENOVATION FOR
DR. DANIELLA
DENTALS OFFICE
1901 HIGHWAY 190, SUITE 13
MADEVILLE, LA 70448
JOB No: 2284 DATE: JUNE 21, 2016
DRAWN BY: RJK CHECKED BY: RJK

SHEET TITLE:
ELECTRICAL - LIGHTING PLAN

DRAWING NUMBER:

E - 1

SHEET No: 1 of #



DIRECTORY	CCT. NO.	BPS. AMPS.	LI	L2	BPS. AMPS.	CCT. NO.	DIRECTORY
AHU1*	1	20			30	2	CU1*
	3				4		
AIR COMPRESSOR	5	20			20	6	VAC
	7				8		
PANORAMIC X-RAY	9	20			20	10	VAC
	11	20			12		
112,113,114,115,116 CHAIR	13	20			20	14	PANORAMIC X-RAY
112,113,114,115,116 DENTAL LIGHT	15	20			20	16	STERILIZER
112,113,114,115,116 REC.	17	20			20	18	AUTO-CLAVE
112,113,114,115,116 CABINET	19	20			20	20	ULTRASONIC CLEANER
112 X-RAY	21	20			20	22	HANDPIECE
113 X-RAY	23	20			20	24	MODEL TRIMMER
114 X-RAY	25	20			20	26	WATER VALVE
115 X-RAY	27	20			20	28	MILL
116 X-RAY	29	20			20	30	VENT

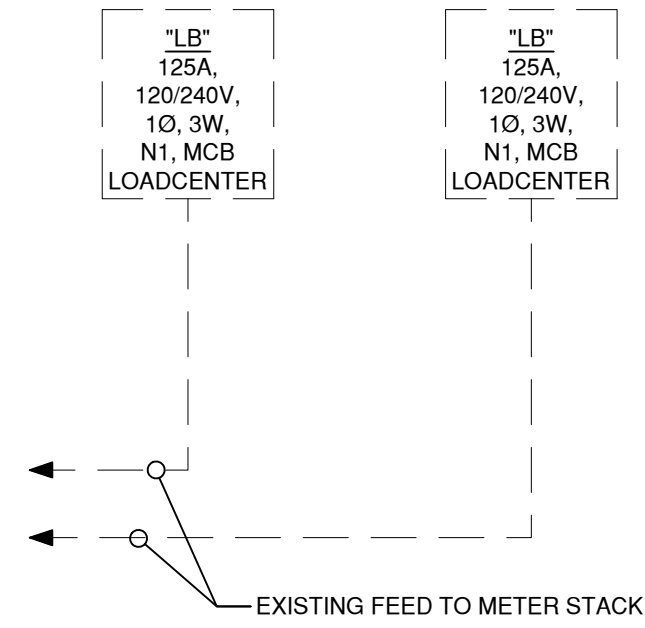
VOLTAGE: 120/240V 1 PHASE 3 WIRE SN 10KAIC
 MAIN BREAKER: 125A, MCB
 MOUNTING: SURFACE
 NOTE: *RECONNECT EXISTING CIRCUITS

PANEL NO.	LA
LOCATION	SEE PLANS

DIRECTORY	CCT. NO.	BPS. AMPS.	LI	L2	BPS. AMPS.	CCT. NO.	DIRECTORY
AHU2*	1	60			50	2	CU2*
	3				4		
101 LTG	5	20			20	6	112,113,114,115,116 LTG
102,103,105 LTG	7	20			20	8	109,110,111,119 LTG
118 LTG	9	20			20	10	RESTROOM 117 LTG & REC
104,106,107 LTG	11	20			20	12	RESTROOM 108 LTG & REC
101,102 REC	13	20			20	14	EWC
104 REC	15	20			20	16	REFRIGERATOR
111 REC	17	20			20	18	110 COUNTERTOP
SPACE	19	20			20	20	109,110 REC
SPACE	21	20			30	22	EWH
SPACE	23	20			24		
SPACE	25	20			26		SPACE
SPACE	27	20			28		SPACE
SPACE	29	20			29	30	SPACE

VOLTAGE: 120/240V 1 PHASE 3 WIRE SN 10KAIC
 MAIN BREAKER: 125A, MCB
 MOUNTING: SURFACE
 NOTE: * RECONNECT EXISTING CIRCUITS

PANEL NO.	LB
LOCATION	SEE PLANS



ELECTRICAL ONELINE DIAGRAM

SCALE : NOT TO SCALE

FIRE ALARM NOTES

- CONTRACTOR SHALL PROVIDE THE SERVICES OF A LOUISIANA LICENSED FIRE ALARM CONTRACTOR TO PROVIDE A COMPLETE AND OPERABLE FIRE ALARM SYSTEM APPROVED BY LOUISIANA STATE FIRE MARSHAL AND ORLEANS PARISH.
- FIRE ALARM CONTRACTOR TO PROVIDE AND INSTALL ADDRESSABLE ANALOG FIRE ALARM SYSTEM, INCLUDING PULL STATIONS, SMOKE DETECTORS, HEAT DETECTORS, NOTIFICATION DEVICES, ANNUNCIATOR AT ENTRANCE AND OUTSIDE STROBE AND OUTSIDE ALARM BELL. CONTRACTOR TO ARRANGE PERMITS, INSPECTIONS, FEES, CHECK LIST, SUBMITTALS AND MAKE ANY CHANGES REQUIRED BY AUTHORITY HAVING JURISDICTION - WITHOUT ADDITIONAL COST TO THE OWNER.
- PROVIDE DUCT DETECTORS AND SMOKE CONTROL AS REQUIRED FROM MECHANICAL EQUIPMENT AND PROVIDE TEST STATIONS AS NEEDED.

SYMBOL SCHEDULE

- FLUORESCENT FIXTURE, RECESSED.
 - LED FIXTURE, RECESSED.
 - COMPACT FLUORESCENT, HID, OR LED FIXTURE, WALL MOUNTED.
 - EXIT LIGHT, TOP MOUNTED, WITH DIRECTIONAL ARROWS.
 - TWIN HEAD EMERGENCY BATTERY FIXTURE.
 - COMBINATION TWIN HEAD EMERGENCY BATTERY AND EXIT FIXTURE.
 - 20A, 1P WALL SWITCH. SUBSCRIPT DENOTES OUTLET CONTROLLED.
 - 20A THREE-WAY WALL SWITCH.
 - 20A, 3-WIRE, 125V, GROUNDING TYPE DUPLEX RECEPTACLE, NEMA 5-20R.
 - SAME AS EXCEPT MOUNTED ABOVE COUNTER AT HEIGHT AS DIRECTED.
 - SAME AS EXCEPT WITH GROUND FAULT INTERRUPTER.
 - SAME AS EXCEPT ELECTRIC WATER COOLER.
 - JUNCTION BOX 4-11/16" SQUARE OR LESS, WALL MOUNTED.
 - JUNCTION BOX 4-11/16" SQUARE OR LESS, WALL MOUNTED.
 - SAME AS EXCEPT PROVIDE WITING IN RACEWAY TO EACH LUMINARIES IN THIS ROOM.
 - DATA WALL OUTLET WITH 3/4" RACEWAY STUBBED-UP ABOVE ACCESSIBLE CEILING AND BUSHED. LOCATE AS DIRECTED.
 - DISCONNECT SWITCH.
 - PANELBOARD OR LOADCENTER.
 - VENT FAN, PROVIDED BY DIVISION 25 CONNECTION BY DIVISION 26.
 - FIRE ALARM PULL STATION.
 - FIRE ALARM AUDIOVISUAL UNIT, WALL MOUNTED.
 - SMOKE DETECTOR.
 - HEAT DETECTOR.
- WIRING IN RACEWAY CONCEALED OVERHEAD OR IN WALLS (CROSSBARS DENOTE NUMBER OF CONDUCTORS WHEN MORE THAN TWO), REQUIRED GREEN EQUIPMENT GROUNDING CONDUCTOR IS NOT SHOWN AS A CROSSBAR. ARROWS INDICATE NUMBER OF CIRCUITS.

SPECIFICATIONS

- ELECTRICAL WORK SHALL BE IN ACCORDANCE WITH THE NATIONAL ELECTRICAL CODE, STATE AND CITY REGULATIONS AND ORDINANCES.
- MATERIALS SHALL BE NEW AND U.L. APPROVED, EXCEPT AS INDICATED.
- CONTRACTOR SHALL APPLY FOR PERMITS AND PAY INSPECTION FEES. NO WORK SHALL BE CONCEALED UNTIL APPROVED BY LOCAL INSPECTOR. UPON COMPLETION, FURNISH CERTIFICATE OF APPROVAL FROM DIVISION OF REGULATORY INSPECTION AS APPLICABLE.
- CONDUCTORS SHALL BE COPPER WITH TYPE THHN/THWN INSULATION, AND SHALL BE #12 AWG OR LARGER.
- WIRING INSTALLED OUTDOORS SHALL BE CONTAINED IN PVC CONDUIT OR ELECTRIC METALLIC TUBING CONDUIT WITH COMPRESSION FITTINGS, UNLESS INDICATED OTHERWISE.
- WIRING INSTALLED EXPOSED IN DRY LOCATIONS SHALL BE CONTAINED IN ELECTRIC METALLIC TUBING WITH SET SCREW FITTINGS, UNLESS INDICATED OTHERWISE.
- RACEWAYS SHALL BE CONCEALED UNLESS INDICATED OTHERWISE.
- OUTLET BOXES SHALL BE GALVANIZED STEEL 4" SQUARE X 1 1/2" DEEP, OR LARGER BOX WITH RAISED DEVICE COVER. CEILING BOXES SHALL BE 4" OCTAGONAL X 1 1/2" DEEP OR LARGER. BOXES IN WALLS SHALL NOT BE INSTALLED BACK-TO-BACK.
- OUTLET BOXES FOR EXPOSED WORK AT DRY LOCATIONS IN MECHANICAL AND ELECTRICAL ROOMS (WHERE EXPOSED RACEWAYS ARE INSTALLED) SHALL BE 4" SQUARE X 1 1/2" DEEP OR LARGER WITH APPLETON 1/2" DEEP RAISED SURFACE METAL COVERS TO ACCOMMODATE THE DEVICES INDICATED. OUTLET BOXES FOR EXPOSED WORK EXPOSED TO WEATHER OR IN DAMP LOCATIONS SHALL BE OF CAST OR MALLEABLE IRON, SIMILAR TO GROUSE-HINDS TYPE FS OR FD CONDUITS. BOXES SHALL HAVE METAL COVERS TO ACCOMMODATE THE DEVICES INDICATED.
- EACH BRANCH CIRCUIT AND FEEDER SHALL BE PROVIDED WITH A GROUND CONDUCTOR INSTALLED WITH THE CIRCUIT CONDUCTORS. EACH GROUND CONDUCTOR SHALL BE A GREEN INSULATED COPPER CONDUCTOR, SIZED IN ACCORDANCE WITH TABLE 250.122 OF THE NATIONAL ELECTRICAL CODE NFPA 70. THESE GROUNDING CONDUCTORS ARE NOT SHOWN ON THE DRAWINGS.
- AFTER COMPLETION OF BRANCH CIRCUIT WORK, NEW CORRECTED TYPEWRITTEN DIRECTORIES SHALL BE PROVIDED IN PANELBOARDS AND LOADCENTERS SERVING THE AREA.
- ELECTRICAL CONTRACTOR SHALL INSTALL POWER WIRING REQUIRED FOR MECHANICAL SYSTEMS. CONTROL WIRING SHALL BE BY MECHANICAL CONTRACTOR.
- CONNECTION TO MOTORS SHALL BE MADE WITH A SHORT PIECE OF FLEXIBLE METAL CONDUIT BETWEEN RIGID CONDUIT SYSTEM AND MOTOR TERMINAL BOX.
- PROVIDE BONDING AROUND CONCENTRIC AND ECCENTRIC KNOCKOUTS ON EQUIPMENT.
- PROVIDE ADDITIONAL BOXES IN RACEWAYS AS NECESSARY. LOCATIONS SHALL MEET NFPA 70.

NOTES

- THIS DOCUMENT HAS BEEN PREPARED BY ME AND/OR UNDER MY SUPERVISION AND IT COMPLIES, TO THE BEST OF MY KNOWLEDGE AND BELIEF, WITH LOCAL AND STATE CODE REQUIREMENTS.
- ALL ELECTRICAL EQUIPMENT SHALL BE INSTALLED AS PER NATIONAL ELECTRICAL CODE NFPA 70 AND BE U.L. LISTED.
- ELECTRICAL CONTRACTOR SHALL COORDINATE WITH DENTAL DRAWINGS FOR EQUIPMENT LOCATIONS AND SPECIFICATIONS.

DAMMON ENGINEERING, INC.
 LOUISIANA & MISSISSIPPI
 Chief Engineer: Brian Mutsch, PE
 www.dammonengineering.com
 info@dammonengineering.com
 554 Old Spanish Trail
 Slidell, LA 70668
 PH: 985.649.5822 F: 985.641.9590

REVISIONS	DATE
# DESCRIPTION	

SEAL:

RENOVATION FOR
D R · D A N I E L L A
D E N T A L O F F I C E
 1001 HIGHWAY 190, SUITE 13
 MANDEVILLE, LA 70448
 JOB No: 2284 DATE: JUNE 21, 2016
 DRAWN BY: RJK CHECKED BY: RJK

SHEET TITLE:
 ELECTRICAL - SCHEDULES

DRAWING NUMBER:
E - 3

SHEET No: 1 of #

