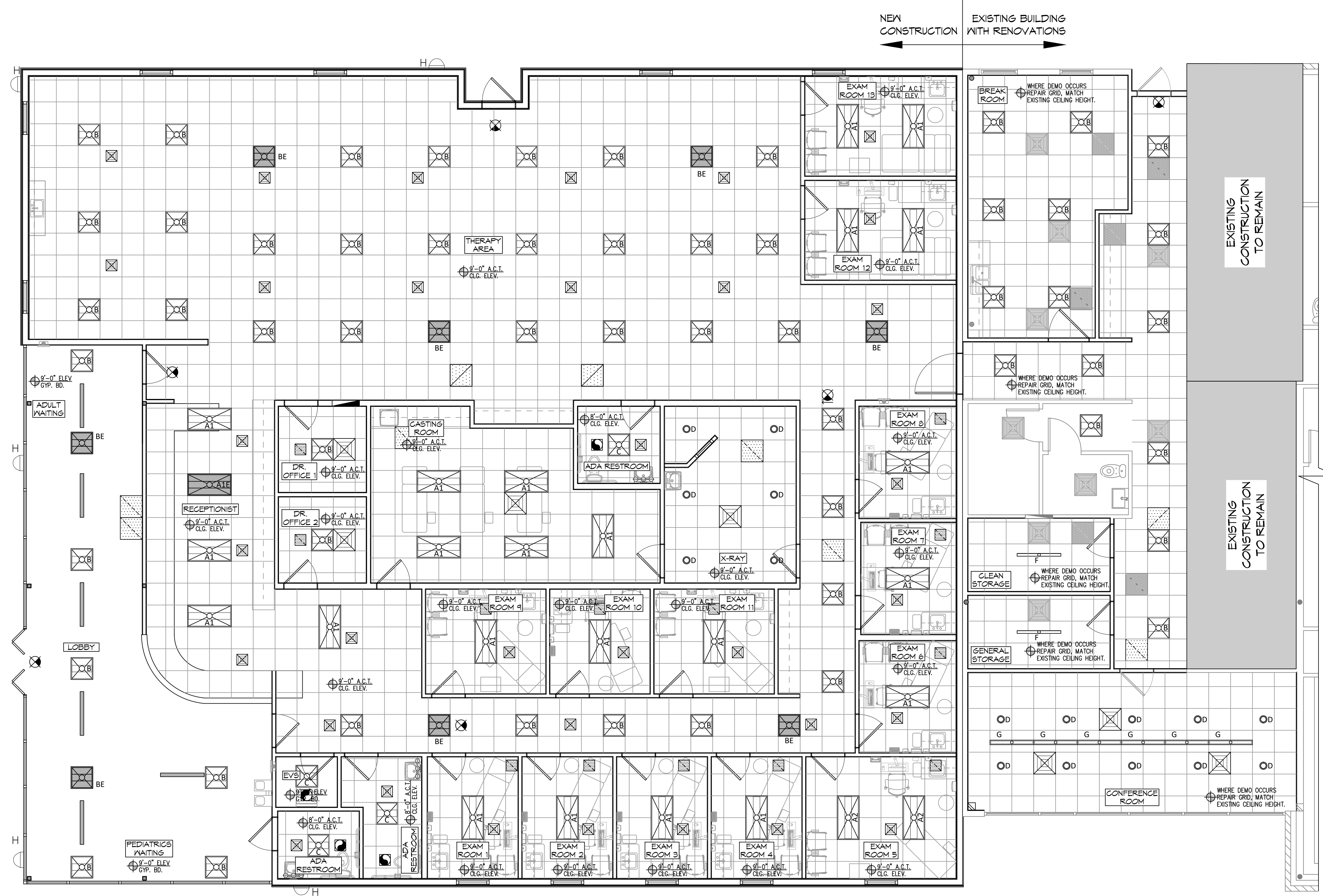


DATE: 05/11/2022  
 PROJECT: 2443 - Pediatric - Renovation - Phase 2  
 DRAWING: REFLECTED CEILING PLAN

## REFLECTED CEILING LEGEND

- |   |   |
|---|---|
| <ul style="list-style-type: none"> <li> 2x4 COLUMBIA LGAT24-30-ML6-EU</li> <li> 2x4 COLUMBIA LGAT24-30-HL6-EU</li> <li> 2x4 COLUMBIA - EMERGENCY</li> <li> PRESCOLITE LTR-4RD-H-SL19L-DM1-LTR-4RD-T-9L30K9VDS</li> <li> EXTERIOR LIGHT, MATCH EXISTING &amp; CONNECT TO EXISTING CIRCUIT</li> <li> VANITY LIGHT FIXTURE</li> <li> EXHAUST FAN - SEE MECHANICAL</li> <li> NEW SUPPLY AIR GRILLE</li> <li> EXISTING SUPPLY AIR GRILLE</li> <li> GYPSUM BOARD CEILING</li> </ul> | <ul style="list-style-type: none"> <li> 2x2 COLUMBIA LGAT22-30ML6-EU</li> <li> 2x2 COLUMBIA LGAT22-L595 (4400LM)</li> <li> 2x2 COLUMBIA - EMERGENCY</li> <li> 48" COLUMBIA MP34-35VM-CN-EDU</li> <li> 48" LITECONTROL 4L-P-D-4-SOF-X-CX-35K-D030</li> <li> EXIT LIGHT FIXTURE - CEILING MOUNTED</li> <li> NEW RETURN AIR FILTER GRILLE</li> <li> LINEAR SLOT DIFFUSER</li> <li> EXISTING RETURN AIR FILTER GRILLE</li> <li> 2x2 CEILING GRID</li> </ul> |
|---|---|



**REFLECTED CEILING PLAN**  
 SCALE: 3/16" = 1'-0"

# DAMMON

ENGINEERING, INC.

LOUISIANA & MISSISSIPPI

Chief Engineer: Brian Misch, PE  
 554 Old Spanish Trail  
 Slidell, LA 70488  
 www.dammonengineering.com  
 info@dammonengineering.com  
 PH: 985.649.5832

#	DESCRIPTION	DATE

SEAL:

Review Set

5/6/2022

NEW ADDITION

H O N T A S M O O B

7121 LA HWY 21, 70488  
 COVINGTON, LA  
 JOB No: 2443  
 DATE: 05-06-2022  
 DRAWN BY: PDP  
 CHECKED BY: CKD

SHEET TITLE:  
 REFLECTED CEILING PLAN

DRAWING NUMBER:  
A105