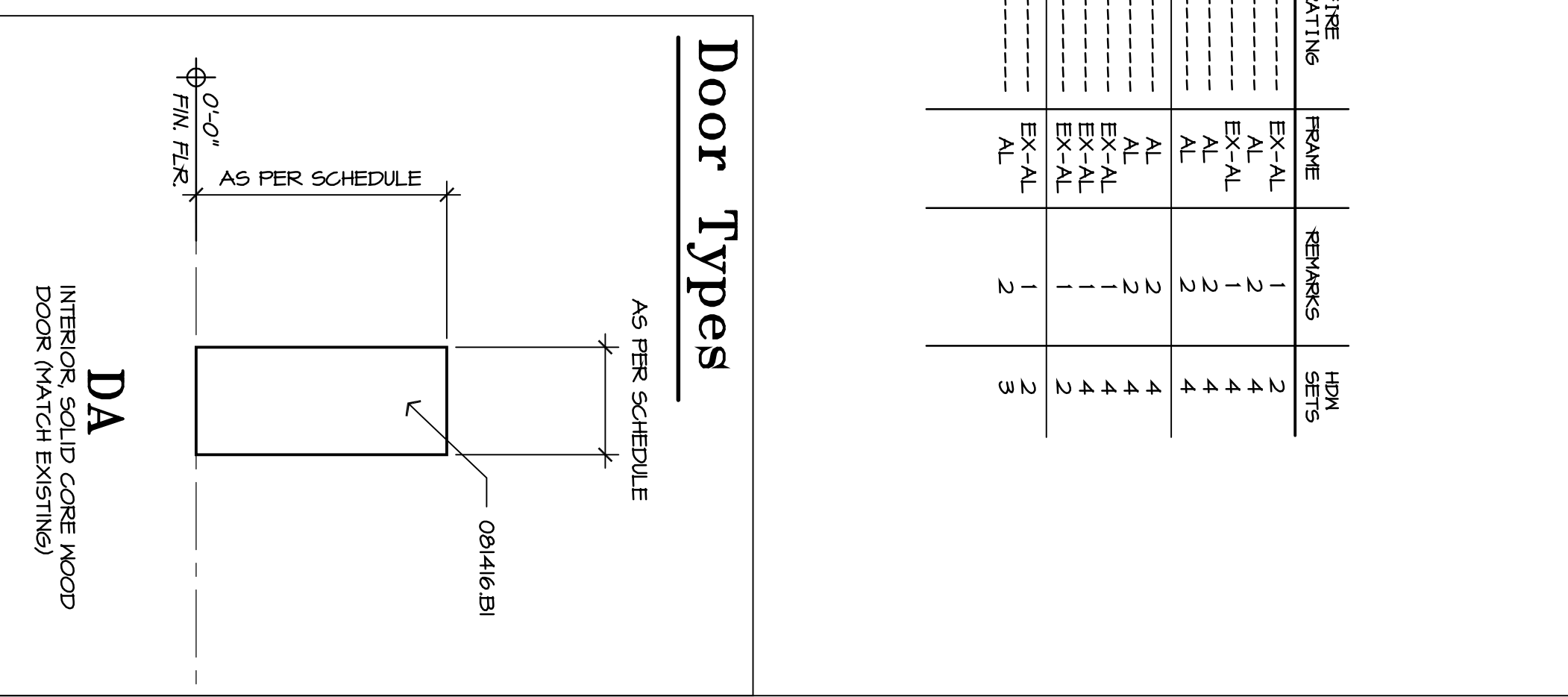


# Room Finish Schedule

RM. #	ROOM NAME	FLOOR	BASE	WALL	CEILING	REMARKS
100	LOBBY		SEALED CONCRETE VGT TO MATCH EXISTING	CARPET	RUBBER VINYL TO MATCH EXIST. SHEET VINYL RETURN 4" ON WALL	
101	RECEPTION		HEAT WELDED SHEET VINYL	PAINTED GYP. BOARD	EPOXY PAINTED GYP. BOARD	
102	FILES					
103	CORRIDOR A					
103	CORRIDOR B					
103	CORRIDOR C					
103	CORRIDOR D					EPOXY PAINT @ SCRUB SINK
104	OFFICE					
105	NURSE STATION					
106	EXAM 4					
107	EXAM 5					
108	EXAM 6					
109	EXAM 7					
110	SOILED					
111	CLEAN HOLD					
112	RESROOM					
113	OFFICE					
114	OFFICE					
115	MECH.					
116	ELEC.					
117	LOUNGE					
118	EXAM 3					
119	EXAM 2					
120	EXAM 1					
121	OFFICE					
122	RESROOM					
123	RESROOM					

# Door Schedule

RM.	SIZE	HEIGHT	THICK	TYPE	FRAME	REMARKS	HM
104.1	3'-0" x 7'-0"	7'-0"	1-3/4"	DA	EX-AL	1	2
107.1	4'-0" x 7'-0"	7'-0"	1-3/4"	DA	EX-AL	1	4
107.2	3'-0" x 7'-0"	7'-0"	1-3/4"	DA	EX-AL	2	4
108.1	4'-0" x 7'-0"	7'-0"	1-3/4"	DA	AL	2	4
108.2	4'-0" x 7'-0"	7'-0"	1-3/4"	DA	AL	2	4
109.1	4'-0" x 7'-0"	7'-0"	1-3/4"	DA	AL	2	4
109.2	3'-0" x 7'-0"	7'-0"	1-3/4"	DA	EX-AL	1	4
111.1	3'-0" x 7'-0"	7'-0"	1-3/4"	DA	EX-AL	1	4
111.2	3'-0" x 7'-0"	7'-0"	1-3/4"	DA	EX-AL	1	4
113.1	3'-0" x 7'-0"	7'-0"	1-3/4"	DA	EX-AL	1	2
114.1	3'-0" x 7'-0"	7'-0"	1-3/4"	DA	EX-AL	1	2
122.1	3'-0" x 7'-0"	7'-0"	1-3/4"	DA	AL	2	3



## Medical Office Suite

### Tenant Improvement for Dr. Hertzak, Suite D

Project Data: INFORMATION EXTRACTED FROM EXISTING DRAWINGS PREPARED BY ROZAS WARD ARCHITECT, DATED APRIL 24, 2002.

**NOTING:**  
CITY OF SLIDELL

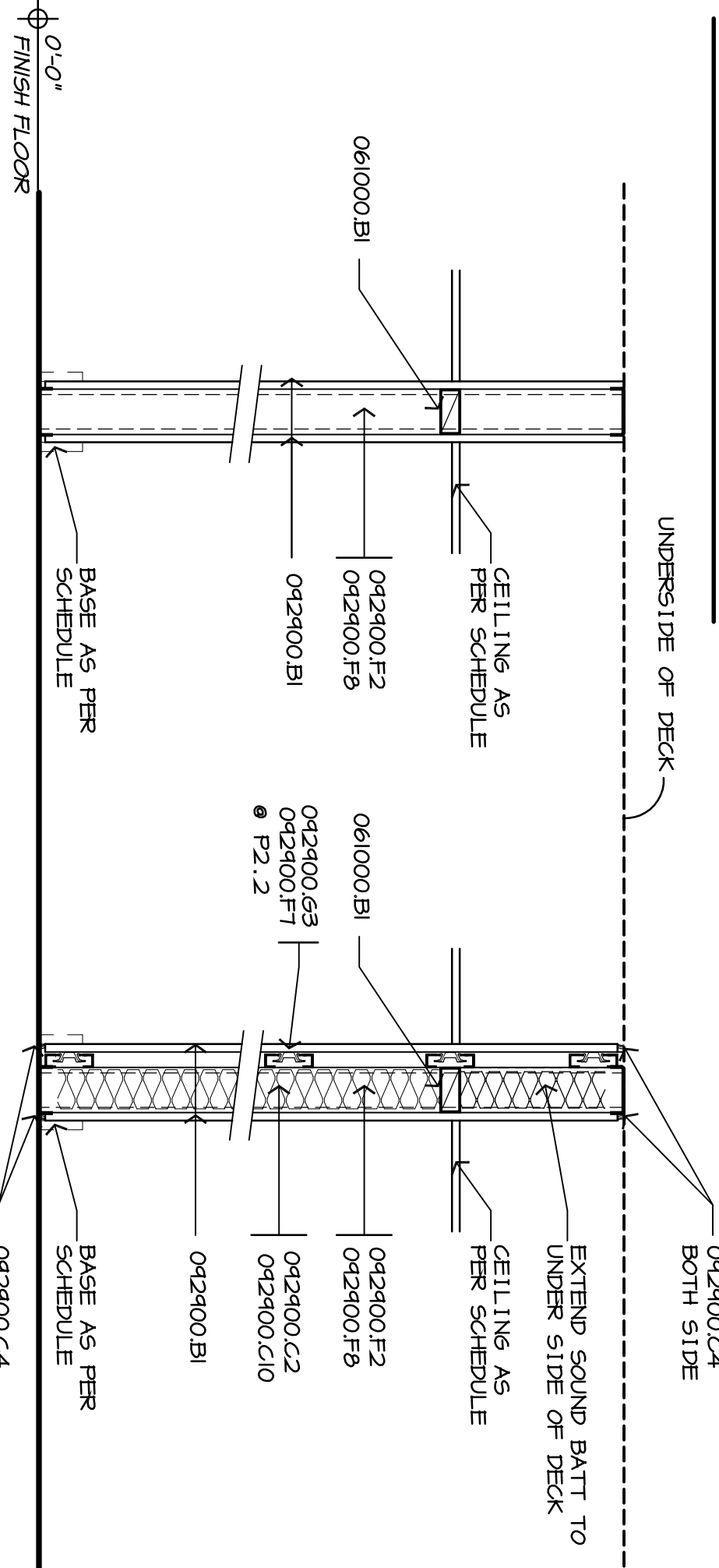
**APPLICABLE CODES:**  
INTERNATIONAL BUILDING CODE (IBC), 2006 ED.  
LIFE SAFETY CODE (LSC) - NFPA 101, 2009 ED.  
LOUISIANA STATE PLUMBING CODE - 2000 ED.  
NATIONAL ELECTRICAL CODE - 2005 ED.  
NATIONAL FIRE ALARM CODE - 2005 ED.  
HANDICAPPED CODE ANSI, A117.1 - 1994 ED.  
AMERICANS WITH DISABILITIES ACT - 1990 ED.  
ADA/AG (ACCESSIBILITY GUIDELINES) - SEPTEMBER 1994

**CONSTRUCTION ITEMS**  
IBC - TYPE II (000) - UNPROTECTED  
IFC - TYPE IIB

**EXISTING BUILDING DATA:**  
MEDICAL OFFICE BUILDING  
BUILDING HEIGHT: 16'-6"  
BUILDING AREA: 12,211 SF.  
EXISTING OCCUPANT LOAD: 122 PERSONS  
BUSINESS (MEDICAL)  
EXISTING FIRE EXTINGUISHERS:  
\* 1 EXISTING FIRE EXTINGUISHER PROVIDED IN SUITE D

**TENANT DATA:**  
DR. HERTZAK, SUITE D: 2,400 SF  
OCCUPANT LOAD: 24 PERSONS  
BUSINESS (MEDICAL)  
OFFICE BUILDING  
EXISTING BUILDING DATA:  
MEDICAL OFFICE BUILDING  
BUILDING HEIGHT: 16'-6"  
BUILDING AREA: 12,211 SF.  
EXISTING OCCUPANT LOAD: 122 PERSONS  
BUSINESS (MEDICAL)  
OFFICE BUILDING  
EXISTING FIRE EXTINGUISHERS:  
\* 1 EXISTING FIRE EXTINGUISHER PROVIDED IN SUITE D

# Partition Schedule

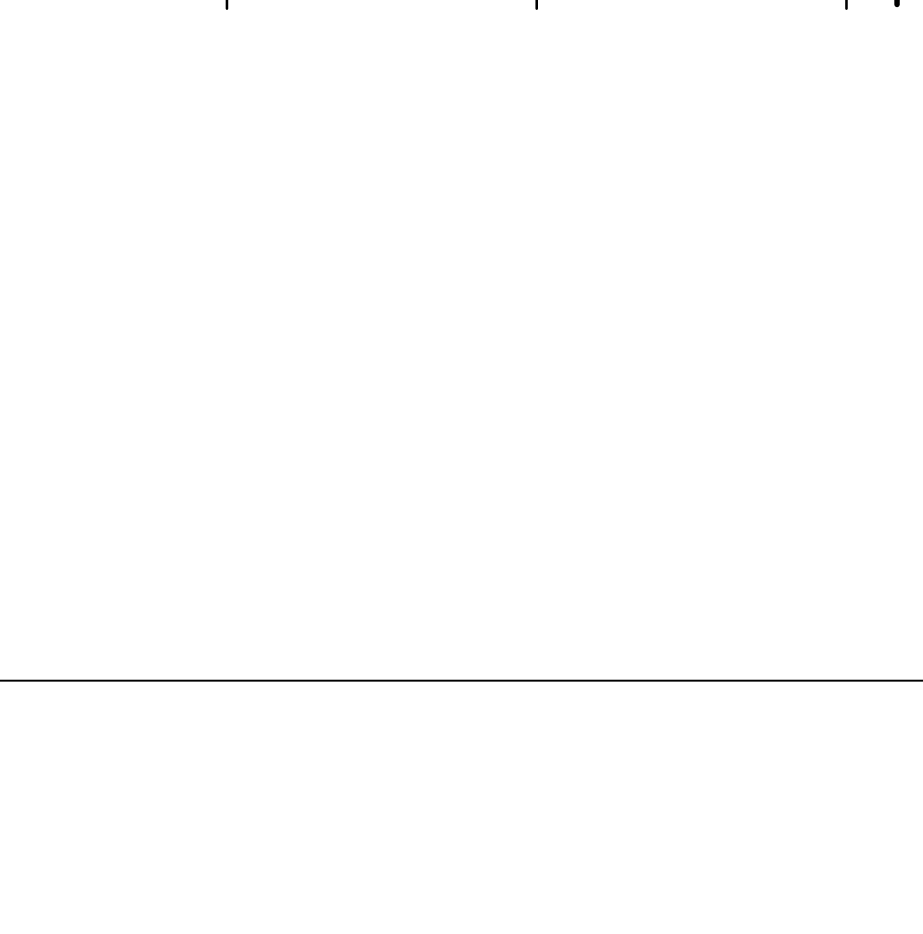


## Project Directory

**ARCHITECT**  
ARCHITECTS SOUTHWEST  
534 JEFFERSON STREET  
LAFAYETTE, LA 70501  
PH: (837)-287-2211  
FAX: (837)-287-2213

**MECHANICAL / ELECTRICAL ENGINEER**  
M

**MILLIAMSON DESIGNS INC.**  
HAL WILLIAMSON  
3646 MAGAZINE STREET  
NEW ORLEANS, LOUISIANA 70115  
PHONE: 504-844-4445  
FAX: 504-844-4446



## Mounting Height Schedule

**P1, P1.1**  
3'-5 1/2"  
UNLESS NOTED OTHERWISE, ALL PARTITIONS ARE 1/2" THICK.

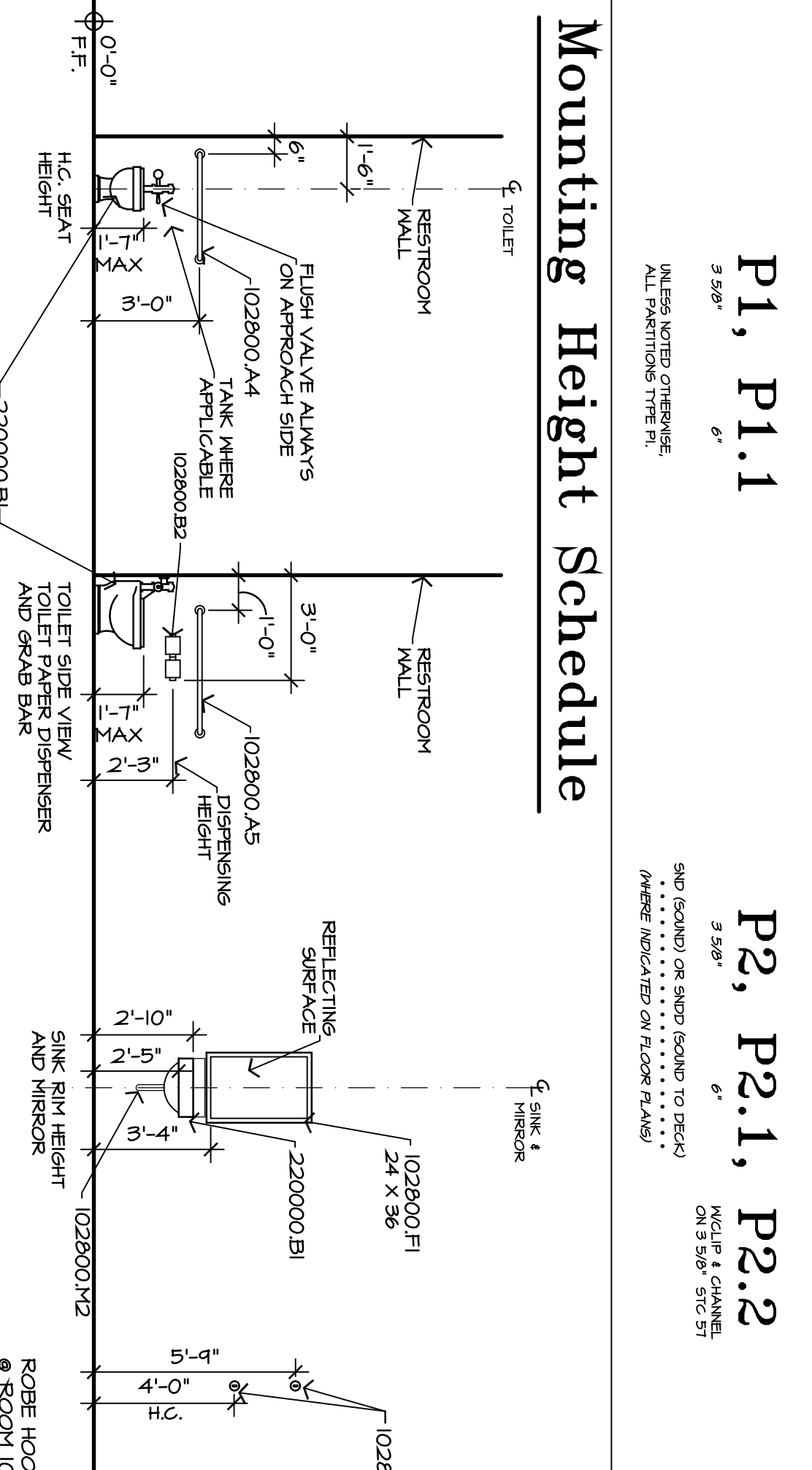
**P2, P2.1, P2.2**  
3'-5 1/2"  
SINK & MIRROR OR SINK & MIRROR TO DECK (WHERE INDICATED ON FLOOR PLANS)



## Index to Drawings

NO.	TITLE SHEET, PROJECT DATA, MOUNTING HEIGHT SCHEDULE, DOOR SCHEDULE, DOOR TYPES, FINISH SCHEDULE, PARTITION WORK PLAN, FLOOR PLAN, REFLECTED CEILING PLAN, CEILING DETAILS, MIRROR SECTIONS
P2.1	PLUMBING/SPLINKER THIRD FLOOR PLAN
P2.1	PLUMBING RISER DIAGRAMS / PLUMBING DETAILS THIRD FLOOR.
M2.1	MECHANICAL THIRD FLOOR PLAN
E2.1	ELECTRICAL THIRD FLOOR PLAN
E2.1	ELECTRICAL LEGEND, LIGHTING FIXTURE SCHEDULE, ELECTRICAL PANEL SCHEDULE, POWER & SPECIAL SYSTEMS THIRD FLOOR PLAN
E3.1	ELECTRICAL PANEL SCHEDULE, POWER & SPECIAL SYSTEMS THIRD FLOOR PLAN

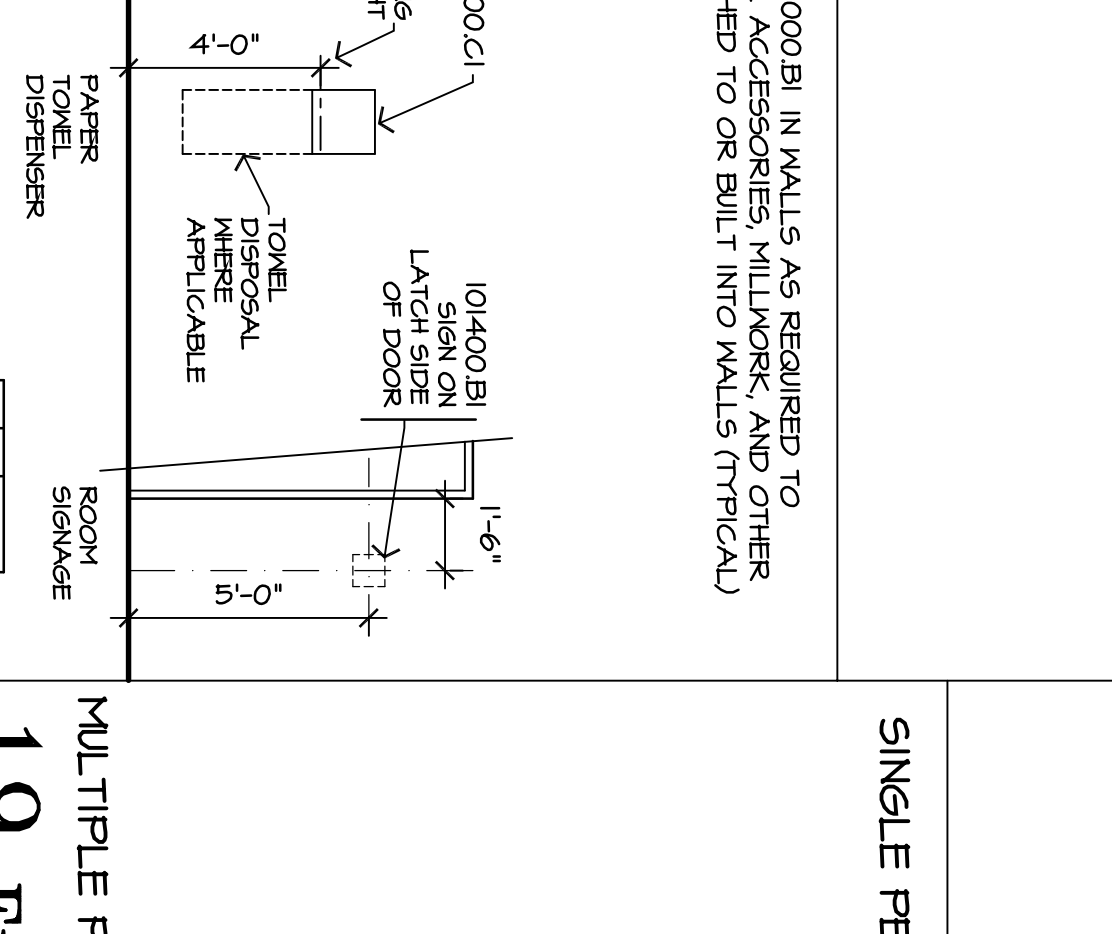
KEY PLAN



## Mounting Height Schedule

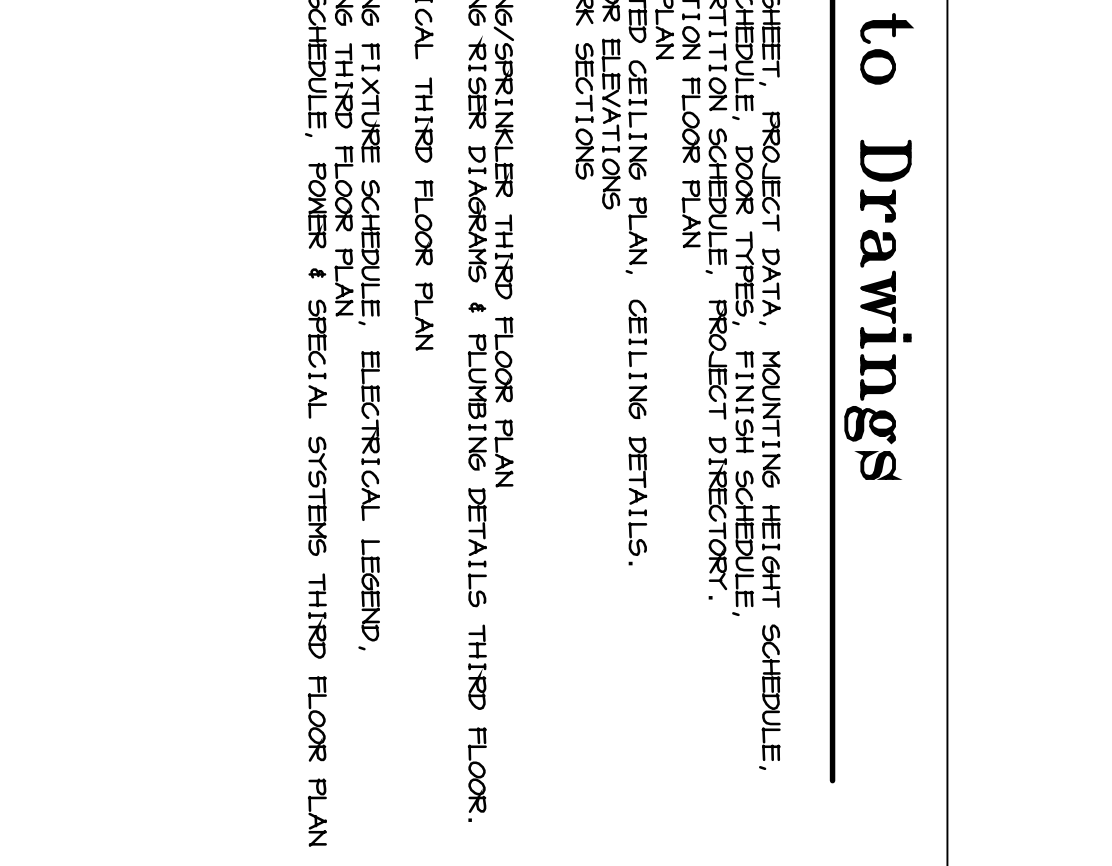
**P1, P1.1**  
3'-5 1/2"  
UNLESS NOTED OTHERWISE, ALL PARTITIONS ARE 1/2" THICK.

**P2, P2.1, P2.2**  
3'-5 1/2"  
SINK & MIRROR OR SINK & MIRROR TO DECK (WHERE INDICATED ON FLOOR PLANS)



## Index to Drawings

NO.	TITLE SHEET, PROJECT DATA, MOUNTING HEIGHT SCHEDULE, DOOR SCHEDULE, DOOR TYPES, FINISH SCHEDULE, PARTITION WORK PLAN, FLOOR PLAN, REFLECTED CEILING PLAN, CEILING DETAILS, MIRROR SECTIONS
P2.1	PLUMBING/SPLINKER THIRD FLOOR PLAN
P2.1	PLUMBING RISER DIAGRAMS / PLUMBING DETAILS THIRD FLOOR.
M2.1	MECHANICAL THIRD FLOOR PLAN
E2.1	ELECTRICAL THIRD FLOOR PLAN
E2.1	ELECTRICAL LEGEND, LIGHTING FIXTURE SCHEDULE, ELECTRICAL PANEL SCHEDULE, POWER & SPECIAL SYSTEMS THIRD FLOOR PLAN
E3.1	ELECTRICAL PANEL SCHEDULE, POWER & SPECIAL SYSTEMS THIRD FLOOR PLAN



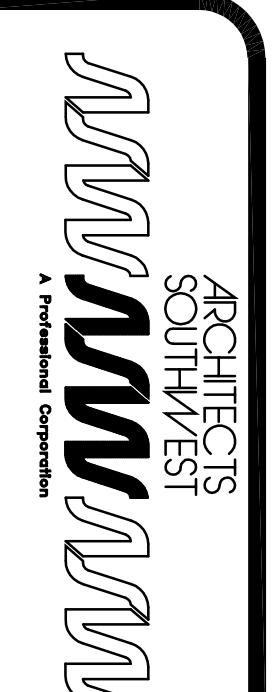
## General Notes

- THIS PROJECT IS A NON-SMOKING PROJECT. SMOKING IS NOT ALLOWED.
- THE CONTRACTOR WILL REMOVE ALL RUBBLE AND DEBRIS FROM THE JOB SITE DAILY AND LEAVE THE BUILDING AND GROUNDS BROOM CLEAN UPON COMPLETION OF THE WORK.

KEY PLAN

# KEYNOTE EXPLANATION

061000 B1	WOOD SHIM OR BLOCKING, SIZE AS REQUIRED, CONTINUOUS WHERE INDICATED.
0718400 C1	EXPANSION JOINT FILLER.
0718400 D1	FIRE RESISTANT JOINT SEALER.
081416 B1	PLASTIC LAMINATE GARD DOOR; SEE OPENING SCHEDULE.
092900 B1	5/8" 60PSM BOARD.
092900 C10	6" BLANKETS SEE SCHEDULE (THREE ARE SOUND ATTENUATION WHEN NEEDED)
092900 C2	CONTINUOUS BEAD OF ACOUSTICAL SEALANT.
092900 C4	3-1/2" METAL STUD FRAMING AT 16" O.C.
092900 F1	20 GAUGE FURRING CHANNELS AT 24" O.C. MAXIMUM.
092900 F8	6" METAL STUD FRAMING AT 16" O.C.
092900 G1	SOUND INSULATION CLIPS AT 24" O.C., MAX. NUMBER AT EACH ROOM (COORDINATE ROOM NUMBER WITH OWNER).
102800 A4	36" 6045 BAR.
102800 A5	42" 6045 BAR.
102800 B2	TOILET PAPER DISPENSER, DOUBLE ROLL, COMBINATION PAPER TOWEL DISPENSER/WASTE RECEPTOR.
102900 C1	102900 D1 SANITARY MARKIN DISPOSAL UNIT.
102900 F1	102900 L2 ROBE HOOK.
102900 H2	102900 H2 UNDER SINK PROTECTIVE PIPE COVER SYSTEM, PLUMBING FIXTURE.
220000 B1	



LABAYETTE, LA  
(837) 287-2211

## Medical Office Suite

Tenant Improvement for Dr. Hertzak, Suite D

1a.

DATE	REVISION	NOTES
09/16/10		

© 2010 - Architects Southwest

ASW PROJECT NO. 10050

SHEET A0.1

OF SHEETS