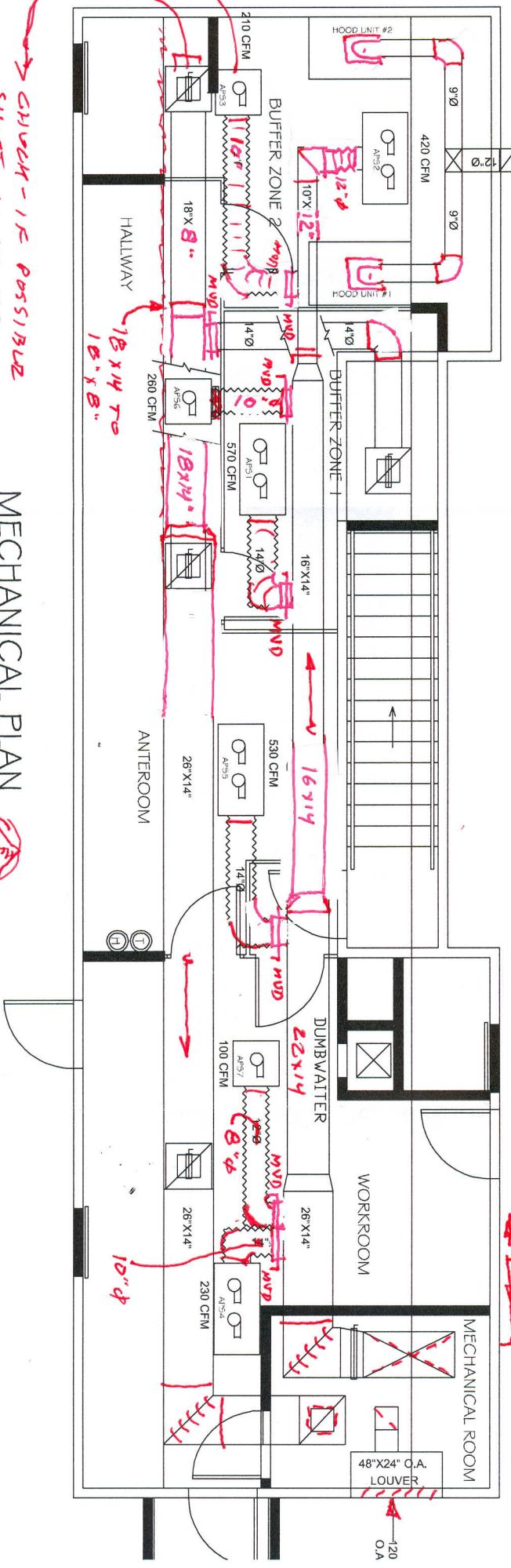


GENERAL NOTES

1. INSTALL EQUIPMENT PER MANUFACTURER'S RECOMMENDATIONS IN COMPLIANCE WITH CURRENT CODES AND REGULATIONS
2. INSULATE DUCTWORK WITH 3" R-12 DUCT WRAP, MINIMUM ~~THICKNESS~~ W/FSH VAPOR BARRIER WITH A MINIMUM R-9 RATING
3. FLEXIBLE DUCT SHALL BE UL RATED
4. FABRICATE DUCTWORK IN ACCORDANCE WITH SHAWA HVAL DUCT CONSTRUCTION STANDARDS FOR A MINIMUM WORKING CLASS OF 2" W.C.
5. BALANCE AIR FLOWS IN ACCORDANCE WITH NECS STANDARDS
6. INSULATE CHW PIPES (SUPPLY & RETURN) WITH 1" THK RIFORMED FIBERGLASS INSULATION, ~~MINIMUM~~ 1/8" ALUMINUM WEATHER SHIELD OUTDOORS
7. FIELD VERIFY ALL DIMENSIONS AND INTERFACES, CONTRACTOR SHALL FIELD ROUTE DUCT/PIPES TO AVOID OBSTRUCTIONS WITHOUT ADDITIONAL COST TO CONTRACTOR



MECHANICAL PLAN

NTS



1/ IS BOB OLY WITH THE CHFS?
 HBS BEEN CHANGING THINGS
 LATELY

FYI - WIRE HANGING THE MECHANICAL ROOM A PLEASUR SO WIREKIT IN THE MESH ROOM WOULD TO BE PLEASED RATED PER NBC

CHUCK - IS POSSIBLE
 SHIFT AWAY FROM
 WALL

1 1/2" CHW
 PIPES TO FREE
 AIR UNIT.

120
 O.A