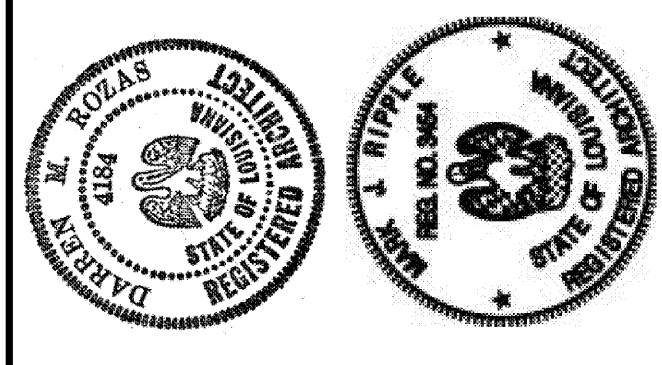
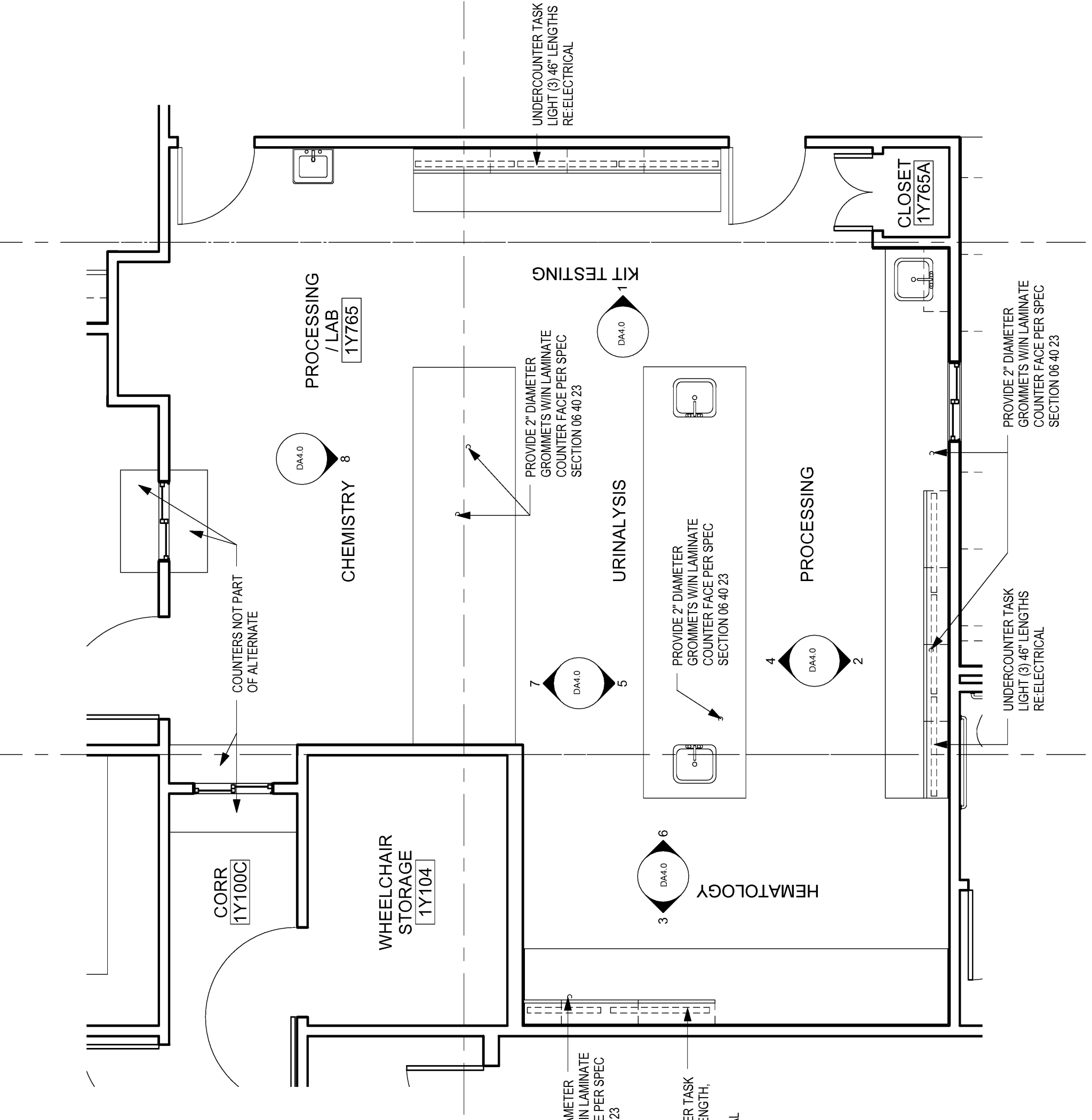


THE ABOVE DRAWINGS AND SPECIFICATIONS ARE THE PROPERTY OF EDR AND RW AND SHALL REMAIN THE PROPERTY OF EDR AND RW. PART THEREOF SHALL BE COPIED, REPRODUCED, OR TRANSMITTED IN ANY FORM OR BY ANY MEANS, ELECTRONIC OR MECHANICAL, INCLUDING PHOTOCOPYING, RECORDING, OR BY ANY INFORMATION STORAGE AND RETRIEVAL SYSTEM, WITHOUT THE WRITTEN CONSENT OF EDR AND RW. THESE DRAWINGS AND SPECIFICATIONS SHALL CONSTITUTE A RESTRICTION ON THE USE OF THESE DRAWINGS AND SPECIFICATIONS. WRITTEN DIMENSIONS ON THESE DRAWINGS SHALL TAKE PRECEDENCE OVER DIMENSIONS SHOWN ON CONTRACTOR'S SHOP DRAWINGS AND CONDITIONS ON THE JOB AND THIS OFFICE MUST BE NOTIFIED OF ANY DISCREPANCIES IN DIMENSIONS AND CONDITIONS SHOWN BY THESE DRAWINGS, SHOP DETAILS AND CONDITIONS ON THE JOB FOR APPROVAL BEFORE PROCEEDING WITH FABRICATION.

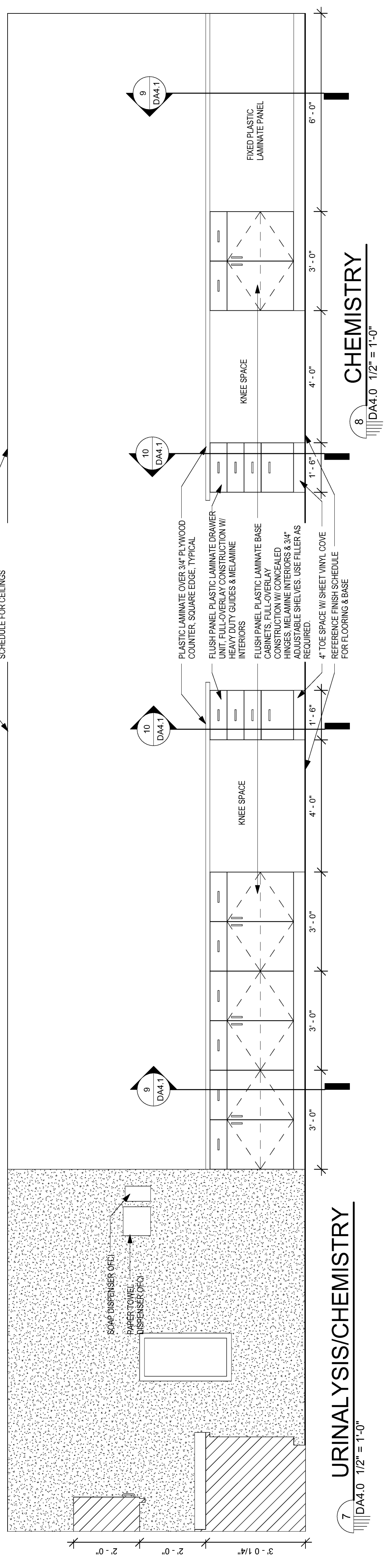
OCHSNER NORTH CAMPUS - INTERNAL MEDICINE RELOCATION
 OCHSNER MEDICAL CENTER
 1401 Jefferson Highway
 Jefferson, LA 70121
 Copyright © 2010
 ESKREW, DUMÉZIL, RIPPLE & ROZAS+WARD, Joint Venture
 Date: 16 DECEMBER 2010
 V.E. 16 MAY 2010



DEDUCT ALT #4 - LABORATORY MILLWORK
 EDR No. 09023
 RWA No. 09024
 drawn: GUY
 checked: HANKS
 approved: HANKS
 sheet:



DEDUCT ALTERNATE NOT ACCEPTED. G.C. TO PROVIDE MILLWORK AS SHOWN



DEDUCT ALTERNATE GENERAL NOTES

- DEDUCT ALTERNATE TO BE PRICED FOR COMPARISON WITH OWNER PROVIDED PRICING FOR SYSTEMS FURNITURE.
- REFER TO SPEC SECTION 01 23 00 FOR FURTHER DESCRIPTIONS OF ADD AND DEDUCT ALTERNATES.