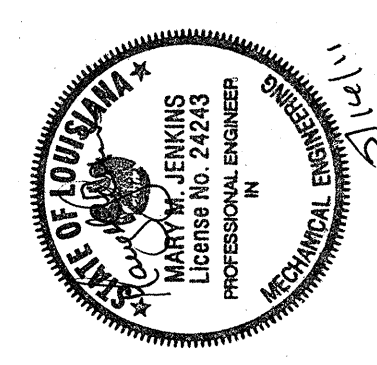
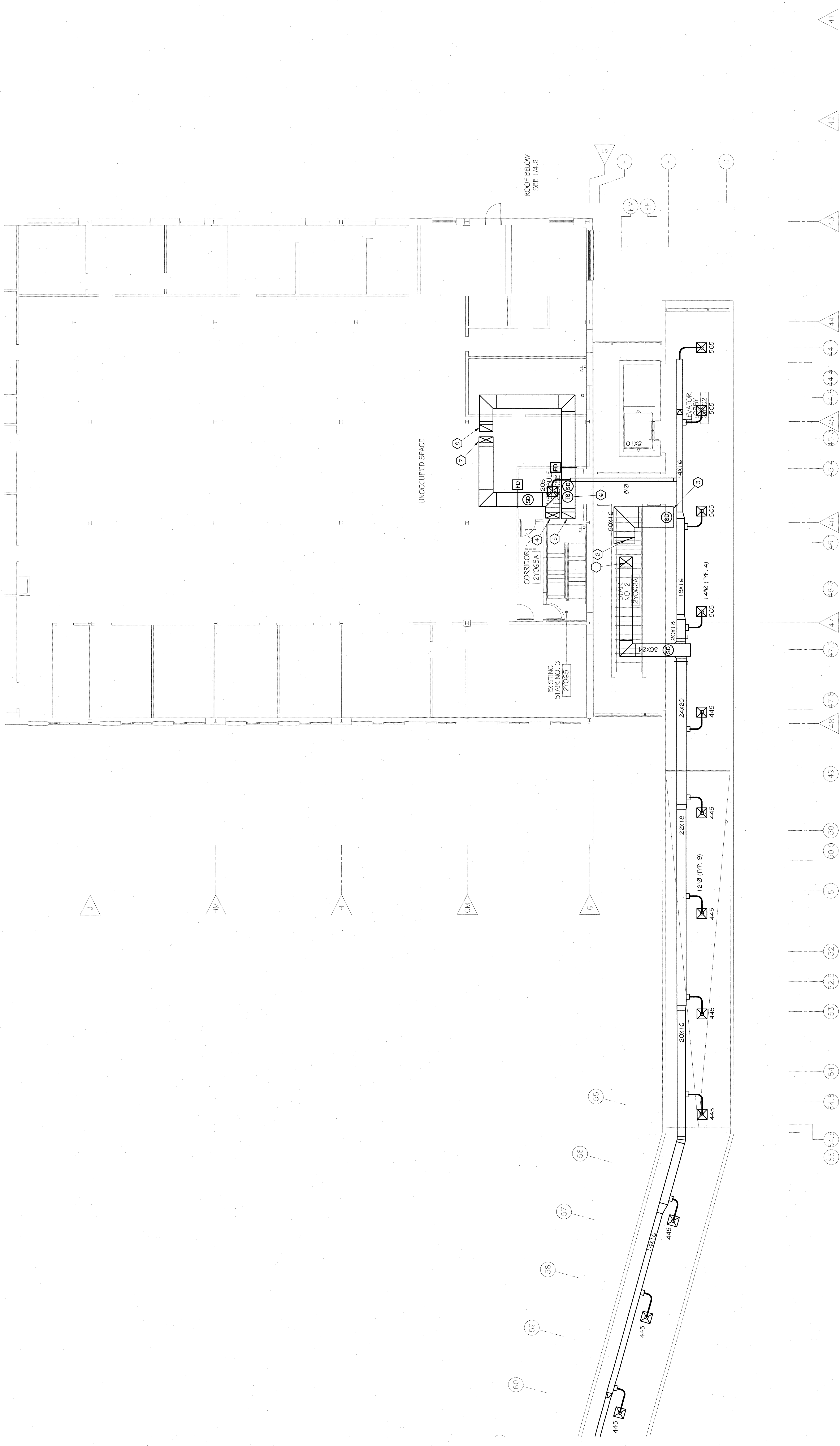


THE ABOVE DRAWINGS AND SPECIFICATIONS AND ALL GENERAL NOTES ARE THE PROPERTY OF THE ARCHITECT AND NO PART SHALL BE REPRODUCED OR TRANSMITTED IN ANY FORM OR BY ANY MEANS, ELECTRONIC OR MECHANICAL, INCLUDING PHOTOCOPYING, RECORDING, OR BY ANY INFORMATION STORAGE AND RETRIEVAL SYSTEM, WITHOUT THE WRITTEN CONSENT OF THE ARCHITECT. THESE DRAWINGS OR SPECIFICATIONS SHALL CONSTITUTE CONTRACT. ANY CHANGES OR MODIFICATIONS TO THESE DRAWINGS OR SPECIFICATIONS SHALL BE MADE BY THE ARCHITECT AND SHALL BE INDICATED BY A REVISION. THE CONTRACTOR SHALL VERIFY AND BE RESPONSIBLE FOR ALL DIMENSIONS AND CONDITIONS OF THE WORK. ANY VARIATIONS FROM THE DIMENSIONS AND CONDITIONS SHOWN ON THESE DRAWINGS MUST BE SUBMITTED TO THE ARCHITECT FOR APPROVAL BEFORE PROCEEDING WITH FABRICATION.

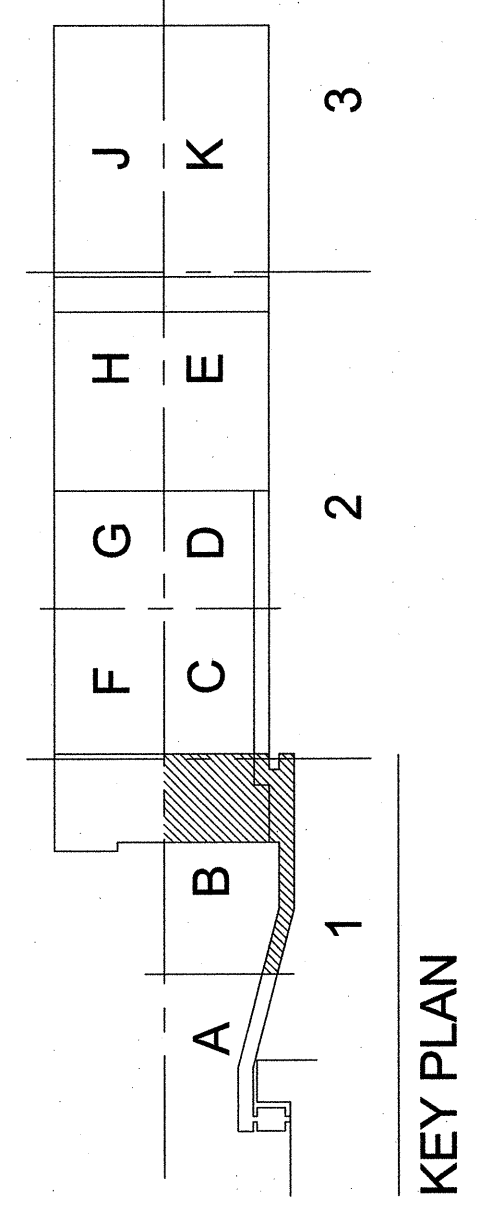
**OCHSNER NORTH CAMPUS INTERNAL MEDICINE RELOCATION**  
 OCHSNER MEDICAL CENTER  
 1401 Jefferson Highway  
 Jefferson, LA 70121  
 Copyright © 2010  
 Eskew+Dumez+Ripple / Rozas-Ward, Joint Venture  
 Date: 15 MAY 2011



HVAC SECOND FLOOR PLAN SECTION 1 - AREA B	
EDR No. 09023	
drawn: MRV	RWA No. 09024
checked: MMJ	
approved: MMJ	
sheet:	



**1 SECOND FLOOR HVAC PLAN**  
 4.2 SECTION 1 - AREA B  
 1/8" = 1'-0"



GENERAL CONTRACTOR TO COORDINATE W/ROOF TRUSSES FOR SCOPE OF WORK ABOVE CEILING LEVELS. PROVIDE ABOVE CEILING COORDINATION DRAWING FOR ARCHITECT REVIEW PRIOR TO START OF CEILING, MECHANICAL, ELECTRICAL, AND PLUMBING WORK.

- SPECIFIC NOTES (THIS SHEET ONLY):**
- 1 30x24 SUPPLY AIR DUCT FROM UNIT AC-N2 ON ROOF.
  - 2 50x16 RETURN AIR DUCT UP TO UNIT AC-N2 ON ROOF.
  - 3 PROVIDE HARDWARE CLOTH COVER OPEN END OF DUCTWORK.
  - 4 34x14 SUPPLY AIR DUCT DOWN TO FIRST FLOOR.
  - 5 32x16 RETURN AIR DUCT UP FROM FIRST FLOOR.
  - 6 RETURN AIR DUCT MOUNTED TEMPERATURE SENSOR.
  - 7 34x14 SUPPLY AIR DUCT DOWN FROM UNIT AC-N1 ON ROOF.
  - 8 32x16 RETURN AIR DUCT UP TO UNIT AC-N1 ON ROOF.