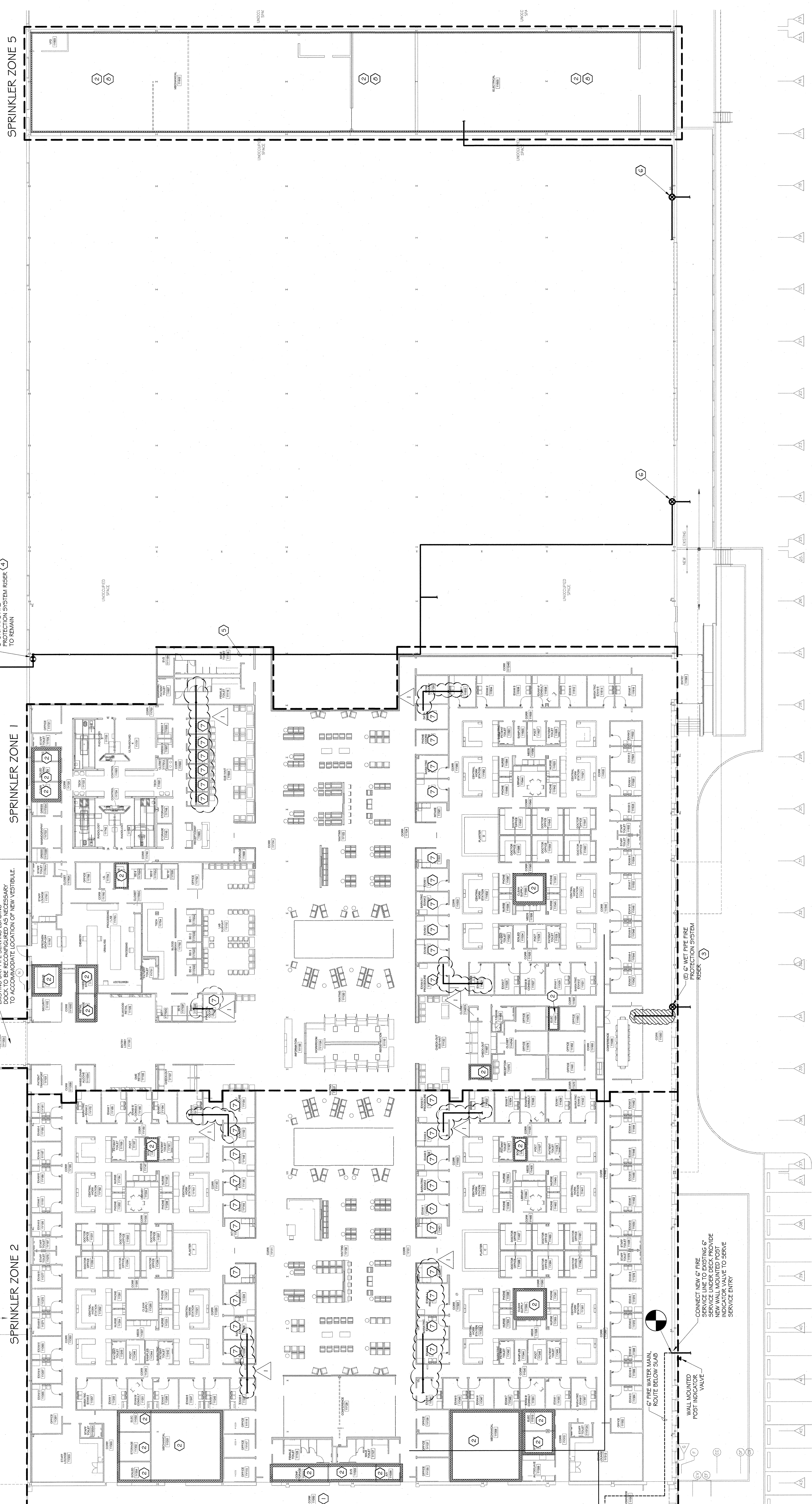


THE ABOVE DRAWINGS AND SPECIFICATIONS AND NEAR DESIGNATIONS ARE THE PROPERTY OF THE ARCHITECT, AND NO PART SHALL BE REPRODUCED OR TRANSMITTED IN ANY FORM OR BY ANY MEANS, ELECTRONIC OR MECHANICAL, INCLUDING PHOTOCOPYING, RECORDING, OR BY ANY INFORMATION STORAGE AND RETRIEVAL SYSTEM, WITHOUT THE WRITTEN CONSENT OF THE ARCHITECT. THESE DRAWINGS OR SPECIFICATIONS SHALL CONSTITUTE CONCLUSIVE EVIDENCE OF ACCEPTANCE OF THESE DRAWINGS AND SPECIFICATIONS BY THE CONTRACTOR. CONTRACTORS SHALL VERIFY, AND BE RESPONSIBLE FOR, ALL DIMENSIONS AND CONDITIONS OF THE WORK. ANY VARIATIONS FROM THE DIMENSIONS AND CONDITIONS SHOWN ON THESE DRAWINGS SHALL BE SUBMITTED TO THIS OFFICE FOR APPROVAL BEFORE PROCEEDING WITH THE WORK.

OCHSNER NORTH CAMPUS INTERNAL MEDICINE RELOCATION
 OCHSNER MEDICAL CENTER
 1401 Jefferson Highway
 Jefferson, LA 70121
 Copyright © 2010
 Eskew-Dumez-Ripple / Rozas-Ward, Joint Venture
 Date: 18 MAY 2011
 ADD #3 13 JANUARY 2010

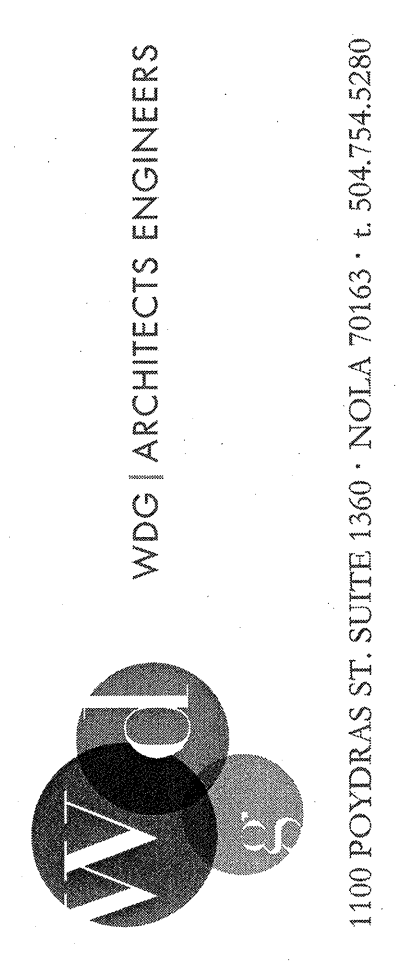


FIRE PROTECTION FIRST FLOOR PLAN SECTION 2
 EDR No. 09023
 RWA No. 09024
 drawn: SMS
 checked: MMJ
 approved: MMJ
 sheet:



1 FIRST FLOOR - FIRE PROTECTION PARTIAL PLAN
 1/16" = 1'-0"
 FP.2.2 SECTION 2

NOTE:
 UNLESS OTHERWISE NOTED, ALL AREAS SHALL BE PROVIDED WITH COVERAGE FOR LIGHT HAZARD OCCUPANCY.



- SPECIFIC NOTES (THIS SHEET ONLY):**
- 1 PROVIDE LIGHT HAZARD, SPRINKLER PROTECTION.
 - 2 PROVIDE ORDINARY HAZARD, GROUP 1, SPRINKLER PROTECTION.
 - 3 REMOVE EXISTING SPRINKLER RISER AND ASSOCIATED FITTING. CAP RISER FLUSH WITH SLAB.
 - 4 EXISTING DRY PIPE SYSTEM RISER AND ASSOCIATED FITTING SERVING LOADING DOCK TO REMAIN.
 - 5 RELOCATE MAIN AS REQUIRED TO COORDINATE WITH WORK OF OTHER DISCIPLINES.
 - 6 EXISTING WET PIPE RISER TO REMAIN. MAINTAIN SPRINKLER HEADS AND DISTRIBUTION PIPING SERVING PORTION OF BUILDING TO REMAIN AS IS.
 - 7 REMOVE SPRINKLER HEADS AND BRANCHED PIPING SERVING AREAS TO BE SEQUOATED.
 - 8 AUTOMATIC SPRINKLER DISTRIBUTION PIPING SERVING ROOM SHALL BE MAINTAINED BELOW AS CLOSE TO THE TOP OF THE ROOF IN AREAS INDICATED AS REQUIRED TO AVOID VISIBILITY.
 - 9 RECONFIGURE EXISTING SPRINKLER SYSTEM SERVING SPRINKLER ZONE #5 AS REQUIRED TO PROVIDE ORDINARY HAZARD, GROUP 1, COVERAGE AS REQUIRED BY 2010 NFPA 13.