

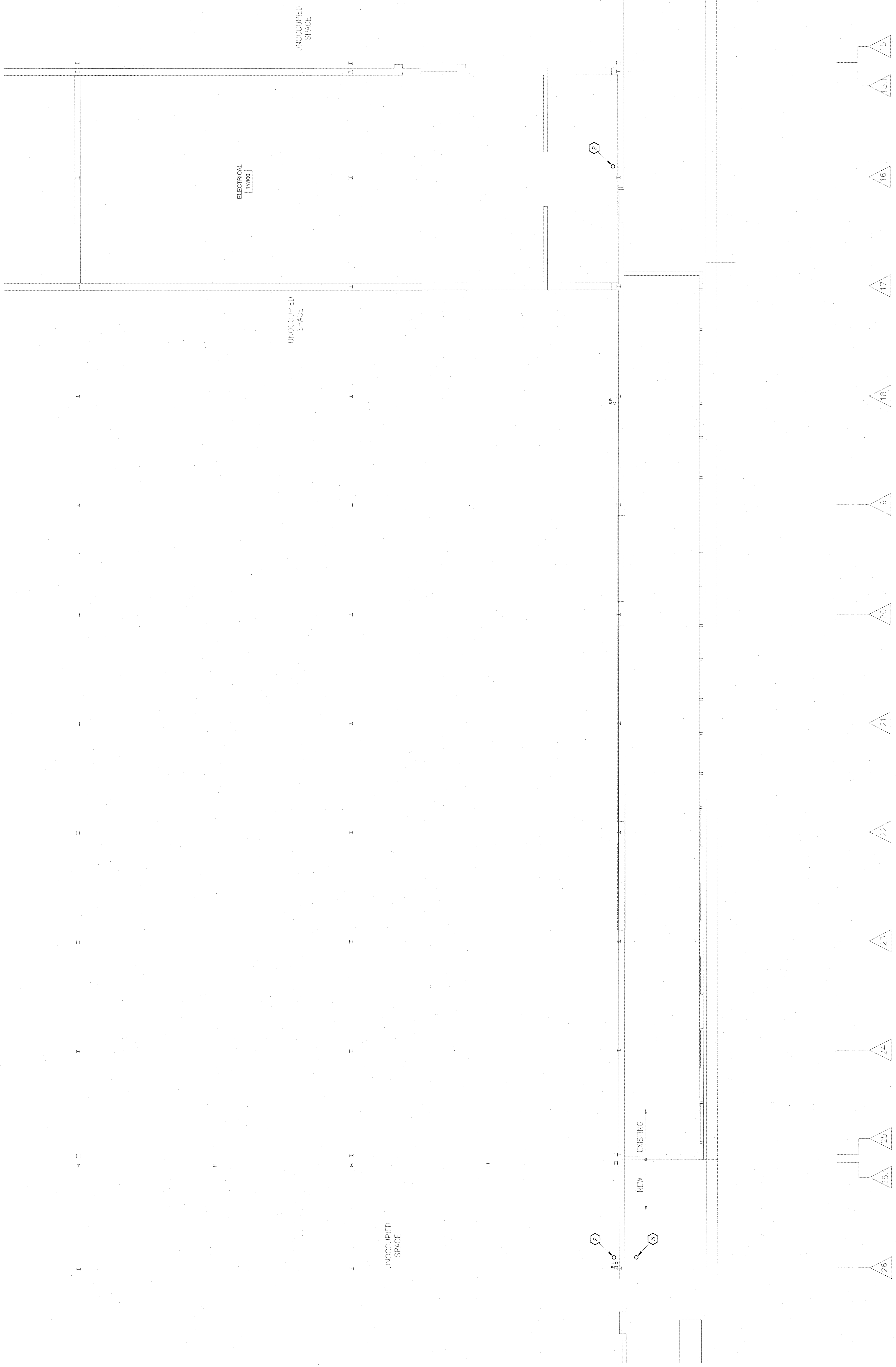
THE ABOVE DRAWINGS AND SPECIFICATIONS AND ALL GENERAL NOTES ARE THE PROPERTY OF THE ARCHITECT, AND NO PART OF THEM SHALL BE REPRODUCED, COPIED, OR TRANSMITTED IN ANY FORM OR BY ANY MEANS, ELECTRONIC OR MECHANICAL, INCLUDING PHOTOCOPYING, RECORDING, OR BY ANY INFORMATION STORAGE AND RETRIEVAL SYSTEM, WITHOUT THE WRITTEN CONSENT OF THE ARCHITECT. THESE DRAWINGS OR SPECIFICATIONS SHALL CONSTITUTE CONTRACT ONLY IN THE EVENT OF A DISPUTE. CONTRACTORS SHALL VERIFY ALL DIMENSIONS AND CONDITIONS OF EXISTING CONDITIONS PRIOR TO CONSTRUCTION. CONTRACTORS SHALL VERIFY AND BE RESPONSIBLE FOR ALL DIMENSIONS AND CONDITIONS OF EXISTING CONDITIONS PRIOR TO CONSTRUCTION. ANY VARIATIONS FROM THE DIMENSIONS AND CONDITIONS OF EXISTING CONDITIONS MUST BE SUBMITTED TO THE ARCHITECT FOR APPROVAL PRIOR TO PROCEEDING WITH FABRICATION.

OCHSNER
 NORTH CAMPUS
 INTERNAL
 MEDICINE
 RELOCATION
 OCHSNER MEDICAL CENTER
 1401 Jefferson Highway
 Jefferson, LA 70121

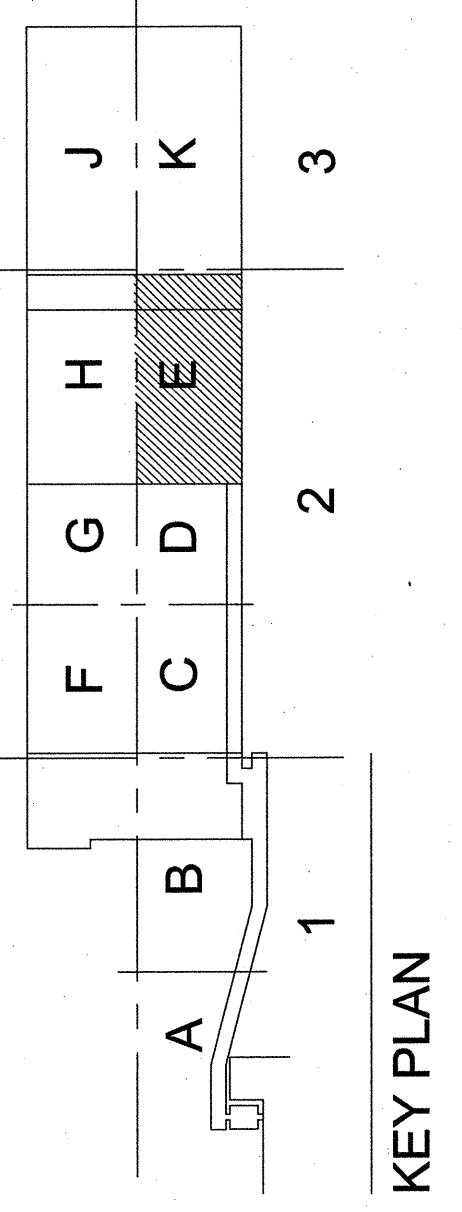
Copyright © 2010
 Eskew+DummeZ+Ripple /
 Rozas+Ward, Joint Venture
 Date: 16 MAY 2011



WASTE AND VENT
 FIRST FLOOR PLAN
 SECTION 2 - AREA E
 EDR No. 09023
 RWA No. 09024
 drawn: SMS
 checked: MMJ
 approved: MMJ
 sheet:



1 WASTE AND VENT FIRST FLOOR PLAN
 1/8" = 1'-0"



SHEET NOTES:

- ① COORDINATE PLANTER MATERIAL TO ASSURE COMPATIBILITY WITH NEW PLANTER DRAIN. CONTRACTOR TO FIELD VERIFY EXACT LOCATION OF NEAREST STORM DRAIN LINE AND CONNECT NEW 3" PLANTER DRAIN TO STORM DRAINAGE SYSTEM.
- ② CONNECT NEW ROOF DRAIN TO EXISTING STORM DRAIN RISER.
- ③ EXTEND AND CONNECT NEW 3" SD INTO BUILDING AND CONNECT TO EXISTING SD RISER.