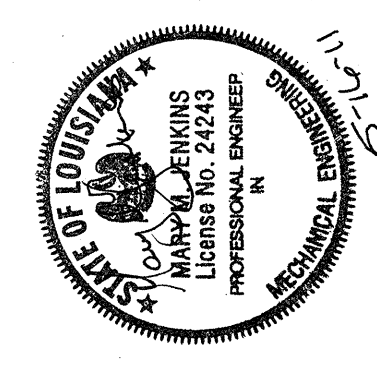


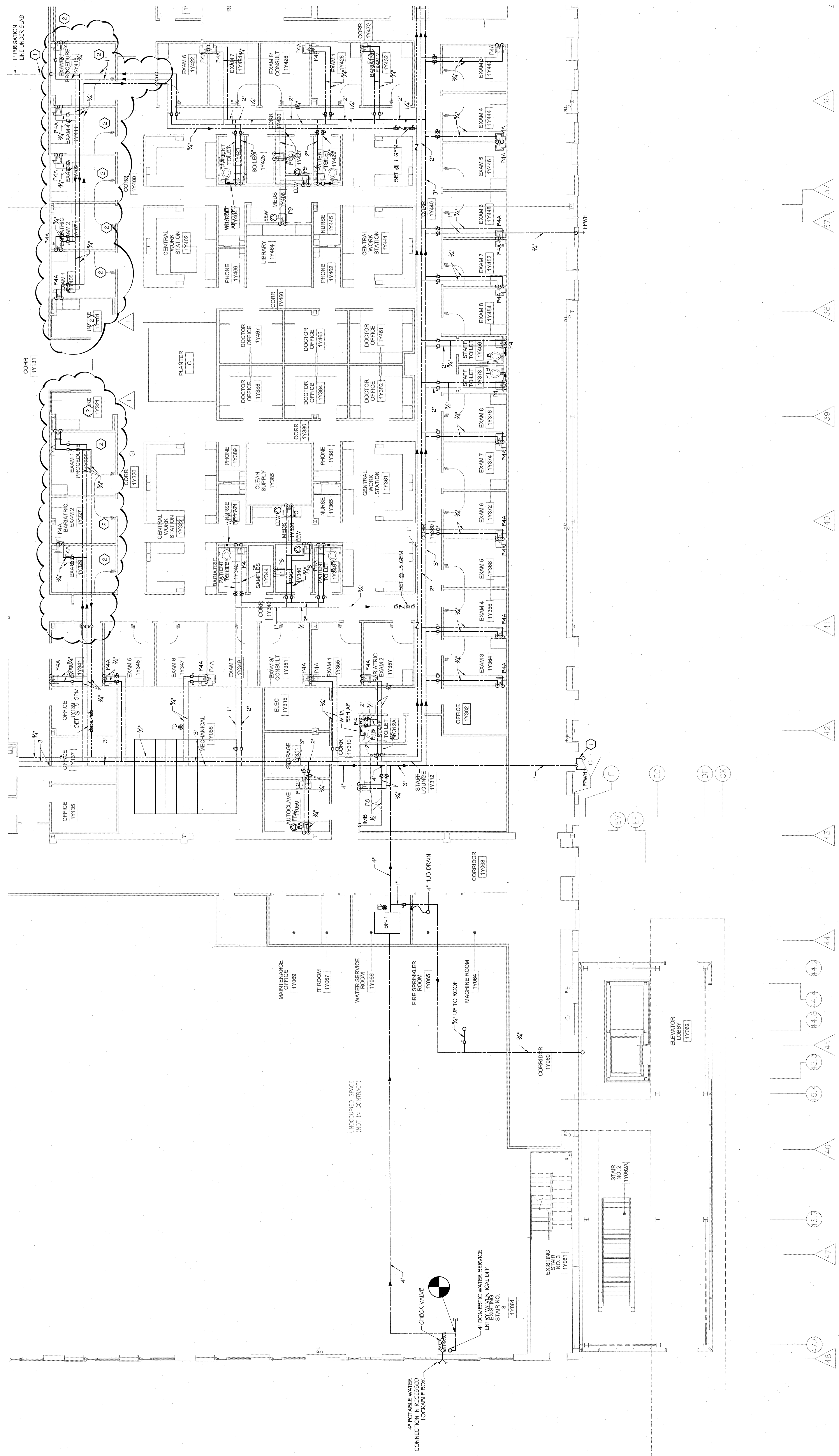
THE ABOVE DRAWINGS AND SPECIFICATIONS SHALL BE THE PROPERTY OF THE ARCHITECT, AND NO PART THEREOF SHALL BE REPRODUCED OR TRANSMITTED IN ANY FORM OR BY ANY MEANS, ELECTRONIC OR MECHANICAL, INCLUDING PHOTOCOPYING, RECORDING, OR BY ANY INFORMATION STORAGE AND RETRIEVAL SYSTEM, WITHOUT THE WRITTEN PERMISSION OF THE ARCHITECT. THE ARCHITECT'S LIABILITY IS LIMITED TO THE PROFESSIONAL SERVICES PROVIDED AND DOES NOT INCLUDE THE DESIGN OF STRUCTURAL OR MECHANICAL SYSTEMS. THE ARCHITECT SHALL NOT BE RESPONSIBLE FOR THE DESIGN OF SUCH SYSTEMS. THE ARCHITECT SHALL NOT BE RESPONSIBLE FOR THE DESIGN OF SUCH SYSTEMS. THE ARCHITECT SHALL NOT BE RESPONSIBLE FOR THE DESIGN OF SUCH SYSTEMS.

OCHSNER NORTH CAMPUS INTERNAL MEDICINE RELOCATION
 OCHSNER MEDICAL CENTER
 1401 Jefferson Highway
 Jefferson, LA 70121

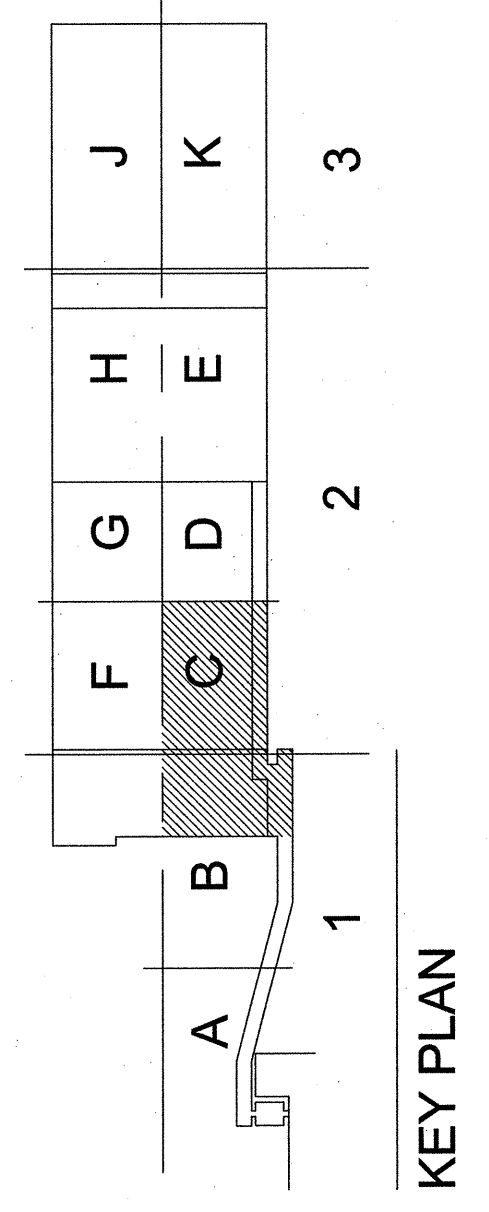
Copyright © 2010
 Eskew+Dumez-Ripple /
 Rozas+Ward, Joint Venture
 Date: 16 MAY 2011
 ADD #3 13 JANUARY 2010



PLUMBING
 FIRST FLOOR PLAN
 SECTION 1 & 2 - AREA B & C
 EDR No. 09023
 RWA No. 09024
 drawt: SMS
 checked: MMJ
 approved: MMJ
 sheet:



1 FIRST FLOOR PLUMBING PLAN
 3.1.3 SECTION 1 & 2 - AREA B & C
 1/8" = 1'-0"



WDI
 WDG ARCHITECTS ENGINEERS
 1100 POYDRAS ST. SUITE 1360 - NOLA 70103 - t. 504.754.5280

SPECIFIC NOTES (THIS SHEET ONLY):

- EXTEND 1" CW FOR NEW IRRIGATION LINE, PROVIDE SHUT OFF VALVE AND BACKFLOW PREVENTER AS REQUIRED.
- DOMESTIC WATER PIPING SERVING ROOM SHALL BE MAINTAINED BELOW AS CLOSE TO THE TOP OF THE FLOOR IN AREAS INDICATED AS REQUIRED TO AVOID VISIBILITY.