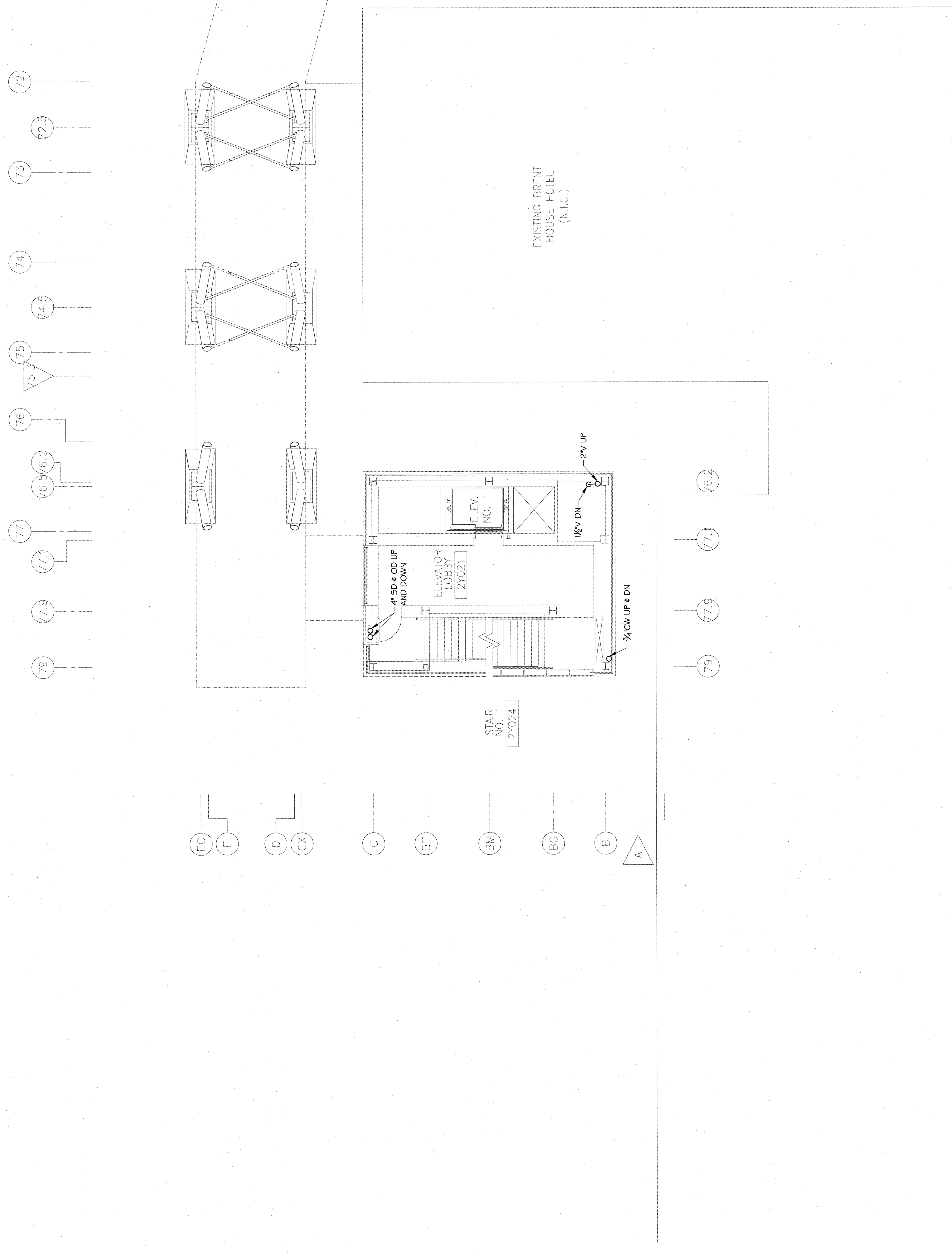


THE ABOVE DRAWINGS AND SPECIFICATIONS AND ALL ELEMENTS THEREIN ARE THE PROPERTY OF ESKEW+DUMEZ+RIPPLE AND SHALL REMAIN THE PROPERTY OF THE ARCHITECT AND NO PART OF THESE DRAWINGS OR SPECIFICATIONS SHALL BE REPRODUCED, COPIED, DISCLOSED TO OTHERS OR USED IN CONNECTION WITH ANY WORK OR PROJECT FOR WHICH THEY HAVE BEEN PREPARED AND DEVELOPED WITHOUT THE WRITTEN CONSENT OF ESKEW+DUMEZ+RIPPLE. THESE CHANGES OR SPECIFICATIONS SHALL CONSTITUTE A MODIFICATION TO THE ORIGINAL CONTRACT AND SHALL BE SUBJECT TO THE WRITTEN APPROVAL OF THESE ARCHITECTS. ANY CHANGES TO THESE WRITTEN DIMENSIONS OR THESE SPECIFICATIONS SHALL BE SUBJECT TO THE WRITTEN APPROVAL OF THESE ARCHITECTS. CONTRACTORS SHALL VERIFY, AND BE RESPONSIBLE FOR, THE ACCURACY OF ALL DIMENSIONS AND CONDITIONS ON THE DRAWINGS AND THIS OFFICE MUST BE NOTIFIED OF ANY VARIATIONS FROM THE DIMENSIONS AND CONDITIONS SHOWN ON THESE DRAWINGS. SHOP DETAILS MUST BE SUBMITTED TO THIS OFFICE FOR REVIEW AND APPROVAL PRIOR TO PROCEEDING WITH FABRICATION.

OCHSNER NORTH CAMPUS INTERNAL MEDICINE RELOCATION
 OCHSNER MEDICAL CENTER
 1401 Jefferson Highway
 Jefferson, LA 70121
 Copyright © 2010
 Eskew+Dumez+Ripple /
 Rozas+Ward, Joint Venture
 Date: 18 MAY 2011



PLUMBING
 SECOND FLOOR PLAN
 SECTION 1 - AREA A
 EDR No. 09023
 RWA No. 09024
 drawn: SMS
 checked: MMJ
 approved: MMJ
 sheet:



1 SECOND FLOOR PLUMBING PLAN
 P4.1 SECTION 1 - AREA A
 1/8" = 1'-0"

